

2021 Combined Sewer Overflow Annual Snapshot

King County's sewer system protects people and the environment by transporting and treating stormwater and sewage. When heavy rains fill the pipes, combined sewer overflows (CSOs) release sewage and stormwater into rivers, lakes, or Puget Sound. We are committed to controlling CSOs in accordance with state and federal law. We accomplish this by building infrastructure to manage wastewater, by using green stormwater infrastructure (GSI) to keep excess water out of the system, and by coordinating with Seattle Public Utilities to best utilize the sewer system.

CSO Outfalls

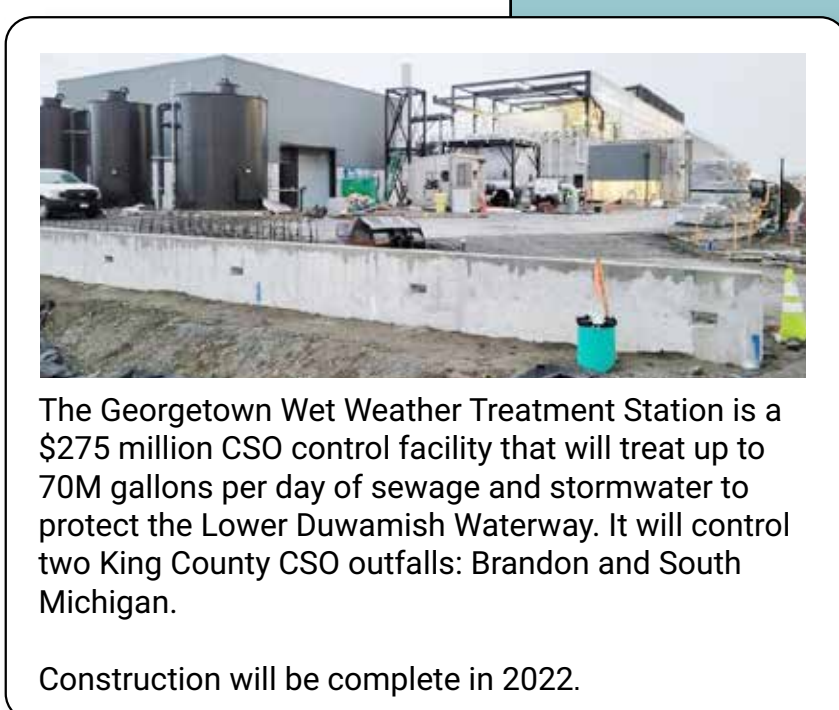
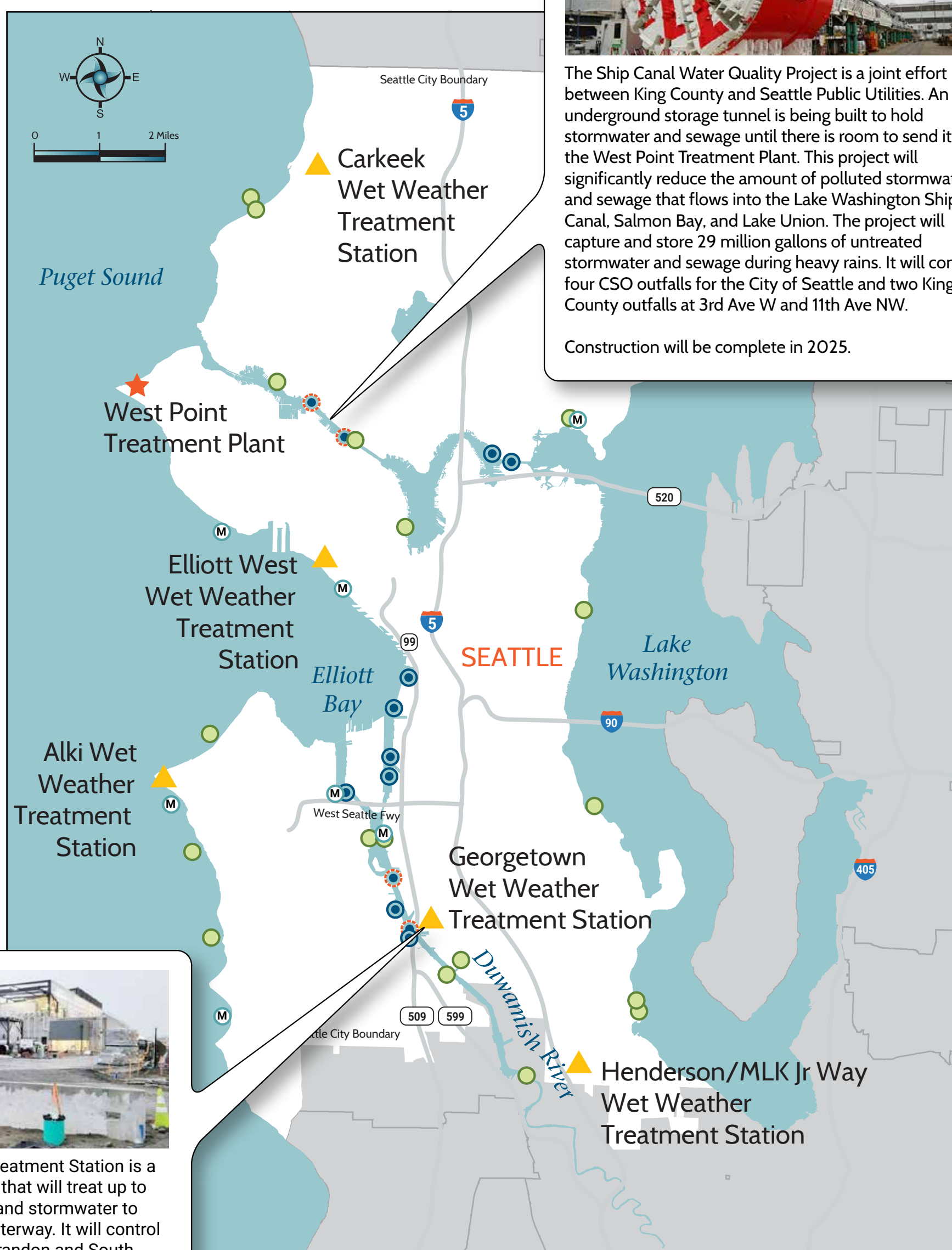
CSO outfalls are relief points in sewer systems that carry sewage and stormwater in the same pipe. When heavy rains fill the pipes, CSOs release sewage and stormwater into local water bodies to prevent sewage backups into homes and businesses. King County is committed to controlling our outfalls by reducing the frequency of overflows at each of our CSOs to no more than one per year over a long-term average.

CSO OUTFALLS

- Controlled
- Ⓜ Monitoring or Additional Measures Underway to Ensure Compliance
- ⚙ Uncontrolled - Project Under Construction
- Ⓜ Uncontrolled - Project Planned
- ★ Wastewater Treatment Plant
- ▲ Wet Weather Treatment Station

Monitoring and Supplemental Compliance Plans

King County monitors controlled CSOs to make sure they are performing as they should. If we find a problem, we outline the additional steps we will take in a Supplemental Compliance Plan. We keep monitoring as we make changes.

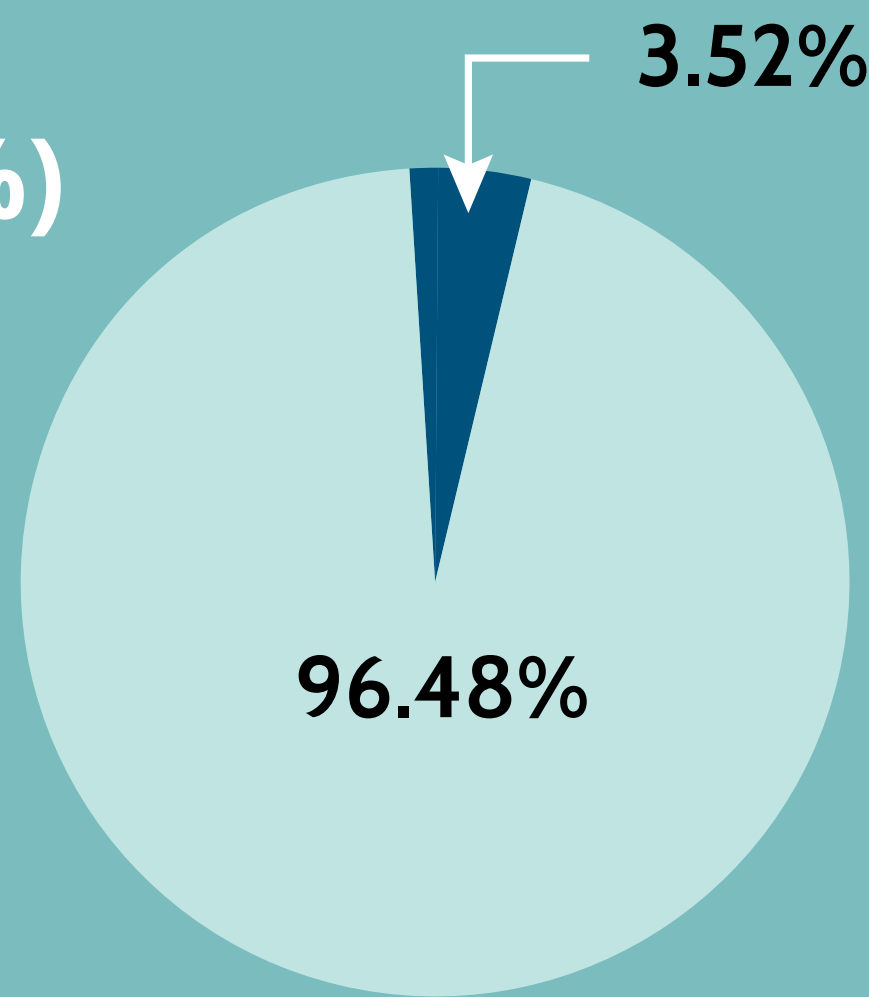


2021 CSO Outfall Statistics

- **19** CONTROLLED OUTFALLS
- Ⓜ **13** UNCONTROLLED OUTFALLS
- Ⓜ **7** OUTFALLS BEING MONITORED OR ADDITIONAL MEASURES UNDERWAY
- Ⓜ **39** KING COUNTY CSO OUTFALLS

WE TREATED
34.55 billion gallons (96.48%)
of flow in the combined system in 2021. We estimate that 6.91 billion gallons is stormwater that would otherwise be untreated.

WE DISCHARGED
1.26 billion gallons (3.52%)
of untreated flow from the combined system in 2021. We estimate that 90% of this is stormwater that fills the system on rainy days.



2021 RainWise Program Accomplishments

The RainWise program provides rebates to homeowners living in specific combined sewer areas for installing rain gardens and cisterns on their property. King County has administered this program in partnership with SPU since 2010. We continued to make progress in 2021 working with property owners to capture stormwater before it enters the combined system.

