

# INFILTRATION AND INFLOW REDUCTION PROJECT



## What is Infiltration and Inflow and Why is it a Problem?

Excess water that flows into sewer pipes from groundwater and stormwater is called infiltration and inflow, or I/I. Most I/I is caused by aging infrastructure on public or private property that needs maintenance or replacement, and improper storm drain connections to the sewer.

**Groundwater (infiltration)** seeps into sewer pipes through holes, cracks, joint failures, and faulty connections. **Stormwater (inflow)** flows into sewers via improperly connected roof drain downspouts, foundation drains, storm drain cross-connections, and through holes in manhole covers.

The King County Wastewater Treatment Division estimates that I/I makes up 75 percent of peak flows in the sewer system during winter storms – and that much of this I/I originates on private property.

Extra water in the sewer system is a problem because:

- It takes up capacity in the sewer pipes and ends up at the regional wastewater treatment plants where it must be treated like sewage, resulting in higher treatment costs.
- New and larger conveyance facilities are needed to transport larger volumes of flow, resulting in expensive capital projects.
- I/I flows contribute to sewer system overflows into local homes and the region's waterways, negatively impacting public health and the environment.

## Initial I/I Reduction Projects

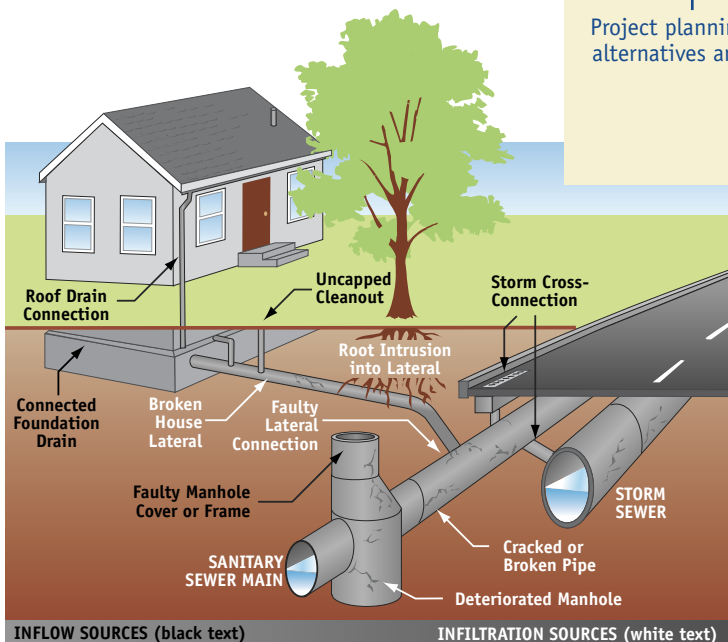
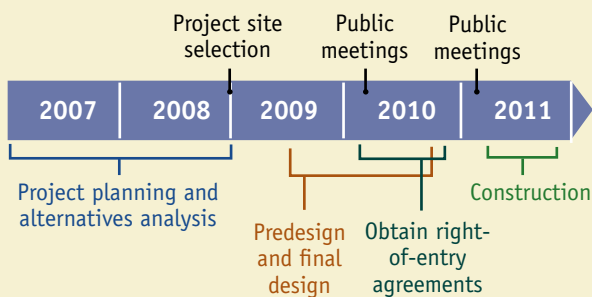
During 2011-12 King County will construct I/I reduction projects in the Skyway Water and Sewer District service area (unincorporated King County) and in the cities of Bellevue and Issaquah. Much of this work will focus on repairing private side sewers with the permission and cooperation of private property owners.

These projects will test the cost-effectiveness of I/I reduction on a scale large enough to potentially offset the need for larger conveyance or storage facilities. Reducing the flow of groundwater and stormwater into the sewer system should save public funds by reducing treatment costs and delaying or eliminating the need for expensive capacity expansion projects.

This project will be managed and funded by King County in partnership with the Skyway Water and Sewer District. **There is no cost to you as a property owner and participation is voluntary.**

Not all properties in the project area will be included in side sewer rehabilitation work. Only properties where rehabilitation is technically feasible and cost-effective will be included.

### SKYWAY I/I PROJECT TIMELINE



## For More Information

- Visit the King County website at [www.kingcounty.gov/environment/wastewater/II/InitialProjects/Skyway.aspx](http://www.kingcounty.gov/environment/wastewater/II/InitialProjects/Skyway.aspx)
- Contact Maryann Petrocelli, King County Community Relations, 206-263-7321 or [maryann.petrocelli@kingcounty.gov](mailto:maryann.petrocelli@kingcounty.gov)
- Contact Cheryl Scheuerman, Skyway Water and Sewer District General Manager, 206-772-7343 or [Cheryl@skywayws.org](mailto:Cheryl@skywayws.org)



**Regional I/I Control Program**  
**Wastewater Treatment Division**  
 Department of Natural Resources and Parks  
 King Street Center, Suite 505  
 201 South Jackson Street  
 Seattle, WA 98104-3855

PRESORTED  
 FIRST-CLASS MAIL  
 U.S. POSTAGE  
**PAID**  
 SEATTLE, WA  
 PERMIT NO. 836

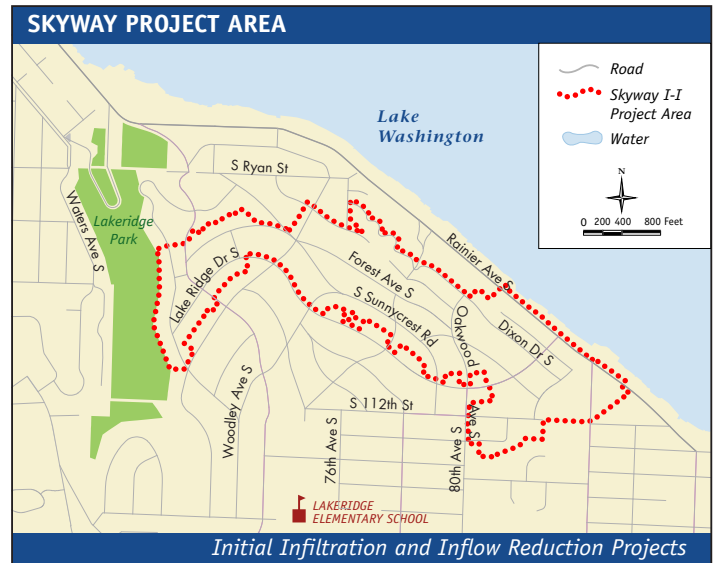
Alternate formats available  
 206-263-7321 or 771 TTY Relay

*Upcoming public meetings about the side sewer repair project in your neighborhood:*

- Saturday, March 13th
- Tuesday, March 16th

## Skyway Infiltration/Inflow (I/I) Reduction Project

King County Wastewater Treatment Division, in coordination with the Skyway Water and Sewer District, **is planning a side sewer repair project in your neighborhood for 2011.** The I/I reduction project in your neighborhood will replace side sewers serving roughly 340 residential properties; repair or replace public sewer mains and manholes; and disconnect improper storm drainage connections to the sanitary sewer. The project is anticipated to remove enough excess flows from the local sewer system to eliminate the need to build a large regional wastewater storage facility in the area. King County and the Skyway Water and Sewer District will provide detailed information before construction begins, and will work closely with property owners and residents of the project area of minimize the impacts of construction.



**Come to a public meeting to learn more**

King County Wastewater Treatment Division, in coordination with the Skyway Water and Sewer District, is planning a side sewer repair project in your neighborhood for 2011.

**Dates:** Saturday, March 13, 10:00-11:30 a.m.  
 Tuesday, March 16, 7:00-8:30 p.m.

**Location:** Skyway Water and Sewer District  
 6723 South 124th St, Seattle, 98178