

Scope of Work for Evaluation of Inflow and Infiltration Concepts



MWPAAC
May 25, 2016



King County

Department of Natural Resources and Parks
Wastewater Treatment Division

Today's Presentation

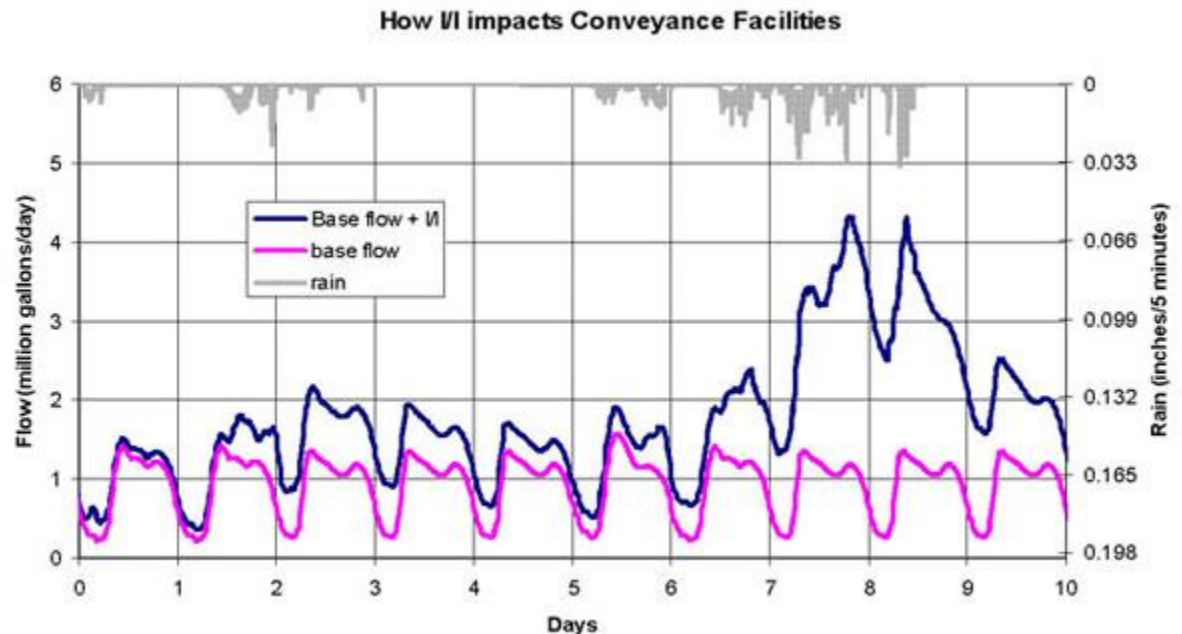
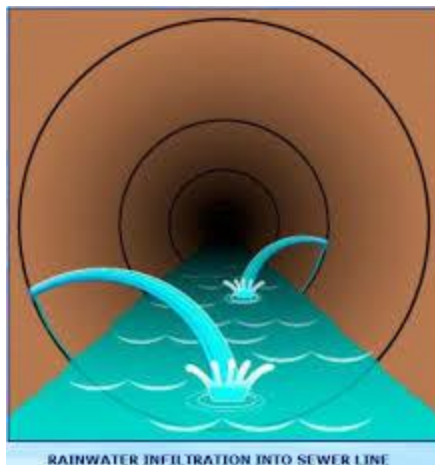
- Background
- Overview of Scope of Work
- Opportunities for Input on the Scope of Work

Regional I/I Program History

- 1999: Program created as part of RSWP.
- 2001-2002: Current levels of I/I defined for each local agency.
- 2003-2004: 10 pilot projects in 12 local agency jurisdictions.
- 2004: Developed final draft standards, procedures, policies, and guidelines for long-term I/I control
- 2005 – 2006: Executive's Recommended I/I control program developed and approved by Council
- 2011 – 2013: Initial I/I reduction project in Skyway Water and Sewer District constructed
- 2015: MWPAAC I/I Task Force

I/I in Regional Wastewater System

- Approximately 70% of peak flows are comprised of I/I
- Approximately 25% of the annual flow in the separate portion of the regional wastewater system is I/I



Scope of Work Objectives

- Build on the I/I work that the region has done previously.
- Explore options discussed by MWPAAC I/I Task Force for comprehensive and system wide I/I reduction.
- Present possible frameworks for implementation of program options.
- Develop an implementation plan for consideration when moving forward with new program elements.

Tasks



- Project Management
- MWPPAC Involvement Support
- Review of Sewer and Side Sewer Standards
- Standardized Regional Sewer and Side Sewer Inspection Program
- Private Side Sewer Programs

Task: MWPAAC Involvement Support

- Develop MWPAAC Involvement Plan
- Consultant support to King County Staff during MWPAAC Meetings



Task: Review of Sewer and Side Sewer Standards

- Verify 2004 King County Final Draft Regional I/I Control Standards, Procedures, and Policies
- Assessment of Existing Local Agency Sewer and Side Sewer Standards
- Develop an Approach to Achieve Common Sewer and Side Sewer Standards



Task: Standardized Regional Sewer and Side Sewer Inspection Program

- Evaluation of Current Inspection Program at Cities and Sewer Districts
- Outline for Standardized Regional Inspection Training Program



Private Side Sewer Programs

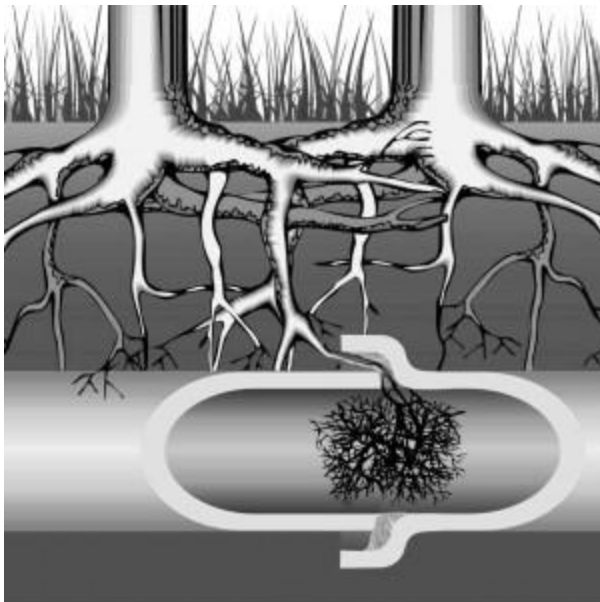
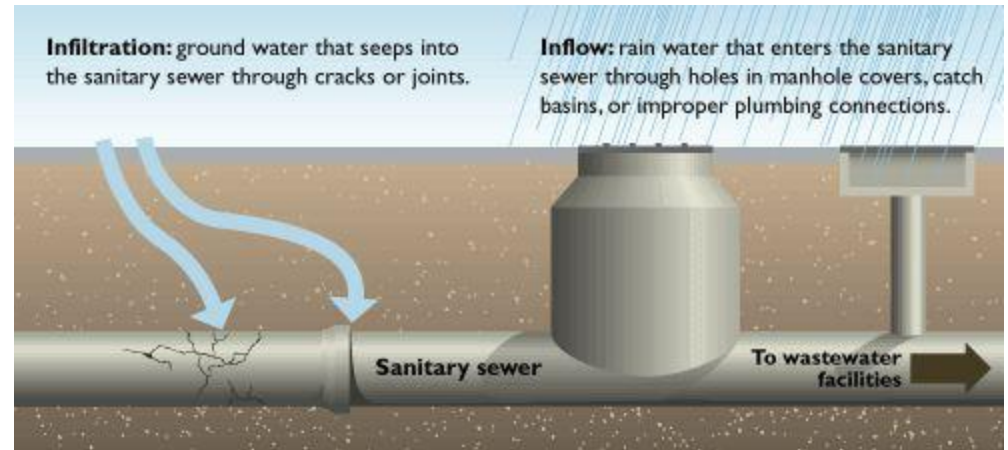
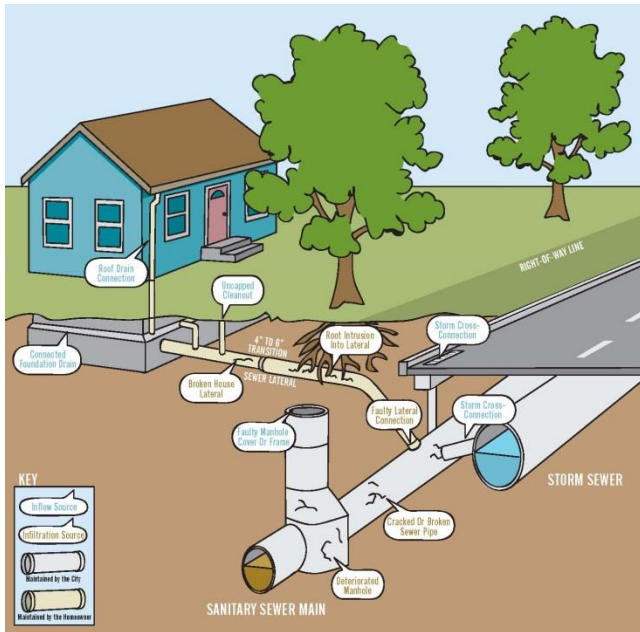
- Identification of the Types of Private Side Sewer Programs
- Evaluation of and a Framework for Side Sewer Inspection and Certification Program
- Evaluation of and a Framework for Private Side Sewer Insurance Program
- Evaluation of and a Framework for Grant of Loan Programs for Private Side Sewers



Opportunity for Review and Input on Scope of Work (SOW)

- May 26: E&P Review Draft of SOW sent to MWPAAC Distribution List
- June 2: Discussion of SOW at E&P Meeting
- June 16: Comments due to Steve Tolzman (steve.tolzman@kingcounty.gov or 206.477.5459)
 - email word document with comments noted in track changes
 - email general written text comments
 - phone conversation to orally make comments

Questions/Discussion



Steve Tolzman

steve.tolzman@kingcounty.gov

206-477-5459