



DNRP WTD

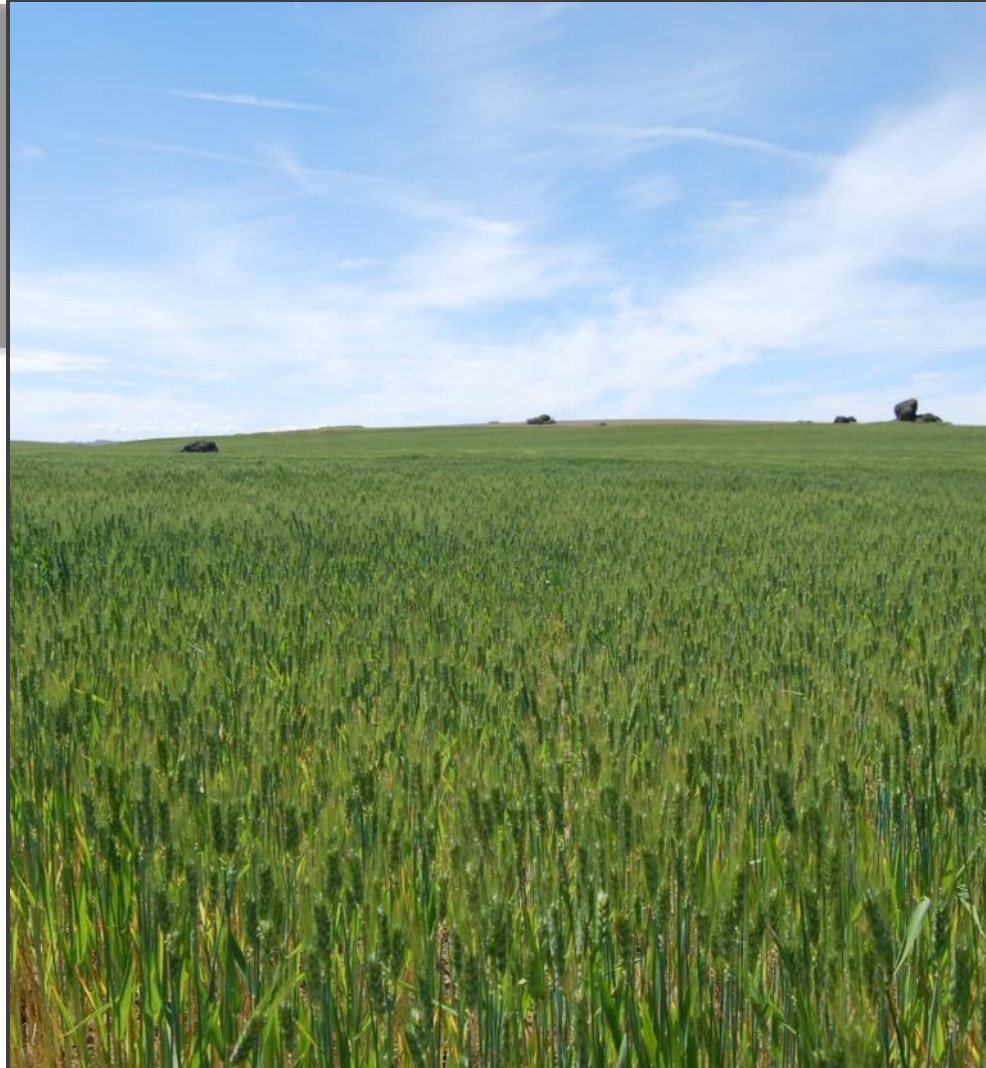
Loop® Biosolids Program

Rebecca Singer
Biosolids Program Manager,
King County WTD



Introduction

- **King County Biosolids Program**
- **Biosolids Regulations**
- **Biosolids Process**
- **Current State of KC Program**
- **Challenges/Opportunities**



King County Biosolids Program

1970's:

- Clean Water Act
- Inception of King County program
- Forest Application Begins

1980's:

- EPA award
- Expansion of Forest Application

1990's - Present:

- Ag partnership begins
- Composting partnership



Regulations

EPA 40CFR503

- Developed in 1993
- Reviewed in 1996 & 2002
- Self implemented with annual reporting

Washington State RCW 70.95J

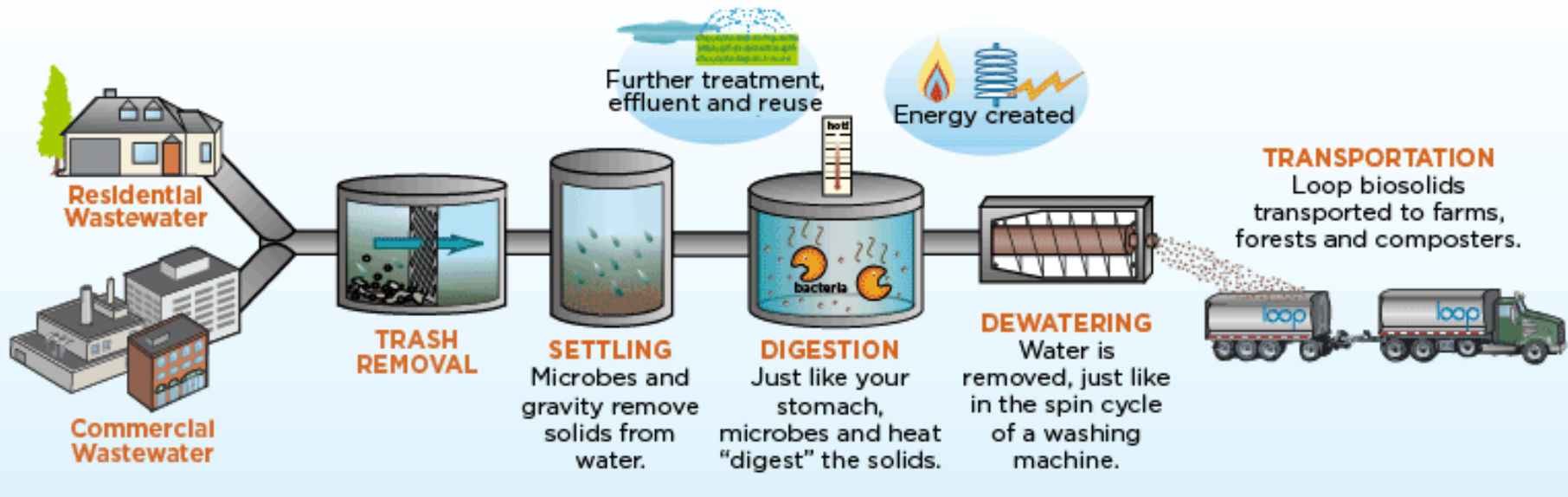
Ecology WAC 173-308

- Written in 1998
- Regulated by Ecology with annual reporting and 5 year permit cycle



Making Biosolids

WASTEWATER TREATMENT PROCESS - HOW BIOSOLIDS ARE MADE



King County makes biosolids through anaerobic digestion. This process uses bacteria to break down organic matter in the absence of oxygen. The end products are biogas and biosolids.

Why Beneficial Use?

- Reduced need for chemical fertilizers
- Improve plant growth
- Reduce soil erosion and nutrient run-off
- Alleviate soil compaction
- Help soil retain water
- Carbon Sequestration

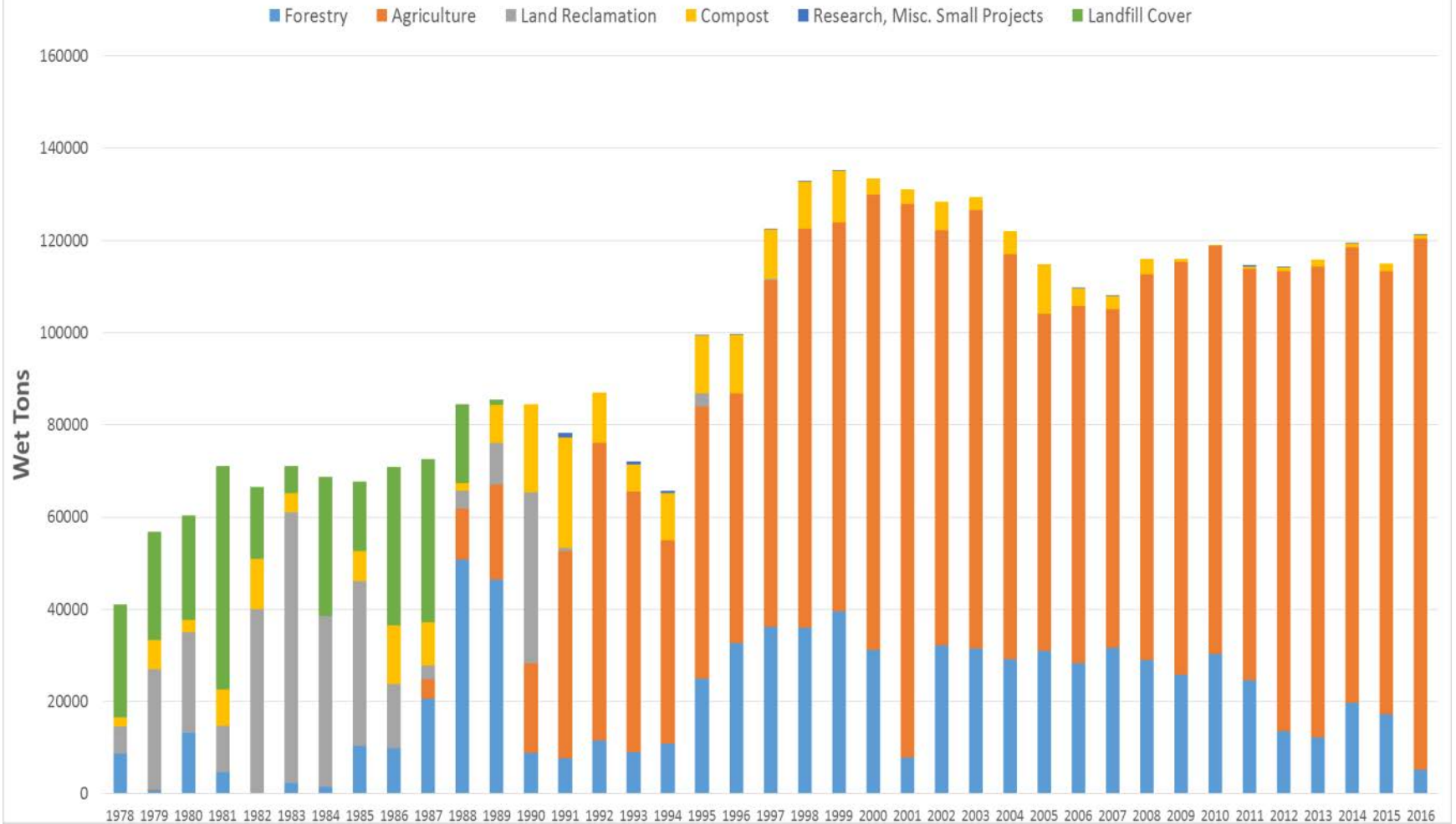


Current Biosolids Program

- Transportation
- Agriculture
- Forestry
- Outreach
- Research



Biosolids Distribution 1978-2016



Biosolids Distribution

Biosolids Hauling:

2016:

3903 trucks

OR

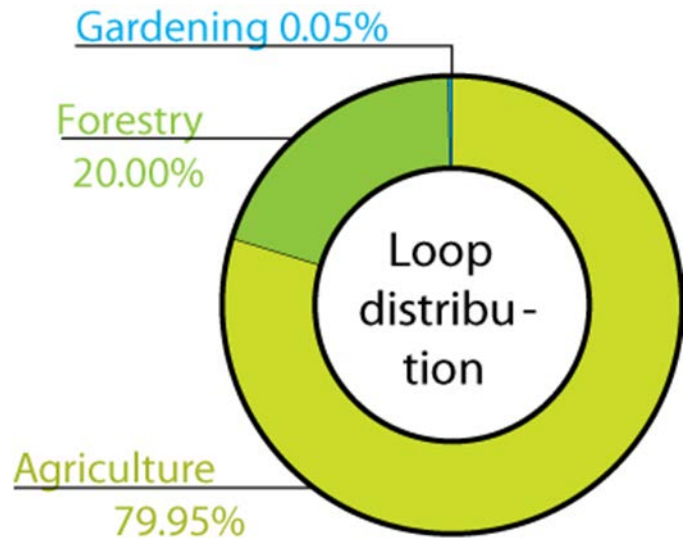
325 trucks a month

OR

15 trucks a day



distribution

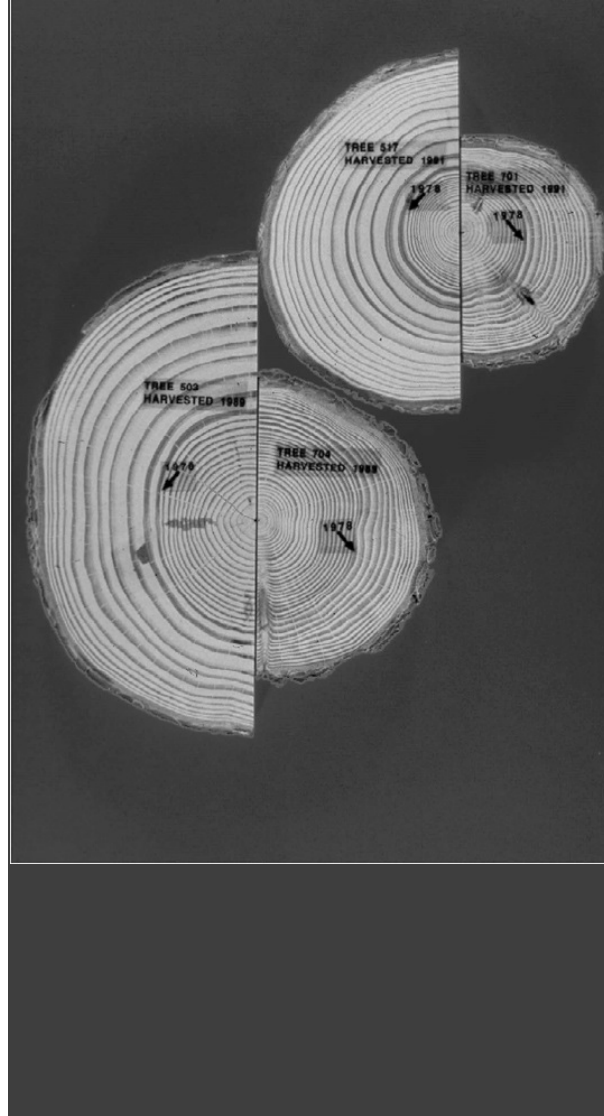


Where do we go?



Agriculture Projects

BPI – 90,000 acre partnership
NSF – year round and winter backup



Forestry Projects

DNR – 300 acres per year
Campbell – 1000 acres per year

Composting GroCo partnership

Owned and Operated by
Sawdust Supply

- Class A compost
- Less than 1% King County biosolids production
- Provides 100 yds each year for public outreach and education

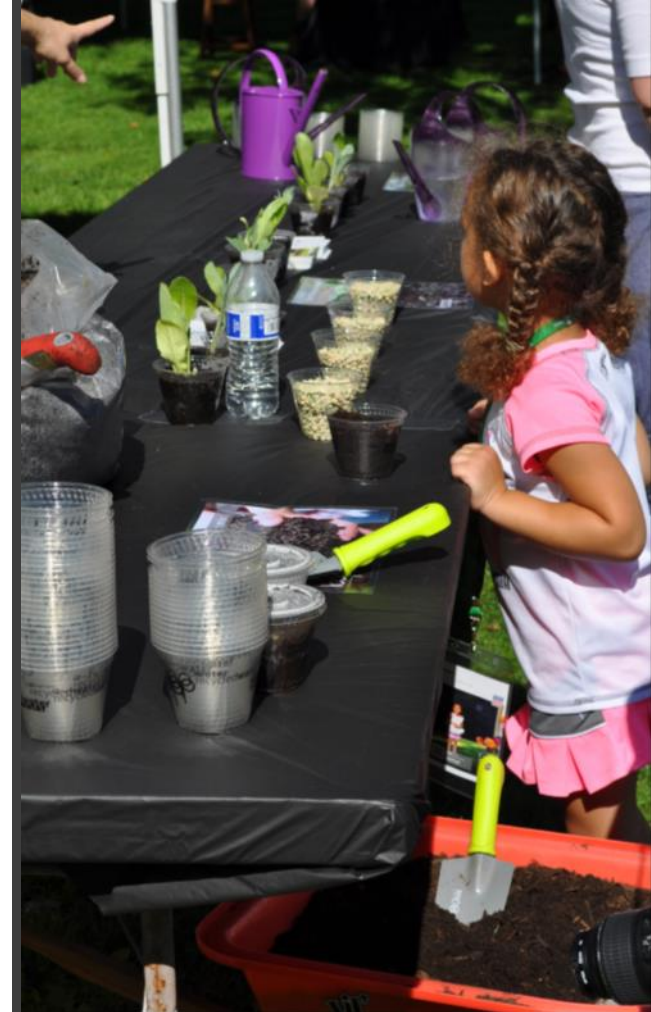




Flower and Garden Show



Touch a Truck



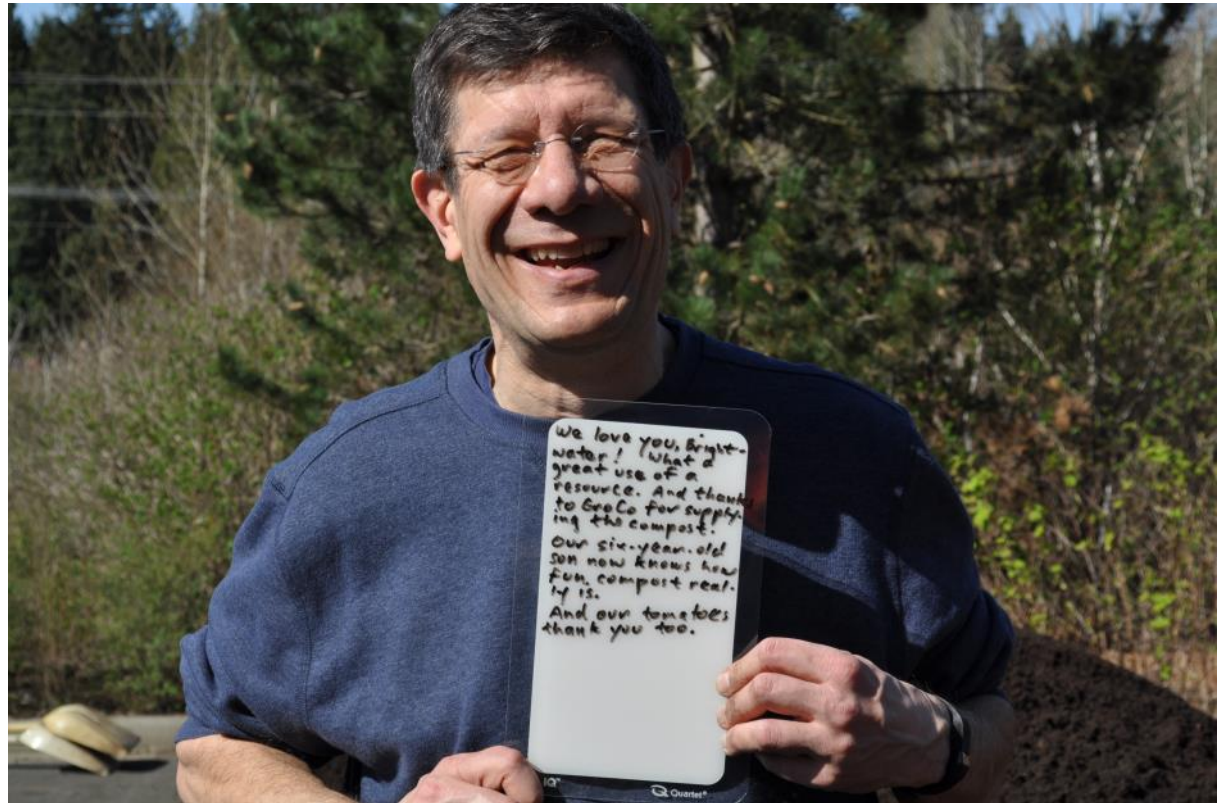
CHOMP!

Public Outreach and Communication



Research and Reclamation

What's Next?



- Find solutions to challenges faced in 2016
- Explore options for expanding market of current product
- Strategic Planning
 - Address challenges
 - Provide options for growth
 - Write a 10 year plan with a 5 year implementation strategy

Questions?

Rebecca Singer

Rebecca.singer@kingcounty.gov

