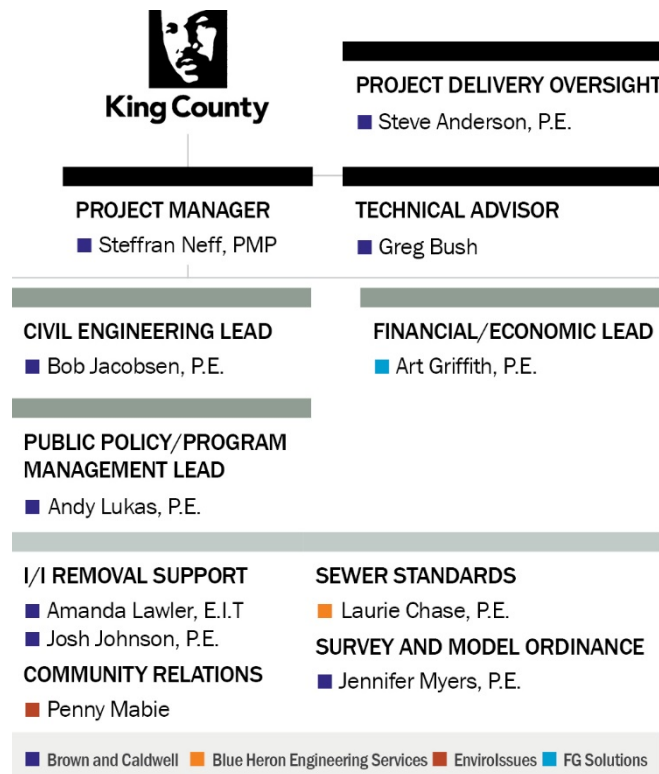


2017 Evaluation of Inflow and Infiltration Consultant Team

Project Organization Chart



Key Team Member Experience		
Title	Name and Firm	Relevant Experience
Project manager	Steffran Neff, Brown and Caldwell	Steffran Neff is a chemical engineer with more than 26 years of experience in environmental engineering. She is a certified Project Management Professional (PMP) who has worked with the King County Wastewater Treatment Division (WTD) since 2004 when she was the assistant project manager for the Asset Management Information System Development. Prior to managing the current inflow and infiltration evaluation, she also managed several work order contracts for King County WTD.
Civil Engineering Lead	Bob Jacobsen, Brown and Caldwell	Bob Jacobsen is a senior project engineer with 15 years of experience in water/wastewater treatment and conveyance-related projects. Bob's experience covers inflow and infiltration (I/I) reduction, sewer system evaluation surveys, utility design projects, hydraulic modeling, and feasibility studies. His responsibilities have included preparation of preliminary and final engineering documents including plans, specifications, and cost estimates; planning studies and reports; and project and construction management. He is National Association of Sewer Service Companies (NASSCO) Pipeline Assessment and Certification Program (PACP) certified and has led the inspection and evaluation efforts on a variety of different sewer systems, including developing and implementing recommendations for rehabilitation or replacement of deficient pipes.

2017 Evaluation of Inflow and Infiltration Consultant Team

Key Team Member Experience		
Title	Name and Firm	Relevant Experience
Policy/Program Management Lead	Andy Lukas, Brown and Caldwell	Andy Lukas has extensive experience in wastewater and stormwater facility planning and design, with particular expertise on capacity studies of systems that experience significant wet weather flows. Recently he has led or served in technical advisory roles on important regional infiltration and inflow (I/I) control projects, multi-jurisdictional flow-reduction programs, and private property I/I (PPII) programs. As the company's wet weather initiative leader, Mr. Lukas is engaged on strategic projects that are being driven by state and federal consent orders related to wet weather compliance issues. He regularly collaborates with client and outside attorneys on policy and legal PPII and wet weather topics.
Financial/Economic Lead	Art Griffith, FG Solutions (SCS)	Art Griffith is a registered professional engineer with over 23 years of experience providing utility financial services to water, wastewater, stormwater, and solid waste utilities. Specific areas of expertise include utility ratemaking, financial planning, impact fee determination, interlocal agreement preparation, fiscal policy and level-of-service definitions. Mr. Griffith integrates his engineering and financial experience to create financially viable capital improvement plans, enhance the quality of the financial analysis, and his ability to communicate the results.
Sewer Standards	Laurie Chase, Blue Heron Engineering Services (SCS)	Laurie Chase brings I/I control program experience from her work with Columbus Ohio, Lexington Kentucky, and Louisville (KY) MSD. She has more than 30 years of experience dealing with I/I, including performing field investigations, overseeing hydraulic modeling, and developing I/I removal/redirection capital improvement and private property programs. During her career, Laurie has served in regulatory, municipal, consulting, and construction roles, including serving as Columbus' I/I Program Manager from 1995 – 2001. Laurie has been a member of the Water Environment Federation (WEF) Collection Systems Committee since 1996, and she is a co-Founder and current team leader of WEF's Private Property Virtual Library initiative (http://www.wefppv1.org/WEF-PPVL-library/).
Community Relations Lead	Penny Mabie, Enviroissues	Our community relations lead Penny Mabie will have a key role in outlining an effective communication strategy to gain input from private property representatives. Penny has 17 years of experience working with King County WTD, its stakeholders and communities on projects including treatment plant siting and design, conveyance design and construction, combined sewer overflow planning and capital projects, reclaimed water and biosolids efforts, and developing public involvement guidelines for the division. Penny is a licensed trainer for the International Association for Public Participation, and has trained many of our region's public participation practitioners. Penny is an outcome-oriented facilitator and has facilitated advisory committees, task forces and stakeholder groups for facility siting and design (Murray CSO), workshops for community-based design (Fremont Siphon) and public meetings at all stages of a project's life-cycle (North Beach CSO, SPU Broadview, SPU Madison Valley Stormwater, and many more.)