

# GroCo™ typical lab results: **quality**

GroCo is made by composting Loop biosolids and sawdust from local mills together for more than one year.

GroCo is tested to ensure quality and safety.

	<b>GroCo compost</b>	<b>US Composting Council Seal of Testing Assurance Standard</b>
Organic matter	85.60%	At least 40%
C/N ratio	35	
pH	6.8	6.0 - 8.0
Conductivity (EC)	4.4	
Stability	0.06 "very stable"	7.0 or below
Seedling emergence	100%	At least 80%
Seedling vigor	100%	At least 80%

## **Major nutrients**

Total nitrogen	1.24%
Available nitrogen	0.24%
Organic Nitrogen (slow-release)	1.00%
Phosphorus (as P <sub>2</sub> O <sub>5</sub> )	2.04%
Potassium (as K <sub>2</sub> O)	0.19%
Sulfur	0.33%
Calcium	0.90%
Magnesium	0.23%

## **Micronutrients**

Iron	5917 parts per million (ppm)
Manganese	263 ppm
Boron	9 ppm
Copper	136 ppm
Zinc	304 ppm

<b>Particle Size</b>	"fine"
Percent passing 1"	100%
Percent passing 5/8"	100%
Percent passing 1/4"	96%

*results of  
safety testing  
on other side*

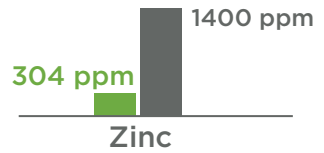
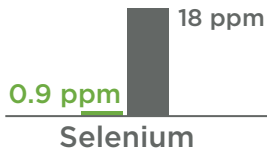
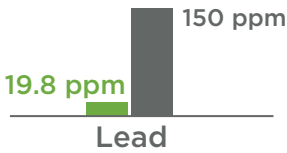
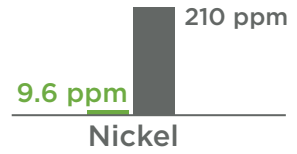
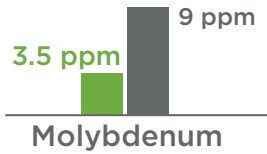
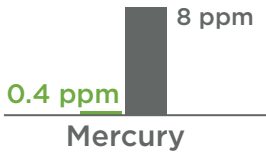
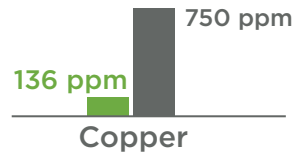
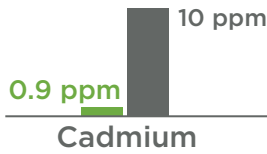
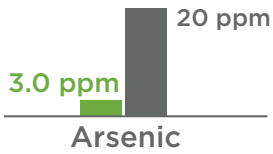


# GroCo™

## COMPOST

# GroCo™ typical lab results: **safety**

## KEY



*results of  
**quality** testing  
on other side*