

What's in  
**your**  
compost?



GroCo<sup>TM</sup>  
COMPOST





Loop® is a fertilizer replacement King County makes by transforming 100% of the poop and food that goes down toilets and drains. Loop is used on farms, forests, and made into a high-quality compost for home gardens and landscapes. Currently, Loop is mixed with sawdust to create a clean, pathogen-free compost called GroCo™.



## COMPOSTING

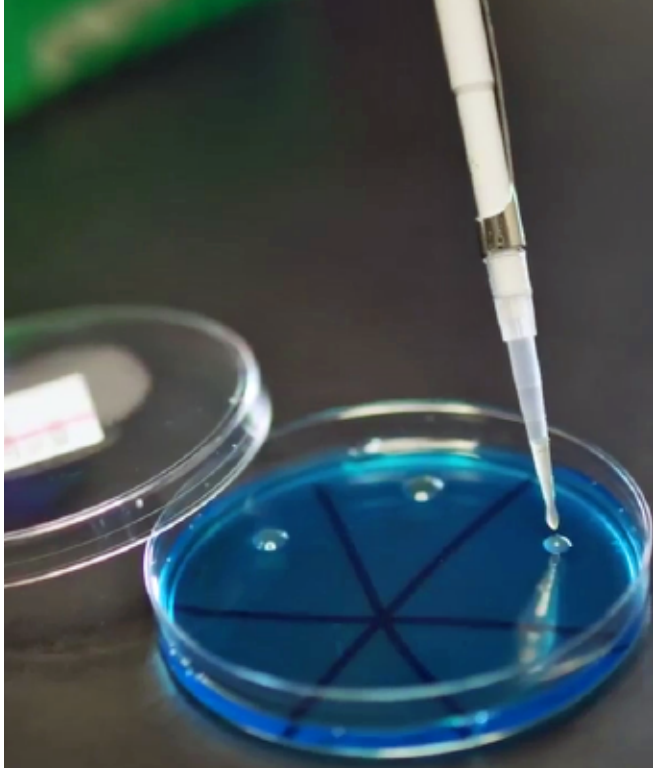
Composting is the process of mixing nitrogen-rich materials, such as biosolids, food waste, or steer manure, with carbon-rich materials, such as wood waste or sawdust, and ensuring they get hot enough to kill off any pathogens and breakdown into organic material that is suitable to mix with your soil.

Composting is a sustainable way to reuse waste products and return nutrients to the soil where they belong.



## TESTING

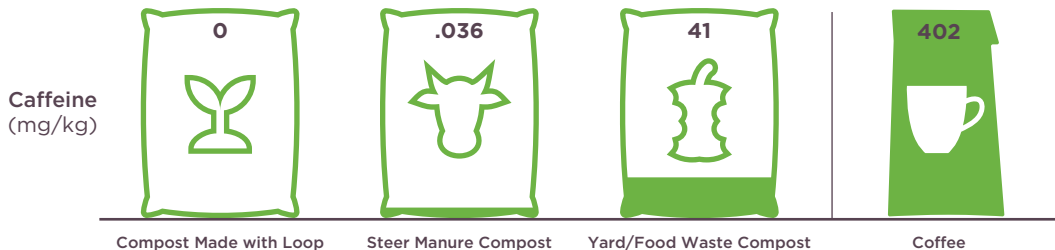
King County's accredited lab regularly tests Loop for chemicals and metals to ensure the safety, quality, and consistency of our product. Because almost everything we use outside and in our homes contains chemicals, it makes sense that some of them go down our drains. The lab can test for a wide range of things, from caffeine and potassium, to pharmaceuticals, like ibuprofen, triclosan, and acetaminophen. **Loop has met all environmental standards for more than 30 years!**



# CHEMICALS FROM YOUR CABINETS

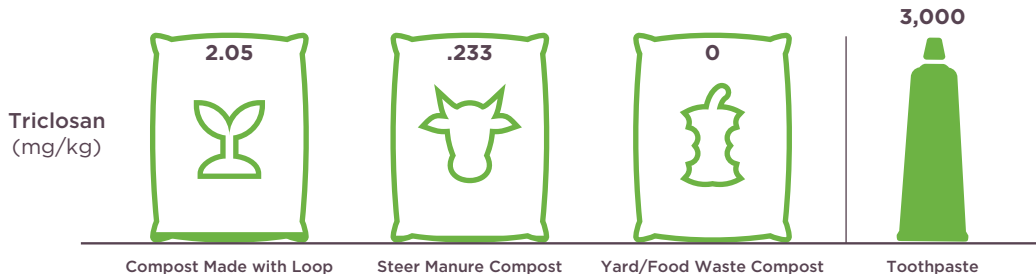
## Caffeine

All those coffee grounds we're putting into our yard waste makes a difference! Coffee grounds are great for your plants because they contain nitrogen, but they also have caffeine. **Even so, caffeine is, on average, just .004 percent of yard and food waste compost!** Our wastewater treatment process is effective at removing caffeine and many other chemicals before Loop is composted.



## Triclosan

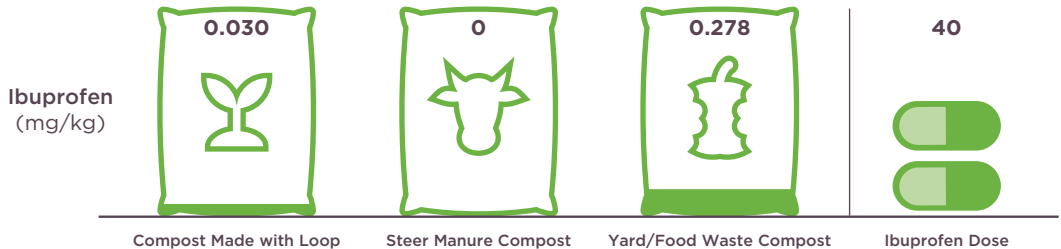
Triclosan, a common ingredient in soap and toothpaste, easily goes down the drain, so it ends up in compost made with Loop. On the other hand, it wouldn't make sense to see triclosan in yard waste compost, since not many people are putting their toothpaste in the yard waste bin!



*An important factor to keep in mind is that the tiny amount of these compounds in any sort of compost is practically microscopic compared to the amount in the original sources. **Everything in compost comes from something else, much of which we interact with safely every day.***

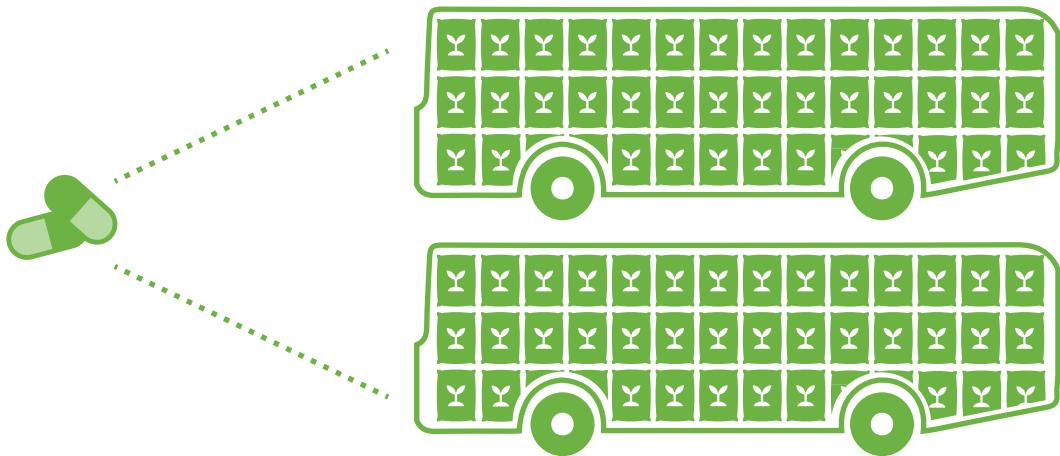
## Ibuprofen

Your compost is no substitute for the ibuprofen in your cabinet! Compost made with Loop has more than 1000% percent less ibuprofen than a single dose for an average 10-year-old child.



## Acetaminophen

You'd have to eat two metro buses of Loop to get the same amount of acetaminophen you would get in two tablets (one dose).



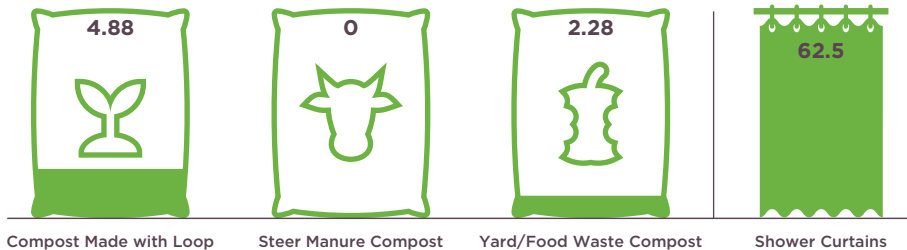


# PLASTICS

## Plasticizers

Plasticizers are chemicals added to plastics to make them flexible. They are used in everything from shower curtains, to garden hoses, to furniture upholstery. As with any other chemical, the more common it is in everyday life, the more likely it is to be in our compost.

Plastics  
(mg/kg)

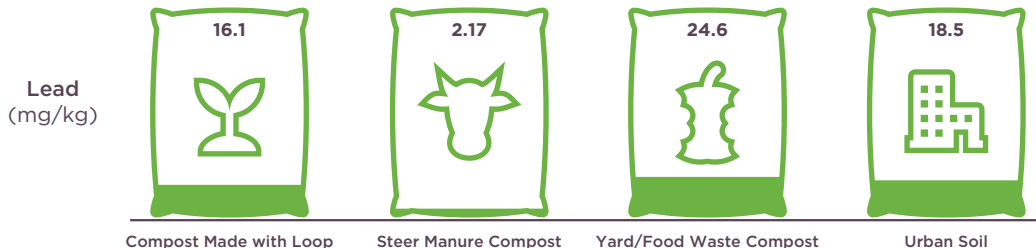


# METALS

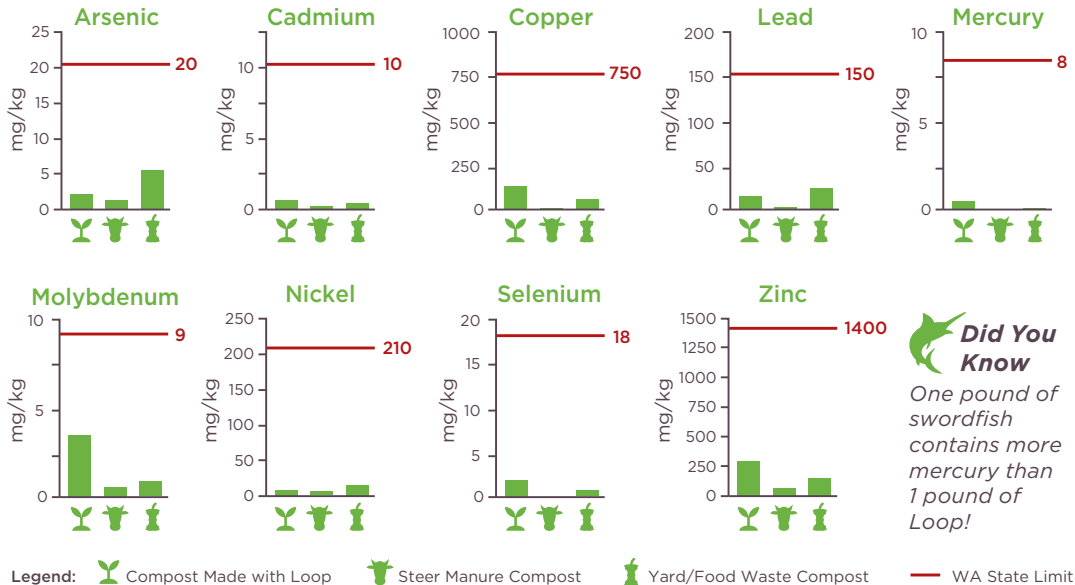
## Lead

The amount of lead coming to wastewater treatment plants has decreased over the years as households have replaced lead pipes, so the lead present in compost made with Loop is FAR below the 150 mg/kg safety limit set by WA State (almost ten times below).

In fact, compost made with Loop is just like any other compost. All metals are far below the state safety limits!



# Metals in Compost Compared to the WA State Safety Limit



**Did You Know**  
 One pound of swordfish contains more mercury than 1 pound of Loop!

## COMMERCIAL WASTE

You may be thinking, okay, I know what I put down my drains, but what do other people and businesses put down their drains?

Commercial waste makes up less than five percent of our wastewater stream and a lot of it comes from sources you might not expect, like food processors and breweries. Industries contributing to the wastewater treatment stream pre-treat their waste by filtering out heavy metals and other harmful substances, before they send it to King County treatment plants. **It's a double-whammy of dilution and proactive treatment!**



***Less  
than  
5%!***

## A THOROUGH INVESTIGATION

We test for 173 different chemicals in Loop and find very few of them. Every month, we look for metals, pathogens, plastics, petroleum-based products, flame-retardants, solvents, cleaners, pesticides, and more.

You can find our data online, but if you want to talk about our test results, contact us!

**King County Loop Biosolids**  
206-477-5557  
[loop@kingcounty.gov](mailto:loop@kingcounty.gov)

[loopforyoursoil.com](http://loopforyoursoil.com)  
[kingcounty.gov/biosolids](http://kingcounty.gov/biosolids)





**King County Loop Biosolids**  
206-477-5557  
loop@kingcounty.gov  
[loopforyoursoil.com](http://loopforyoursoil.com)



**Want to stay in the loop?**  
Text **KING LOOP** to **468311**

\*Message and data rates may apply.

1811\_9392E\_LOOP\_Compost\_Comparison\_Brochure.ai