

Legislation, Conferences, Events and Key Dates

REGARDING KING COUNTY
AGRICULTURE

OCT 2022



King County Events and Public Meetings

- <https://www.kingcounty.gov/about/news/events.aspx>
- Covid Vaccination Pop-Ups continue across the County
- Holidays
 - Indigenous People's Day – October 10
 - Veteran's Day – observed Nov 11
 - Thanksgiving Holiday – November 24 & 25
- Council Meetings every Tuesday, 1pm

Winery, Brewery, Distillery Actions

Monday, October 17, 2022 Committee of the Whole meeting

9. Proposed Ordinance No. 2022-0412

AN ORDINANCE declaring a one-year moratorium prohibiting the acceptance of applications for the establishment of new or expansion of existing wineries, breweries, distilleries and remote tasting rooms, as primary or accessory uses or as home occupations or home industries; and prohibiting temporary use permits for wineries, breweries, distilleries and remote tasting room; and establishing a work plan to evaluate the next steps for the regulations regarding these uses.

Sponsors:

Perry

Letter
submitted
to the Ag
Commission

Regarding Farmland
Preservation in the Kent
area from Cheynelle Tyack

Letter and response from
staff liaison in mtg packet

Ag Commission Field Trip in September

KING COUNTY AGRICULTURE COMMISSION		
FIELD TRIP		
THURSDAY SEPT 8, 2022		
4:45-7:00 P.M.		
CARNATION/FALL CITY		
IN-PERSON!		
ITINERARY		
4:30	Optional before the meeting... Drive past and view 2 commissioner's farms from the road: <ul style="list-style-type: none"> Nayab Khan's Henna's Blueberry Farm: 6304 329TH AVE NE, 98014 (mostly off 60th; aerial photo below) Janet Keller's Dairy Farm: 1931 WEST SNOQUALMIE RIVER RD SE, 98024 (aerial photo below) 	
4:45	Arrive at Snoqualmie River Farm: 1550 WEST SNOQUALMIE RIVER RD NE, Carnation, WA 98014 (adjacent to the Blue Heron Golf Course)	
5:00	Welcome, Introductions and Field Trip Details	Kevin Scott
5:20	Station 1: History of the Farm <ul style="list-style-type: none"> Acquisition of Property Farmland Leasing Program 	Richard, Melissa, Bee
5:35	Station 2: Happening On this Farm/Farm Infrastructure <ul style="list-style-type: none"> SVT Experience Farming Project KC ADAP, entry road improvements FFF Ag Strategic Plan: key examples on this farm – ADAP, farm pad, elevated home, bank erosion, flood safety 	SVT, Melissa Richard, Melissa, Bee Patrice, Janet, Carrie
5:50	Station 3: Farming in this Valley <ul style="list-style-type: none"> Keller Dairy Farm Henna Blueberry Farm 	Janet Keller Henna Khan
6:10	Station 4: Multi-benefit Resource Lands <ul style="list-style-type: none"> KC Habitat plans Livestock on KC farms? 	Richard, Melissa Richard, Darron, Patrice
6:30	Station 5: Farm Infrastructure <ul style="list-style-type: none"> Elevated home plans 	Richard/Melissa
6:40	Thoughts on the Farm and Refreshments	Kevin Scott and Commissioners
7:00	End Tour and Optional Socializing Time	Kevin Scott

Next Meeting: October 13, 2022

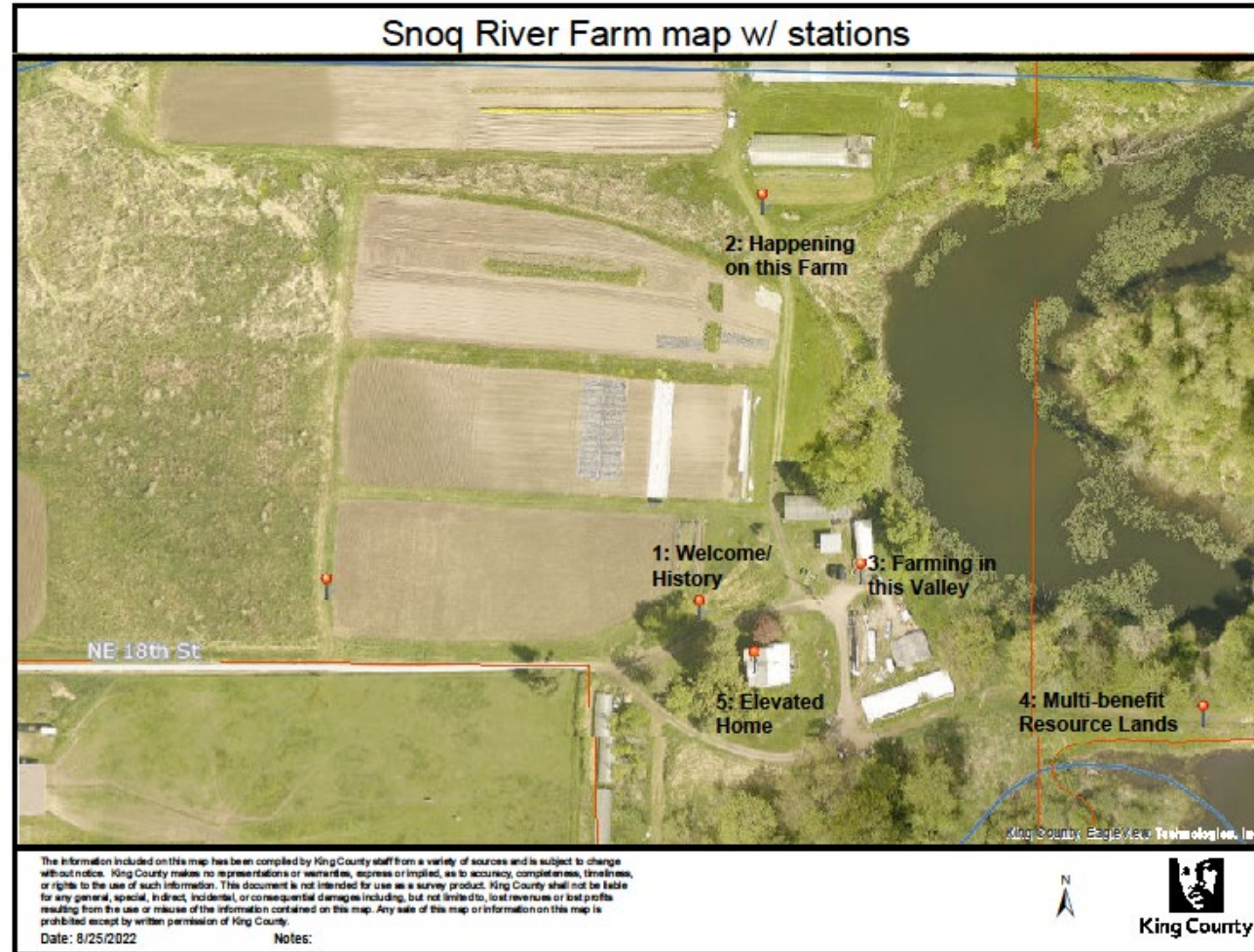
Henna Blueberry Farm in orange
6304 329TH AVE NE, 98014



Keller Dairy Farm in light blue
1931 WEST SNOQUALMIE RIVER RD SE, 98024



Ag Commission Field Trip in September





Ag Commission at Snoqualmie River Farm September 2022
Left to Right: Presenters Henna Khan (Henna Blueberry Farm) and Sean Stratman (SnoValley Tilth Experience Farming Project), Patrice Barrentine (Commission staff liaison), and Commissioners Jessi Bloom, Henry Wong, Kevin Scott, and Janet Keller

King County's Horseneck Farm



Newsroom

Natural Resources and Parks
Public Affairs

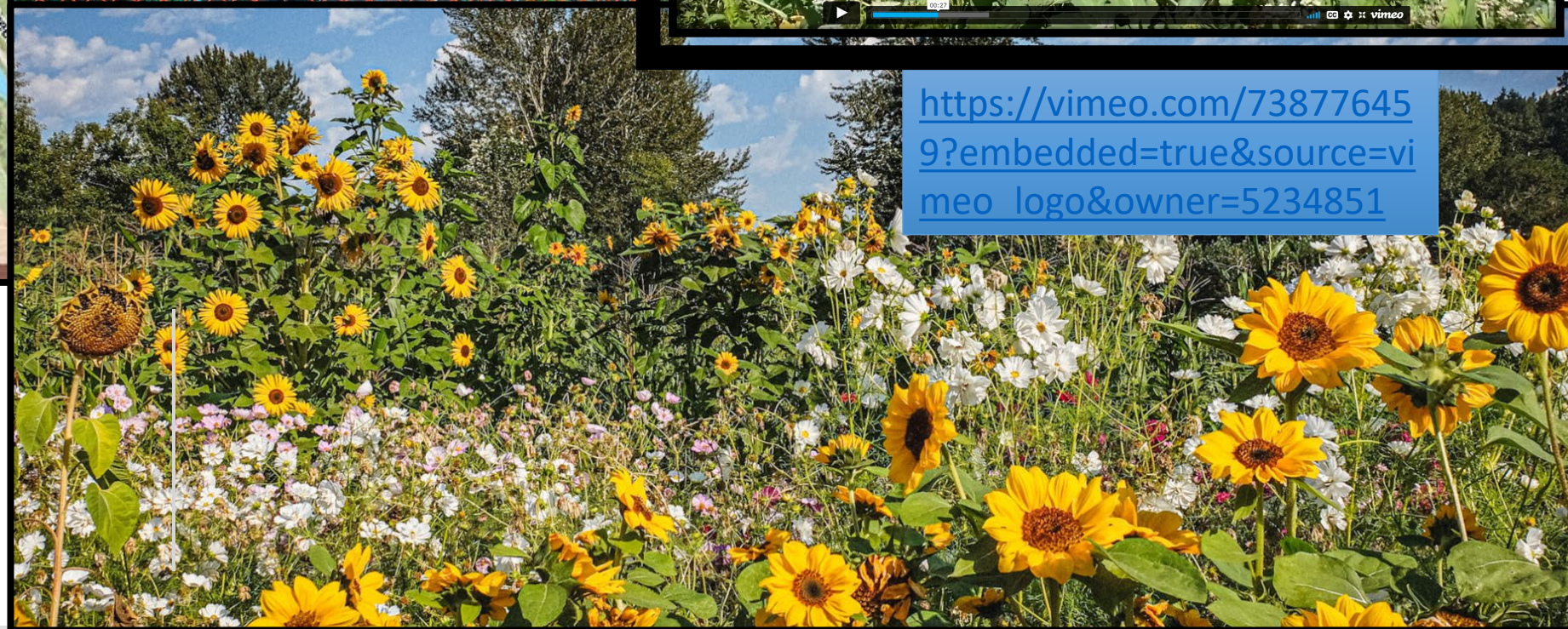
Executive Constantine wants to replicate King County's success at making protected farmland more accessible to immigrant and refugee farmers, strengthening the local food economy

August 31, 2022

Summary

Executive Constantine recently toured King County-owned farmland along the Green River that is providing more equitable access to the local food economy. King County is gradually transitioning the farmland from a single, corporate-owned farm business to one that better reflects the racial and cultural diversity of South King County and produces more culturally relevant food that is more available at local farmers markets.

<https://kingcounty.gov/depts/dnrp/newsroom/newsreleases/2022/August/31-Horseneck-Farm.aspx>.



https://vimeo.com/738776459?embedded=true&source=vimeo_logo&owner=5234851

Horseneck Farm

Horseneck





Fall Agritourism

- Muddy Boots, Duval
- Jubilee Farm, Carnation
- Remlinger Farms, Carnation
- Oxbow Farm and Conservation Center, Carnation
- Baxter Barn, Fall City
- Fall City Farms, Fall City
- Fox Hollow Farm, Issaquah
- Carpinito Brothers, Kent
- Mosby Farms, Auburn
- Thomasson Family Farm, Enumclaw

Tilth Conference

Thursday, November 10 – Saturday,
November 12
Kennewick and online



<https://tilthalliance.org/our-work/wa-farming-agriculture/tilth-conference/>



Annual Meeting 2022

November 15 – 17, 2022

Wenatchee, Washington

WA FARM BUREAU

<https://wfbannualmeeting.com/>

Resilerator Northwest: Business Skills Intensive For Mid-Scale Farms

Looking to grow your farm business into a thriving and resilient enterprise? Seeking a strong foundation to scale up your production and systems? The Resilerator is like a business accelerator, but with an emphasis on long term sustainability instead of the rapid pursuit of short term profits.

Join the Northwest Agriculture Business Center for an 11-week business skills intensive. Limited to a small number of growers, this cohort-based program will meet weekly from October to December 2022 for discussions with experts and farmer peer-to-peer support. Topics covered include business structures, labor, accounting and taxation, credit and cash flow, insurance, environmental and marketing regulations, and branding.

Our program will begin with each participant completing a thorough Business Resilience Assessment. During the program, participants will use the Self-Assessment to identify goals and actions to be taken. At the end of the program, each participant will receive an hour of one-on-one technical assistance related to their goals.

Each week participants will watch a video on their own time, then come to class prepared with questions for an in-depth discussion. Each class will have a local farmer or service provider to provide a short presentation and enhance the discussion.

FARMER CAMPUS PORTAL,
VIA VIRTUAL ZOOM PLATFORM

Register Here!

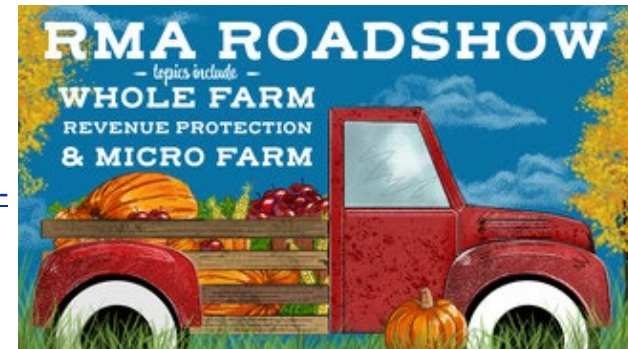
Who is eligible?

This agricultural intensive has been designed for (but not limited to) mid-scale farmers who:

- Operate in Island, King, San Juan, Skagit, Snohomish, Whatcom, Lewis, Thurston, Grays Harbor, Pacific, Mason, or Pierce counties.
- Can commit to ~40 hours of time over 3 months
- Have a current gross farm income of ~\$100,000 or higher annually
- Have been in operation for three or more years
- Have been selling wholesale at least one year or accessing market channels beyond farmers market and CSA
- We will accept up to 15 farms into the program. Each farm is encouraged to attend with all of the owners and key business managers.

Virtual Workshops Highlight Improvements to Whole-Farm Revenue Protection and Micro Farm

The U.S. Department of Agriculture (USDA) is offering virtual workshops – on Oct. 11, Oct. 13, Nov. 15, and Dec. 13 – for agricultural producers and stakeholders to learn about the latest updates and improvements to the [Whole-Farm Revenue Protection](#) (WFRP) and the [Micro Farm](#) insurance options, two of the most comprehensive risk management options available. These insurance options are especially important to specialty crop, organic, urban, and direct market producers, and this is part of the USDA's Risk Management Agency (RMA) efforts to increase participation in these options and crop insurance overall.



RMA will host these workshops for agricultural producers via Microsoft Teams events:

- [Tuesday, Oct. 11 at 11 a.m. ET \(click to join\)](#)
- [Thursday, Oct. 13 at 4 p.m. ET \(click to join\)](#)
- [Tuesday, Nov. 15 at 8 p.m. PT \(click to join\)](#)
- [Tuesday, Dec. 13 at 11 a.m. ET \(click to join\)](#)

RSVP is not required. Attendees will have a chance to submit written questions during the event.

Firefighters extinguish fire at Tacoma Tideflats industrial plant

The only rendering plant in Western WA burned down Sept 27th in TACOMA.

DAR PRO Meat Waste Recycling into biofuel, animal food, solvents and more



October issue features

Fall Seasonal Foods to buy

from local farms and markets



WHAT'S
IN SEASON
WINTER SQUASH

WHAT'S
IN SEASON
FALL!

WINTER SQUASH IS MY GO TO FOR A QUICK, COMFORTING, WINTER MEAL*



Acorn

This little cutie makes a perfect side dish. Cut it in half and bake facedown.



Blue Hubbard



Butternut

Ultimate soup squash. They can be large. Cube the inner flesh and freeze cooked or uncooked for quick access later on.



Carnival

Another cutie that can be roasted as a side dish.



Delicata

Sweet and easy to prepare. No peeling required. Cut into slices and roast with the skin on.



Kabocha

The skin is edible. Wash well, cube and add to soups and stews.



Red Kuri

Also known as Hubbard. Boil for a fall mash. Add cumin or cinnamon for extra flavor.



Spaghetti

Cut in half. Bake or steam. Use a fork to create a noodle texture. Serve with your favorite pasta sauce.



Futsu black



Sweet Dumpling

Cut off the top, scoop out the seeds, add butter or olive oil. Put its lid back on and roast for 1 hour.



Turban

Halve it, drizzle with olive oil and Kosher salt. Roast cut-side down for 45 mins or until tender.

*REMOVE SEEDS FROM ALL VARIETIES. DON'T TOSS THEM, ROAST THEM!

Remove as much pulp from the seeds as you can. Pat the seeds dry. Toss the seeds in olive oil, salt and spices. Spread in a single layer on a roasting pan. Bake at 350° for 15 minutes. Stir. Continue baking for another 5 to 10 minutes or until the seeds are golden and crunchy.

HERBS



Cilantro

(until the first freeze)



Rosemary



Sage



Tarragon



Thyme

PRODUCE



Apples & Pears



Beets



Bell pepper



Brussel Sprouts



Cabbage



Chanterelles



Eggplant



Fennel



Garlic



Hot Chilis



Leeks



Morels



Onions



Potatoes



Pumpkins



Spinach



Winter Squash



Zucchini

STOCK UP ON PRODUCE TO STORE FOR THE WINTER. GARLIC. ONION. POTATOES. SQUASH. PUMPKINS.

King County



Best of Season



King County



King County DNRP WLRD

Events and in the News!

Happy fall, It's [Salmon SEEson](#)! With more than 30 recommended spots to see salmon throughout King County, don't miss this chance to show your family and friends how your work – directly or indirectly – is connected to salmon recovery.

Here's a look at a few upcoming WLRD items in October and several items from September in case you missed it (ICYMI).

Coming up this month

- [Salmon SEEson](#)
- October is Flood Awareness Month
- 10/4 & 10/6 – [King County Flood Plan kick off meetings](#).
- 10/12 – Kokanee Work Group's Ceremonial Kokanee Fry Release

September ICYMI

- 9/7 – [King County seeks volunteer from northwest Seattle for advisory committee that helps guide open space conservation](#)
- 9/9 – [Can blockchain help King County's urban carbon credits go further? | KNKX Public Radio](#)
- 9/12 – [Volunteers needed for Community Salmon Investigation \(CSI\) for Highline - The Normandy Park Blog](#) [Feat. Iris Kemp]
- 9/13 – [Salmon Killing Chemicals Can Be Treated with Bioretention, but King County Says No | The Urbanist](#)
- 9/15 – [Tribe, County, Reach \\$5M Settlement Deal Over Sewage Spills \(usnews.com\)](#)
- 9/15 – [On the Puget Sound, the Women Whose Lives—and Work—Revolve Around Salmon | Condé Nast Traveler \(cntraveler.com\)](#)
 - Related ICYMI – [Salmon People | Short Film by Setting Sun Productions – YouTube \(2014\)](#)
- 9/16 – [King County moves toward \\$5 million settlement with Suquamish Tribe over sewage overflows | The Seattle Times](#)
- 9/21 – [King County aims to create healthier forests, prevent wildfire spread | king5.com](#) [Feat. Paul Fischer]
- 9/22 – [‘Salmon SEEson’ returns: Where to spot fish as they come home to spawn in King County rivers and streams – King County](#)
- 9/23 – [King County may offer loans to help people replace old furnaces | The Seattle Times](#)
- 9/26 – [Help King County prepare communities for more frequent, severe floods that are occurring due to climate change - King County](#)
- 9/26 – Editorial: [Don't further burden taxpayers to fund Seattle, King County governments | The Seattle Times](#)

Stay informed...

- Subscribe to [The Evergreen](#) (DNRP's newsletter).
- Follow [WLRD & DNRP on your favorite social media channels](#).
- Visit the [DNRP Newsroom](#).