

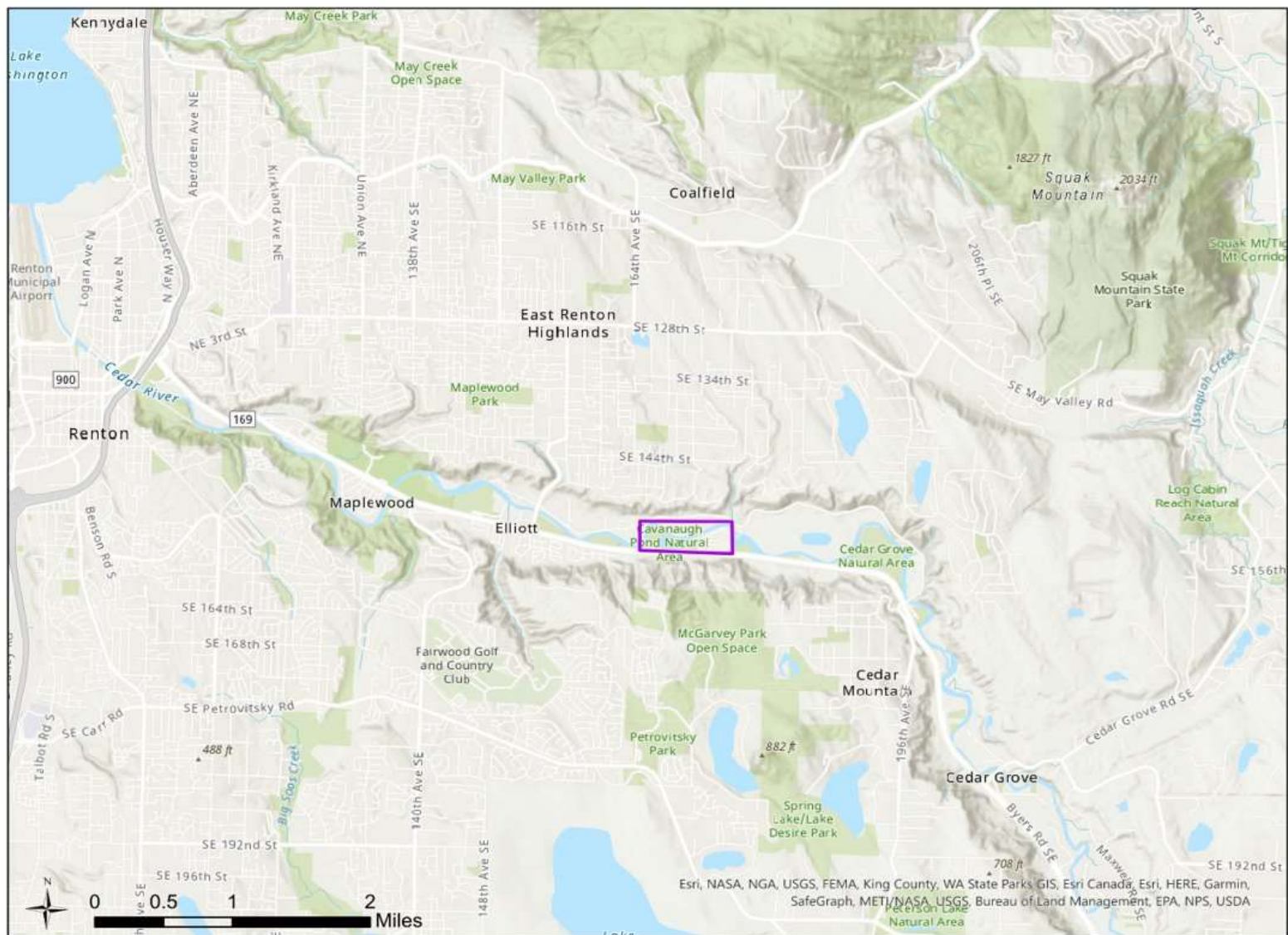
Riverbend Levee Setback and Floodplain Restoration

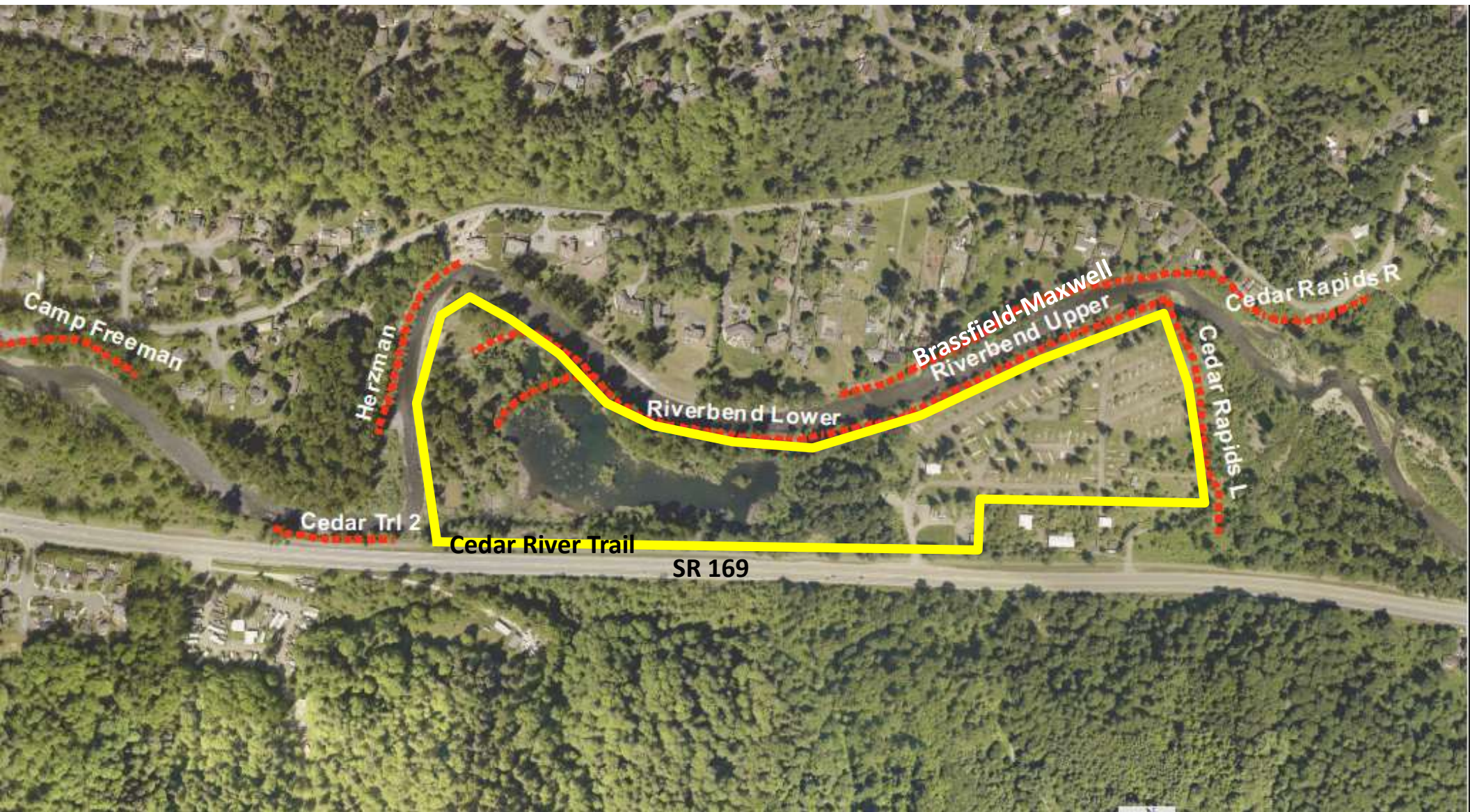
Jon Hansen, Project Manager
November 16, 2021



King County

Department of Natural Resources and Parks
Water and Land Resources Division
Rural and Regional Services Section





Camp Freeman

Herzman

Cedar Trl 2

Cedar River Trail

SR 169

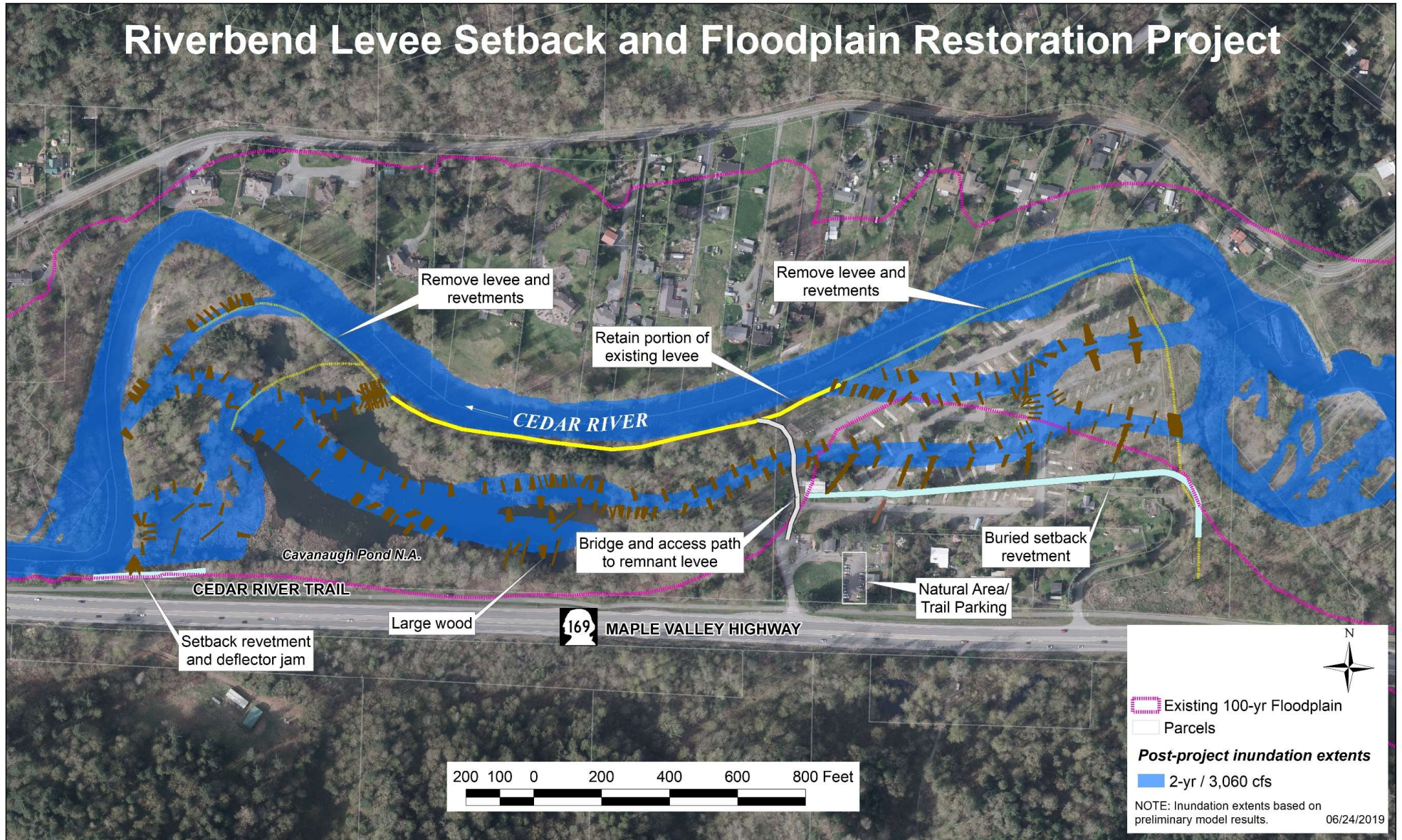
Riverbend Lower

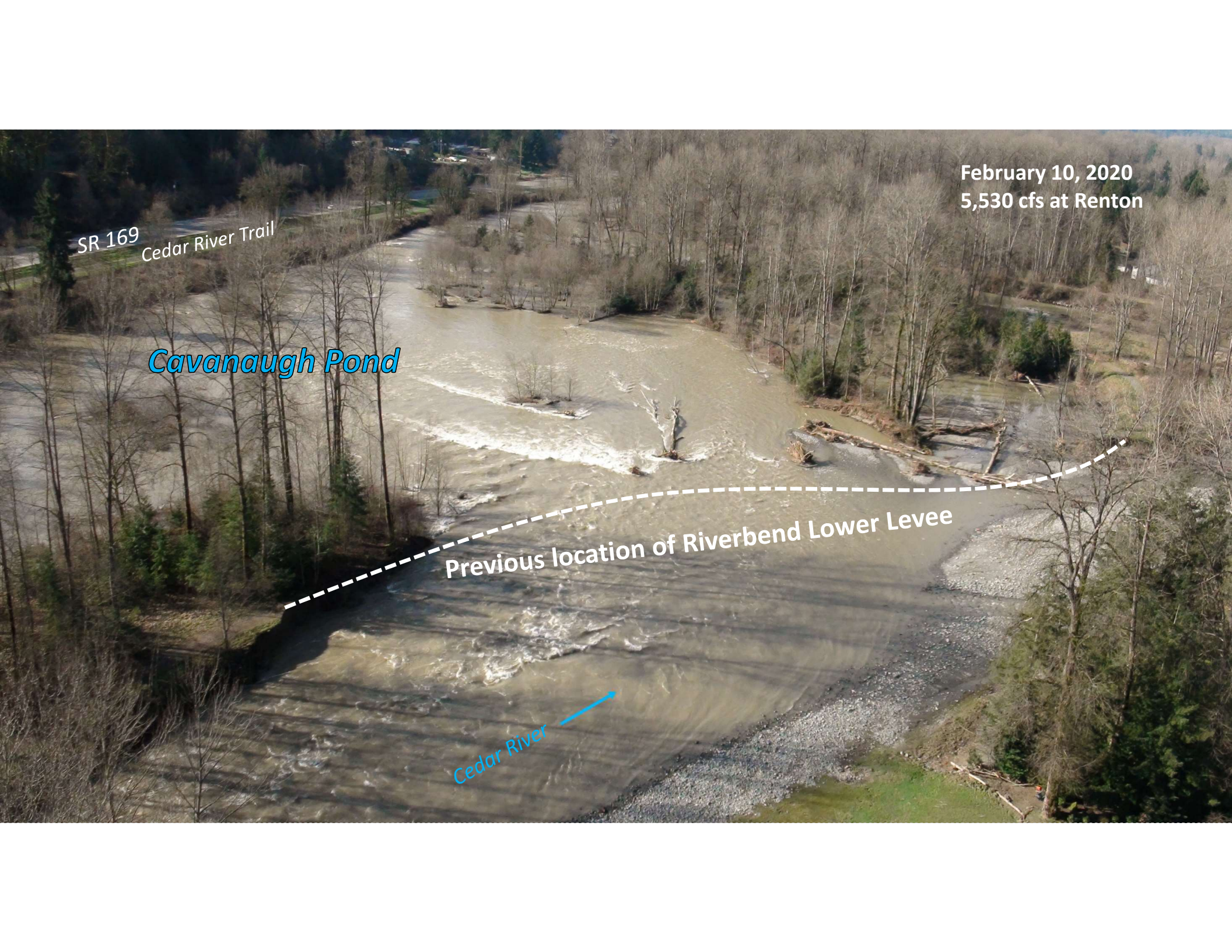
Brassfield-Maxwell
Riverbend Upper

Cedar Rapids R

Cedar Rapids L

Riverbend Levee Setback and Floodplain Restoration Project





February 10, 2020
5,530 cfs at Renton

SR 169
Cedar River Trail

Cavanaugh Pond

Previous location of Riverbend Lower Levee

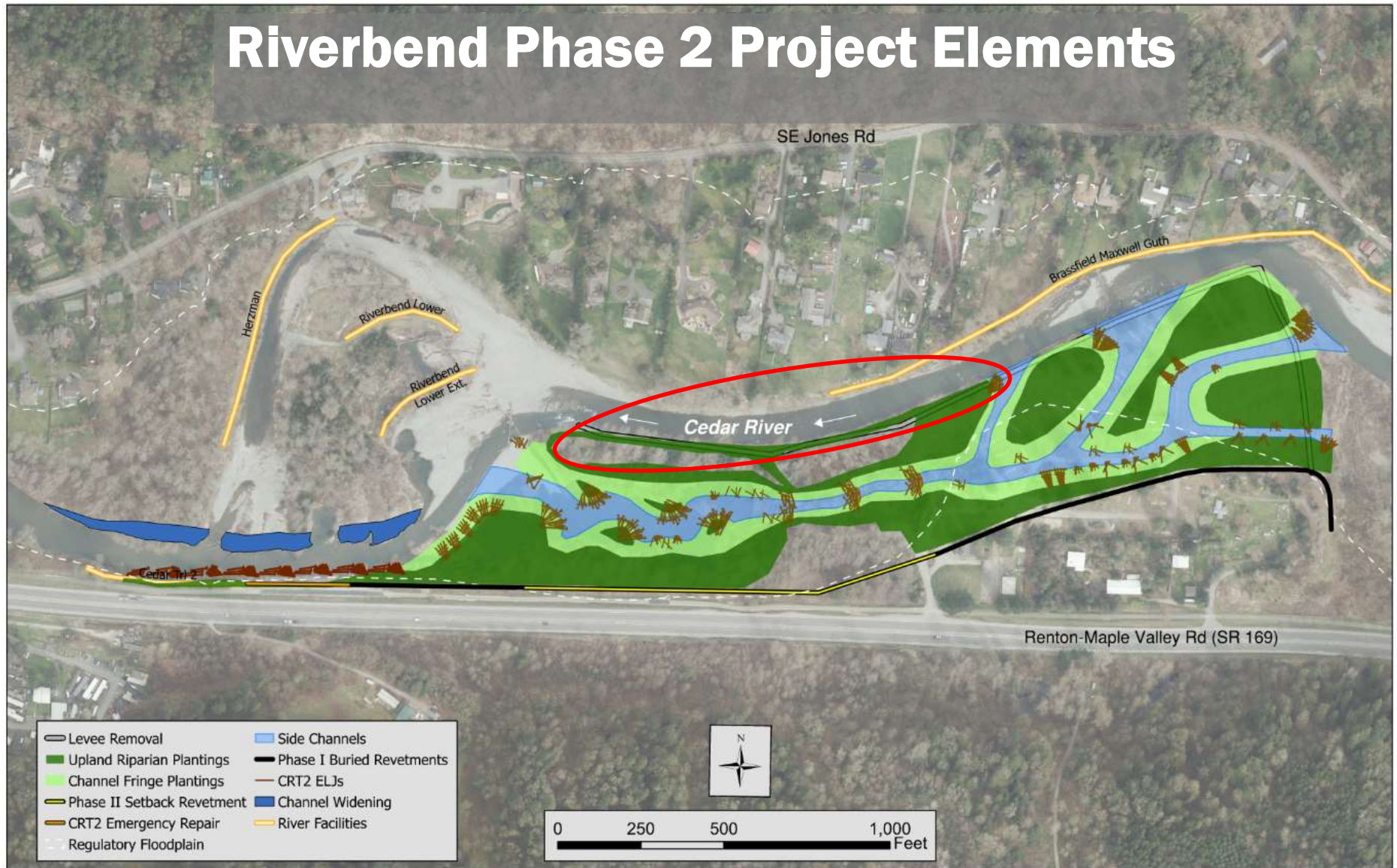
Cedar River

Avulsion Reset Reach Conditions

- Complex habitat with off channel connection.
- Head-cutting reset bed elevation for the entire reach.
- Undermined remaining levee.
- Destabilized Cedar River Trail/SR 169 embankment.
- **Required reassessment and redesign.**



Riverbend Phase 2 Project Elements



Riverbend Phase 2 Project Elements



Flow Deflectors/Toe Protection Extension

- Protect toe of steep bank of Cedar River Trail/SR 169.
- Engineered log jams to redirect flow and reduce scour.
- Include bumper logs and strategic orientation of rootwads.
- Implement Using flood protection funding



Riverbend Phase 2 Project Schedule

- Phase 2 Final Design and Permitting: Underway, complete by Nov 2021
- Procurement Start: December 2021
- Construction Start: Spring 2022*
- Planting: Fall 2022 or 2023
- Monitoring and Maintenance: 10 years post-construction

**2 construction seasons possible*

Contact Information

Jon Hansen, Project Manager

jon.hansen@kingcounty.gov

206-477-4706

Project webpage:

kingcounty.gov/Riverbend



King County

Questions?

