

CEDAR RIVER STEWARDSHIP IN ACTION

PROTECT YOUR RIVER FOR ALL WHO NEED IT





KNOTWEED: what is it & where did it come from?



2007: Landowner CONCERN about knotweed on the river



Cedar River at Dorre Don Natural Area
Before treatment 2008



Cedar River at Dorre Don Natural Area
After treatment 2009

2010: Cedar River Stewardship in Action (SiA) partnership is formed



- CONTROL knotweed



- IMPROVE water quality



- RESTORE river habitat

Partners & Coordinating Entities

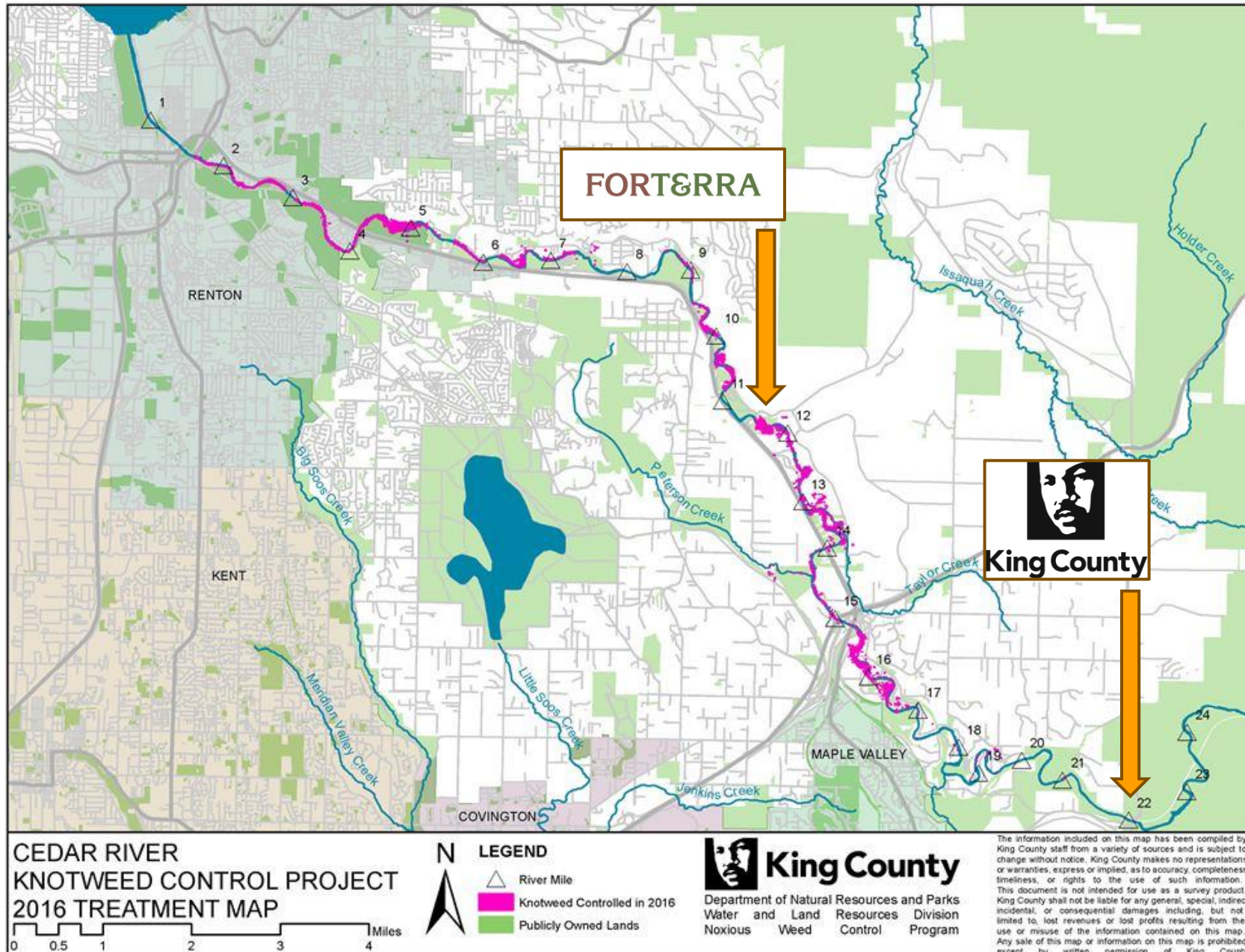


FORT&RRA



Project Areas

- Forterra project:
Cedar Grove Road
to Lake Washington
- KCNWCP project:
Landsburg Bridge to
Cedar Grove Road



A group of people, mostly wearing dark blue or black clothing and rubber boots, are walking away from the camera along a dirt path covered in fallen leaves. They are surrounded by dense green vegetation, including tall trees and thick bushes. The scene is outdoors, likely in a forest or park. A semi-transparent white box with green text is overlaid on the right side of the image.

2013: Regulation of Knotweed on the Cedar

Cedar River SiA: Knotweed Control

- Knotweed footprint reduced by **90%**
- **1,200+** landowners assisted with knotweed control yearly
- **1,500+** acres of floodplain surveyed yearly



Survey/treatment of Peterson Creek, a tributary of the Cedar River

Cedar River SiA: Native Plant Installation

- **60+** landowners signed up to receive native plants
- **100,000+** native trees and shrubs planted
- **100%** planting projects co-designed by landowners



Washington Conservation Corps member planting a western hemlock



NEW!

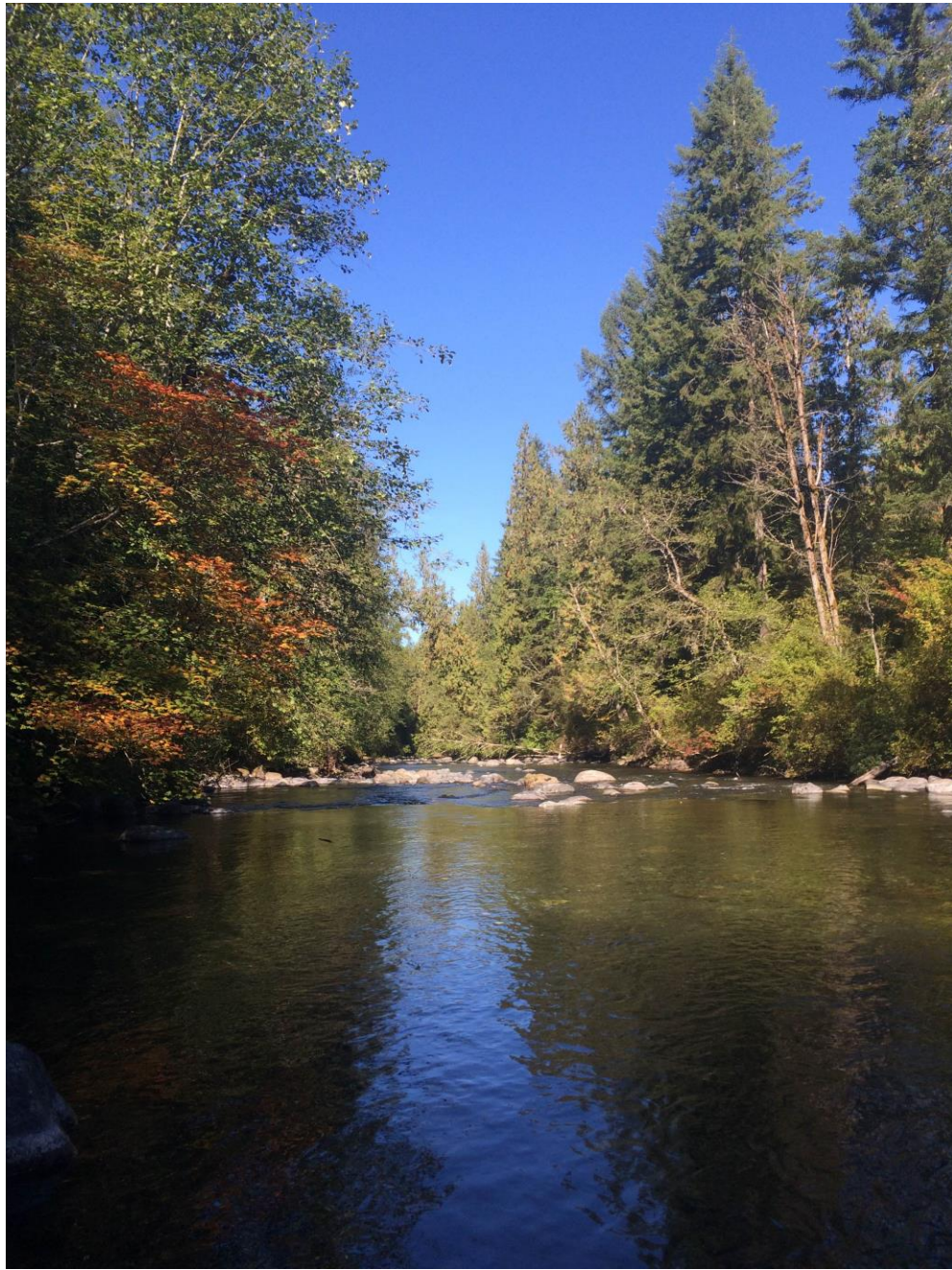
2018: ALL of
the Cedar is in
Restoration!!



• Knotweed treated in 2018

There is still work to be done...





Thank you for your stewardship!

