

An aerial photograph of a river bend. A large, light-colored gravel bar is situated in the middle of the river, creating a narrow channel. The riverbanks are lined with dense, mostly bare trees, suggesting a late autumn or winter setting. In the upper left, several houses are visible, partially obscured by trees. A paved road runs along the bottom right edge of the frame. The overall scene depicts a natural river environment undergoing restoration.

# Riverbend Levee Setback and Floodplain Restoration

*Project Update for Cedar River Council*

*February 28, 2023*



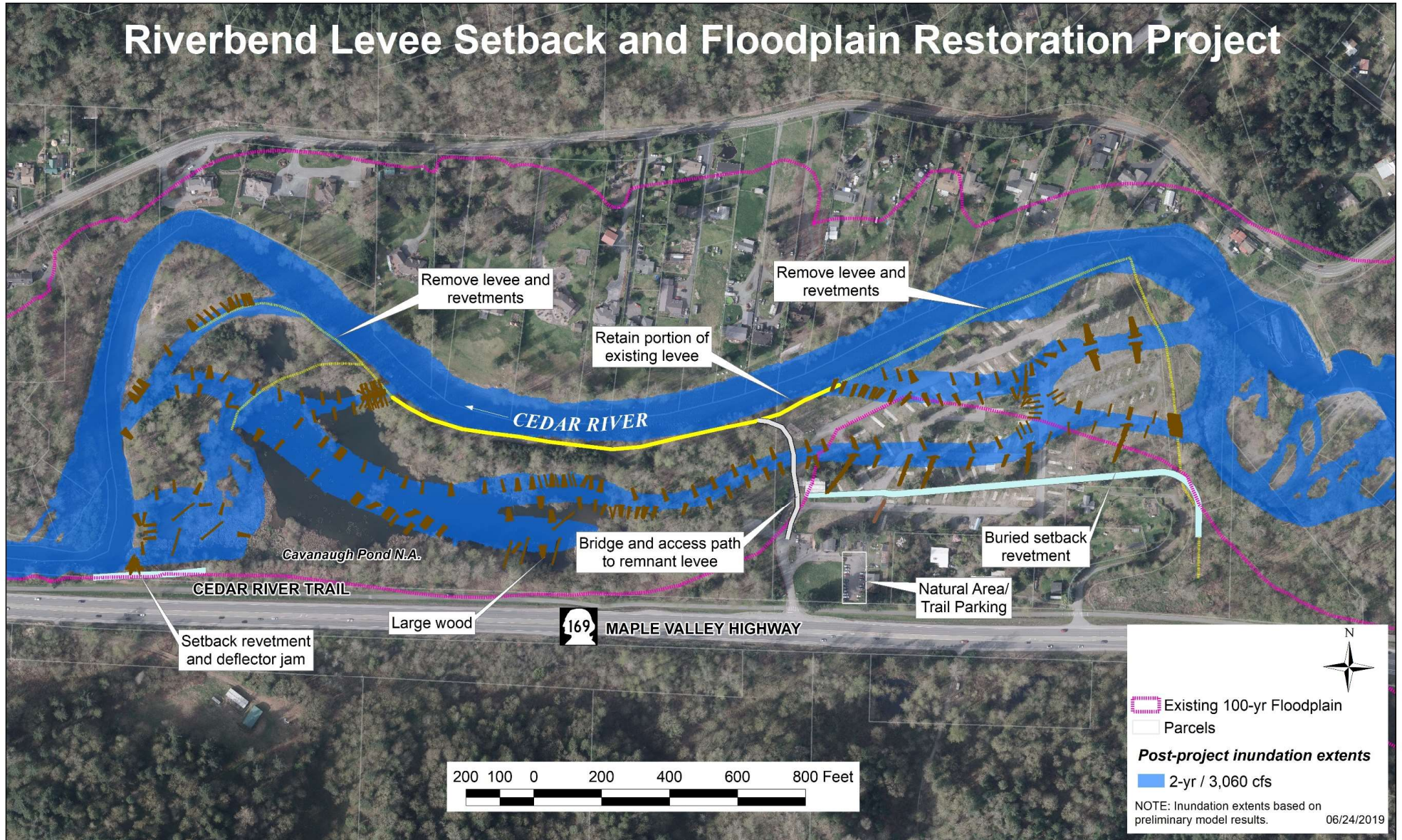


# Site and Reach Overview

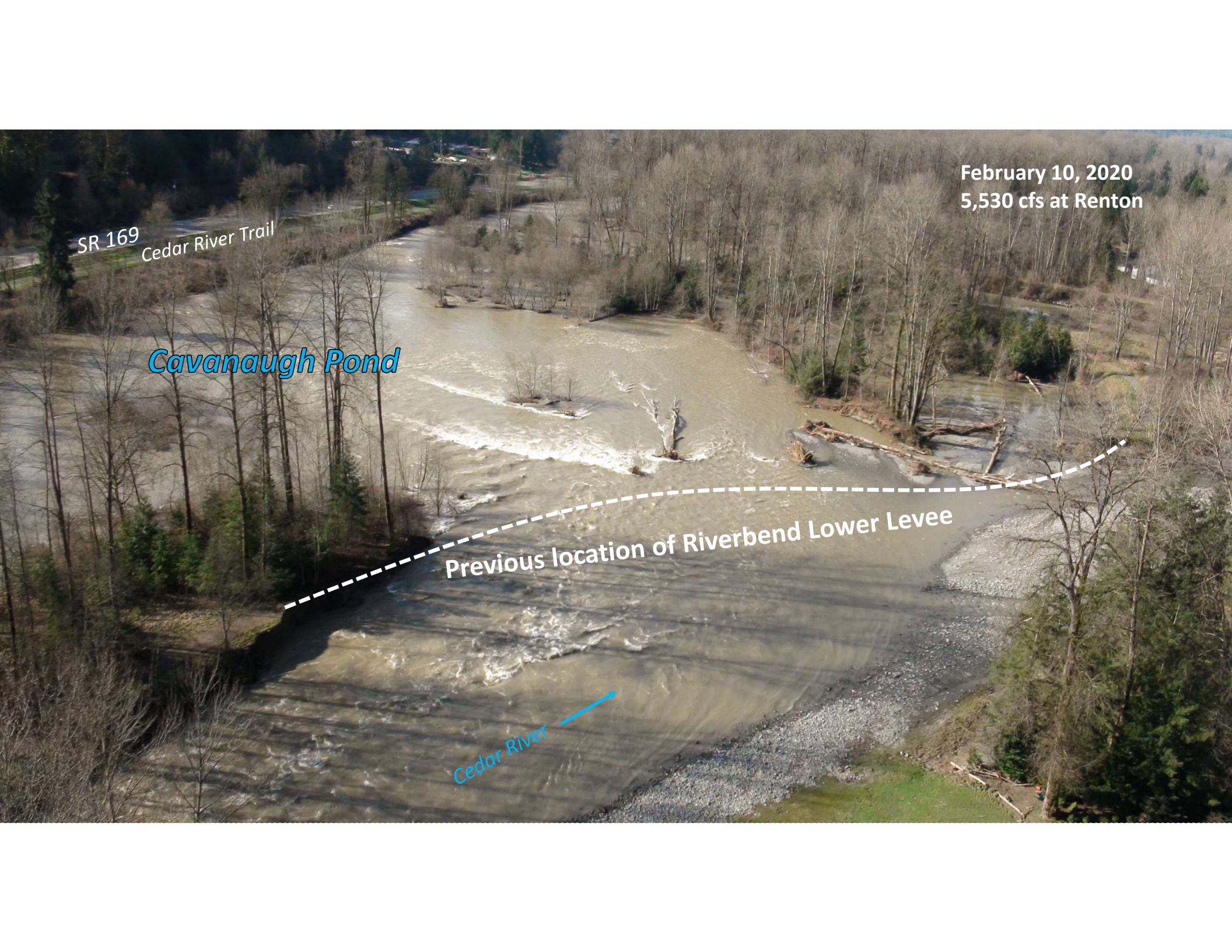




# Riverbend Levee Setback and Floodplain Restoration Project







February 10, 2020  
5,530 cfs at Renton

SR 169  
Cedar River Trail

*Cavanaugh Pond*

Previous location of Riverbend Lower Levee

*Cedar River* →



**Cavanaugh Pond - 1965**



**Cavanaugh Pond - 2020**





# Nov 1990 – Revetment/Levee Damage





# November 1990 – Revetment/Levee Damage





# Avulsion Reset Reach Conditions

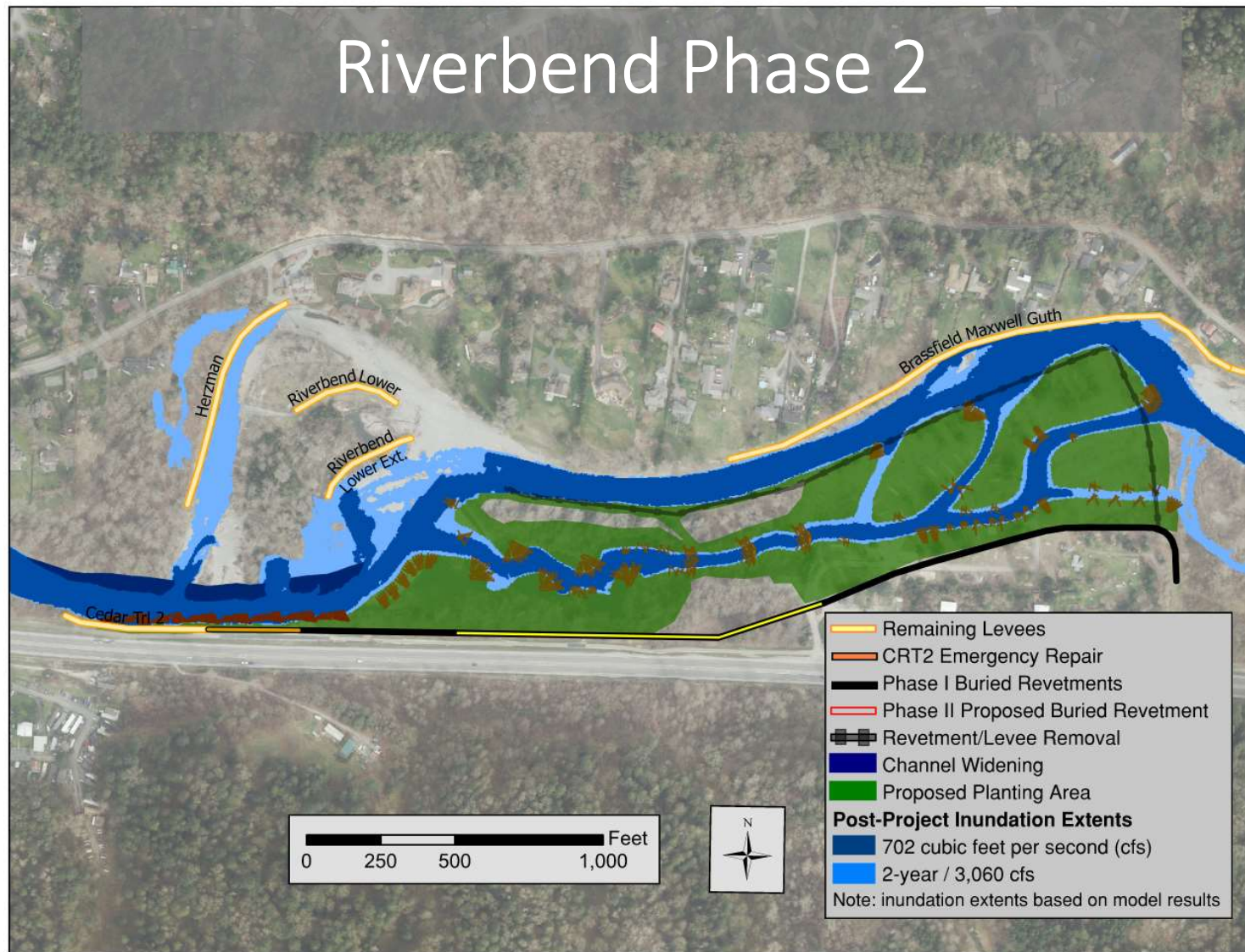
---

- Complex habitat with off channel connection
- Significant gravel deposition AND Headcutting
- Reset thalweg elevation of entire reach
- Undermined remaining levee
- **Required Reassessment and Redesign**





# Riverbend Phase 2





# Riverbend Pre- and Post Construction

**May 2022**

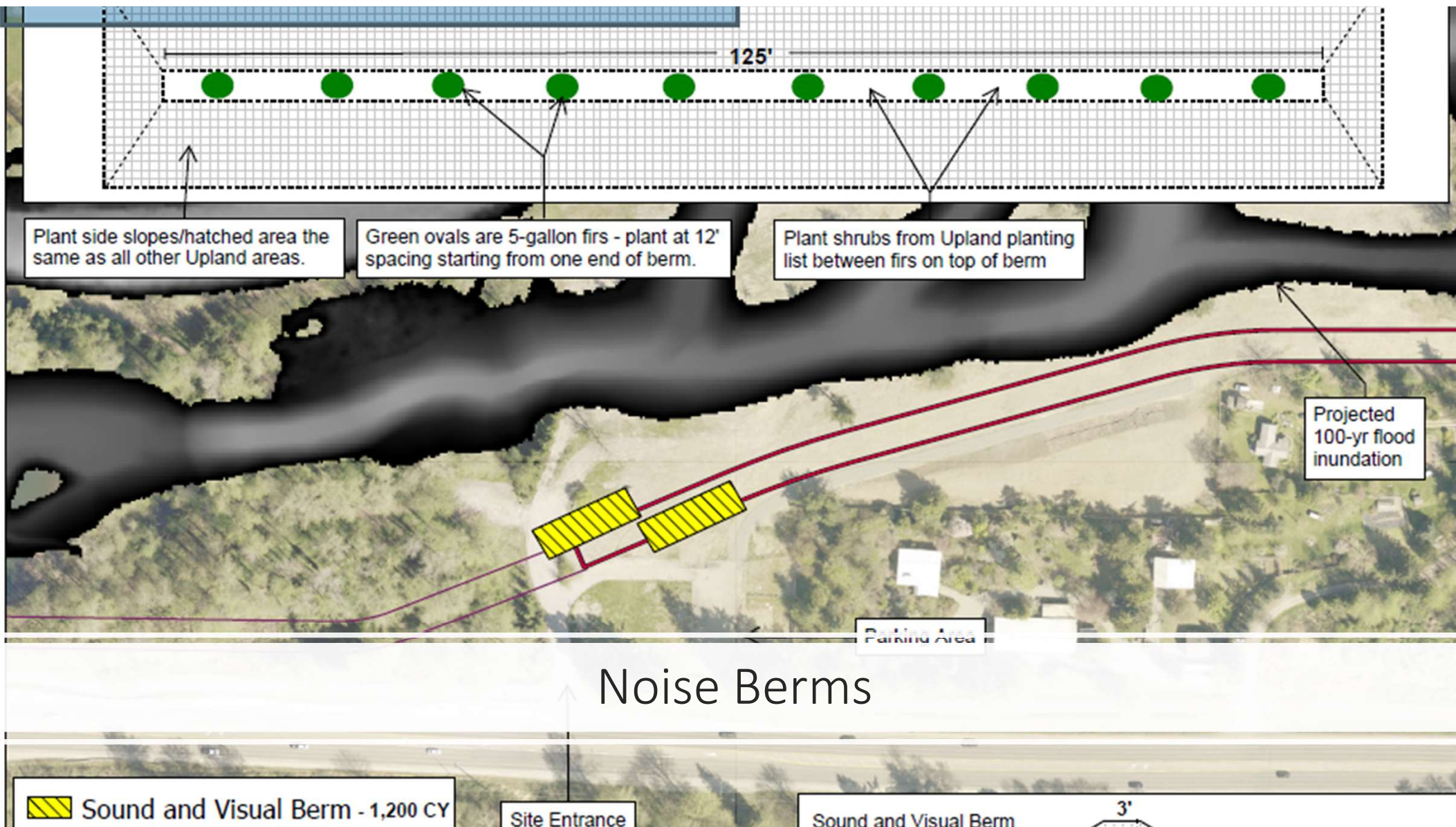
**January 2023**





Drone Footage Feb 2023







# Still work to Do

- Finish Work – Gates and site security and minor slope repair
- Supplemental Planting
- Noise Concerns
  - WSDOT Inquiries
  - Consultant Support
- Right Bank Work with Herzman Camp Freeman



Questions?



# Flooding - 2009



Neighborhood Flooding  
January 8, 2009  
7870 cfs @ Landsburg