

GENERAL NOTES:

1. NOT USED.
2. SEE SPECIFICATION FOR BLOCK WALL PATTERN.
3. NOT USED.
4. SEE DETAILS ON SHEET DD1.
5. SEE AL SHEETS FOR FENCE LOCATIONS.
6. SEE FINISHED GRADE CONTOURS ON AL SHEETS. SLOPE IN A SMOOTH TRANSITION BETWEEN PARKING LOT AND TRAIL.
7. SEE PLANT LIST ON BR SHEETS.

CONSTRUCTION NOTES:

- 1 HMA CL. 3/8" PG 64-22.
- 2 CRUSHED SURFACING TOP COURSE.
- 3 CRUSHED SURFACING BASE COURSE.
- 4 RETAINING WALL, SEE AL PLANS FOR TYPES AND LOCATIONS. SEE WP SHEETS FOR WALL PROFILES. SEE SHEET WD1 FOR DETAILS.
- 5 BLACK, COATED CHAIN LINK FENCE TYPE 6. SEE DETAILS IN APPENDIX B OF SPECIFICATIONS.
- 6 NOT USED
- 7 6" TOPSOIL TYPE A AND SEEDING, FERTILIZING AND MULCHING.
- 8 PEDESTRIAN RAILING PER COR STD DETAIL #321.
- 9 EXISTING BALLAST BASE.
- 10 SELECT BORROW INCL. HAUL.
- 11 SPLIT RAIL FENCE, SEE DETAILS ON SHEET MD3.
- 12 SLOTTED CURB, SEE DETAILS ON SHEET MD2.
- 13 EXTRUDED CURB PER COR STD DETAIL #304A.
- 14 HMA CL. 1/2" PG 64-22.
- 15 NOT USED.
- 16 CEMENT CONCRETE PAVEMENT. USE SIDEWALK JOINTS PER COR DETAIL #303.
- 17 TYPE A CEMENT TRAFFIC CURB AND GUTTER PER COR STD DETAIL #304.
- 18 NOT USED.
- 19 WOOD RAIL FENCE, SEE DETAILS ON SHEET MD3.
- 20 SAWCUT, SEE SP SHEETS FOR SAWCUT LIMITS.
- 21 NOT USED.
- 22 PRECAST CONCRETE SLOPED MOUNTABLE CURB PER WSDOT STD PLAN F-10.62-00.

THIS DEVELOPMENT SHALL BE CONSTRUCTED IN ACCORDANCE WITH THE CITY OF REDMOND STANDARD SPECIFICATIONS AND DETAILS, 2011 EDITION

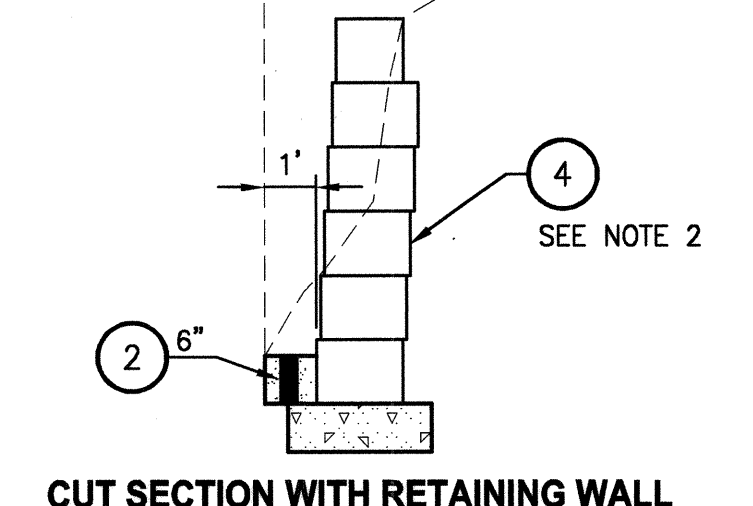
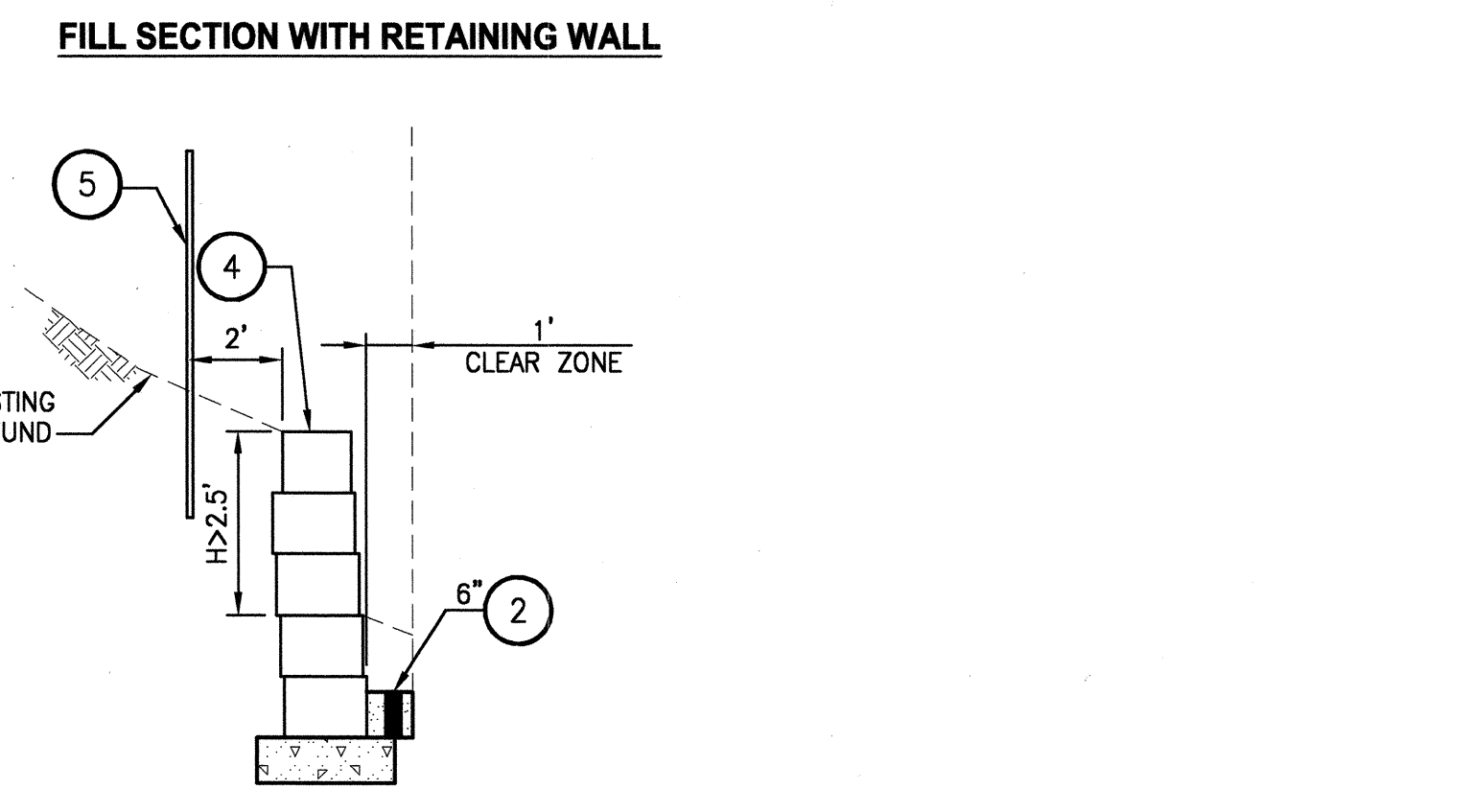
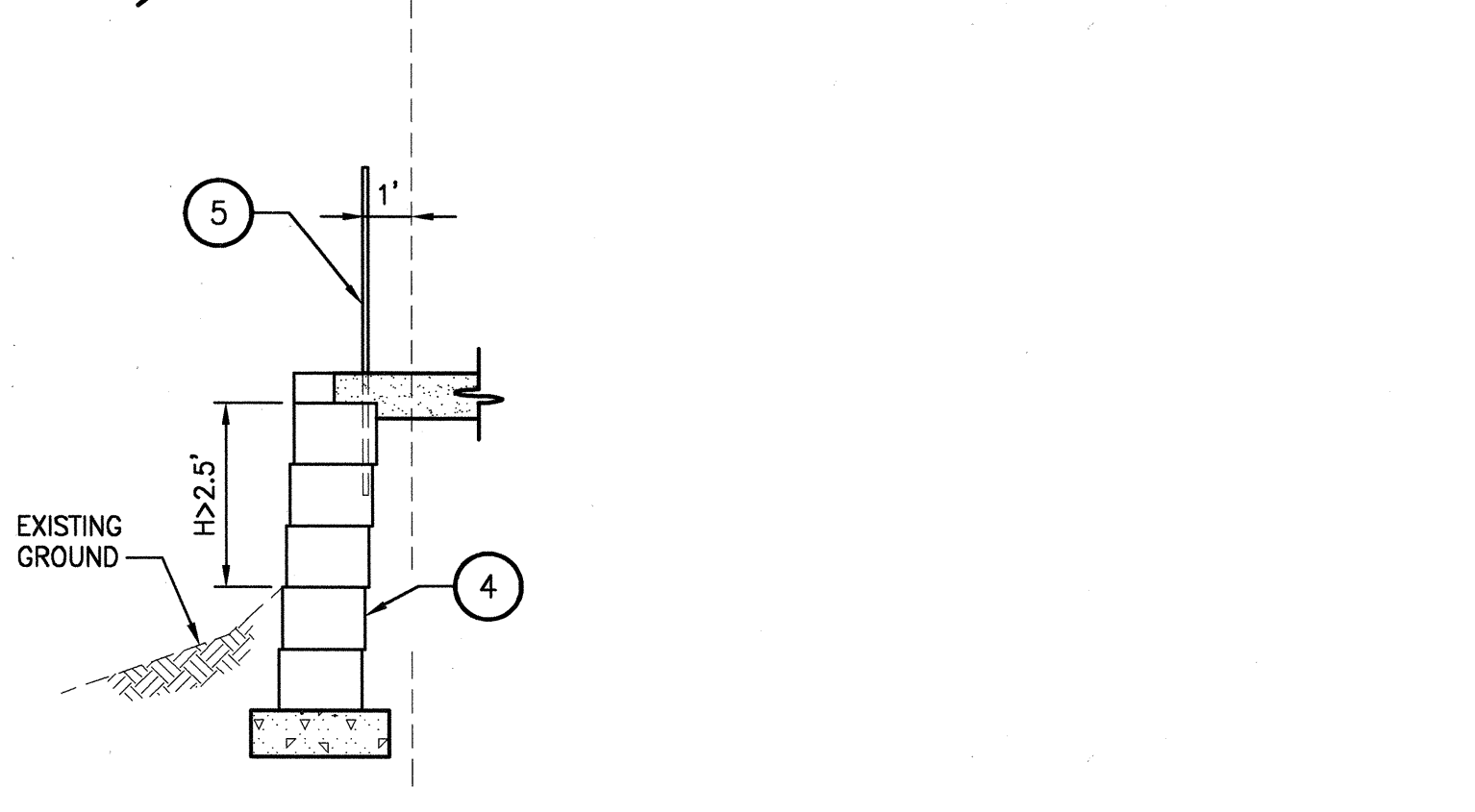
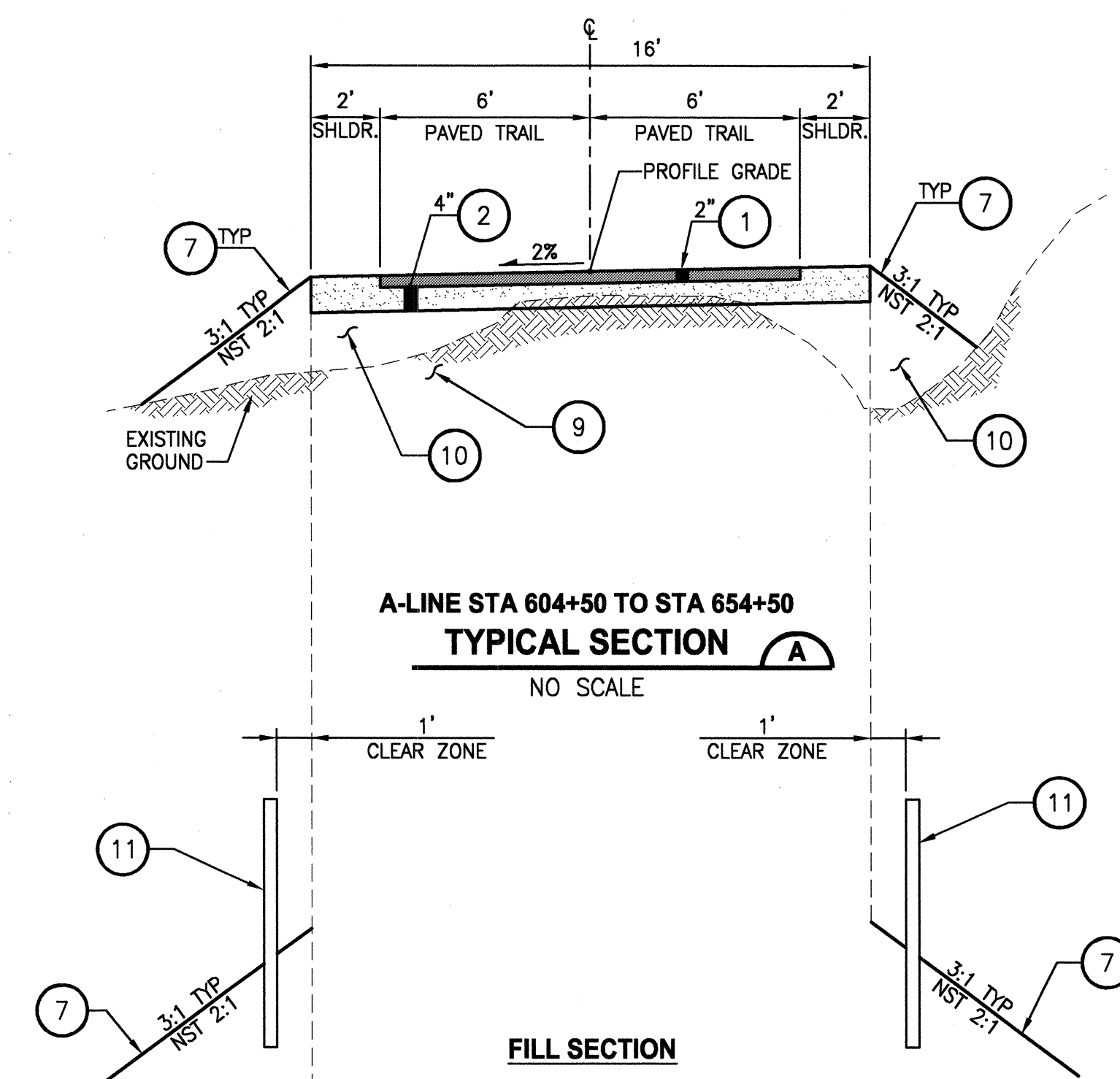
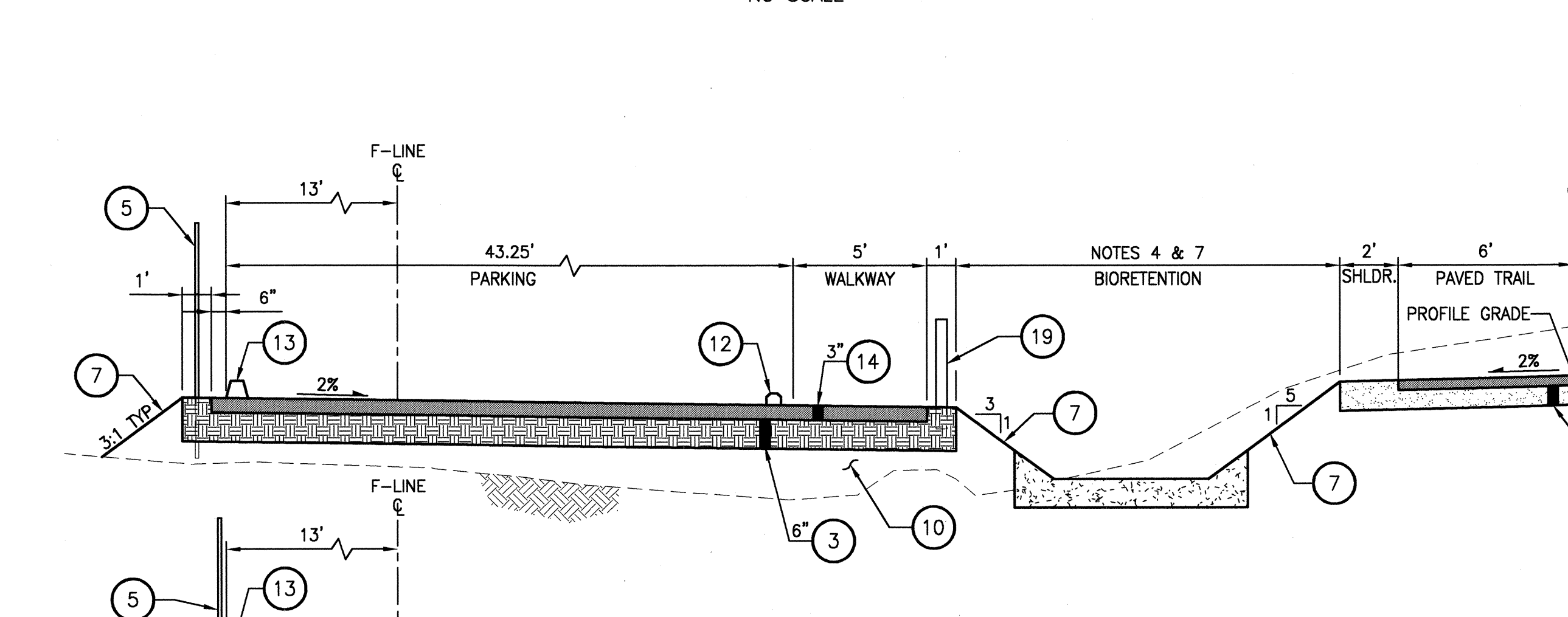
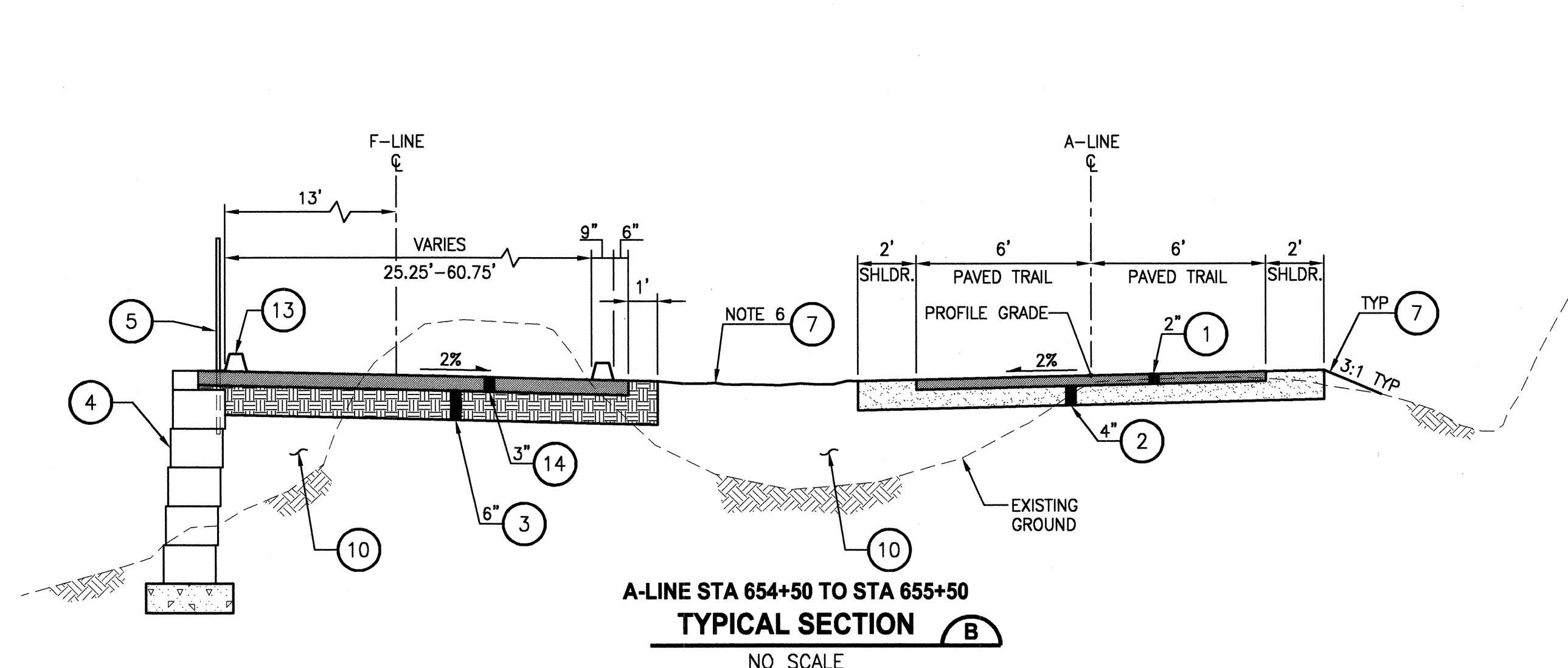
APPROVED FOR CONSTRUCTION	PLAN CHK ENGR	N/A
<i>[Signature]</i>	STORM	01-12-11
FOR: WILLIAM J. CAMPBELL	UTILITY	1-13-11
DIRECTOR OF PUBLIC WORKS	FIRE DEPT	NA
CITY OF REDMOND	TRANS / ENR	1-12-11
DATE: 1-18-2011	PLANNING DEPT	1-18-11

THIS APPROVAL IS FOR THE DESIGN CONCEPT ONLY. THESE PLANS APPEAR TO BE IN CONFORMANCE WITH THE CITY OF REDMOND DESIGN STANDARDS FOR CONSTRUCTION. THIS APPROVAL SHALL NOT BE CONSTRUED AS AUTHORIZING CONSTRUCTION NOT IN ACCORDANCE WITH APPLICABLE CITY STANDARDS. THE CITY RESERVES THE RIGHT TO REQUIRE REVISIONS TO THE APPROVED PLANS TO ASSURE CONFORMANCE WITH CITY OF REDMOND DESIGN STANDARDS FOR CONSTRUCTION AT ANY TIME THAT IT IS DISCOVERED THAT THE PROPOSED CONSTRUCTION DOES NOT OTHERWISE MEET THE APPLICABLE CONSTRUCTION STANDARDS. THE OWNER IS REQUIRED TO PROVIDE DESIGN AND PLANS IN ACCORDANCE WITH APPLICABLE CITY STANDARDS AND ASSURES THAT CONSTRUCTION IS ACCOMPLISHED IN ACCORDANCE WITH THOSE STANDARDS. THE OWNER AND/OR DESIGN ENGINEER AND/OR DEVELOPER MAY BE REQUIRED TO MAKE NECESSARY APPROVED FIELD REVISIONS TO CORRECT ANY ERRORS OR OMISSIONS FOUND ON THE APPROVED PLAN.

11-0170

DRAWING NO. 21 OF 72

CS1



DATE: Dec 16, 2010 - 3:36pm PLOTTED BY: pargobut IMAGES: XREFS: XBL1521075P12T01-bk

REVISIONS	DATE	BY	DESIGNED
			Y. HO
			S. SIRE
			H. LONGFELLOW
			APPROVED

ONE INCH AT FULL SCALE, IF NOT, SCALE ACCORDINGLY
FILE NAME: BL1521075P12T01CS-01
JOB No. 554-1521-075
DATE: DECEMBER 2010



Parametrix
ENGINEERING . PLANNING . ENVIRONMENTAL SCIENCES
411 108TH AVENUE N.E., SUITE 1800
BELLEVUE, WASHINGTON 98004
T: 425 450 6200 F: 425 450 6303
www.parametrix.com

PROJECT NAME
EAST LAKE SAMMAMISH
MASTER PLAN TRAIL, REDMOND SEGMENT
187TH AVENUE NE TO NE 70TH STREET

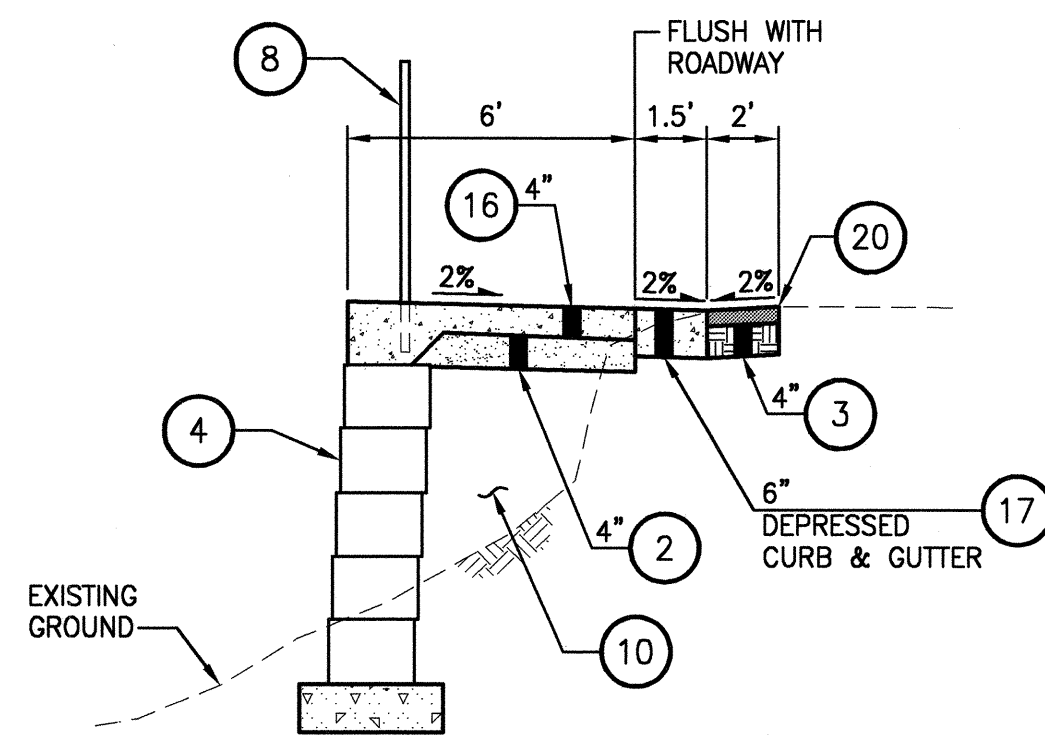
TYPICAL CROSS SECTIONS

GENERAL NOTES:

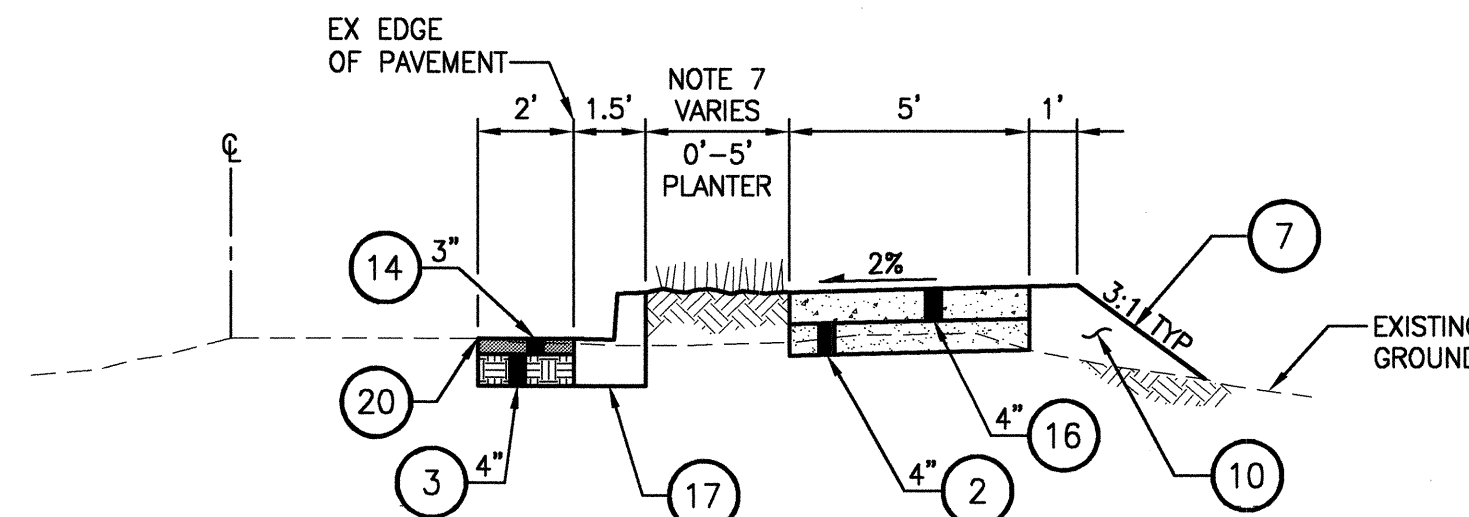
1. SCARIFY TOP OF EXISTING CRUSHED ROCK SURFACE AND PLACE CSTC ABOVE EXISTING. SPREAD EXCAVATED MATERIALS TO THE SIDE SLOPES. USE AS FILL MATERIALS WHERE SUITABLE, AS DIRECTED BY THE PROJECT REPRESENTATIVE.
2. FOR CROSS SLOPES, SEE CROSS SLOPE SCHEDULE ON SHEET CS2.
3. REMOVE EXISTING CONCRETE SIDEWALK.
4. SEE DETAILS ON SHEET DD1.
5. SEE ALL SHEETS FOR FENCE LOCATIONS AND TYPES.
6. SEE FINISHED GRADE CONTOURS ON ALL SHEETS. SLOPE IN A SMOOTH TRANSITION BETWEEN PARKING LOT AND TRAIL.
7. SEE PLANT LIST ON BR SHEETS.

CONSTRUCTION NOTES:

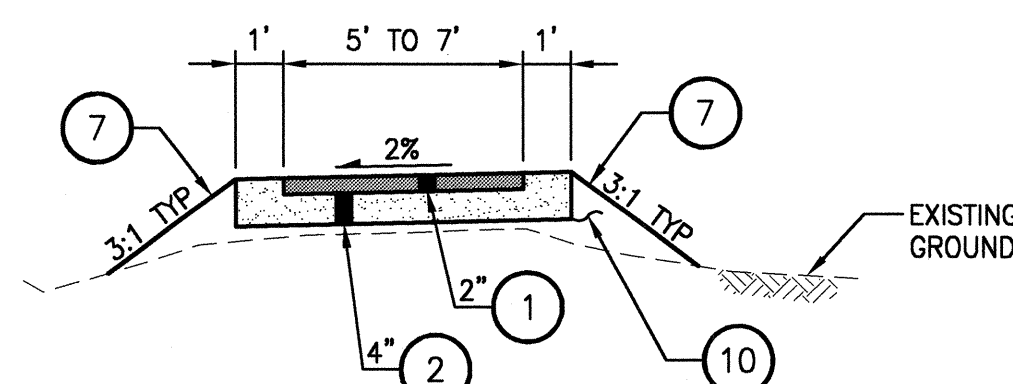
- 1 HMA CL. 3/8" PG 64-22.
- 2 CRUSHED SURFACING TOP COURSE.
- 3 CRUSHED SURFACING BASE COURSE.
- 4 MODULAR BLOCK WALL, SEE ALL PLANS FOR LOCATIONS. SEE WP SHEETS FOR WALL PROFILES. SEE SHEET WD1 FOR DETAILS.
- 5 BLACK, COATED CHAIN LINK FENCE TYPE 6. SEE DETAILS IN APPENDIX B OF SPECIFICATIONS.
- 6 NOT USED.
- 7 6" TOPSOIL TYPE A AND SEEDING & FERTILIZING.
- 8 PEDESTRIAN RAILING PER COR STD DETAIL #321.
- 9 EXISTING BALLAST BASE.
- 10 SELECT BORROW INCL. HAUL.
- 11 SPLIT RAIL FENCE, SEE DETAILS ON SHEET MD3.
- 12 SLOTTED CURB, SEE DETAILS ON SHEET MD2.
- 13 EXTRUDED CURB PER COR STD DETAIL #304A.
- 14 HMA CL. 1/2" PG 64-22.
- 15 NOT USED.
- 16 CEMENT CONCRETE PAVEMENT. USE SIDEWALK JOINTS PER COR DETAIL #303.
- 17 TYPE A CEMENT TRAFFIC CURB AND GUTTER PER COR STD DETAIL #304.
- 18 NOT USED.
- 19 WOOD RAIL FENCE, SEE DETAILS ON SHEET MD3.
- 20 SAWCUT, SEE SP SHEETS FOR SAWCUT LIMITS.
- 21 NOT USED.
- 22 PRECAST CONCRETE SLOPED MOUNTABLE CURB PER WSDOT STD PLAN F-10.62-00.



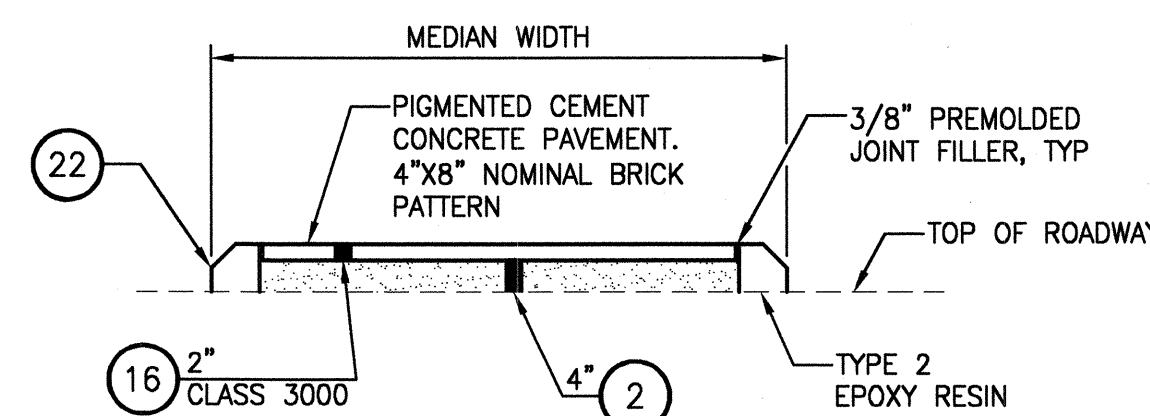
**SIDEWALK NEAR 187TH AVE NE
B-LINE STA 2+00 TO STA 3+54.60
SIDEWALK SECTION 1**
NO SCALE



**SIDEWALK ALONG NE 70TH ST
E-LINE STA 1+19.57 TO STA 2+53
SIDEWALK SECTION 2**
NO SCALE



**PATH NEAR 187TH AVE NE & IN PARKING LOT
C-LINE STA 1+00 TO STA 1+67.06 & INSIDE TUNNEL
D1-LINE
D2-LINE
D3-LINE
D4-LINE
PEDESTRIAN PATH 3**
NO SCALE



**NE 65TH ST MEDIAN
DETAIL 4**
NO SCALE

THIS DEVELOPMENT SHALL BE CONSTRUCTED IN ACCORDANCE WITH THE CITY OF REDMOND STANDARD SPECIFICATIONS AND DETAILS, 2011 EDITION

APPROVED FOR CONSTRUCTION	PLAN CHK ENGR	N/A
<i>[Signature]</i>	STORM	01-12-11
FOR: WILLIAM L. CARROLL	UTILITY	01-12-11
DIRECTOR OF PUBLIC WORKS	FIRE DEPT	N/A
CITY OF REDMOND	TRANS / ENGR	01-12-11
DATE: 1-18-2011	PLANNING DEPT	01-12-11

THIS APPROVAL IS FOR THE DESIGN CONCEPT ONLY. THESE PLANS APPEAR TO BE IN CONFORMANCE WITH THE CITY OF REDMOND DESIGN STANDARDS FOR CONSTRUCTION. THIS APPROVAL SHALL NOT BE CONSTRUED AS AUTHORIZING CONSTRUCTION NOT IN ACCORDANCE WITH APPLICABLE CITY STANDARDS. THE CITY RESERVES THE RIGHT TO REQUIRE REVISIONS TO THE APPROVED PLANS TO ASSURE CONFORMANCE WITH CITY OF REDMOND DESIGN STANDARDS FOR CONSTRUCTION AT ANY TIME THAT IT IS DISCOVERED THAT THE PROPOSED CONSTRUCTION DOES NOT OTHERWISE MEET THE APPLICABLE CONSTRUCTION STANDARDS. THE OWNER IS REQUIRED TO PROVIDE DESIGN AND PLANS IN ACCORDANCE WITH APPLICABLE CITY STANDARDS AND ASSURES THAT CONSTRUCTION IS ACCOMPLISHED IN ACCORDANCE WITH THOSE STANDARDS. THE OWNER AND/OR DESIGN ENGINEER AND/OR DEVELOPER MAY BE REQUIRED TO MAKE NECESSARY APPROVED FIELD REVISIONS TO CORRECT ANY ERRORS OR OMISSIONS FOUND ON THE APPROVED PLAN.

DATE: Dec 16, 2010 - 3:36pm PLOTTED BY: jurgabut IMAGES: XREFS: XBL1521075P12T01-tbtk

REVISIONS	DATE	BY	DESIGNED
			Y. HO
			S. SIRE
			H. LONGFELLOW
			APPROVED

ONE INCH AT FULL SCALE, IF NOT, SCALE ACCORDINGLY
FILE NAME: BL1521075P12T01CS-01
JOB NO: 554-1521-075
DATE: DECEMBER 2010



Parametrix
ENGINEERING . PLANNING . ENVIRONMENTAL SCIENCES
411 108TH AVENUE N.E., SUITE 1800
BELLEVUE, WASHINGTON 98004
T: 425-458-6200 F: 425-458-6363
www.parametrix.com

PROJECT NAME
**EAST LAKE SAMMAMISH
MASTER PLAN TRAIL, REDMOND SEGMENT**
187TH AVENUE NE TO NE 70TH STREET

**TYPICAL CROSS SECTIONS
AND SCHEDULE**

DRAWING NO.
22 OF 72
CS2

11-0171