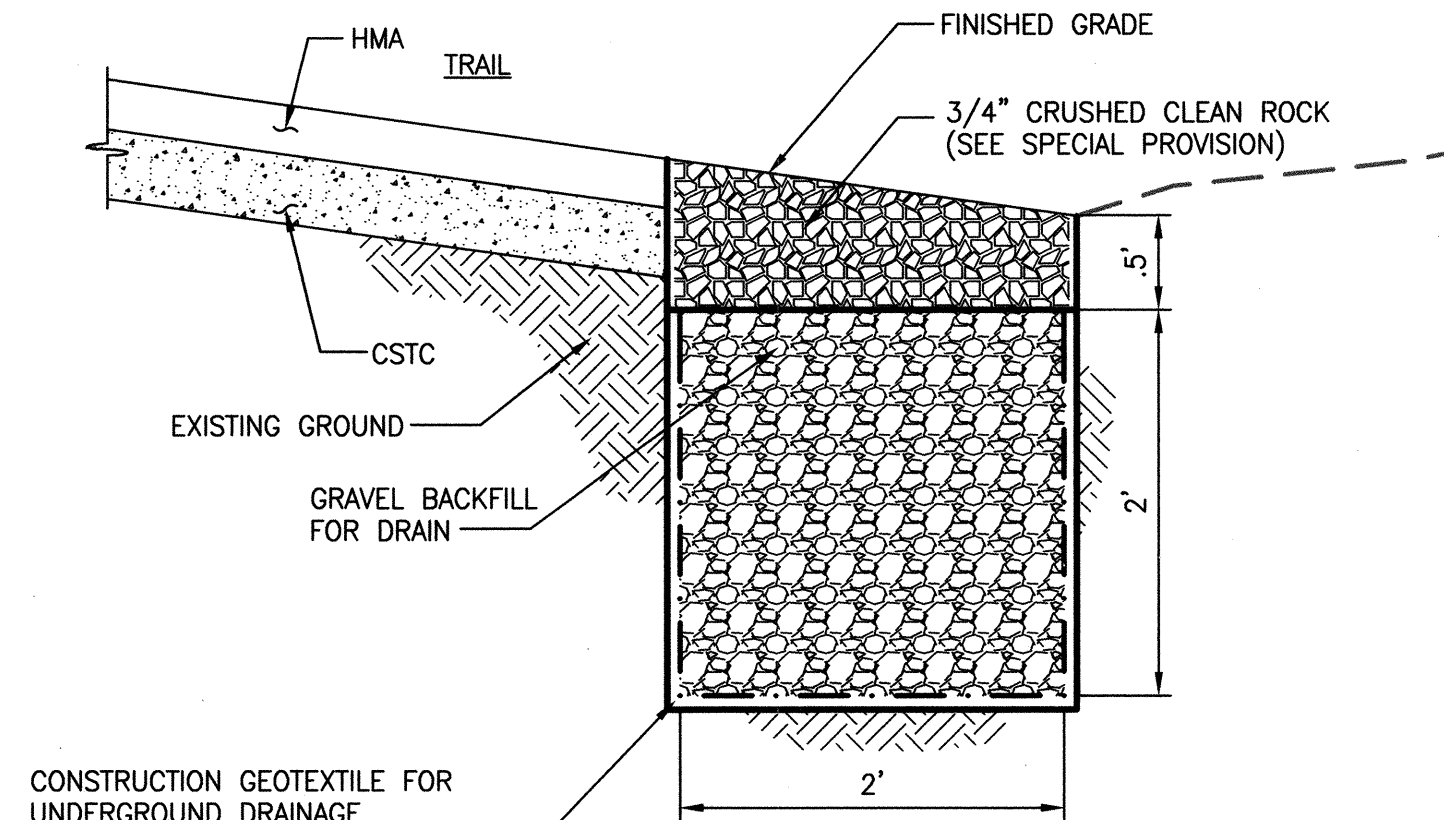


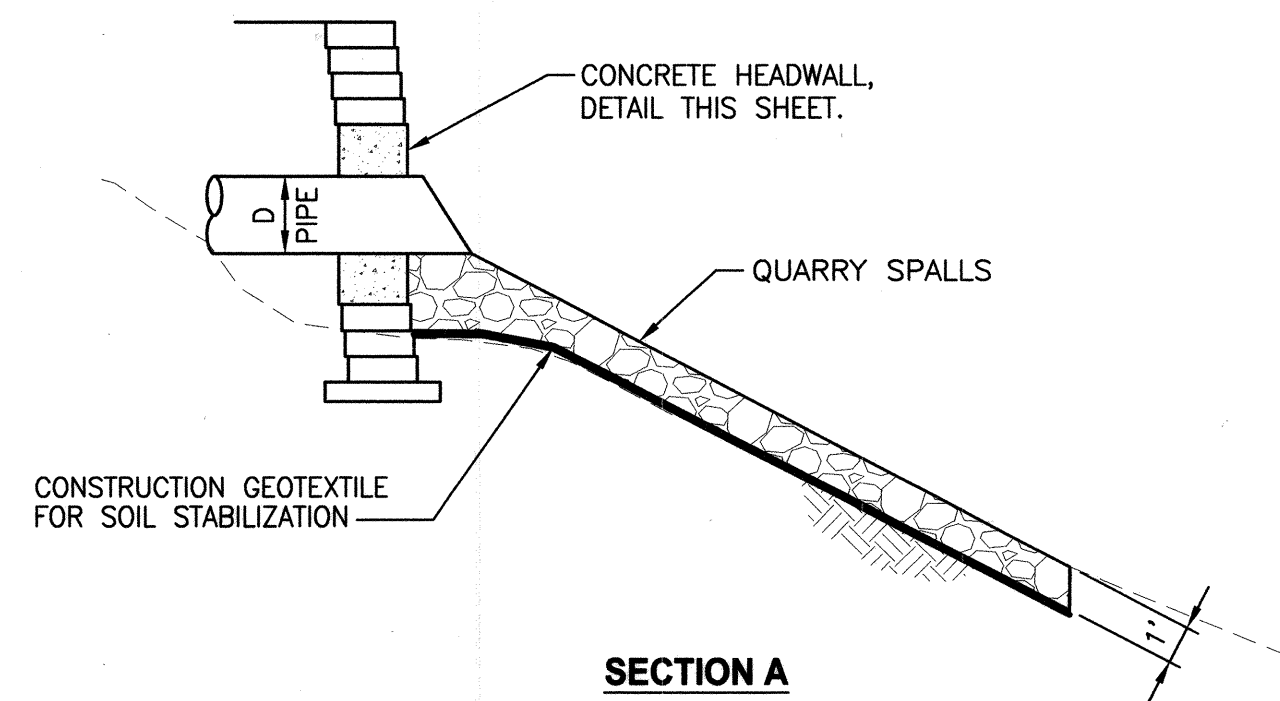
CELL #	LENGTH
1	192'
2	87'
3	137'
4	187'
5	205'

**BIORETENTION CELL  
TYPICAL SECTION**  
NO SCALE

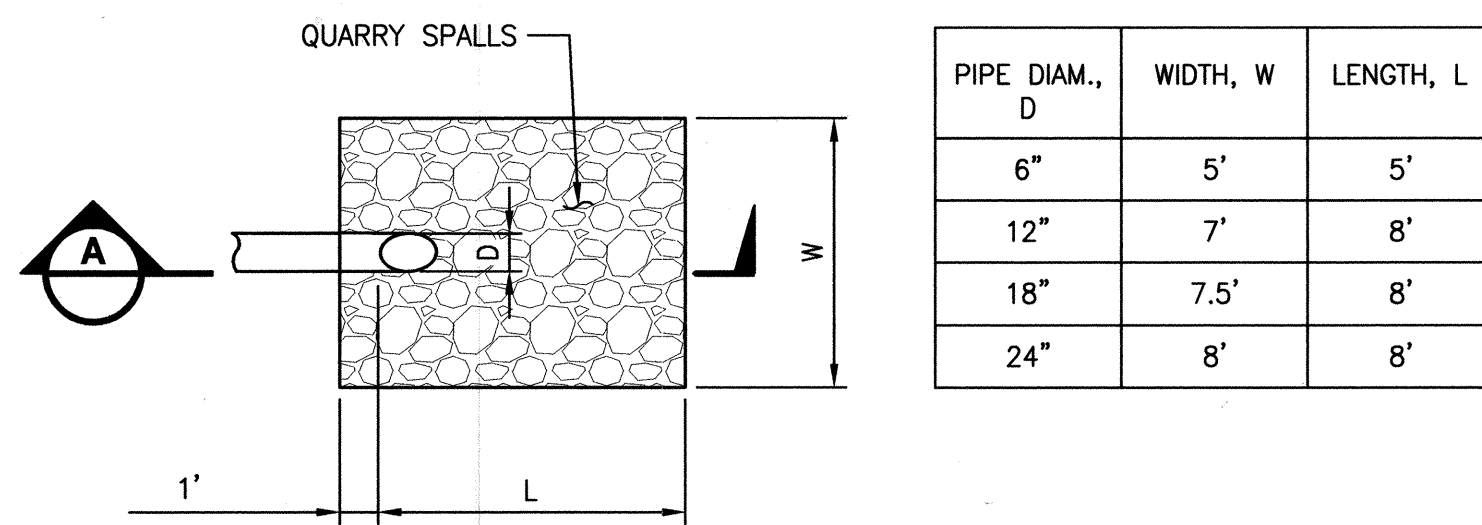
- NOTES:**
- SEE SHEETS BR1 AND BR2 FOR BIORETENTION PLANTING PLAN.
  - SEE SHEET CS1 FOR PARKING LOT AND TRAIL SECTIONS AND SLOPE INFORMATION.
  - SEE PLAN AND PROFILE SHEETS FOR SPOT ELEVATIONS AT BOTTOM OF CELLS.



**INFILTRATION TRENCH  
DETAIL**  
NO SCALE

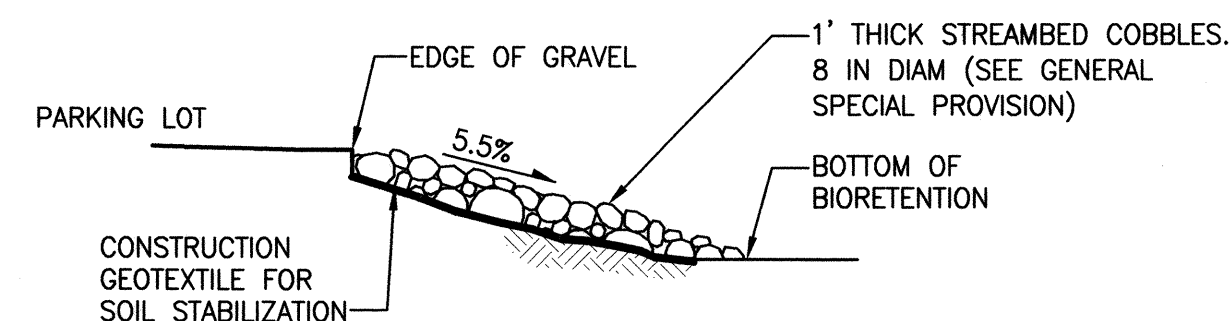


**SECTION A**

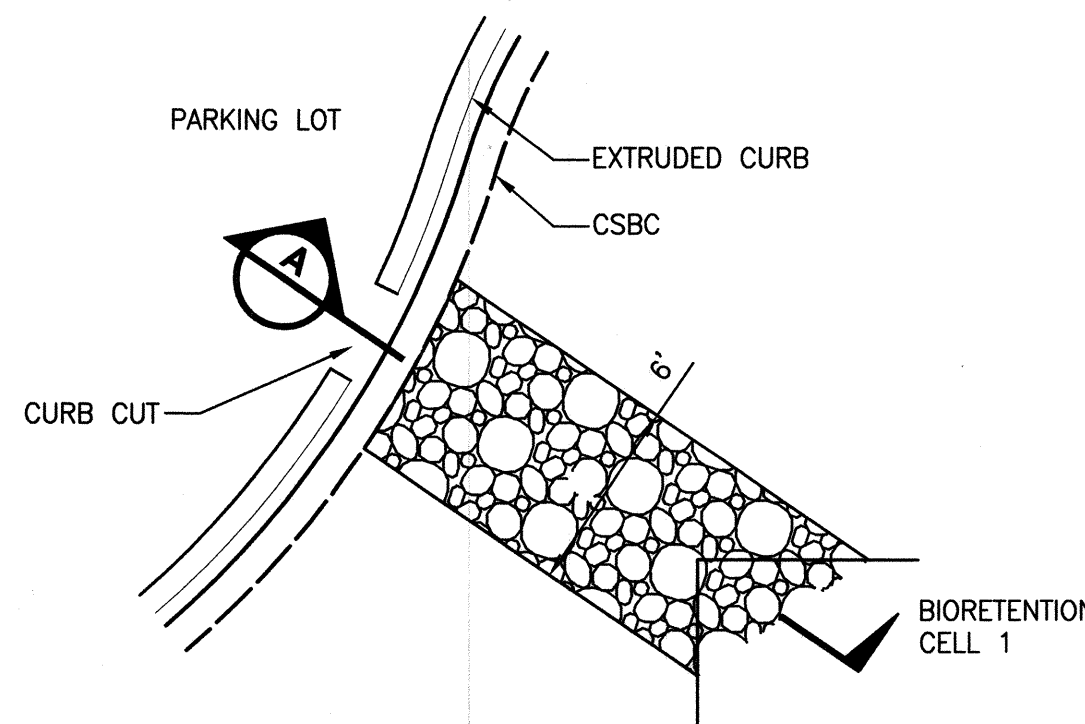


**QUARRY SPALL OUTFALL PROTECTION  
DETAIL**  
NO SCALE

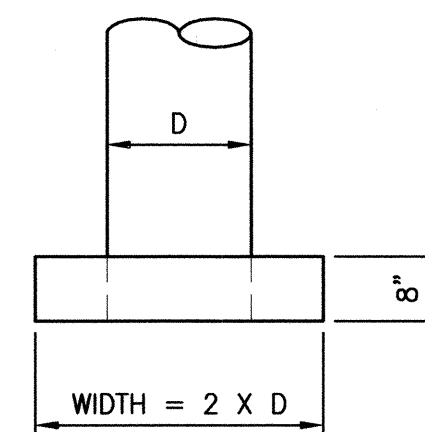
PIPE DIAM., D	WIDTH, W	LENGTH, L
6"	5'	5'
12"	7'	8'
18"	7.5'	8'
24"	8'	8'



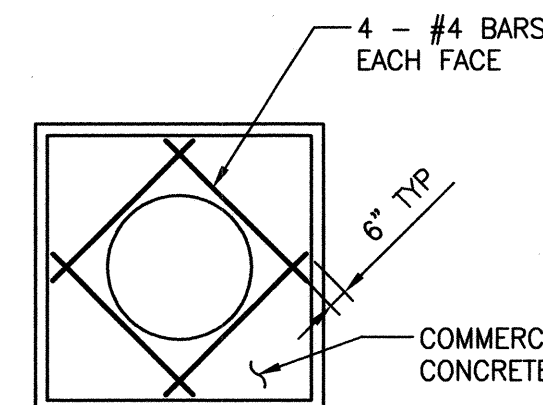
**SECTION A**



**STREAMBED COBBLES  
DETAIL**  
NO SCALE

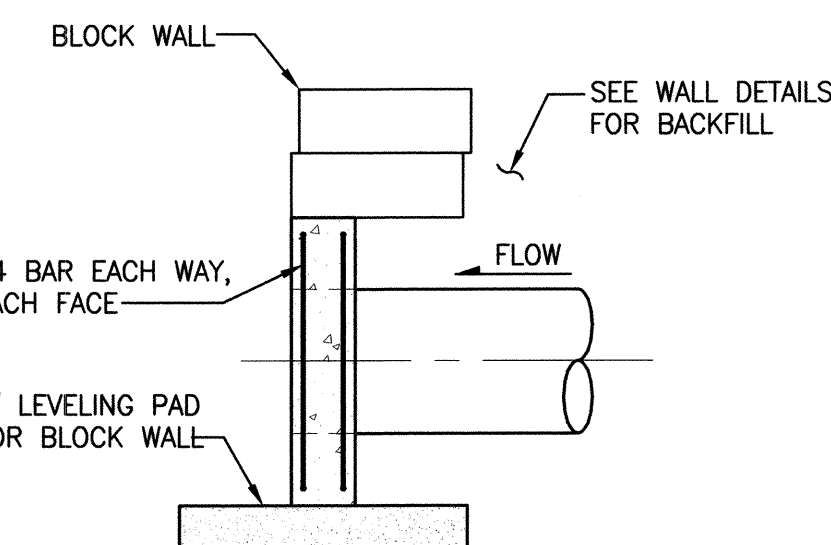


**PLAN**



**ELEVATION**

- NOTES:**
- REINFORCING STEEL SHALL HAVE 1 1/2" MIN. CLEAR COVER TO ALL CONCRETE SURFACES.
  - FOR BLOCK WALLS SEE WALL DETAIL SHEET.



**SECTION A**

**CONCRETE HEADWALL  
DETAIL**  
NO SCALE

THIS DEVELOPMENT SHALL BE CONSTRUCTED IN ACCORDANCE WITH THE CITY OF REDMOND STANDARD SPECIFICATIONS AND DETAILS, 2011 EDITION.

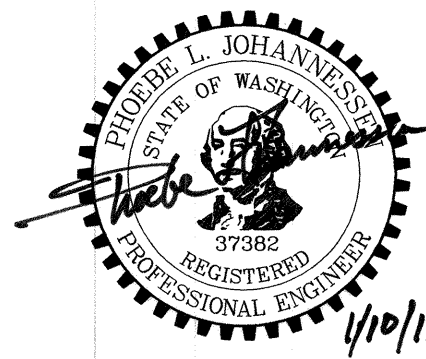
APPROVED FOR CONSTRUCTION	PLAN CHK ENGR	N/A
<i>William J. Campbell</i>	STORM	12-01-12-11
FOR: WILLIAM J. CAMPBELL	UTILITY	N/A
DIRECTOR OF PUBLIC WORKS	FIRE DEPT	N/A
CITY OF REDMOND	TRANS / ENGR	1-12-11
DATE: 1-18-2011	PLANNING DEPT	N/A

THIS APPROVAL IS FOR THE DESIGN CONCEPT ONLY. THESE PLANS APPEAR TO BE IN CONFORMANCE WITH THE CITY OF REDMOND DESIGN STANDARDS FOR CONSTRUCTION. THIS APPROVAL SHALL NOT BE CONSTRUED AS AUTHORIZING CONSTRUCTION NOT IN ACCORDANCE WITH APPLICABLE CITY STANDARDS. THE CITY RESERVES THE RIGHT TO REQUIRE REVISIONS TO THE APPROVED PLANS TO ASSURE CONFORMANCE WITH CITY OF REDMOND DESIGN STANDARDS FOR CONSTRUCTION AT ANY TIME THAT IT IS DISCOVERED THAT THE PROPOSED CONSTRUCTION DOES NOT OTHERWISE MEET THE APPLICABLE CONSTRUCTION STANDARDS. THE OWNER IS REQUIRED TO PROVIDE DESIGN AND PLANS IN ACCORDANCE WITH APPLICABLE CITY STANDARDS AND ASSURES THAT CONSTRUCTION IS ACCOMPLISHED IN ACCORDANCE WITH THOSE STANDARDS. THE OWNER AND/OR DESIGN ENGINEER AND/OR DEVELOPER MAY BE REQUIRED TO MAKE NECESSARY APPROVED FIELD REVISIONS TO CORRECT ANY ERRORS OR OMISSIONS FOUND ON THE APPROVED PLAN.

DATE: Jan 10, 2011 - 1:52pm PLOTTED BY: purgobut

REVISIONS	DATE	BY	DESIGNED
			P. JOHANNESSEN
			DRAWN S. SIRE
			CHECKED H. LONGFELLOW
			APPROVED

ONE INCH AT FULL SCALE, IF NOT, SCALE ACCORDINGLY  
FILE NAME: BL1521075P12T01DD1-3  
JOB No: 554-1521-075  
DATE: DECEMBER 2010



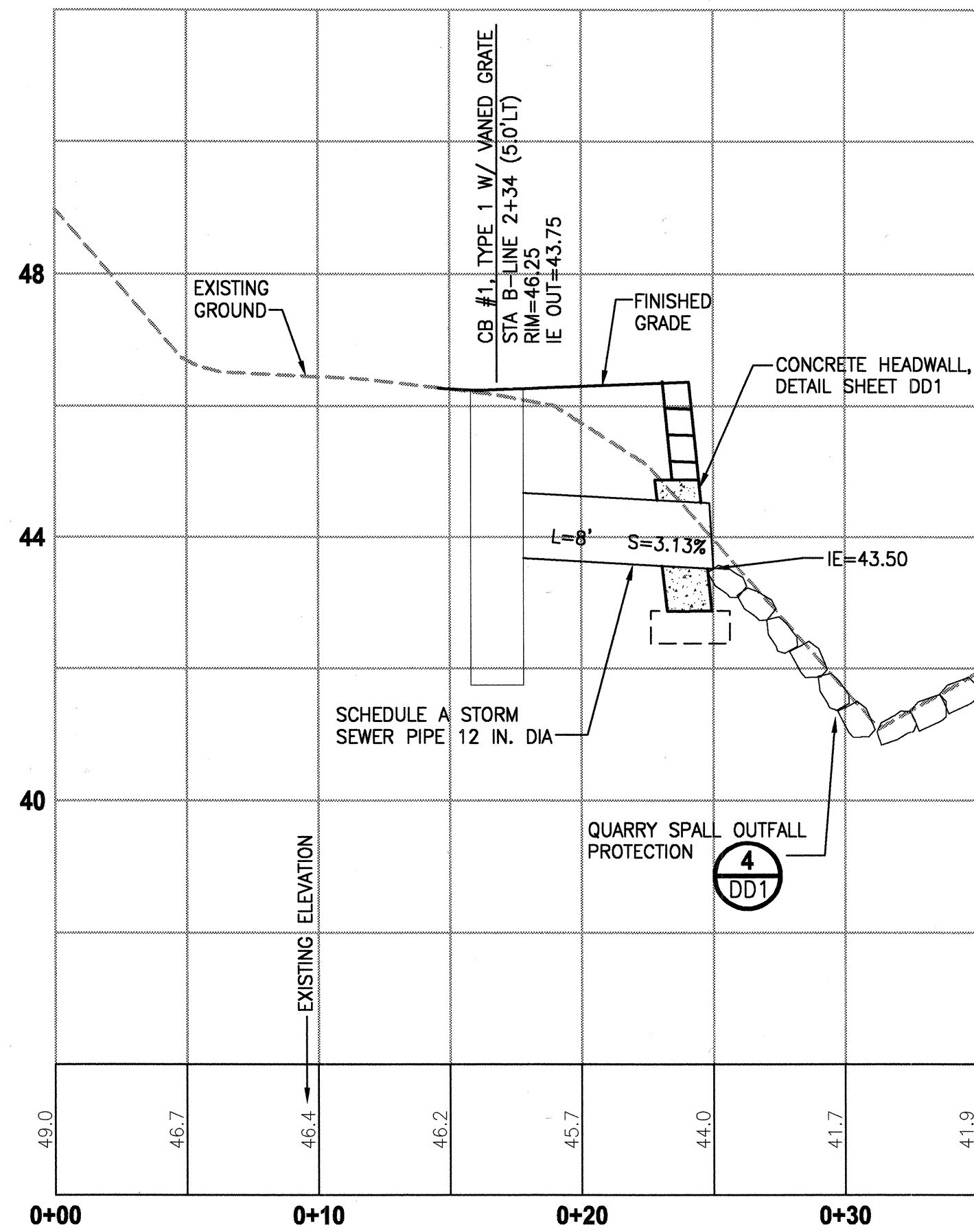
**Parametrix**  
ENGINEERING, PLANNING, ENVIRONMENTAL SCIENCES  
411 108TH AVENUE N.E., SUITE 1800  
BELLEVUE, WASHINGTON 98004  
T: 425.458.6200 F: 425.458.6363  
www.parametrix.com

PROJECT NAME  
**EAST LAKE SAMMAMISH  
MASTER PLAN TRAIL, REDMOND SEGMENT**  
187TH AVENUE NE TO NE 70TH STREET

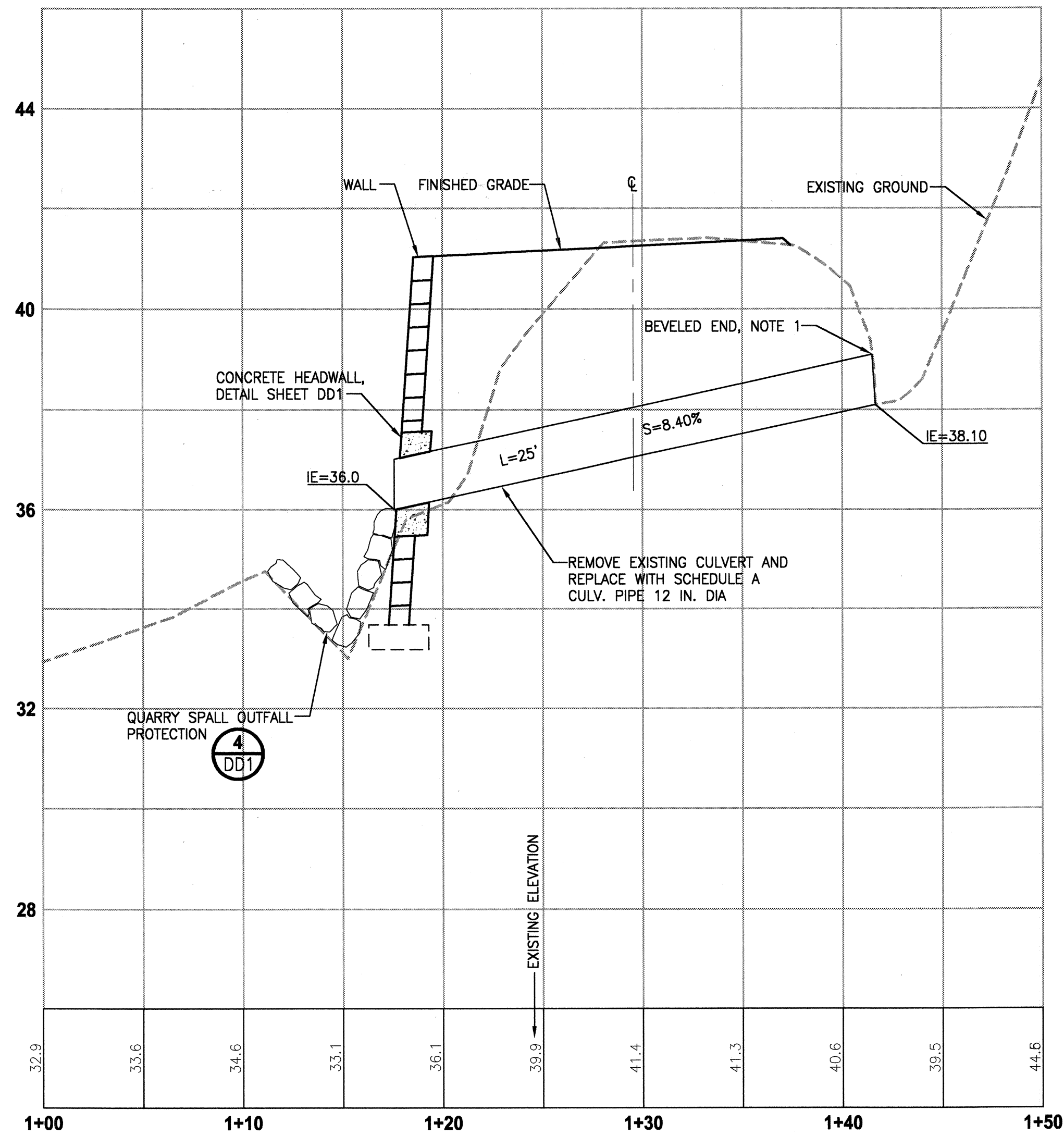
**DRAINAGE DETAILS**

DRAWING NO.  
43 OF 72  
**DD1**

DATE: Dec 17, 2010 - 2:31pm PLOTTED BY: purgobut IMAGES: XREF S: XBL1521075P12T01-DD1 | XBL1521075P12T01-DRAIN-PR



**B-LINE STA 2+34  
PIPE PROFILE**  
HORIZ: 1"=5'  
VERT: 1"=2'



**A-LINE STA 613+56  
CULVERT PROFILE**  
HORIZ: 1"=5'  
VERT: 1"=2'

**NOTES:**

1. BEVELED END SECTION PER WSDOT STD PLAN B-70.20-00.
2. TYPE 1 CATCH BASIN PER WSDOT STD PLAN B-5.20-00.
3. RECTANGULAR VANED GRATE PER WSDOT STD PLAN B-30.30-00.
4. STORM PIPE MUST MEET CITY OF REDMOND STANDARDS. NO STEEL STORM SEWER PIPE ALLOWED.

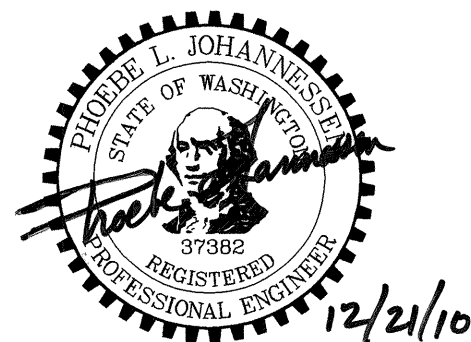
THIS DEVELOPMENT SHALL BE CONSTRUCTED IN ACCORDANCE WITH THE CITY OF REDMOND STANDARD SPECIFICATIONS AND DETAILS, 2011 EDITION

APPROVED FOR CONSTRUCTION  
  
 FOR: WILLIAM A. CAMPBELL  
 DIRECTOR OF PUBLIC WORKS  
 CITY OF REDMOND  
 DATE: 1-18-2011  
 PLAN CHK ENGR. N/A  
 STORM: BR 01-12-11  
 UTILITY: N/A  
 CITY OF REDMOND: N/A  
 FIRE DEPT: N/A  
 TRANS / ENGR: KWS 1-12-11  
 PLANNING DEPT: N/A

THIS APPROVAL IS FOR THE DESIGN CONCEPT ONLY. THESE PLANS APPEAR TO BE IN CONFORMANCE WITH THE CITY OF REDMOND DESIGN STANDARDS FOR CONSTRUCTION. THIS APPROVAL SHALL NOT BE CONSTRUED AS AUTHORIZING CONSTRUCTION NOT IN ACCORDANCE WITH APPLICABLE CITY STANDARDS. THE CITY RESERVES THE RIGHT TO REQUIRE REVISIONS TO THE APPROVED PLANS TO ASSURE CONFORMANCE WITH CITY OF REDMOND DESIGN STANDARDS FOR CONSTRUCTION AT ANY TIME THAT IT IS DISCOVERED THAT THE PROPOSED CONSTRUCTION DOES NOT OTHERWISE MEET THE APPLICABLE CONSTRUCTION STANDARDS. THE OWNER IS REQUIRED TO PROVIDE DESIGN AND PLANS IN ACCORDANCE WITH APPLICABLE CITY STANDARDS AND ASSURES THAT CONSTRUCTION IS ACCOMPLISHED IN ACCORDANCE WITH THOSE STANDARDS. THE OWNER AND/OR DESIGN ENGINEER AND/OR DEVELOPER MAY BE REQUIRED TO MAKE NECESSARY APPROVED FIELD REVISIONS TO CORRECT ANY ERRORS OR OMISSIONS FOUND ON THE APPROVED PLAN.

REVISIONS	DATE	BY	DESIGNED
			P. JOHANNESSEN
			DRAWN S. SIRE
			CHECKED H. LONGFELLOW
			APPROVED

ONE INCH AT FULL SCALE, IF NOT, SCALE ACCORDINGLY  
 FILE NAME: BL1521075P12T01DD1-3  
 JOB No: 54-1521-075  
 DATE: DECEMBER 2010



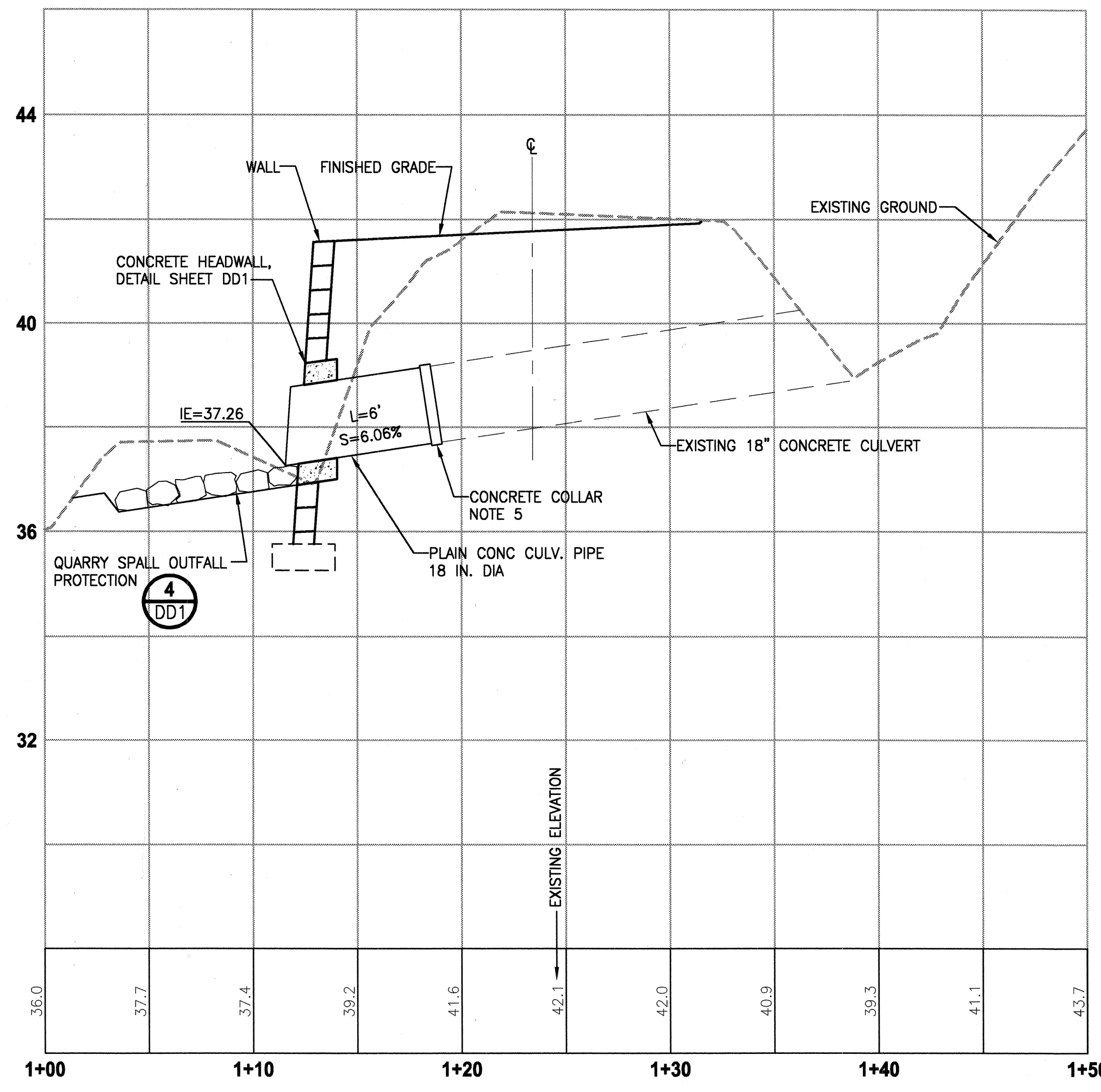
**Parametrix**  
 ENGINEERING . PLANNING . ENVIRONMENTAL SCIENCES  
 411 108TH AVENUE N.E., SUITE 1800  
 BELLEVUE, WASHINGTON 98004  
 T: 425-458-6200 F: 425-458-6363  
 www.parametrix.com

PROJECT NAME  
**EAST LAKE SAMMAMISH  
 MASTER PLAN TRAIL, REDMOND SEGMENT**  
 187TH AVENUE NE TO NE 70TH STREET

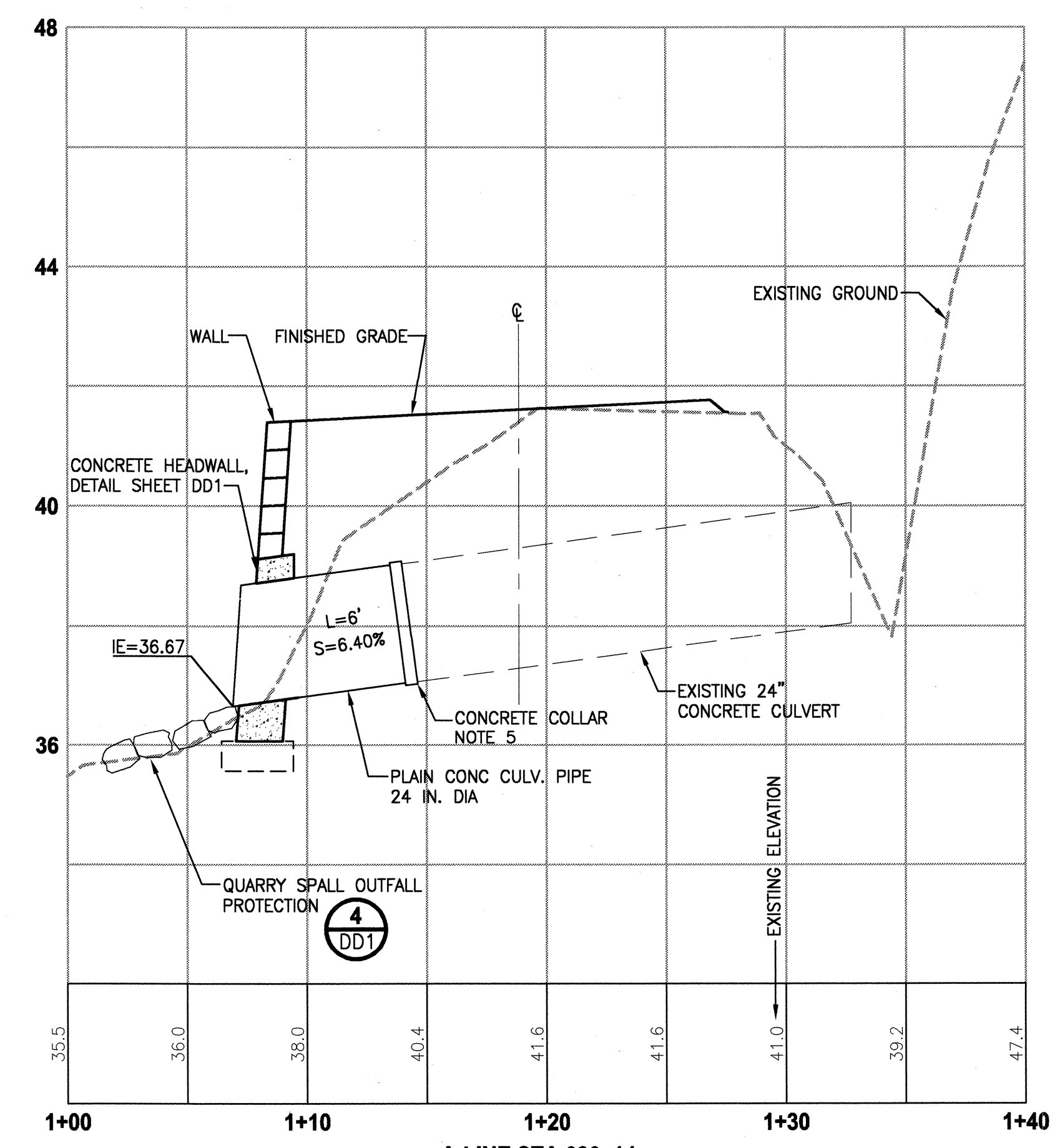
**DRAINAGE DETAILS**

11-0193  
 DRAWING NO. 44 OF 72  
**DD2**

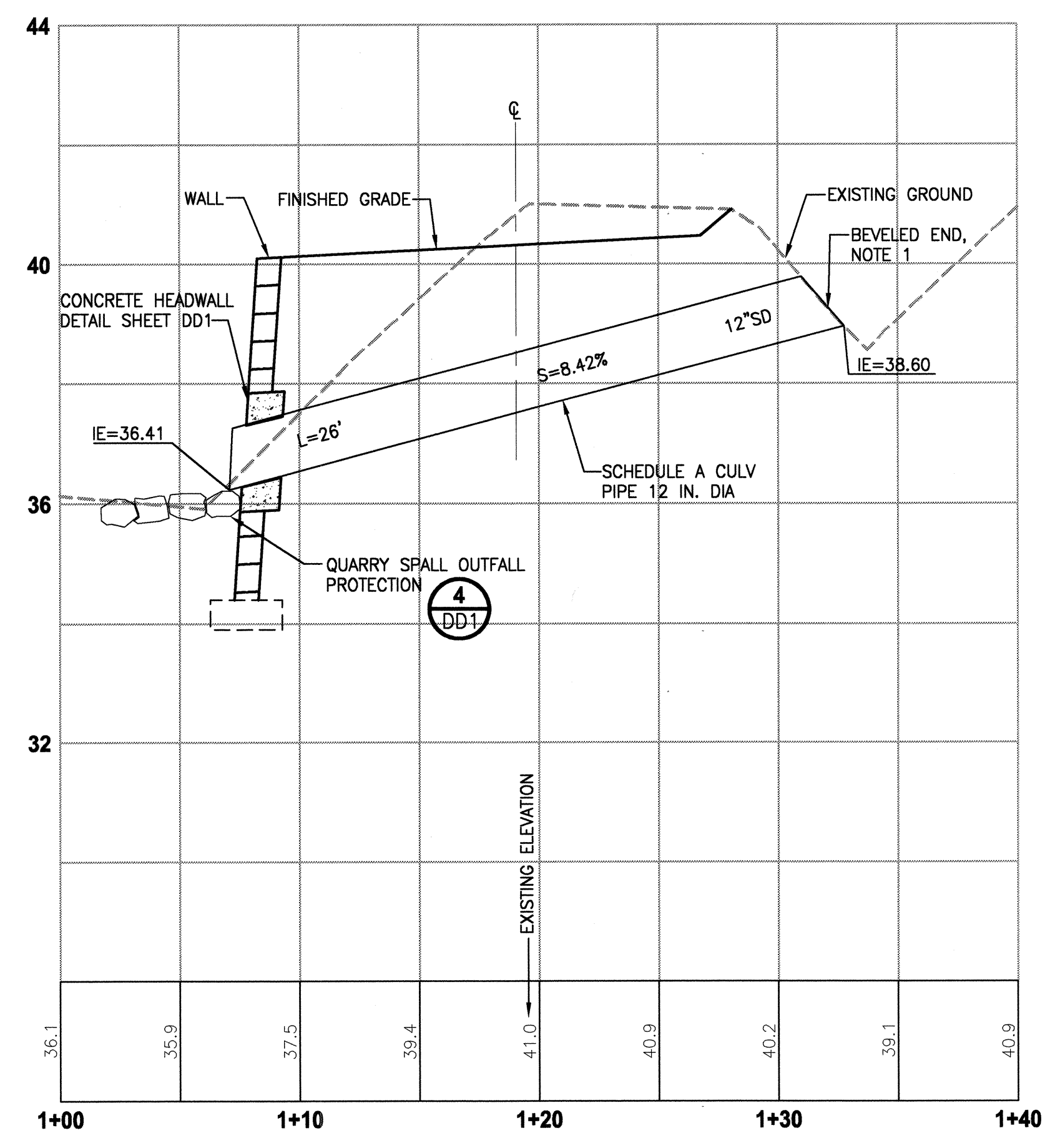
DATE: Dec 17, 2010 - 2:32pm PLOTTED BY: purgabut  
 IMAGES: XREF S: XBL1521075P12T01-bk | XBL1521075P12T01DRAIN-PR



**A-LINE STA 617+50  
 CULVERT PROFILE**  
 HORIZ: 1"=5'  
 VERT: 1"=2'



**A-LINE STA 626+14  
 CULVERT PROFILE**  
 HORIZ: 1"=5'  
 VERT: 1"=2'



**A-LINE STA 629+40  
 CULVERT PROFILE**  
 HORIZ: 1"=5'  
 VERT: 1"=2'

- NOTES:**
1. BEVELED END SECTION PER WSDOT STD PLAN B-70.20-00.
  2. TYPE 1 CATCH BASIN PER WSDOT STD PLAN B-5.20-00.
  3. RECTANGULAR VANED GRATE PER WSDOT STD PLAN B-30.30-00.
  4. STORM PIPE MUST MEET CITY OF REDMOND STANDARDS. NO STEEL STORM SEWER PIPE ALLOWED.
  5. CONCRETE COLLAR SHALL BE INCIDENTAL TO CULVERT PIPE TO BE EXTENDED. SEE WSDOT STD PLAN B-60.20-00.

THIS DEVELOPMENT SHALL BE CONSTRUCTED IN ACCORDANCE WITH THE CITY OF REDMOND STANDARD SPECIFICATIONS AND DETAILS, 2011 EDITION

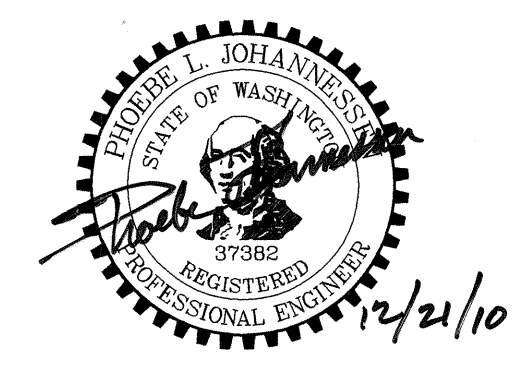
APPROVED FOR CONSTRUCTION  
 FOR: WILLIAM C. CAMPBELL  
 DIRECTOR OF PUBLIC WORKS  
 CITY OF REDMOND  
 DATE: 1-18-2011

PLAN CHK ENGR: N/A  
 STORM: 1/18 01-12-11  
 UTILITY: N/A  
 FIRE DEPT: N/A  
 TRANS / ENGR: N/A  
 PLANNING DEPT: N/A

THIS APPROVAL IS FOR THE DESIGN CONCEPT ONLY. THESE PLANS APPEAR TO BE IN CONFORMANCE WITH THE CITY OF REDMOND DESIGN STANDARDS FOR CONSTRUCTION. THIS APPROVAL SHALL NOT BE CONSTRUED AS AUTHORIZING CONSTRUCTION NOT IN ACCORDANCE WITH APPLICABLE CITY STANDARDS. THE CITY RESERVES THE RIGHT TO REQUIRE REVISIONS TO THE APPROVED PLANS TO ASSURE CONFORMANCE WITH CITY OF REDMOND DESIGN STANDARDS FOR CONSTRUCTION AT ANY TIME THAT IT IS DISCOVERED THAT THE PROPOSED CONSTRUCTION DOES NOT OTHERWISE MEET THE APPLICABLE CONSTRUCTION STANDARDS. THE OWNER IS REQUIRED TO PROVIDE DESIGNS AND PLANS IN ACCORDANCE WITH APPLICABLE CITY STANDARDS AND ASSURES THAT CONSTRUCTION IS ACCOMPLISHED IN ACCORDANCE WITH THOSE STANDARDS. THE OWNER AND/OR DESIGN ENGINEER AND/OR DEVELOPER MAY BE REQUIRED TO MAKE NECESSARY APPROVED FIELD REVISIONS TO CORRECT ANY ERRORS OR OMISSIONS FOUND ON THE APPROVED PLAN.

REVISIONS	DATE	BY	DESIGNED
			P. JOHANNESSEN
			DRAWN S. SIRE
			CHECKED H. LONGFELLOW
			APPROVED

ONE INCH AT FULL SCALE. IF NOT, SCALE ACCORDINGLY  
 FILE NAME: BL1521075P12T01DD1-3  
 JOB No. 554-1521-075  
 DATE: DECEMBER 2010



**Parametrix**  
 ENGINEERING . PLANNING . ENVIRONMENTAL SCIENCES  
 411 108TH AVENUE N.E., SUITE 1800  
 BELLEVUE, WASHINGTON 98004  
 T. 425.458.6200 F. 425.458.6363  
 www.parametrix.com

PROJECT NAME  
**EAST LAKE SAMMAMISH  
 MASTER PLAN TRAIL, REDMOND SEGMENT**  
 187TH AVENUE NE TO NE 70TH STREET

**DRAINAGE DETAILS**

11-0194  
 DRAWING NO. 45 OF 72  
**DD3**