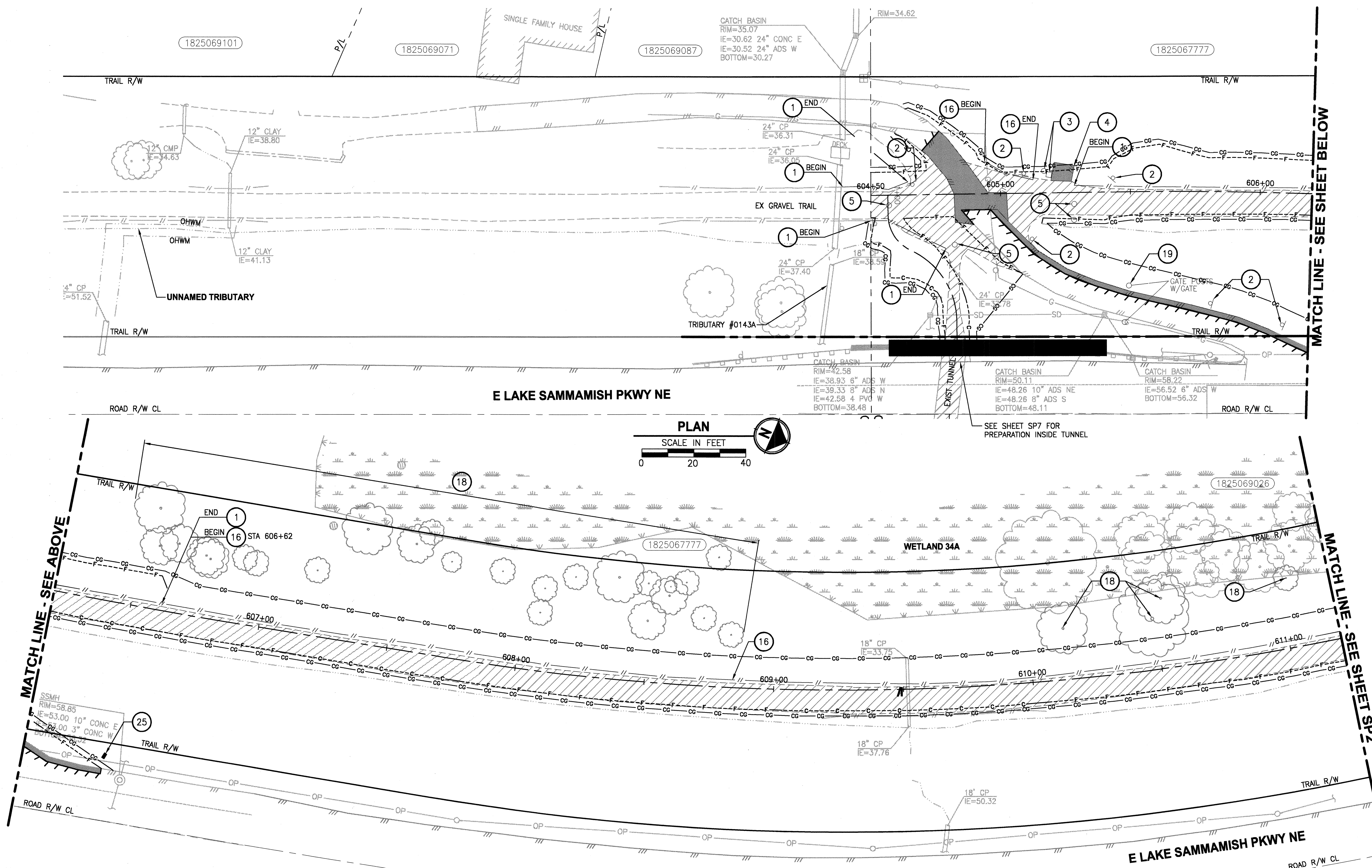


**SEC'S 7,18, TWP. 25 N., RGE. 06 E and SEC. 12, TWP. 25 N., RGE. 05 E.**

**SITE PREPARATION NOTES:**

- 1 RELOCATE SPLIT RAIL FENCE, SEE SCHEDULE ON SP7. SALVAGE & INSTALL IN LOCATION SHOWN ON AL SHEETS. REMOVE EXISTING WETLAND SIGNS AND INSTALL NEW WETLAND SIGNS PROVIDED BY THE OWNER.
- 2 RELOCATE SIGN. SEE PS SHEETS FOR NEW LOCATION.
- 3 RELOCATE TRASH CAN & REMOVE TRASH BAG DISPENSER. SEE PS SHEETS FOR NEW LOCATION.
- 4 REMOVE ASPHALT PAD & RELOCATE PORTABLE RESTROOM. SEE AL SHEETS FOR NEW LOCATION.
- 5 REMOVE BOLLARDS.
- 6 RELOCATE WOOD GUARDRAIL, SEE SCHEDULE ON SP7. SALVAGE AND INSTALL IN LOCATION SHOWN ON AL SHEETS.
- 7 REMOVE CHAIN LINK FENCE, SEE SCHEDULE ON SP7
- 8 REMOVE CHAIN LINK GATE.
- 9 REMOVE CULVERT. SEE DETAILS ON DD SHEETS.
- 10 NOT USED.
- 11 ADJUST MANHOLE TO FINISHED GRADE.
- 12 NOT USED.
- 13 NOT USED.
- 14 REMOVE SIGN.
- 15 NOT USED.
- 16 REMOVE SPLIT RAIL FENCE.
- 17 RELOCATE WOOD GUARD RAIL.
- 18 SEE TP SHEETS FOR TREE REMOVALS BEYOND CLEARING AND GRUBBING LIMITS. TREES SHALL BE FLAGGED AND APPROVED BY THE ENGINEER PRIOR TO REMOVAL.
- 19 REMOVE GATE POSTS AND GATE.
- 20 ABANDON TELEMETRY FOR SEWER FLOW MONITORING. INSTALL NEW METER BOX PER AL PLANS. COORDINATE WITH THE KC PROJECT REPRESENTATIVE.
- 21 NOT USED.
- 22 NOT USED.
- 23 NOT USED.
- 24 NOT USED.
- 25 RELOCATE MAILBOX. SEE PS SHEETS FOR NEW LOCATION.
- 26 RELOCATE POWER LINE. SEE AL SHEETS FOR NEW LOCATION.
- 27 NOT USED.
- 28 REMOVE TRAFFIC ARROW.
- 29 REMOVE RAISED PAVEMENT MARKER.
- 30 NOT USED.

THIS DEVELOPMENT SHALL BE CONSTRUCTED IN ACCORDANCE WITH THE CITY OF REDMOND STANDARD SPECIFICATIONS AND DETAILS, 2011 EDITION

APPROVED FOR CONSTRUCTION

*[Signature]*

FOR: WILLIAM J. CAMPBELL  
DIRECTOR OF PUBLIC WORKS  
CITY OF REZIMOND

DATE: *1-16-2011*

PLAN CHK ENGR *N/A*

STORM *02 01-12-11*

UTILITY *02 01-13-11*

FIRE DEPT *N/A*

TRANS / ENGR *02 01-18-11*

PLANNING DEPT *02 01-14-11*

THIS APPROVAL IS FOR THE DESIGN CONCEPT ONLY. THESE PLANS APPROVE TO BE IN CONFORMANCE WITH THE CITY OF REZIMOND DESIGN STANDARDS FOR CONSTRUCTION. THIS APPROVAL SHALL NOT BE CONSTRUED AS AN ENDORSEMENT OF THE DESIGN OR CONSTRUCTION OF THE PROJECT OR THE CITY RESERVES THE RIGHT TO REQUIRE REVISIONS TO THE APPROVED PLANS TO ASSURE CONFORMANCE WITH CITY OF REZIMOND DESIGN STANDARDS. CONSTRUCTION OF THE PROJECT SHALL BE IN ACCORDANCE WITH THE CITY OF REZIMOND DESIGN STANDARDS. THIS APPROVAL DOES NOT OTHERWISE MEET THE APPLICABLE CONSTRUCTION STANDARDS. THE OWNER IS REQUIRED TO PROVIDE DESIGNS AND PLANS IN ACCORDANCE WITH APPLICABLE CITY STANDARDS AND ASSURES THAT CONSTRUCTION IS ACCORDANCE WITH THOSE STANDARDS. THE OWNER AND/OR DESIGN ENGINEER AND/OR DEVELOPER MAY BE REQUIRED TO MAKE NECESSARY APPROVED FIELD REVISIONS TO CORRECT ANY ERRORS OR

44-0163

△	REVISIONS	DATE	BY	DESIGNED Y. HIO
				DRAWN B. PURGANAN
				CHECKED H. LONGFELLOW
				APPROVED

ONE INCH AT FULL SCALE.  
IF NOT, SCALE ACCORDINGLY.

FILE NAME	BL1521075P12T01SP1-7
JOB No.	554-1521-075
DATE	DECEMBER 2010



## Parametrix

ENGINEERING . PLANNING . ENVIRONMENTAL SCIENCE

411 108TH AVENUE N.E., SUITE 18  
BELLEVUE, WASHINGTON 98004  
T. 425.458.6200 F. 425.458.6363  
[www.parametrix.com](http://www.parametrix.com)

PROJECT NAME

## EAST LAKE SAMMAMISH MASTER PLAN TRAIL, REDMOND SEGMENT

187TH AVENUE NE TO NE 70TH STREET

## SITE PREPARATION PLAN

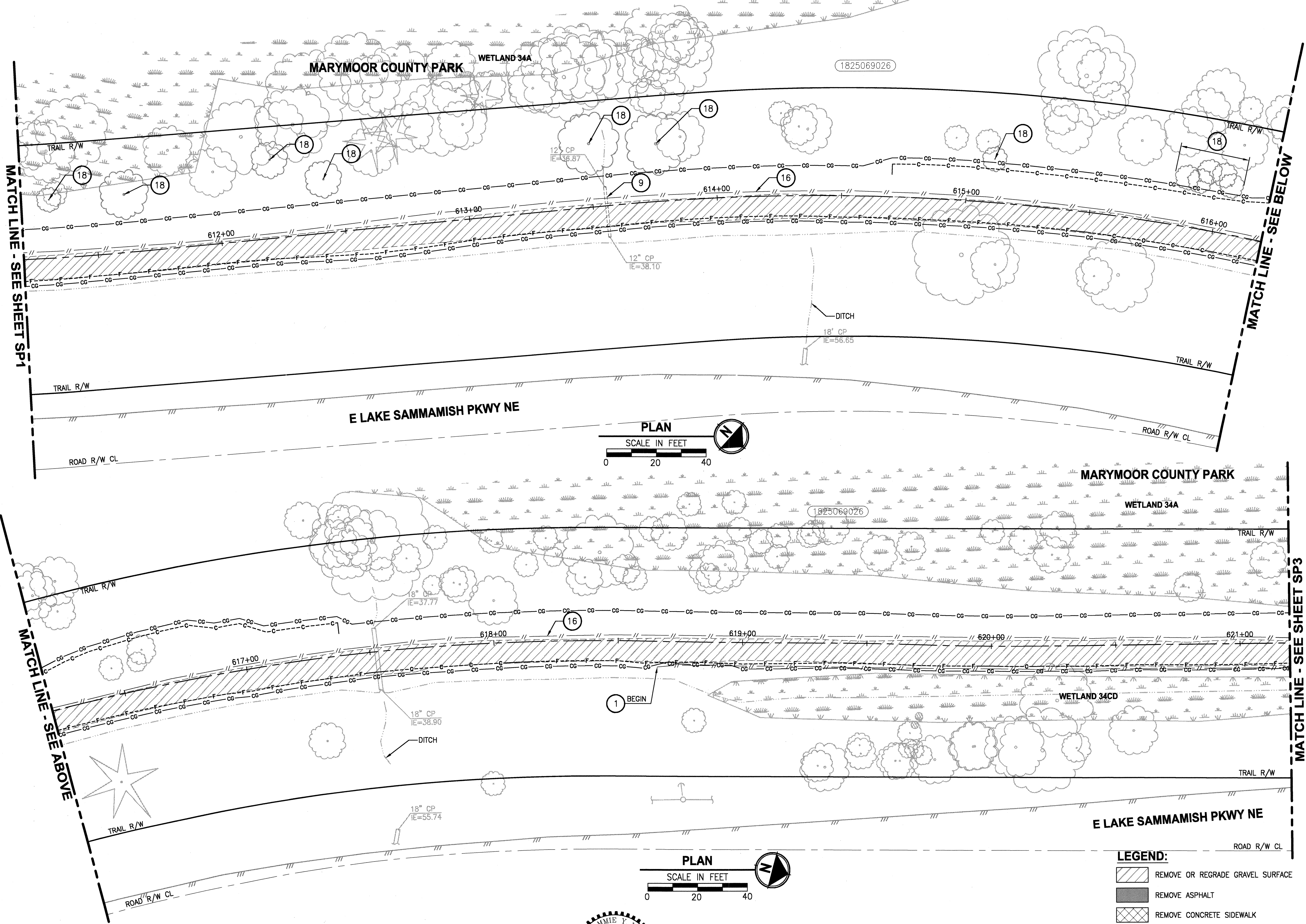
DRAWING NO.  
14 OF 72

**SP1**



DATE: Dec 16, 2010 - 3:29pm PLOTTED BY: purgubut IMAGES: XREF S: XBL1521075P12T01-BLK | XBL1521075P12T01-DE | XBL1521075P12T01-B4-North | XBL1521075P11T04-RW | XBL1521075P11T04-GS LINES | XBL1521075P12T01-PR | XBL1521075P12T01-SIT-LAYOUT | XBL1521075P11T04-BA520 | SP-NOTES | BL1521075-ADDITIONAL

SEC'S 7,18, TWP. 25 N., RGE. 06 E and SEC. 12, TWP. 25 N., RGE. 05 E.



SITE PREPARATION NOTES:

- 1 RELOCATE SPLIT RAIL FENCE, SEE SCHEDULE ON SP7. SALVAGE & INSTALL IN LOCATION SHOWN ON AL SHEETS. REMOVE EXISTING WETLAND SIGNS AND INSTALL NEW WETLAND SIGNS PROVIDED BY THE OWNER.
- 2 RELOCATE SIGN. SEE PS SHEETS FOR NEW LOCATION.
- 3 RELOCATE TRASH CAN & REMOVE TRASH BAG DISPENSER. SEE PS SHEETS FOR NEW LOCATION.
- 4 REMOVE ASPHALT PAD & RELOCATE PORTABLE RESTROOM. SEE AL SHEETS FOR NEW LOCATION.
- 5 REMOVE BOLLARDS.
- 6 RELOCATE WOOD GUARDRAIL, SEE SCHEDULE ON SP7. SALVAGE AND INSTALL IN LOCATION SHOWN ON AL SHEETS.
- 7 REMOVE CHAIN LINK FENCE, SEE SCHEDULE ON SP7
- 8 REMOVE CHAIN LINK GATE.
- 9 REMOVE CULVERT. SEE DETAILS ON DD SHEETS.
- 10 NOT USED.
- 11 ADJUST MANHOLE TO FINISHED GRADE.
- 12 NOT USED.
- 13 NOT USED.
- 14 REMOVE SIGN.
- 15 NOT USED.
- 16 REMOVE SPLIT RAIL FENCE.
- 17 RELOCATE WOOD GUARD RAIL.
- 18 SEE TP SHEETS FOR TREE REMOVALS BEYOND CLEARING AND GRUBBING LIMITS. TREES SHALL BE FLAGGED AND APPROVED BY THE ENGINEER PRIOR TO REMOVAL.
- 19 REMOVE GATE POSTS AND GATE.
- 20 ABANDON TELEMETRY FOR SEWER FLOW MONITORING. INSTALL NEW METER BOX PER AL PLANS. COORDINATE WITH THE KC PROJECT REPRESENTATIVE.
- 21 NOT USED.
- 22 NOT USED.
- 23 NOT USED.
- 24 NOT USED.
- 25 RELOCATE MAILBOX. SEE PS SHEETS FOR NEW LOCATION.
- 26 RELOCATE POWER LINE. SEE AL SHEETS FOR NEW LOCATION.
- 27 NOT USED.
- 28 REMOVE TRAFFIC ARROW.
- 29 REMOVE RAISED PAVEMENT MARKER.
- 30 NOT USED.

THIS DEVELOPMENT SHALL BE CONSTRUCTED IN ACCORDANCE WITH THE CITY OF REDMOND STANDARD SPECIFICATIONS AND DETAILS, 2011 EDITION

APPROVED FOR CONSTRUCTION	PLAN CHK ENGR	N/A
	STORM	12-12-11
FOR: WILLIAM CAMPBELL	UTILITY	1-13-11
DIRECTOR OF PUBLIC WORKS	FIRE DEPT	N/A
CITY OF REDMOND	TRANS / ENGR	1-12-11
DATE: 1-18-2011	PLANNING DEPT	1-14-11

THIS APPROVAL IS FOR THE DESIGN CONCEPT ONLY. THESE PLANS APPEAR TO BE IN CONFORMANCE WITH THE CITY OF REDMOND DESIGN STANDARDS FOR CONSTRUCTION. THIS APPROVAL SHALL NOT BE CONSTRUED AS AUTHORIZING CONSTRUCTION NOT IN ACCORDANCE WITH APPLICABLE CITY STANDARDS. THE CITY RESERVES THE RIGHT TO REQUIRE REVISIONS TO THE APPROVED PLANS TO ASSURE CONFORMANCE WITH CITY OF REDMOND DESIGN STANDARDS FOR CONSTRUCTION AT ANY TIME THAT IT IS DISCOVERED THAT THE PROPOSED CONSTRUCTION DOES NOT OTHERWISE MEET THE APPLICABLE CONSTRUCTION STANDARDS. THE OWNER IS REQUIRED TO PROVIDE DESIGNS AND PLANS IN ACCORDANCE WITH APPLICABLE CITY STANDARDS AND ASSURES THAT CONSTRUCTION IS ACCOMPLISHED IN ACCORDANCE WITH THOSE STANDARDS. THE OWNER AND/OR DESIGN ENGINEER AND/OR DEVELOPER MAY BE REQUIRED TO MAKE NECESSARY APPROVED FIELD REVISIONS TO CORRECT ANY ERRORS OR OMISSIONS FOUND ON THE APPROVED PLAN.

11-0164

REVISIONS	DATE	BY	DESIGNED
			Y. HO
			DRAWN
			B. PURGANAN
			CHECKED
			H. LONGFELLOW
			APPROVED

ONE INCH AT FULL SCALE.  
IF NOT, SCALE ACCORDINGLY  
FILE NAME  
BL1521075P12T01SP1-7  
JOB No.  
554-1521-075  
DATE  
DECEMBER 2010



**Parametrix**  
ENGINEERING · PLANNING · ENVIRONMENTAL SCIENCES  
411 108TH AVENUE N.E., SUITE 1000  
BELLEVUE, WASHINGTON 98004  
T: 425.458.6200 F: 425.458.6363  
www.parametrix.com

PROJECT NAME  
**EAST LAKE SAMMAMISH  
MASTER PLAN TRAIL, REDMOND SEGMENT**  
187TH AVENUE NE TO NE 70TH STREET

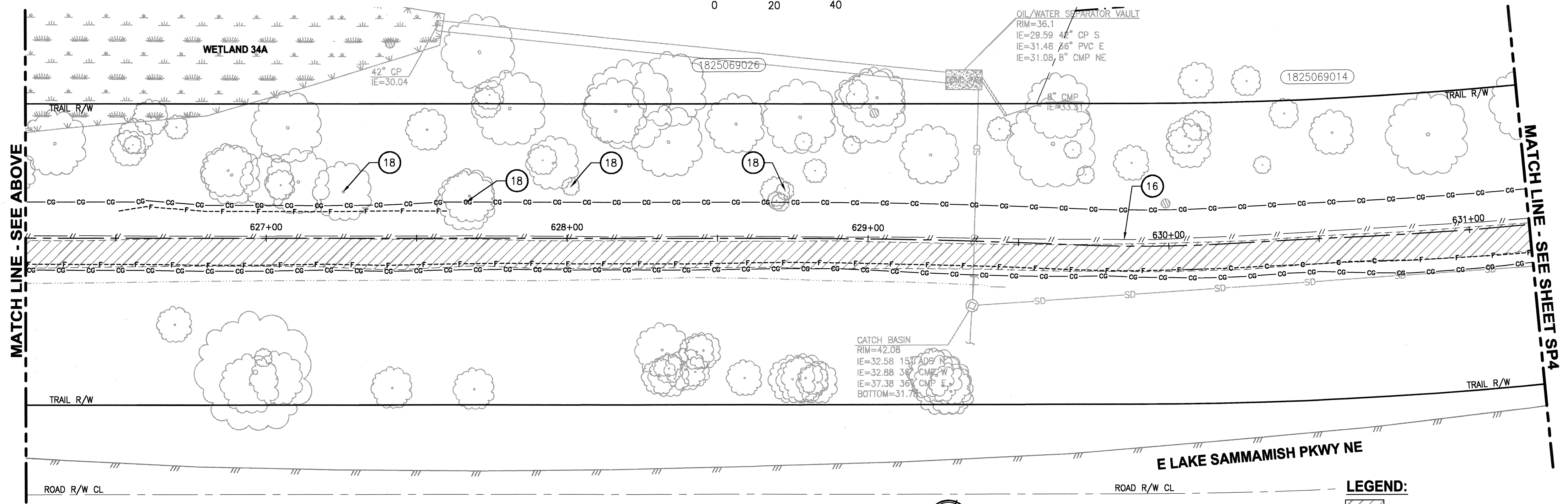
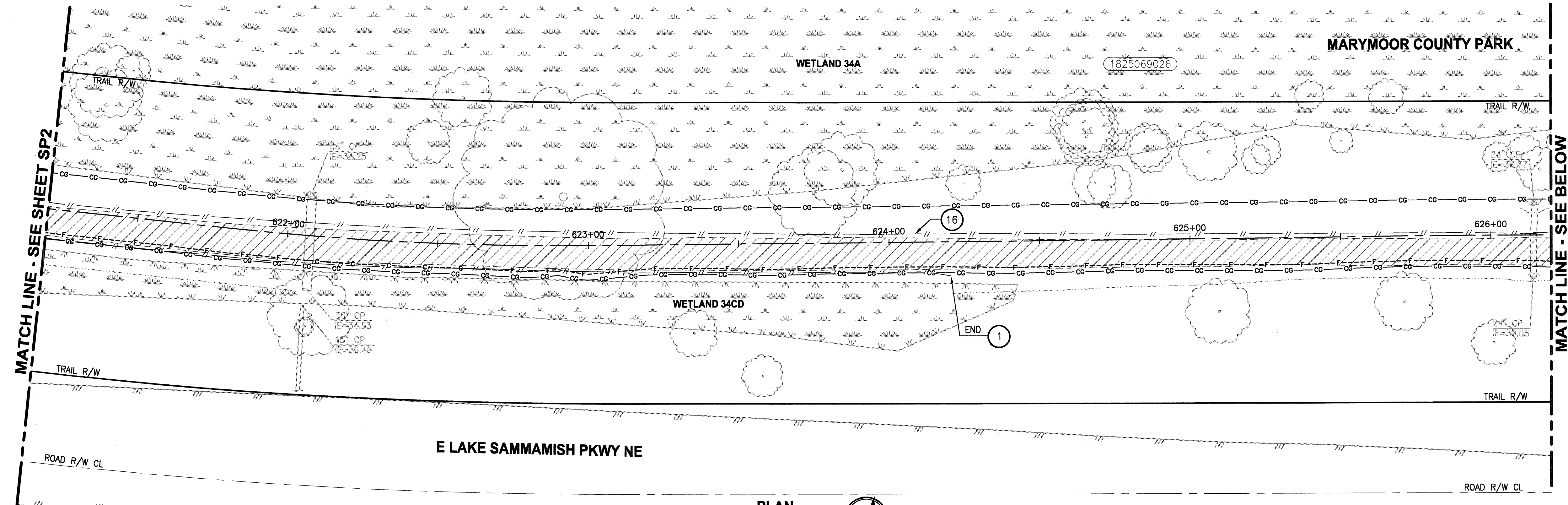
SITE PREPARATION PLAN

DRAWING NO.  
15 OF 72  
**SP2**



DATE: Dec 16, 2010 - 3:29pm PLOTTED BY: purgubut XREFS: XBL1521075P12T01-DE | XBL1521075P12T01-BA-North | XBL1521075P12T01-RW | XBL1521075P12T01-PR | XBL1521075P12T01-SIT-LAYOUT | XBL1521075P12T01-BA-S20 | SP-NOTES | BL1521075-ADDITIONAL

SEC'S 7,18, TWP. 25 N., RGE. 06 E and SEC. 12, TWP. 25 N., RGE. 05 E.



- SITE PREPARATION NOTES:**
- 1 RELOCATE SPLIT RAIL FENCE, SEE SCHEDULE ON SP7. SALVAGE & INSTALL IN LOCATION SHOWN ON AL SHEETS. REMOVE EXISTING WETLAND SIGNS AND INSTALL NEW WETLAND SIGNS PROVIDED BY THE OWNER.
  - 2 RELOCATE SIGN. SEE PS SHEETS FOR NEW LOCATION.
  - 3 RELOCATE TRASH CAN & REMOVE TRASH BAG DISPENSER. SEE PS SHEETS FOR NEW LOCATION.
  - 4 REMOVE ASPHALT PAD & RELOCATE PORTABLE RESTROOM. SEE AL SHEETS FOR NEW LOCATION.
  - 5 REMOVE BOLLARDS.
  - 6 RELOCATE WOOD GUARDRAIL, SEE SCHEDULE ON SP7. SALVAGE AND INSTALL IN LOCATION SHOWN ON AL SHEETS.
  - 7 REMOVE CHAIN LINK FENCE, SEE SCHEDULE ON SP7
  - 8 REMOVE CHAIN LINK GATE.
  - 9 REMOVE CULVERT. SEE DETAILS ON DD SHEETS.
  - 10 NOT USED.
  - 11 ADJUST MANHOLE TO FINISHED GRADE.
  - 12 NOT USED.
  - 13 NOT USED.
  - 14 REMOVE SIGN.
  - 15 NOT USED.
  - 16 REMOVE SPLIT RAIL FENCE.
  - 17 RELOCATE WOOD GUARD RAIL.
  - 18 SEE TP SHEETS FOR TREE REMOVALS BEYOND CLEARING AND GRUBBING LIMITS. TREES SHALL BE FLAGGED AND APPROVED BY THE ENGINEER PRIOR TO REMOVAL.
  - 19 REMOVE GATE POSTS AND GATE.
  - 20 ABANDON TELEMTRY FOR SEWER FLOW MONITORING. INSTALL NEW METER BOX PER AL PLANS. COORDINATE WITH THE KC PROJECT REPRESENTATIVE.
  - 21 NOT USED.
  - 22 NOT USED.
  - 23 NOT USED.
  - 24 NOT USED.
  - 25 RELOCATE MAILBOX. SEE PS SHEETS FOR NEW LOCATION.
  - 26 RELOCATE POWER LINE. SEE AL SHEETS FOR NEW LOCATION.
  - 27 NOT USED.
  - 28 REMOVE TRAFFIC ARROW.
  - 29 REMOVE RAISED PAVEMENT MARKER.
  - 30 NOT USED.

THIS DEVELOPMENT SHALL BE CONSTRUCTED IN ACCORDANCE WITH THE CITY OF REDMOND STANDARD SPECIFICATIONS AND DETAILS, 2011 EDITION

APPROVED FOR CONSTRUCTION	PLAN CHK ENGR
<i>[Signature]</i>	N/A
FOR: WILLIAM J. CAMPBELL	STORM
DIRECTOR OF PUBLIC WORKS	YES 01-12-11
CITY OF REDMOND	UTILITY
	YES 1-13-11
	FIRE DEPT
	N/A
	TRANS / ENGR
	YES 1-12-11
	PLANNING DEPT
	YES 1-14-11
DATE: 1-18-2011	

THIS APPROVAL IS FOR THE DESIGN CONCEPT ONLY. THESE PLANS ARE TO BE IN CONFORMANCE WITH THE CITY OF REDMOND DESIGN STANDARDS FOR CONSTRUCTION. THIS APPROVAL SHALL NOT BE CONSIDERED AS AUTHORIZING CONSTRUCTION NOT IN ACCORDANCE WITH APPLICABLE CITY STANDARDS. THE CITY RESERVES THE RIGHT TO REQUIRE REVISIONS TO THE APPROVED PLANS TO ASSURE CONFORMANCE WITH CITY OF REDMOND DESIGN STANDARDS FOR CONSTRUCTION AT ANY TIME THAT IT IS DISCOVERED THAT THE PROPOSED CONSTRUCTION DOES NOT OTHERWISE MEET THE APPLICABLE CONSTRUCTION STANDARDS. THE OWNER IS REQUIRED TO PROVIDE DESIGNS AND PLANS IN ACCORDANCE WITH APPLICABLE CITY STANDARDS AND ASSURES THAT CONSTRUCTION IS ACCOMPLISHED IN ACCORDANCE WITH THOSE STANDARDS. THE OWNER AND/OR DESIGN ENGINEER AND/OR DEVELOPER MAY BE REQUIRED TO MAKE NECESSARY APPROVED FIELD REVISIONS TO CORRECT ANY ERRORS OR OMISSIONS FOUND ON THE APPROVED PLAN.

- LEGEND:**
- REMOVE OR REGRADE GRAVEL SURFACE
  - REMOVE ASPHALT
  - REMOVE CONCRETE SIDEWALK
  - SAW CUT

REVISIONS	DATE	BY	DESIGNED
			Y. HO
			DRAWN
			B. PURGANAN
			CHECKED
			H. LONGFELLOW
			APPROVED

ONE INCH AT FULL SCALE.  
IF NOT, SCALE ACCORDINGLY

FILE NAME  
BL1521075P12T01SP1-7

JOB No.  
554-1521-075

DATE  
DECEMBER 2010



**Parametrix**

ENGINEERING • PLANNING • ENVIRONMENTAL SCIENCES

411 108TH AVENUE N.E., SUITE 1800  
BELLEVUE, WASHINGTON 98004  
T: 425.456.6200 F: 425.456.6363  
www.parametrix.com

PROJECT NAME  
**EAST LAKE SAMMAMISH  
MASTER PLAN TRAIL, REDMOND SEGMENT**

187TH AVENUE NE TO NE 70TH STREET

**SITE PREPARATION PLAN**

**SP3**

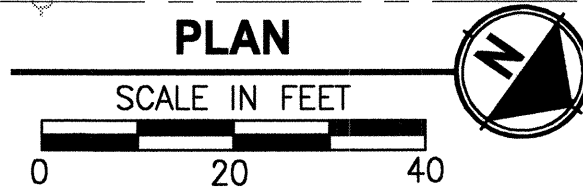
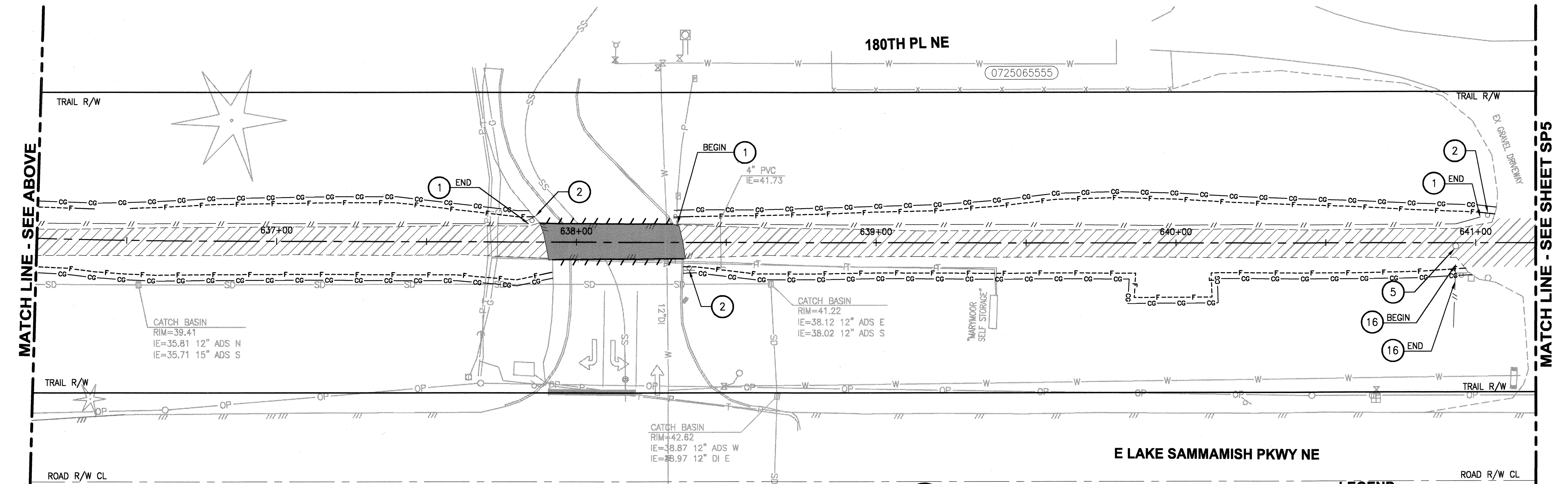
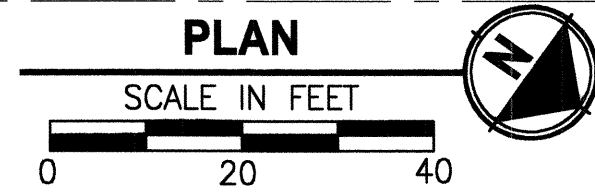
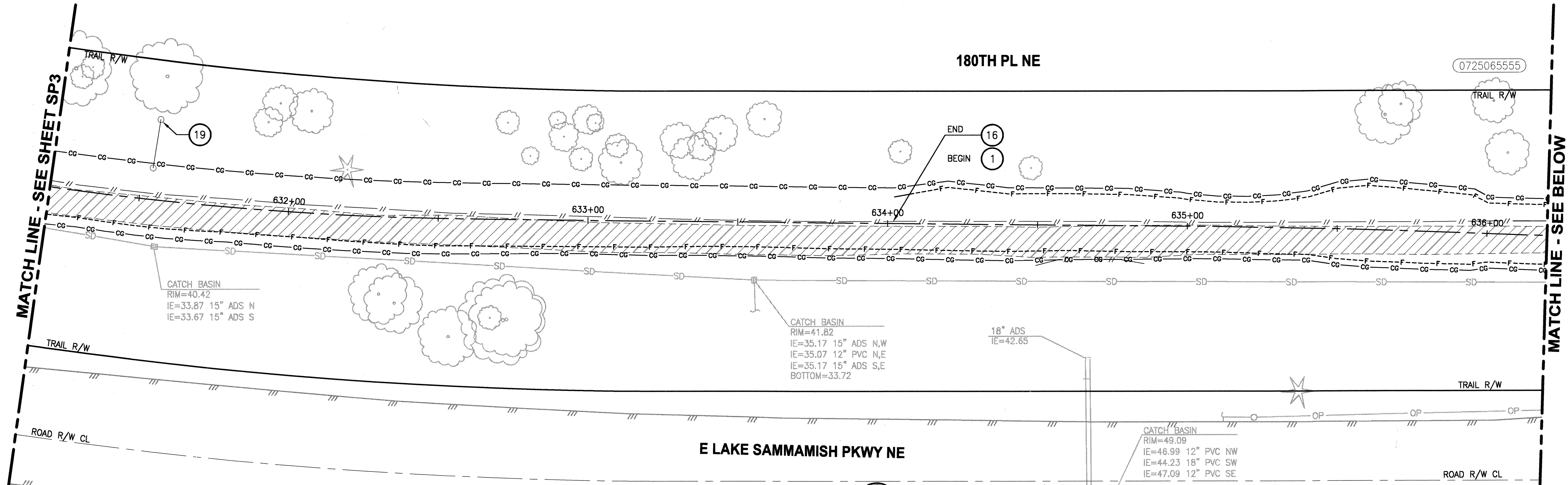
11-0165

DRAWING NO.  
16 OF 72



DATE: Dec 16, 2010 - 3:30pm PLOTTED BY: purgubut XREFS: XBL1521075P12T01-DE | XBL1521075P12T01-BA-North | XBL1521075P12T01-RW | XBL1521075P12T01-CL | XBL1521075P12T01-SP-NOTES | XBL1521075-ADDITIONAL

SEC'S 7,18, TWP. 25 N., RGE. 06 E and SEC. 12, TWP. 25 N., RGE. 05 E.



LEGEND:

- REMOVE OR REGRADE GRAVEL SURFACE
- REMOVE ASPHALT
- REMOVE CONCRETE SIDEWALK
- SAW CUT

SITE PREPARATION NOTES:

- 1 RELOCATE SPLIT RAIL FENCE, SEE SCHEDULE ON SP7. SALVAGE & INSTALL IN LOCATION SHOWN ON AL SHEETS. REMOVE EXISTING WETLAND SIGNS AND INSTALL NEW WETLAND SIGNS PROVIDED BY THE OWNER.
- 2 RELOCATE SIGN. SEE PS SHEETS FOR NEW LOCATION.
- 3 RELOCATE TRASH CAN & REMOVE TRASH BAG DISPENSER. SEE PS SHEETS FOR NEW LOCATION.
- 4 REMOVE ASPHALT PAD & RELOCATE PORTABLE RESTROOM. SEE AL SHEETS FOR NEW LOCATION.
- 5 REMOVE BOLLARDS.
- 6 RELOCATE WOOD GUARDRAIL, SEE SCHEDULE ON SP7. SALVAGE AND INSTALL IN LOCATION SHOWN ON AL SHEETS.
- 7 REMOVE CHAIN LINK FENCE, SEE SCHEDULE ON SP7
- 8 REMOVE CHAIN LINK GATE.
- 9 REMOVE CULVERT. SEE DETAILS ON DD SHEETS.
- 10 NOT USED.
- 11 ADJUST MANHOLE TO FINISHED GRADE.
- 12 NOT USED.
- 13 NOT USED.
- 14 REMOVE SIGN.
- 15 NOT USED.
- 16 REMOVE SPLIT RAIL FENCE.
- 17 RELOCATE WOOD GUARD RAIL.
- 18 SEE TP SHEETS FOR TREE REMOVALS BEYOND CLEARING AND GRUBBING LIMITS. TREES SHALL BE FLAGGED AND APPROVED BY THE ENGINEER PRIOR TO REMOVAL.
- 19 REMOVE GATE POSTS AND GATE.
- 20 ABANDON TELEMTRY FOR SEWER FLOW MONITORING. INSTALL NEW METER BOX PER AL PLANS. COORDINATE WITH THE KC PROJECT REPRESENTATIVE.
- 21 NOT USED.
- 22 NOT USED.
- 23 NOT USED.
- 24 NOT USED.
- 25 RELOCATE MAILBOX. SEE PS SHEETS FOR NEW LOCATION.
- 26 RELOCATE POWER LINE. SEE AL SHEETS FOR NEW LOCATION.
- 27 NOT USED.
- 28 REMOVE TRAFFIC ARROW.
- 29 REMOVE RAISED PAVEMENT MARKER.
- 30 NOT USED.

THIS DEVELOPMENT SHALL BE CONSTRUCTED IN ACCORDANCE WITH THE CITY OF REDMOND STANDARD SPECIFICATIONS AND DETAILS, 2011 EDITION

APPROVED FOR CONSTRUCTION  WILLIAM J. CAMPBELL DIRECTOR OF PUBLIC WORKS CITY OF REDMOND	PLAN CHK ENR N/A STORM 12-12-11 UTILITY 1-13-11 FIRE DEPT N/A TRANS / ENR N/A PLANNING DEPT 1-14-11
DATE: 1-16-2011	

THIS APPROVAL IS FOR THE DESIGN CONCEPT ONLY. THESE PLANS APPEAR TO BE IN CONFORMANCE WITH THE CITY OF REDMOND DESIGN STANDARDS FOR CONSTRUCTION. THIS APPROVAL SHALL NOT BE CONSTRUED AS AUTHORIZING CONSTRUCTION NOT IN ACCORDANCE WITH APPLICABLE CITY STANDARDS. THE CITY RESERVES THE RIGHT TO REQUIRE REVISIONS TO THE APPROVED PLANS TO ASSURE CONFORMANCE WITH CITY OF REDMOND DESIGN STANDARDS FOR CONSTRUCTION AT ANY TIME THAT IT IS DISCOVERED THAT THE PROPOSED CONSTRUCTION DOES NOT OTHERWISE MEET THE APPLICABLE CONSTRUCTION STANDARDS. THE OWNER IS REQUIRED TO PROVIDE DESIGNS AND PLANS IN ACCORDANCE WITH APPLICABLE CITY STANDARDS AND ASSURES THAT CONSTRUCTION IS ACCOMPLISHED IN ACCORDANCE WITH THOSE STANDARDS. THE OWNER AND/OR DESIGN ENGINEER AND/OR DEVELOPER MAY BE REQUIRED TO MAKE NECESSARY APPROVED FIELD REVISIONS TO CORRECT ANY ERRORS OR OMISSIONS FOUND ON THE APPROVED PLAN.

11-0166

REVISIONS	DATE	BY	DESIGNED Y. HO
			DRAWN B. PURGANAN
			CHECKED H. LONGFELLOW
			APPROVED

ONE INCH AT FULL SCALE. IF NOT, SCALE ACCORDINGLY
FILE NAME BL1521075P12T01SP1-7
JOB No. 554-1521-075
DATE DECEMBER 2010



**Parametrix**  
411 108TH AVENUE N.E., SUITE 1800  
BELLEVUE, WASHINGTON 98004  
T: 425.458.6200 F: 425.458.6363  
www.parametrix.com

ENGINEERING . PLANNING . ENVIRONMENTAL SCIENCES

PROJECT NAME

EAST LAKE SAMMAMISH  
MASTER PLAN TRAIL, REDMOND SEGMENT

187TH AVENUE NE TO NE 70TH STREET

SITE PREPARATION PLAN

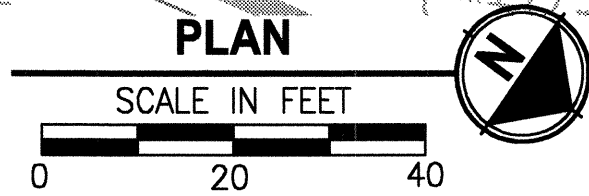
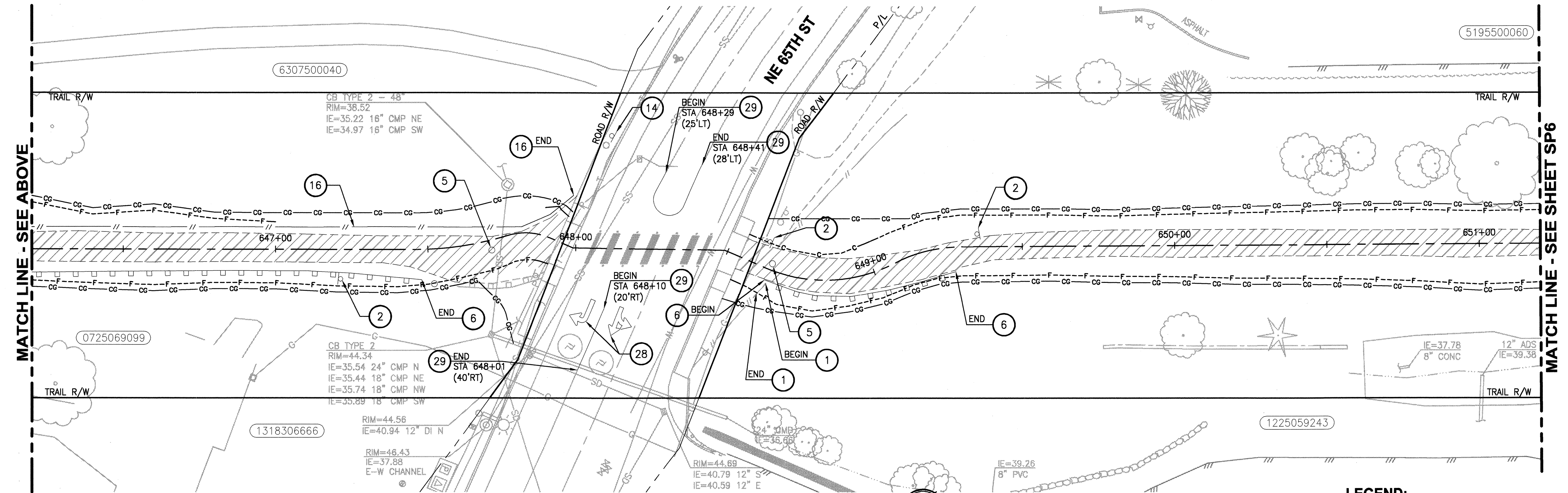
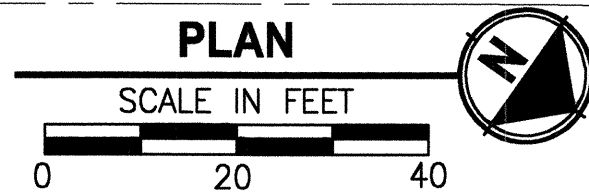
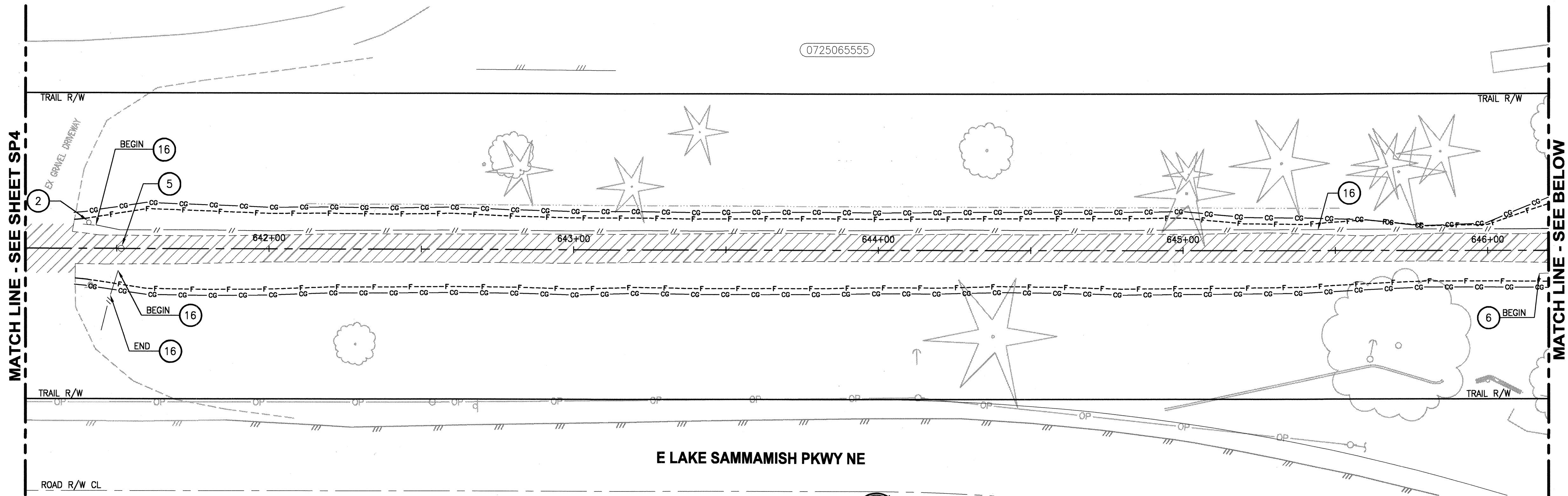
SP4

17 OF 72



DATE: Dec 16, 2010 - 3:32pm PLOTTED BY: purgubut IMAGES: XREF'S: XBL1521075P12T01-DE | XRL1521075P12T01-DE | XRL1521075P12T01-BA-North | XBL1521075P12T01-RW | XBL1521075P12T01-PR | XBL1521075P12T01-SHT-LAYOUT | XBL1521075P12T01-BA520 | SP-NOTES | BL1521075-ADDITIONAL

SEC'S 7,18, TWP. 25 N., RGE. 06 E and SEC. 12, TWP. 25 N., RGE. 05 E.



LEGEND:

- REMOVE OR REGRADE GRAVEL SURFACE
- REMOVE ASPHALT
- REMOVE CONCRETE SIDEWALK
- SAW CUT

SITE PREPARATION NOTES:

- RELOCATE SPLIT RAIL FENCE, SEE SCHEDULE ON SP7. SALVAGE & INSTALL IN LOCATION SHOWN ON AL SHEETS. REMOVE EXISTING WETLAND SIGNS AND INSTALL NEW WETLAND SIGNS PROVIDED BY THE OWNER.
- RELOCATE SIGN. SEE PS SHEETS FOR NEW LOCATION.
- RELOCATE TRASH CAN & REMOVE TRASH BAG DISPENSER. SEE PS SHEETS FOR NEW LOCATION.
- REMOVE ASPHALT PAD & RELOCATE PORTABLE RESTROOM. SEE AL SHEETS FOR NEW LOCATION.
- REMOVE BOLLARDS.
- RELOCATE WOOD GUARDRAIL, SEE SCHEDULE ON SP7. SALVAGE AND INSTALL IN LOCATION SHOWN ON AL SHEETS.
- REMOVE CHAIN LINK FENCE, SEE SCHEDULE ON SP7.
- REMOVE CHAIN LINK GATE.
- REMOVE CULVERT. SEE DETAILS ON DD SHEETS.
- NOT USED.
- ADJUST MANHOLE TO FINISHED GRADE.
- NOT USED.
- NOT USED.
- REMOVE SIGN.
- NOT USED.
- REMOVE SPLIT RAIL FENCE.
- RELOCATE WOOD GUARD RAIL.
- SEE TP SHEETS FOR TREE REMOVALS BEYOND CLEARING AND GRUBBING LIMITS. TREES SHALL BE FLAGGED AND APPROVED BY THE ENGINEER PRIOR TO REMOVAL.
- REMOVE GATE POSTS AND GATE.
- ABANDON TELEMTRY FOR SEWER FLOW MONITORING. INSTALL NEW METER BOX PER AL PLANS. COORDINATE WITH THE KC PROJECT REPRESENTATIVE.
- NOT USED.
- NOT USED.
- NOT USED.
- NOT USED.
- RELOCATE MAILBOX. SEE PS SHEETS FOR NEW LOCATION.
- RELOCATE POWER LINE. SEE AL SHEETS FOR NEW LOCATION.
- NOT USED.
- REMOVE TRAFFIC ARROW.
- REMOVE RAISED PAVEMENT MARKER.
- NOT USED.

THIS DEVELOPMENT SHALL BE CONSTRUCTED IN ACCORDANCE WITH THE CITY OF REDMOND STANDARD SPECIFICATIONS AND DETAILS, 2011 EDITION

APPROVED FOR CONSTRUCTION	PLAN CHK ENGR	N/A
FOR: WILLIAM J. CAMPBELL	STORM	11-13-11
DIRECTOR OF PUBLIC WORKS	UTILITY	11-13-11
CITY OF REDMOND	FIRE DEPT	N/A
DATE: 1-18-2011	TRANS / ENGR	11-13-11
	PLANNING DEPT	11-13-11

THIS APPROVAL IS FOR THE DESIGN CONCEPT ONLY. THESE PLANS APPEAR TO BE IN CONFORMANCE WITH THE CITY OF REDMOND DESIGN STANDARDS FOR CONSTRUCTION. THIS APPROVAL SHALL NOT BE CONSTRUED AS AUTHORIZING CONSTRUCTION NOT IN ACCORDANCE WITH APPLICABLE CITY STANDARDS. THE CITY RESERVES THE RIGHT TO REQUIRE REVISIONS TO THE APPROVED PLANS TO ASSURE CONFORMANCE WITH CITY OF REDMOND DESIGN STANDARDS FOR CONSTRUCTION AT ANY TIME THAT IT IS DISCOVERED THAT THE PROPOSED CONSTRUCTION DOES NOT OTHERWISE MEET THE APPLICABLE CONSTRUCTION STANDARDS. THE OWNER IS REQUIRED TO PROVIDE DESIGNS AND PLANS IN ACCORDANCE WITH APPLICABLE CITY STANDARDS AND ASSURES THAT CONSTRUCTION IS ACCOMPLISHED IN ACCORDANCE WITH THOSE STANDARDS. THE OWNER AND/OR DESIGN ENGINEER AND/OR DEVELOPER MAY BE REQUIRED TO MAKE NECESSARY APPROVED FIELD REVISIONS TO CORRECT ANY ERRORS OR OMISSIONS FOUND ON THE APPROVED PLAN.

11-0167

REVISIONS	DATE	BY	DESIGNED
			Y. HO
			B. PURGANAN
			CHECKED
			H. LONGFELLOW
			APPROVED

ONE INCH AT FULL SCALE. IF NOT, SCALE ACCORDINGLY
FILE NAME
BL1521075P12T01SP1-7
JOB No.
554-1521-075
DATE
DECEMBER 2010



Parametrix
ENGINEERING • PLANNING • ENVIRONMENTAL SCIENCES
411 108TH AVENUE N.E., SUITE 1000
BELLEVUE, WASHINGTON 98004
T. 425.458.6200 F. 425.458.6363
www.parametrix.com

PROJECT NAME
EAST LAKE SAMMAMISH
MASTER PLAN TRAIL, REDMOND SEGMENT
187TH AVENUE NE TO NE 70TH STREET

SITE PREPARATION PLAN

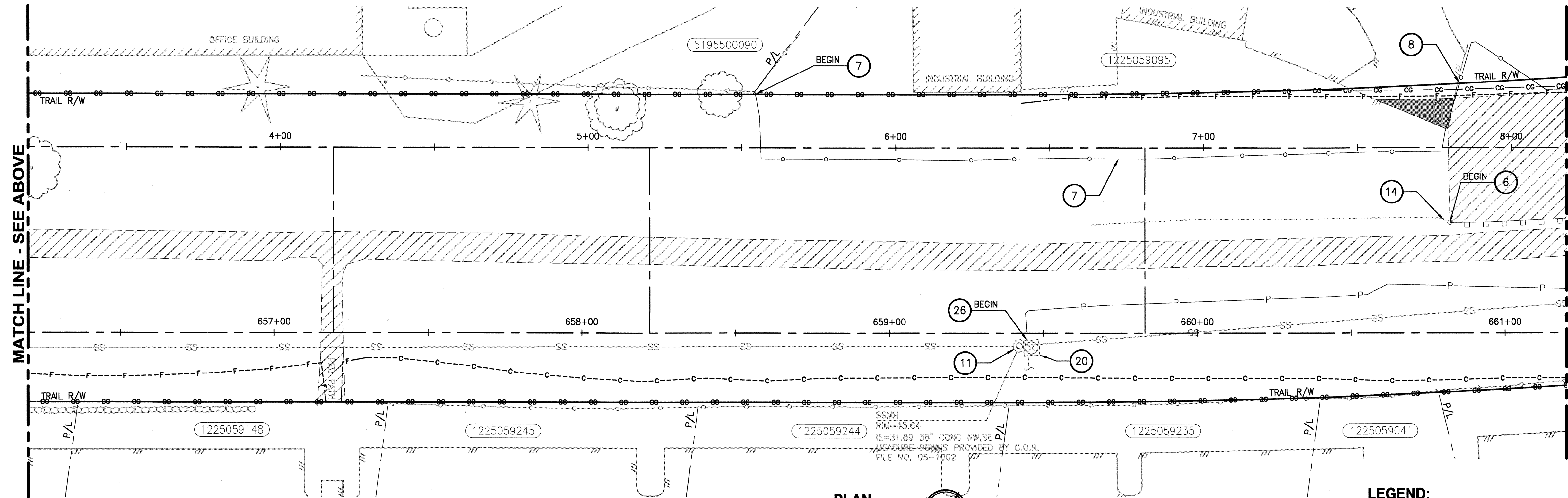
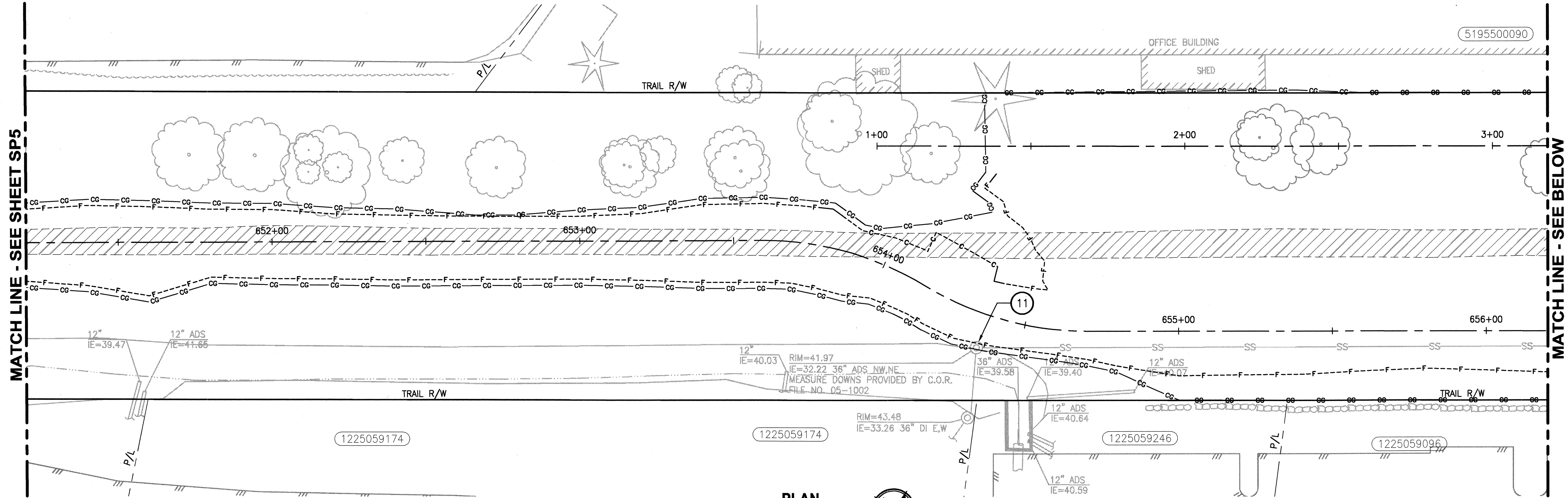
DRAWING NO.  
18 OF 72

SP5



DATE: Dec 16, 2010 - 3:34pm PLOTTED BY: purgbut IMAGES: XREFS: XBL1521075P12T01-10k | XBL1521075P12T01-DE | XBL1521075P12T01-BA-North | XBL1521075P12T01-RW | XBL1521075P12T01-SS LINES | XBL1521075P12T01-SHT-LAYOUT | XBL1521075P12T01-SHT-NOTES | BL1521075-ADDITIONAL

SEC'S 7,18, TWP. 25 N., RGE. 06 E and SEC. 12, TWP. 25 N., RGE. 05 E.



SITE PREPARATION NOTES:

- 1 RELOCATE SPLIT RAIL FENCE, SEE SCHEDULE ON SP7, SALVAGE & INSTALL IN LOCATION SHOWN ON AL SHEETS. REMOVE EXISTING WETLAND SIGNS AND INSTALL NEW WETLAND SIGNS PROVIDED BY THE OWNER.
- 2 RELOCATE SIGN. SEE PS SHEETS FOR NEW LOCATION.
- 3 RELOCATE TRASH CAN & REMOVE TRASH BAG DISPENSER. SEE PS SHEETS FOR NEW LOCATION.
- 4 REMOVE ASPHALT PAD & RELOCATE PORTABLE RESTROOM. SEE AL SHEETS FOR NEW LOCATION.
- 5 REMOVE BOLLARDS.
- 6 RELOCATE WOOD GUARDRAIL, SEE SCHEDULE ON SP7, SALVAGE AND INSTALL IN LOCATION SHOWN ON AL SHEETS.
- 7 REMOVE CHAIN LINK FENCE, SEE SCHEDULE ON SP7
- 8 REMOVE CHAIN LINK GATE.
- 9 REMOVE CULVERT. SEE DETAILS ON DD SHEETS.
- 10 NOT USED.
- 11 ADJUST MANHOLE TO FINISHED GRADE.
- 12 NOT USED.
- 13 NOT USED.
- 14 REMOVE SIGN.
- 15 NOT USED.
- 16 REMOVE SPLIT RAIL FENCE.
- 17 RELOCATE WOOD GUARD RAIL.
- 18 SEE TP SHEETS FOR TREE REMOVALS BEYOND CLEARING AND GRUBBING LIMITS. TREES SHALL BE FLAGGED AND APPROVED BY THE ENGINEER PRIOR TO REMOVAL.
- 19 REMOVE GATE POSTS AND GATE.
- 20 ABANDON TELEMETRY FOR SEWER FLOW MONITORING. INSTALL NEW METER BOX PER AL PLANS. COORDINATE WITH THE KC PROJECT REPRESENTATIVE.
- 21 NOT USED.
- 22 NOT USED.
- 23 NOT USED.
- 24 NOT USED.
- 25 RELOCATE MAILBOX. SEE PS SHEETS FOR NEW LOCATION.
- 26 RELOCATE POWER LINE. SEE AL SHEETS FOR NEW LOCATION.
- 27 NOT USED.
- 28 REMOVE TRAFFIC ARROW.
- 29 REMOVE RAISED PAVEMENT MARKER.
- 30 NOT USED.

THIS DEVELOPMENT SHALL BE CONSTRUCTED IN ACCORDANCE WITH THE CITY OF REDMOND STANDARD SPECIFICATIONS AND DETAILS, 2011 EDITION

APPROVED FOR CONSTRUCTION <i>[Signature]</i> FOR: WILLIAM J. CAMPBELL DIRECTOR OF PUBLIC WORKS CITY OF REDMOND DATE: 1-18-2011	PLAN CHK ENGR <i>[Signature]</i> STORM: 01-12-11 UTILITY: 01-13-11 FIRE DEPT: N/A TRANS / ENGR: 01-12-11 PLANNING DEPT: 01-14-11
---	--

THIS APPROVAL IS FOR THE DESIGN CONCEPT ONLY. THESE PLANS APPEAR TO BE IN CONFORMANCE WITH THE CITY OF REDMOND DESIGN STANDARDS FOR CONSTRUCTION. THIS APPROVAL SHALL NOT BE CONSTRUED AS AUTHORIZING CONSTRUCTION NOT IN ACCORDANCE WITH APPLICABLE CITY STANDARDS. THE CITY RESERVES THE RIGHT TO REQUIRE REVISIONS TO THE APPROVED PLANS TO ASSURE CONFORMANCE WITH CITY OF REDMOND DESIGN STANDARDS FOR CONSTRUCTION AT ANY TIME THAT IT IS DISCOVERED THAT THE PROPOSED CONSTRUCTION DOES NOT OTHERWISE MEET THE APPLICABLE CONSTRUCTION STANDARDS. THE OWNER IS REQUIRED TO PROVIDE DESIGNS AND PLANS IN ACCORDANCE WITH APPLICABLE CITY STANDARDS AND ASSURES THAT CONSTRUCTION IS ACCOMPLISHED IN ACCORDANCE WITH THOSE STANDARDS. THE OWNER AND/OR DESIGN ENGINEER AND/OR DEVELOPER MAY BE REQUIRED TO MAKE NECESSARY APPROVED FIELD REVISIONS TO CORRECT ANY ERRORS OR OMISSIONS FOUND ON THE APPROVED PLAN.

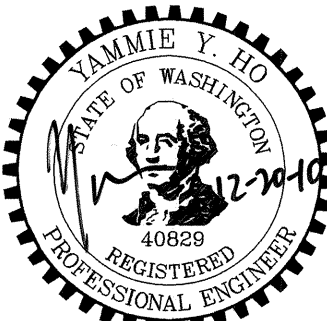
11-0168

DRAWING NO.  
19 OF 72

SP6

REVISIONS	DATE	BY	DESIGNED Y. HO
			DRAWN B. PURGANAN
			CHECKED H. LONGFELLOW
			APPROVED

ONE INCH AT FULL SCALE. IF NOT, SCALE ACCORDINGLY
FILE NAME BL1521075P12T01SP1-7
JOB No. 554-1521-075
DATE DECEMBER 2010



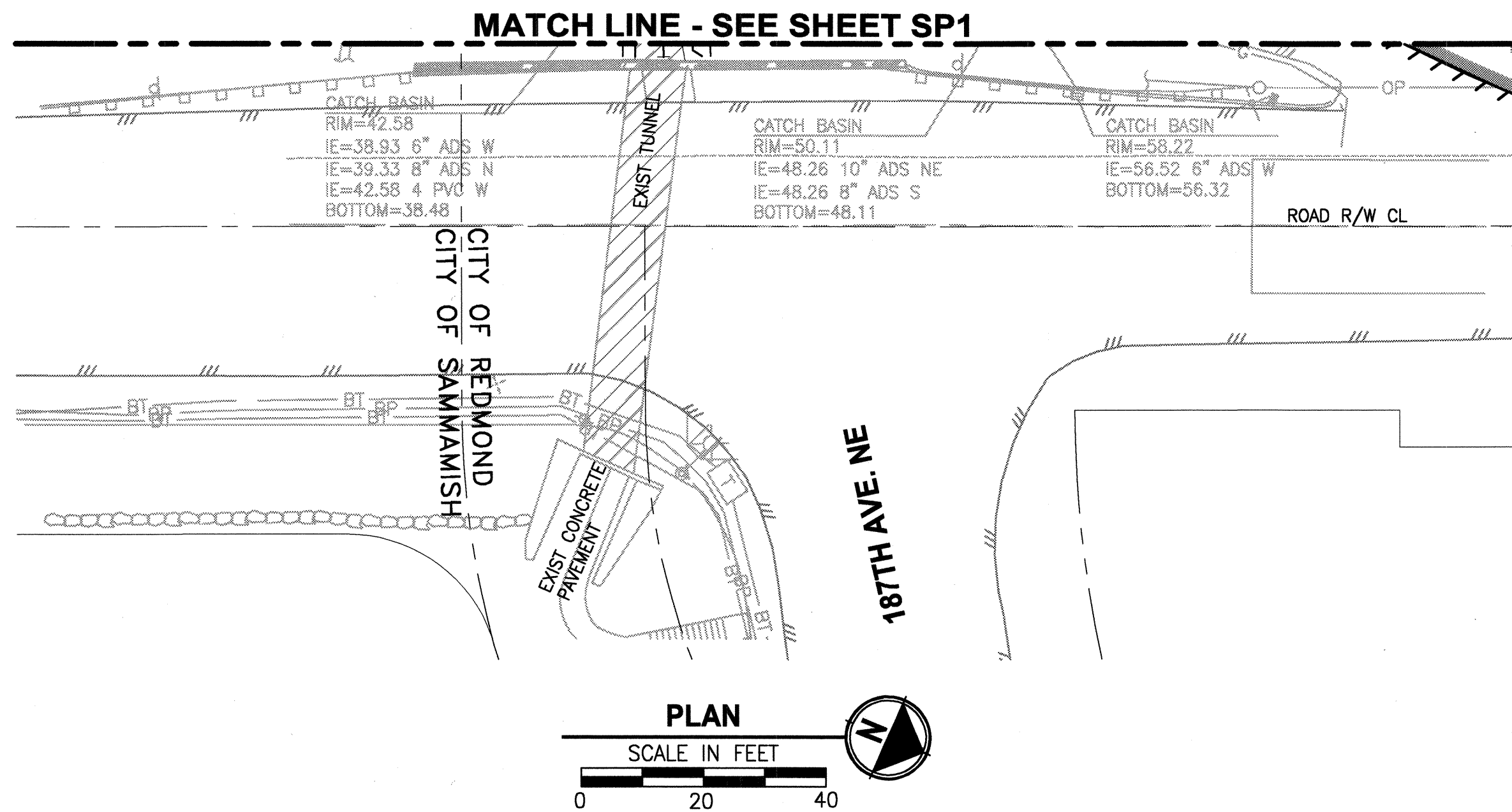
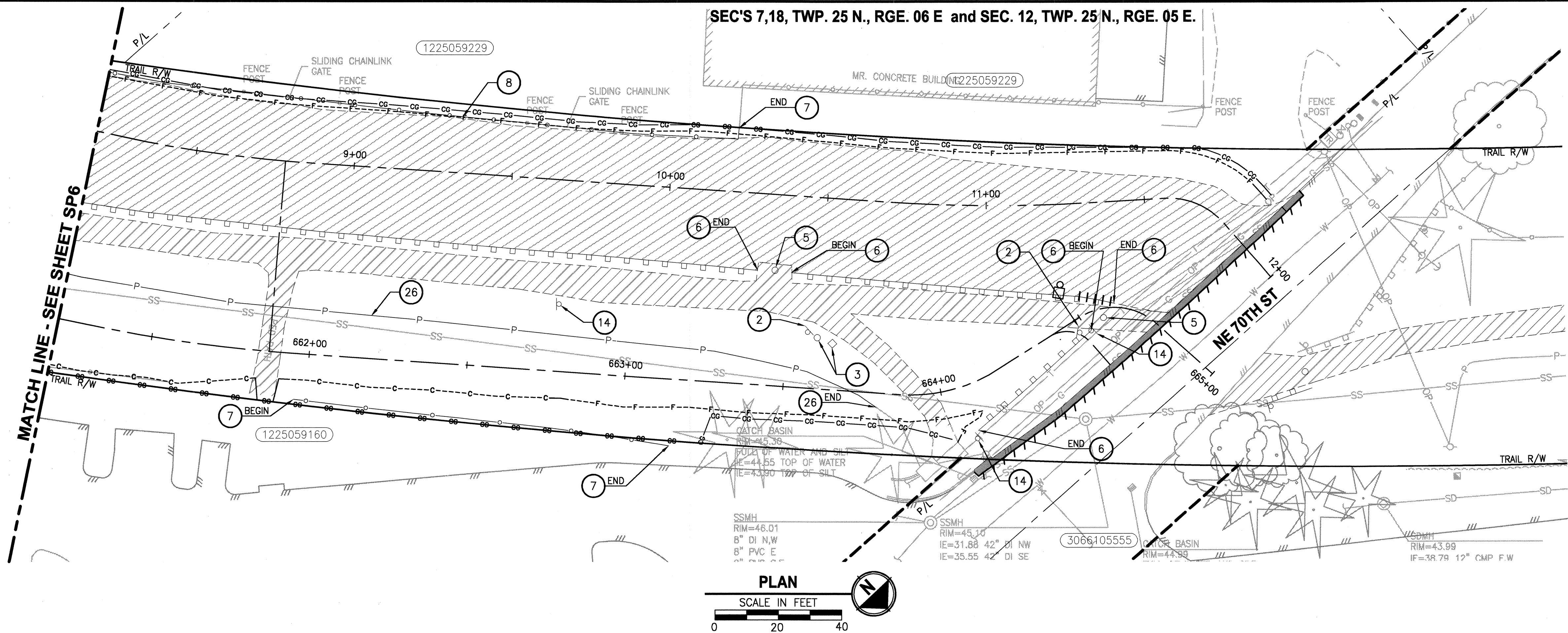
**Parametrix**  
ENGINEERING · PLANNING · ENVIRONMENTAL SCIENCES  
411 108TH AVENUE N.E., SUITE 1000  
BELLEVUE, WASHINGTON 98004  
T. 425.458.6200 F. 425.458.6363  
www.parametrix.com

PROJECT NAME  
**EAST LAKE SAMMAMISH  
MASTER PLAN TRAIL, REDMOND SEGMENT**  
187TH AVENUE NE TO NE 70TH STREET

SITE PREPARATION PLAN



DATE: Dec 16, 2010 - 3:34pm PLOTTED BY: purgaut IMAGES: XREF: S: XBL1521075P12T01-10k | XBL1521075P12T01-DE | XBL1521075P12T01-BA-North | XBL1521075P12T01-RW | XBL1521075P12T01-PR | XBL1521075P12T01-SHT-LAYOUT | XBL1521075P12T01-BA520 | SP-NOTES | XBL1521075-ADDITIONAL



#### FENCE REMOVAL/RELOCATION SCHEDULE

ALIGNMENT	BEGIN RELOCATION STATION	OFFSET	END STATION	OFFSET	NOTE
A-LINE	604+40	3 LT	604+65	5 LT	SPLIT RAIL
A-LINE	604+50	10 RT	604+79	21 RT	SPLIT RAIL
A-LINE	604+94	13 LT	605+13	5 LT	SPLIT RAIL
A-LINE	605+28	3 LT	606+62	3 LT	SPLIT RAIL
A-LINE	606+62	3 LT	634+02	1 LT	SPLIT RAIL
A-LINE	618+66	10 RT	624+20	11 RT	SPLIT RAIL
A-LINE	634+02	1 LT	637+84	6 LT	SPLIT RAIL
A-LINE	638+34	6 LT	641+01	9 LT	SPLIT RAIL
A-LINE	640+93	7 RT	640+93	13 RT	SPLIT RAIL
A-LINE	641+43	8 LT	647+93	16 LT	SPLIT RAIL
A-LINE	641+50	7 RT	641+48	15 RT	SPLIT RAIL
A-LINE	646+17	8 RT	647+48	10 RT	WOOD GUARDRAIL
A-LINE	648+65	4 RT	649+28	8 RT	WOOD GUARDRAIL
A-LINE	648+65	5 RT	648+64	9 RT	SPLIT RAIL
A-LINE	658+56	78 LT	663+31	80 LT	CHAIN LINK
A-LINE	661+95	15 RT	663+15	20 RT	CHAIN LINK
A-LINE	660+82	36 LT	663+40	36 LT	WOOD GUARDRAIL
A-LINE	663+50	36 LT	664+62	1 LT	WOOD GUARDRAIL
A-LINE	664+51	5 RT	664+07	15 RT	WOOD GUARDRAIL

#### LEGEND:

- REMOVE OR REGRADE GRAVEL SURFACE
- REMOVE ASPHALT
- REMOVE CONCRETE SIDEWALK
- SAW CUT

#### SITE PREPARATION NOTES:

- RELOCATE SPLIT RAIL FENCE. SEE SCHEDULE ON SP7. SALVAGE & INSTALL IN LOCATION SHOWN ON AL SHEETS. REMOVE EXISTING WETLAND SIGNS AND INSTALL NEW WETLAND SIGNS PROVIDED BY THE OWNER.
- RELOCATE SIGN. SEE PS SHEETS FOR NEW LOCATION.
- RELOCATE TRASH CAN & REMOVE TRASH BAG DISPENSER. SEE PS SHEETS FOR NEW LOCATION.
- REMOVE ASPHALT PAD & RELOCATE PORTABLE RESTROOM. SEE AL SHEETS FOR NEW LOCATION.
- REMOVE BOLLARDS.
- RELOCATE WOOD GUARDRAIL. SEE SCHEDULE ON SP7. SALVAGE AND INSTALL IN LOCATION SHOWN ON AL SHEETS.
- REMOVE CHAIN LINK FENCE. SEE SCHEDULE ON SP7.
- REMOVE CHAIN LINK GATE.
- REMOVE CULVERT. SEE DETAILS ON DD SHEETS.
- NOT USED.
- ADJUST MANHOLE TO FINISHED GRADE.
- NOT USED.
- NOT USED.
- REMOVE SIGN.
- NOT USED.
- REMOVE SPLIT RAIL FENCE.
- RELOCATE WOOD GUARD RAIL.
- SEE TP SHEETS FOR TREE REMOVALS BEYOND CLEARING AND GRUBBING LIMITS. TREES SHALL BE FLAGGED AND APPROVED BY THE ENGINEER PRIOR TO REMOVAL.
- REMOVE GATE POSTS AND GATE.
- ABANDON TELEMETRY FOR SEWER FLOW MONITORING. INSTALL NEW METER BOX PER AL PLANS. COORDINATE WITH THE KC PROJECT REPRESENTATIVE.
- NOT USED.
- NOT USED.
- NOT USED.
- RELOCATE MAILBOX. SEE PS SHEETS FOR NEW LOCATION.
- RELOCATE POWER LINE. SEE AL SHEETS FOR NEW LOCATION.
- NOT USED.
- REMOVE TRAFFIC ARROW.
- REMOVE RAISED PAVEMENT MARKER.
- NOT USED.

THIS DEVELOPMENT SHALL BE CONSTRUCTED IN ACCORDANCE WITH THE CITY OF REDMOND STANDARD SPECIFICATIONS AND DETAILS, 2011 EDITION

APPROVED FOR CONSTRUCTION	PLAN CHK ENGR
FOR: WILLIAM J. CAMPBELL	STORM
DIRECTOR OF PUBLIC WORKS	UTILITY
CITY OF REDMOND	FIRE DEPT
	TRANS / ENGR
DATE: 1-18-2011	PLANNING DEPT

THIS APPROVAL IS FOR THE DESIGN CONCEPT ONLY. THESE PLANS APPEAR TO BE IN CONFORMANCE WITH THE CITY OF REDMOND DESIGN STANDARDS FOR CONSTRUCTION. THIS APPROVAL SHALL NOT BE CONSTRUED AS AUTHORIZING CONSTRUCTION NOT IN ACCORDANCE WITH APPLICABLE CITY STANDARDS. THE CITY RESERVES THE RIGHT TO REQUIRE REVISIONS TO THE APPROVED PLANS TO ASSURE CONFORMANCE WITH CITY OF REDMOND DESIGN STANDARDS FOR CONSTRUCTION AT ANY TIME THAT IT IS DISCOVERED THAT THE PROPOSED CONSTRUCTION DOES NOT OTHERWISE MEET THE APPLICABLE CONSTRUCTION STANDARDS. THE OWNER IS REQUIRED TO PROVIDE REVISIONS AND PLANS IN ACCORDANCE WITH APPLICABLE CITY STANDARDS AND ASSURES THAT CONSTRUCTION IS ACCOMPLISHED IN ACCORDANCE WITH THOSE STANDARDS. THE OWNER AND/OR DESIGN ENGINEER AND/OR DEVELOPER MAY BE REQUIRED TO MAKE NECESSARY APPROVED FIELD REVISIONS TO CORRECT ANY ERRORS OR OMISSIONS FOUND ON THE APPROVED PLAN.

11-0169

DRAWING NO.  
20 OF 72

SP7

REVISIONS	DATE	BY	DESIGNED
			Y. HO
			DRAWN
			B. PURGANAN
			CHECKED
			H. LONGFELLOW
			APPROVED

ONE INCH AT FULL SCALE.  
IF NOT, SCALE ACCORDINGLY

FILE NAME  
BL1521075P12T01SP1-7

JOB No.  
554-1521-075

DATE  
DECEMBER 2010



Parametrix

411 108TH AVENUE N.E., SUITE 1000  
BELLEVUE, WASHINGTON 98004  
T. 425.458.6200 F. 425.458.6363  
www.parametrix.com

ENGINEERING · PLANNING · ENVIRONMENTAL SCIENCES

PROJECT NAME

EAST LAKE SAMMAMISH  
MASTER PLAN TRAIL, REDMOND SEGMENT

187TH AVENUE NE TO NE 70TH STREET

SITE PREPARATION PLAN