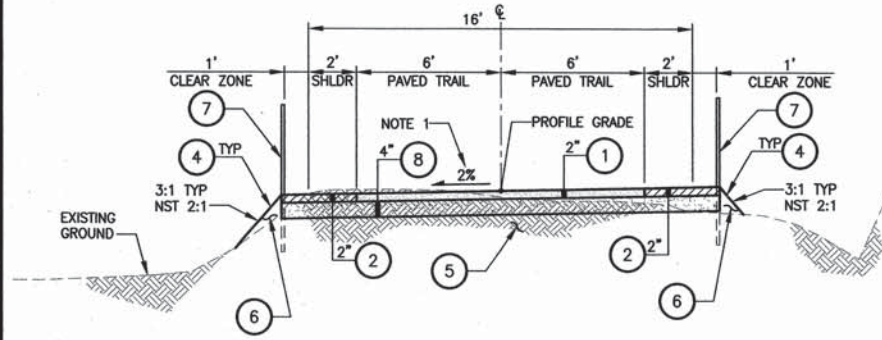
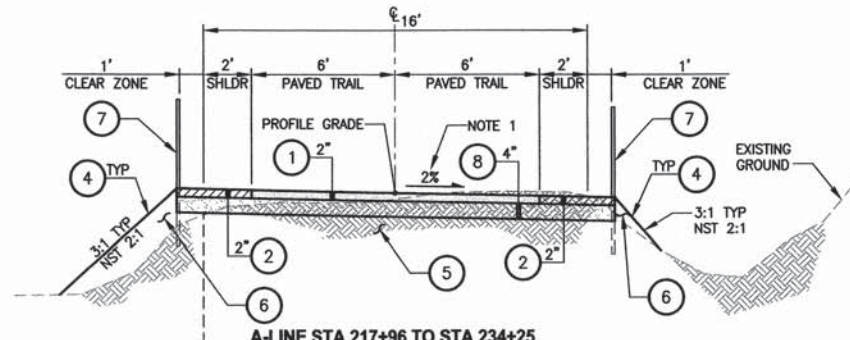


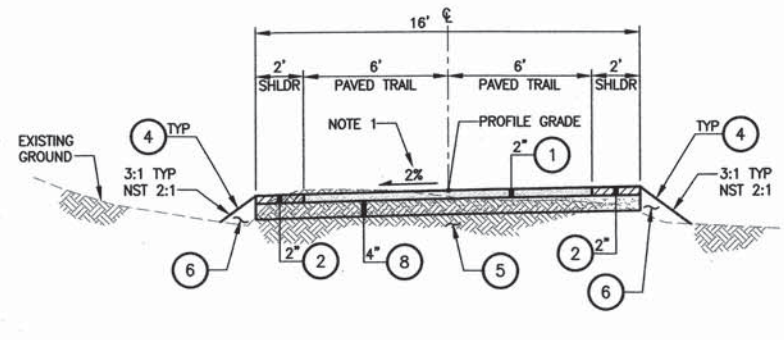
SEC'S 8, 17 TWP. 24 N., RGE. 06 E, W.M.



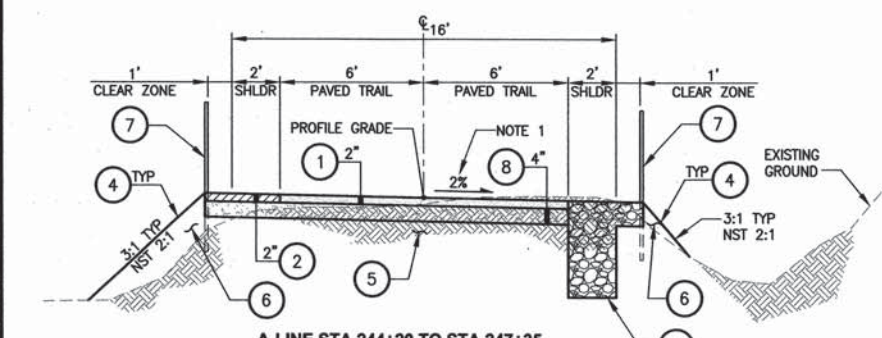
A-LINE STA 216+78 TO STA 217+96
TYPICAL SECTION A
NO SCALE



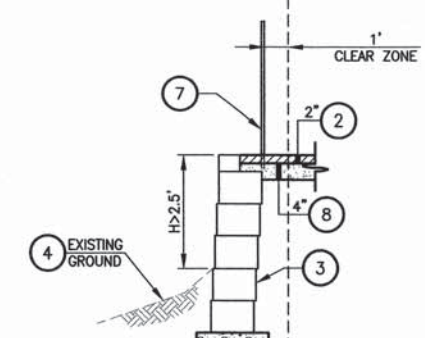
A-LINE STA 217+96 TO STA 234+25
A-LINE STA 239+13 TO STA 244+20
TYPICAL SECTION B
NO SCALE



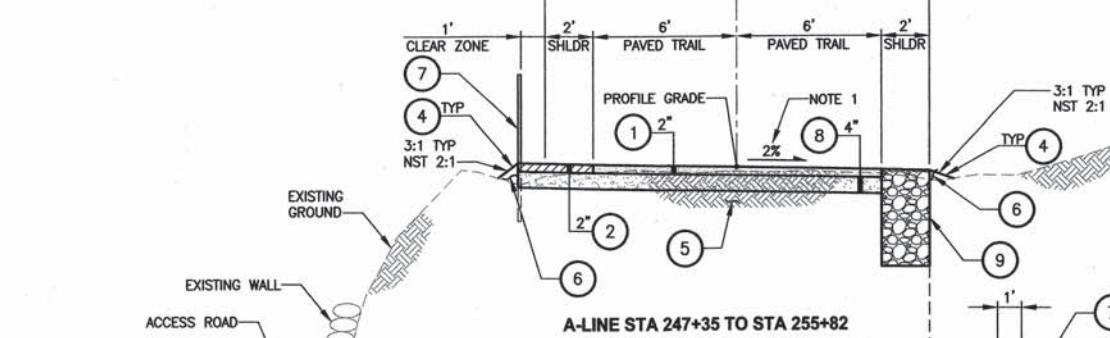
A-LINE STA 234+25 TO STA 239+13
TYPICAL SECTION C
NO SCALE



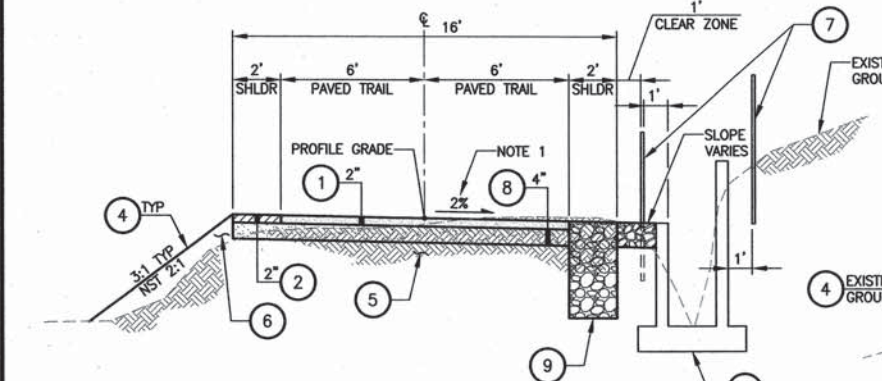
A-LINE STA 244+20 TO STA 247+35
A-LINE STA 255+82 TO STA 258+98
A1-LINE STA 40+00 TO STA 40+15
A1-LINE STA 42+06 TO STA 42+35
A-LINE STA 261+32 TO STA 282+64
TYPICAL SECTION D
NO SCALE



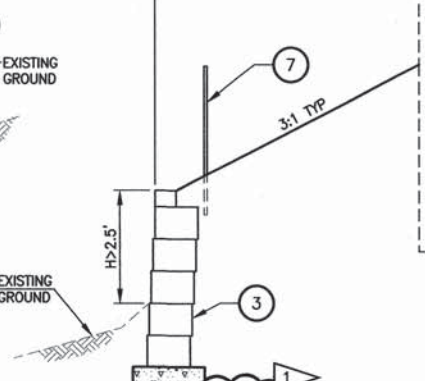
A-LINE STA 230+52 TO STA 234+06
A-LINE STA 239+47 TO STA 240+19
FILL SECTION WITH RETAINING WALL
(WALLS #4, #5A, #6, #7)



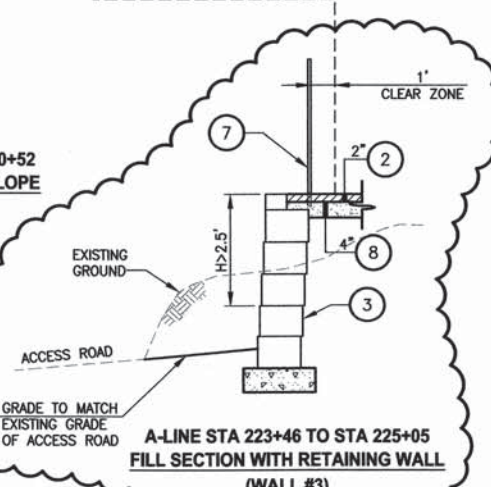
A-LINE STA 247+35 TO STA 255+82
TYPICAL SECTION E
NO SCALE



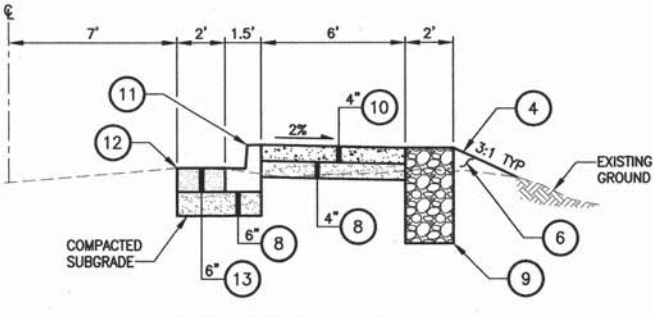
A1-LINE STA 40+15 TO STA 42+06
TYPICAL SECTION F
NO SCALE



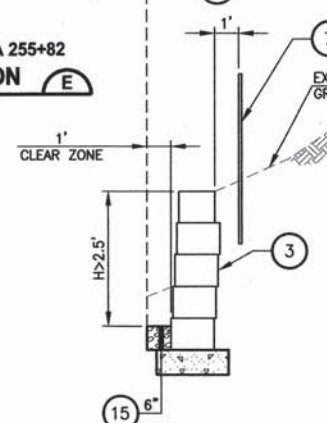
A-LINE STA 225+05 TO STA 230+52
FILL SECTION WITH 3:1 SIDESLOPE
AND RETAINING WALL
(WALL #5)



A-LINE STA 223+46 TO STA 225+05
FILL SECTION WITH RETAINING WALL
(WALL #3)



SIDEWALK AT SE 33RD ST
C-LINE STA 10+85 TO STA 11+77
TYPICAL SECTION G
NO SCALE



A-LINE STA 248+05 TO STA 249+40
CUT SECTION WITH RETAINING WALL
(WALL #8)

SIDE SLOPE SCHEDULE

ALIGNMENT	STA START	STA END	LEFT SIDE OF TRAIL
A-LINE	216+78.60	217+39.00	2:1
A-LINE	217+39.00	218+16.00	3:1
A-LINE	218+16.00	218+86.00	2:1
A-LINE	218+86.00	223+46.50	3:1
A-LINE	223+46.00	225+05.00	WALL
A-LINE	225+05.00	230+51.50	3:1 FOR 9' AND WALL
A-LINE	230+51.50	234+05.50	WALL
A-LINE	234+05.50	234+31.20	2:1
A-LINE	234+31.20	239+47.20	3:1
A-LINE	239+47.20	240+19.20	WALL
A-LINE	240+19.20	244+18.00	3:1
A-LINE	244+18.00	245+10.00	2:1
A-LINE	245+10.00	258+98.00	3:1
A1-LINE	040+00.00	040+15.00	3:1
A1-LINE	040+15.00	042+07.00	2:1
A1-LINE	042+07.00	042+34.90	3:1
A-LINE	261+31.96	282+71.00	3:1

SIDE SLOPE SCHEDULE

ALIGNMENT	STA START	STA END	RIGHT SIDE OF TRAIL
A-LINE	216+78.60	217+00.00	2:1
A-LINE	217+00.00	218+16.00	3:1
A-LINE	218+16.00	218+86.00	1:1
A-LINE	218+86.00	241+07.00	3:1
A-LINE	241+07.00	241+13.00	2:1
A-LINE	241+13.00	247+12.00	3:1
A-LINE	247+12.00	247+26.00	2:1
A-LINE	247+26.00	248+05.00	3:1
A-LINE	248+05.00	249+40.00	WALL
A-LINE	249+40.00	258+98.00	3:1
A1-LINE	040+00.00	040+15.00	3:1
A1-LINE	040+15.00	042+07.00	VARIES
A1-LINE	042+07.00	042+34.90	3:1
A-LINE	261+31.96	262+05.00	3:1
A-LINE	262+05.00	262+85.00	2:1
A-LINE	262+85.00	282+71.00	3:1

CONSTRUCTION NOTES:

- HMA CL. 3/8" PG 64-22.
- 5/8" MINUS CRUSHED LEDGE ROCK, 100% FRACTURED. SEE SPECIAL PROVISIONS FOR SPECIFICATIONS.
- STRUCTURAL EARTH WALL. SEE AL PLANS FOR LOCATIONS. SEE WP SHEETS FOR WALL PROFILES. SEE SHEET WD1 FOR DETAILS.
- SEE SLOPE RESTORATION DETAILS ON LA SHEETS.
- EXISTING BALLAST BASE.
- SELECT BORROW INCL. HAUL.
- SPLIT RAIL FENCE OR COATED CHAIN LINK FENCE TYPE 6. SEE AL PLANS FOR LOCATIONS AND TYPES AND SEE DETAILS ON SHEET MD3 AND IN APPENDIX B OF SPECIFICATIONS.
- CRUSHED SURFACING BASE COURSE.
- INFILTRATION TRENCH OR SEE AL PLANS FOR LOCATIONS.
- CEMENT CONCRETE SIDEWALK PER WSDOT STD PLAN F-30.10-03. SEE DETAILS IN APPENDIX B OF SPECIFICATIONS.
- CEMENT CONCRETE TRAFFIC CURB AND CUTTER PER WSDOT STD PLAN F-10.12-03. SEE DETAILS IN APPENDIX B OF SPECIFICATIONS.
- SAWCUT.
- HMA CL. 1/2" PG 64-22.
- NOT USED.
- 3/4" CRUSHED CLEAN ROCK.
- CONCRETE CHANNEL (5 DDT) AND SHEET SD2.

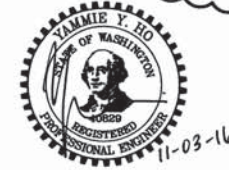
GENERAL NOTE:

- SEE DP SHEETS FOR CROSS SLOPE TRANSITIONS AND GRADE BREAKS.
- APPLY SOIL RESIDUAL HERBICIDE 18-FOOT WIDTH TO THE SURFACE OF THE TRAIL CRUSHED SURFACING BASE COURSE PRIOR TO HMA PAVING. HERBICIDE SHALL BE A TYPE APPROVED BY THE CITY OF SAMMAMISH.

PLOTTED BY: purgobut DATE: Thursday, November 03, 2016 11:21:49 AM
 PATH: U:\PSO\Projects\Clients\1521-Kingco\564-1521-075-ELST\985vea\CADD\Phase 20\Task 03\DWG\

REVISIONS	DATE	BY	DESIGNED
1	4/6/16	JJ	J. JUN
2	11/7/16	JJ	B. PURGANAN

ONE INCH AT FULL SCALE, IF NOT, SCALE ACCORDINGLY
 FILE NAME: BL1521075P20T03CS-01
 JOB No: 554-1521-075 P20T03
 DATE: JANUARY 2016



Parametrix
 ENGINEERING · PLANNING · ENVIRONMENTAL SCIENCES
 719 2ND AVENUE, SUITE 200 | SEATTLE, WA 98104
 P 206.394.3700
 WWW.PARAMETRIX.COM

PROJECT NAME
EAST LAKE SAMMAMISH MASTER PLAN TRAIL SOUTH SAMMAMISH SEGMENT A
 SAMMAMISH, WA

DPER ACTIVITY NUMBER
 GRDE14-0052 / SHORE14-0022
 FEDERAL AID # CM-2017(133)

TYPICAL CROSS SECTIONS

CITY OF SAMMAMISH APPROVAL

 City Engineer

 Community Development