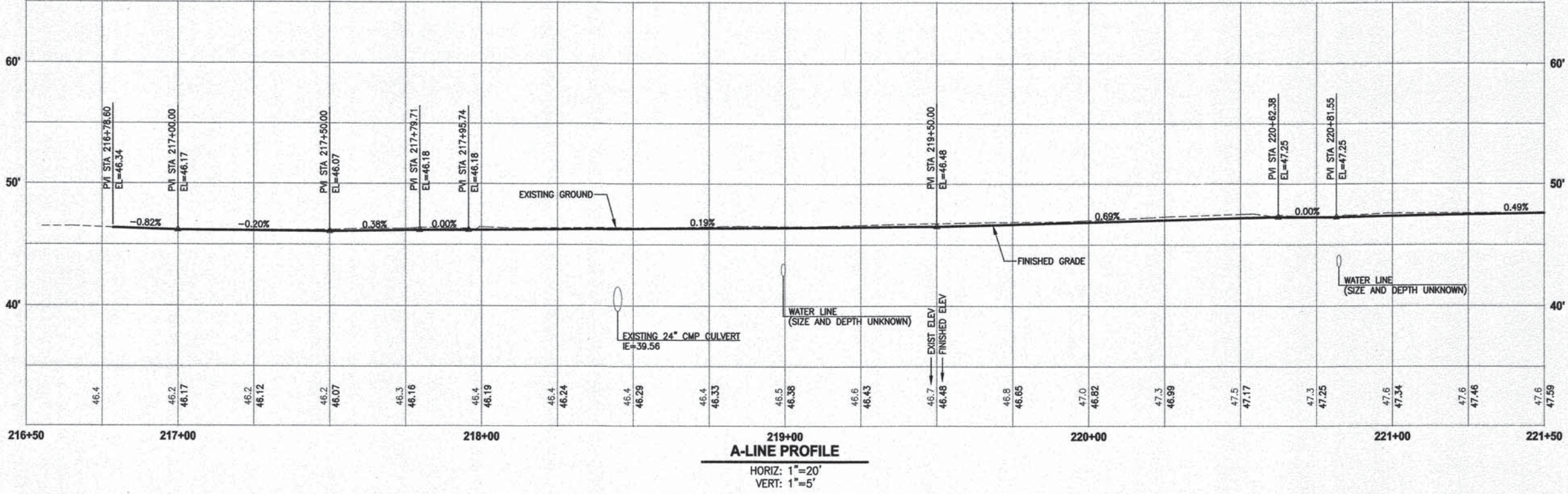


- CIVIL CONSTRUCTION NOTES:**
1. INSTALL STRUCTURAL EARTH WALL. SEE WALL DETAILS ON SHEET WD1. SEE WALL PROFILES ON WP SHEETS.
 2. INSTALL COATED CHAIN LINK FENCE TYPE 6. FOR GROUND POST INSTALLATION SEE APPENDIX B IN THE SPECIFICATIONS. SEE SHEET WD1 FOR INSTALLATION ON TOP OF WALL.
 3. INSTALL CHAIN LINK CANTILEVER GATE, SEE DETAIL ON SHEET MD2.
 4. INSTALL SPLIT RAIL FENCE, SEE DETAILS ON SHEET MD3.
 5. INSTALL PATTERNED CONCRETE INTERSECTION, SEE DETAILS ON SHEET MD2 AND DP SHEETS.
 6. CEMENT CONCRETE DRIVEWAY APPROACH. SEE DP SHEETS.
 7. INSTALL ROCKERY, SEE DETAILS ON DP AND MD SHEETS.
 8. WALL DRAIN OUTFALL LOCATION. SEE SHEET WD1.
 9. CEMENT CONCRETE TRAFFIC CURB AND GUTTER PER WSDOT STD PLAN F-10.12-03. SEE DETAILS IN APPENDIX B OF SPECIFICATIONS.
 10. PARALLEL CURB RAMP PER WSDOT STD PLAN F-40.12-02. SEE DETAILS IN APPENDIX B OF SPECIFICATIONS.
 11. INSTALL EXTRUDED CURB TYPE 5 PER WSDOT STD PLAN F-10.42-00. SEE DETAILS IN APPENDIX B OF SPECIFICATIONS.
 12. INSTALL WOOD GUARDRAIL, SEE DETAILS ON SHEET MD3.
 13. NOT USED.
 14. INSTALL REST STOP TYPE 1, SEE DETAILS ON SHEET MD3.
- STORMWATER CONSTRUCTION NOTES:**
1. CONCRETE HEADWALL, SEE DETAILS ON SHEET DD1 AND WP SHEETS.
 2. ROCK PAD, SEE DETAIL 2 ON SHEET DD1 AND WP SHEETS.
 3. LOCATE PIPE END. REMOVE PIPE CAP END AND INSTALL PIPE JOINT CONNECTION PER 1 DD2.
 4. INFILTRATION TRENCH, SEE DETAIL 3 ON SHEET DD1.
 5. CONCRETE CHANNEL, SEE DD1 FOR DETAILS AND SD2 FOR PROFILE.
 6. PLUGGING EXISTING PIPE.
- GENERAL NOTES:**
1. SEE DP SHEETS FOR DRIVEWAY PLAN AND PROFILE AND ROCKERY LOCATIONS.
 2. SEE SD AND DD SHEETS FOR DETAILS RELATED TO STORM DRAIN STRUCTURES, PIPES AND DITCH.
 3. SEE SHEET G4 FOR SYMBOL AND LINE LEGEND.
 4. ALL EXISTING TREES CALLED OUT TO BE REMOVED ARE NOT SHOWN ON AL SHEETS. FOR CLARITY, SEE SP SHEETS FOR ALL EXISTING TREES.



REVISIONS	DATE	BY	DESIGNED
1	ADDENDUM #3	5/17/16	JJ
			DESIGNED J. JUN
			DRAWN B. PURGANAN
			CHECKED Y. HO
			APPROVED O. KIKUTA

ONE INCH AT FULL SCALE, IF NOT, SCALE ACCORDINGLY.
FILE NAME: BL1521075P20T03AL-01
JOB NO. 554-1521-075 P20T03
DATE JANUARY 2016



Parametrix
ENGINEERING, PLANNING, ENVIRONMENTAL SCIENCES
719 2ND AVENUE, SUITE 200 | SEATTLE, WA 98104
P 206.394.3700
WWW.PARAMETRIX.COM

PROJECT NAME
**EAST LAKE SAMMAMISH
MASTER PLAN TRAIL
SOUTH SAMMAMISH SEGMENT A**
SAMMAMISH, WA

DPER ACTIVITY NUMBER
GRDE14-0052 / SHORE14-0022
FEDERAL AID # CM-2017(133)

CITY OF SAMMAMISH APPROVAL
City Engineer: [Signature] Date: 11-10-16
Community Development: [Signature] Date: 11-10-16

PLAN AND PROFILE

SHEET NO.
26 OF 78
AL1



HORIZ: 1"=20'
VERT: 1"=5'

JA

719 2ND AVENUE, SUITE 200 | SEATTLE, WA 98104
P 206.394.3700
WWW.PARAMETRIX.COM

**EAST LAKE SAMMAMISH
MASTER PLAN TRAIL
SOUTH SAMMAMISH SEGMENT A**

SAMMAMISH, WA

DPER ACTIVITY NUMBER
GRDE14-0052 / SHORE14-0022
FEDERAL AID # CM-2017(133)

PLAN AND PROFILE

SHEET NO.
7 OF 78

AL2

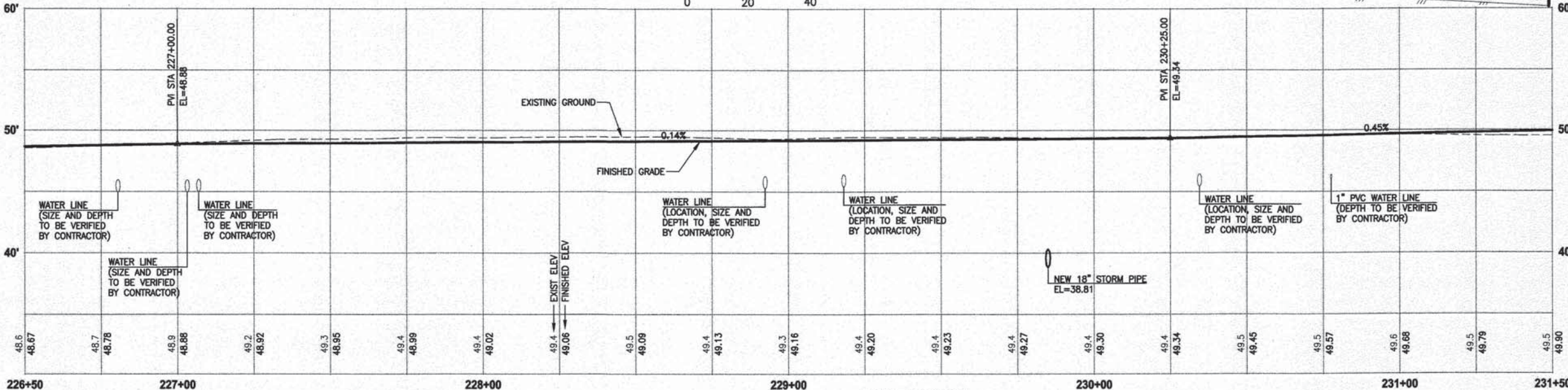
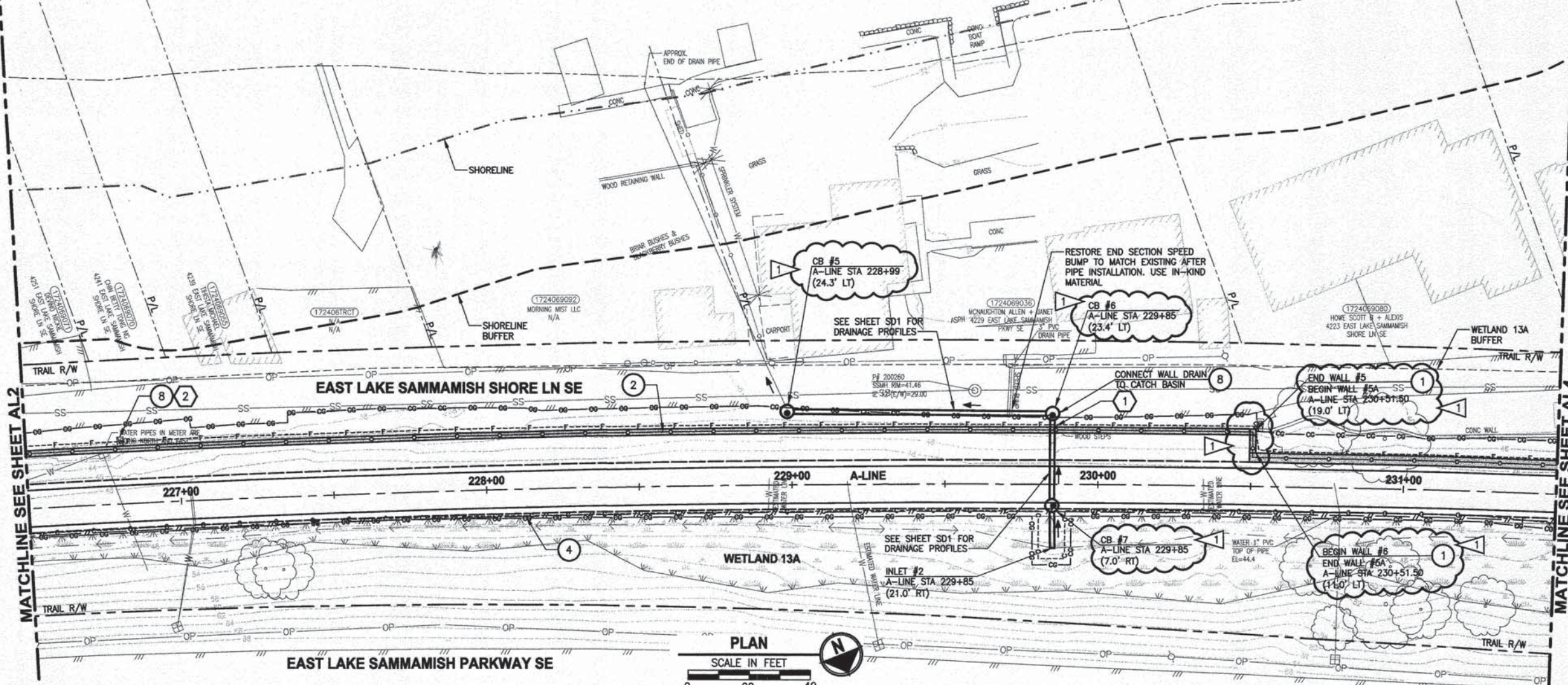
1. SEE DP SHEETS FOR DRIVEWAY PLAN AND PROFILE AND ROCKERY LOCATIONS.
2. SEE SD AND DD SHEETS FOR DETAILS RELATED TO STORM DRAIN STRUCTURES, PIPES AND DITCH.
3. SEE SHEET G4 FOR SYMBOL AND LINE LEGEND.
4. ALL EXISTING TREES CALLED OUT TO BE REMOVED ARE NOT SHOWN ON AL SHEETS. FOR CLARITY, SEE SP SHEETS FOR ALL EXISTING TREES.

CITY OF SAMMAMISH APPROVAL

	
Mr. Prasad	Mr. Prasad

City Engineer Lambert M. Smith Date 11-10-16
Community Development Date

SHEET 1
27 OF 27



A-LINE PROFILE
HORIZ: 1"=20'
VERT: 1"=5'

CIVIL CONSTRUCTION NOTES:



1. INSTALL STRUCTURAL EARTH WALL. SEE WALL DETAILS ON SHEET WD1. SEE WALL PROFILES ON WP SHEETS.
2. INSTALL COATED CHAIN LINK FENCE TYPE 6. FOR GROUND POST INSTALLATION SEE APPENDIX B IN THE SPECIFICATIONS. SEE SHEET WD1 FOR INSTALLATION ON TOP OF WALL.
3. INSTALL CHAIN LINK CANTILEVER GATE, SEE DETAIL ON SHEET MD2.
4. INSTALL SPLIT RAIL FENCE, SEE DETAILS ON SHEET MD3.
5. INSTALL PATTERNED CONCRETE INTERSECTION, SEE DETAILS ON SHEET MD2 AND DP SHEETS.
6. CEMENT CONCRETE DRIVEWAY APPROACH. SEE DP SHEETS.
7. INSTALL ROCKERY. SEE DETAILS ON DP AND MD SHEETS.
8. WALL DRAIN OUTFALL LOCATION. SEE SHEET WD1.
9. CEMENT CONCRETE TRAFFIC CURB AND GUTTER PER WSDOT STD PLAN F-10.12-03. SEE DETAILS IN APPENDIX B OF SPECIFICATIONS.
10. PARALLEL CURB RAMP PER WSDOT STD PLAN F-40.12-02. SEE DETAILS IN APPENDIX B OF SPECIFICATIONS.
11. INSTALL EXTRUDED CURB TYPE 5 PER WSDOT STD PLAN F-10.42-00. SEE DETAILS IN APPENDIX B OF SPECIFICATIONS.
12. INSTALL WOOD GUARDRAIL, SEE DETAILS ON SHEET MD3.
13. NOT USED.
14. INSTALL REST STOP TYPE 1, SEE DETAILS ON SHEET MD3.

STORMWATER CONSTRUCTION NOTES:

1. CONCRETE HEADWALL, SEE DETAILS ON SHEET DD1 AND WP SHEETS.
2. ROCK PAD, SEE DETAIL 2 ON SHEET DD1 AND WP SHEETS.
3. LOCATE PIPE END. REMOVE PIPE CAP END AND INSTALL PIPE JOINT CONNECTION PER DD2.
4. INFILTRATION TRENCH, SEE DETAIL 3 ON SHEET DD1.
5. CONCRETE CHANNEL, SEE DD1 FOR DETAILS AND SD2 FOR PROFILE.
6. PLUGGING EXISTING PIPE.

GENERAL NOTES:

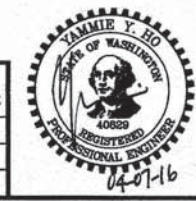
1. SEE DP SHEETS FOR DRIVEWAY PLAN AND PROFILE AND ROCKERY LOCATIONS.
2. SEE SD AND DD SHEETS FOR DETAILS RELATED TO STORM DRAIN STRUCTURES, PIPES AND DITCH.
3. SEE SHEET G4 FOR SYMBOL AND LINE LEGEND.
4. ALL EXISTING TREES CALLED OUT TO BE REMOVED ARE NOT SHOWN ON AL SHEETS. FOR CLARITY, SEE SP SHEETS FOR ALL EXISTING TREES.

CITY OF SAMMAMISH APPROVAL	
 City Engineer	 Community Development
Date: 11-10-16	Date: 11-10-16

DPER ACTIVITY NUMBER
GRDE14-0052 / SHORE14-0022
FEDERAL AID # CM-2017(133)

REVISIONS	DATE	BY	DESIGNED
1. ADDENDUM #2	4/6/16	CB	J. JUN / C. BUITRAGO
			DRAWN: B. PURGANAN
			CHECKED: Y. HO
			APPROVED: O. KIKUTA

ONE INCH AT FULL SCALE.
IF NOT, SCALE ACCORDINGLY
FILE NAME: BL1521075P20T03AL-01
JOB NO: 554-1521-075 P20T03
DATE: JANUARY 2016

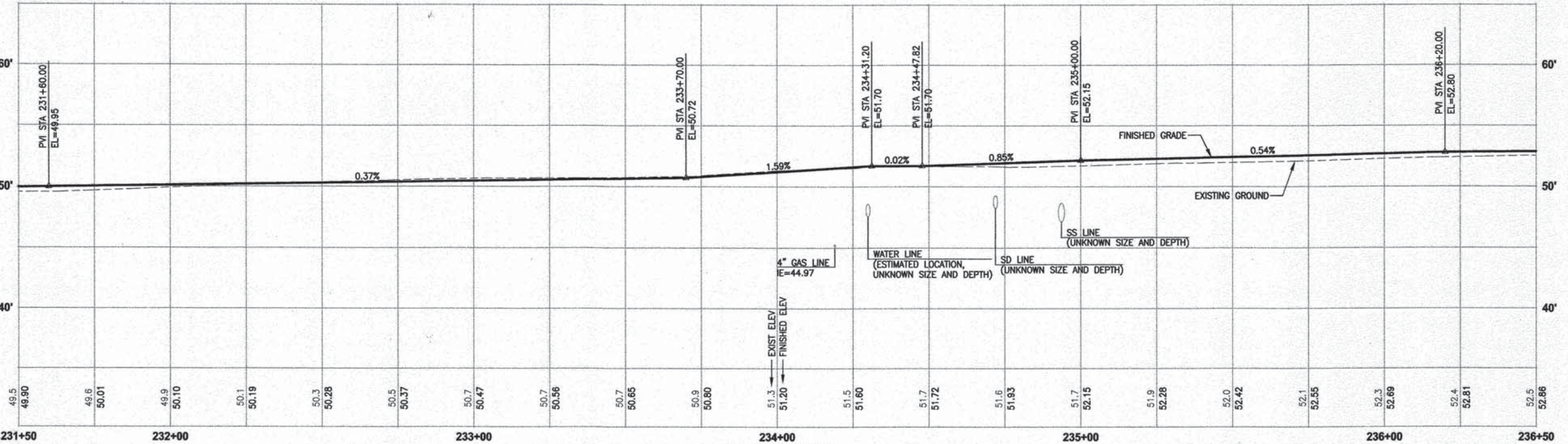
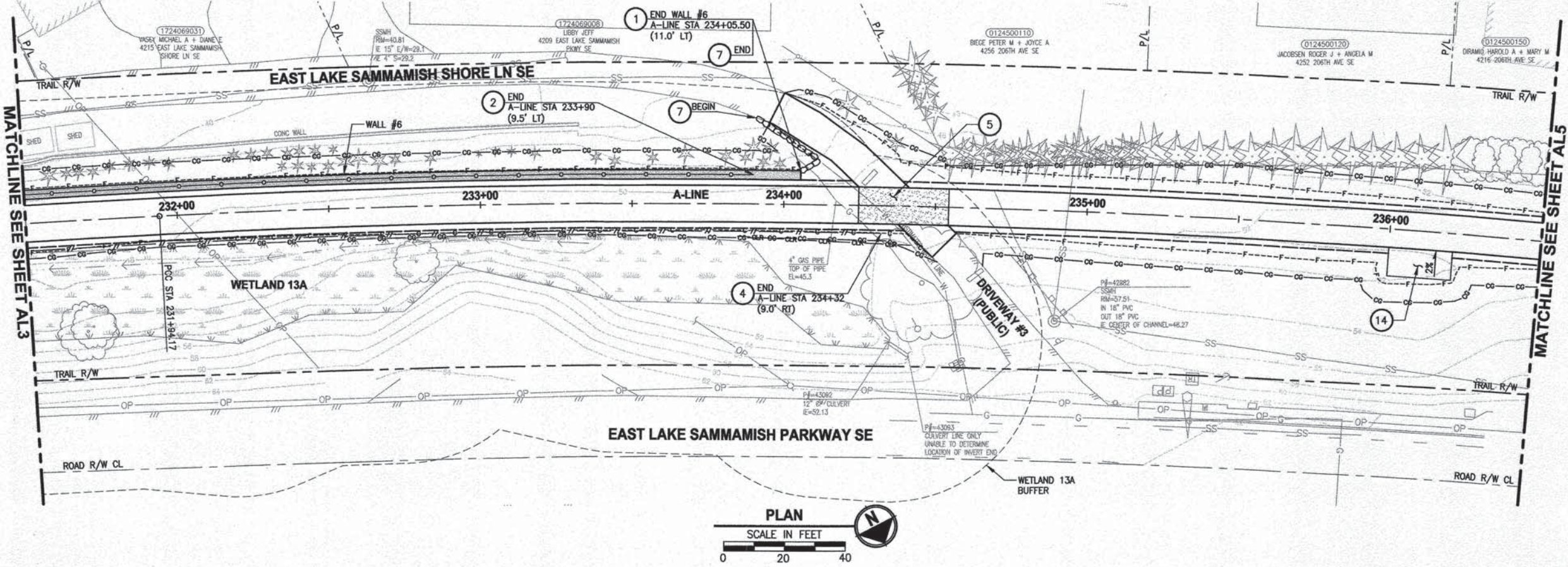


Parametrix
ENGINEERING, PLANNING, ENVIRONMENTAL SCIENCES
719 2ND AVENUE, SUITE 200 | SEATTLE, WA 98104
P 206.394.3700
WWW.PARAMETRIX.COM

PROJECT NAME
**EAST LAKE SAMMAMISH
MASTER PLAN TRAIL
SOUTH SAMMAMISH SEGMENT A**
SAMMAMISH, WA

PLAN AND PROFILE

SHEET NO.
28 OF 78
AL3



A-LINE PROFILE
HORIZ: 1"=20'
VERT: 1"=5'

CIVIL CONSTRUCTION NOTES:

1. INSTALL STRUCTURAL EARTH WALL. SEE WALL DETAILS ON SHEET WD1. SEE WALL PROFILES ON WP SHEETS.
2. INSTALL COATED CHAIN LINK FENCE TYPE 6. FOR GROUND POST INSTALLATION SEE APPENDIX B IN THE SPECIFICATIONS. SEE SHEET WD1 FOR INSTALLATION ON TOP OF WALL.
3. INSTALL CHAIN LINK CANTILEVER GATE. SEE DETAIL ON SHEET MD2.
4. INSTALL SPLIT RAIL FENCE. SEE DETAILS ON SHEET MD3.
5. INSTALL PATTERNED CONCRETE INTERSECTION. SEE DETAILS ON SHEET MD2 AND DP SHEETS.
6. CEMENT CONCRETE DRIVEWAY APPROACH. SEE DP SHEETS.
7. INSTALL ROCKERY. SEE DETAILS ON DP AND MD SHEETS.
8. WALL DRAIN OUTFALL LOCATION. SEE SHEET WD1.
9. CEMENT CONCRETE TRAFFIC CURB AND GUTTER PER WSDOT STD PLAN F-10.12-03. SEE DETAILS IN APPENDIX B OF SPECIFICATIONS.
10. PARALLEL CURB RAMP PER WSDOT STD PLAN F-40.12-02. SEE DETAILS IN APPENDIX B OF SPECIFICATIONS.
11. INSTALL EXTRUDED CURB TYPE 5 PER WSDOT STD PLAN F-10.42-00. SEE DETAILS IN APPENDIX B OF SPECIFICATIONS.
12. INSTALL WOOD GUARDRAIL. SEE DETAILS ON SHEET MD3.
13. NOT USED.
14. INSTALL REST STOP TYPE 1. SEE DETAILS ON SHEET MD3.

STORMWATER CONSTRUCTION NOTES:

1. CONCRETE HEADWALL. SEE DETAILS ON SHEET DD1 AND WP SHEETS.
2. ROCK PAD. SEE DETAIL 2 ON SHEET DD1 AND WP SHEETS.
3. CONNECTION TO DRAINAGE STRUCTURE AND CLEANING EXISTING DRAINAGE STRUCTURE.
4. INFILTRATION TRENCH. SEE DETAIL 3 ON SHEET DD1.
5. CONCRETE CHANNEL. SEE DD1 FOR DETAILS AND SD2 FOR PROFILE.
6. PLUGGING EXISTING PIPE.

GENERAL NOTES:

1. SEE DP SHEETS FOR DRIVEWAY PLAN AND PROFILE AND ROCKERY LOCATIONS.
2. SEE SD AND DD SHEETS FOR DETAILS RELATED TO STORM DRAIN STRUCTURES, PIPES AND DITCH.
3. SEE SHEET G4 FOR SYMBOL AND LINE LEGEND.
4. ALL EXISTING TREES CALLED OUT TO BE REMOVED ARE NOT SHOWN ON AL SHEETS. FOR CLARITY, SEE SP SHEETS FOR ALL EXISTING TREES.

CITY OF SAMMAMISH APPROVAL	
	Date: 11-10-16
City Engineer	
	Date: 11-10-16
Community Development	

DPER ACTIVITY NUMBER
GRDE14-0052 / SHORE14-0022
FEDERAL AID # CM-2017(133)

REVISIONS	DATE	BY	DESIGNED
			J. JUN
			B. PURGANAN
			Y. HO
			O. KIKUTA

ONE INCH AT FULL SCALE.
IF NOT, SCALE ACCORDINGLY
FILE NAME
BL1521075P20T03AL-01
JOB No.
554-1521-075 P20T03
DATE
JANUARY 2016

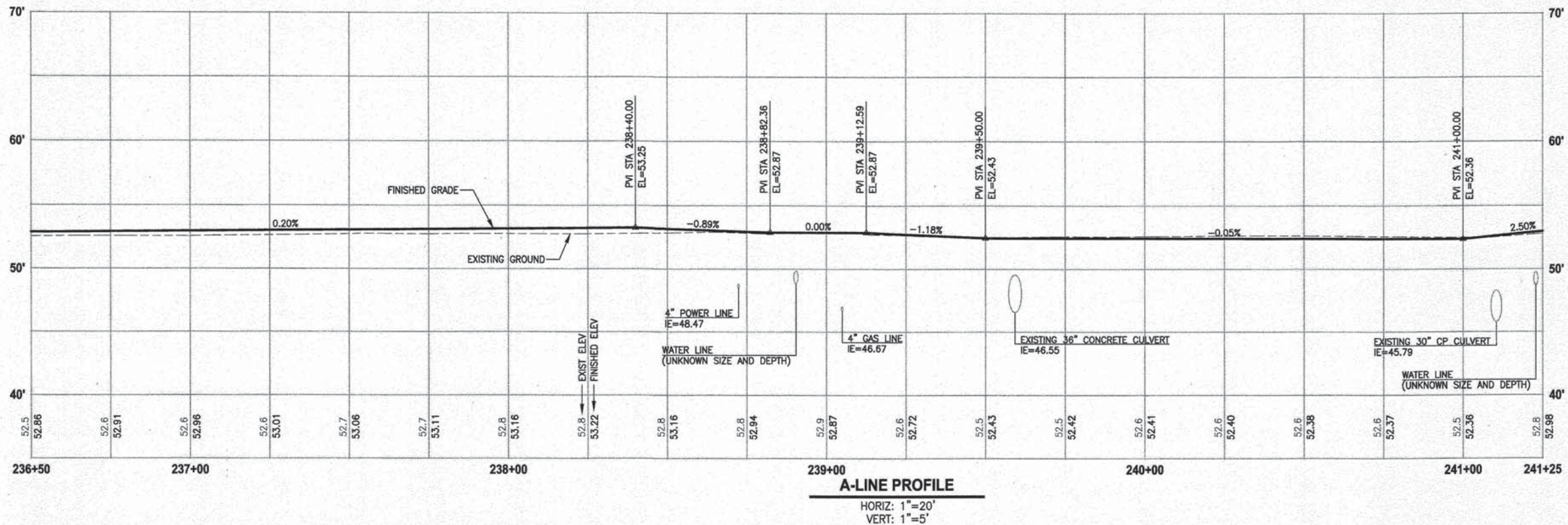


Parametrix
ENGINEERING, PLANNING, ENVIRONMENTAL SCIENCES
719 2ND AVENUE, SUITE 200 | SEATTLE, WA 98104
P 206.394.3700
WWW.PARAMETRIX.COM

PROJECT NAME
**EAST LAKE SAMMAMISH
MASTER PLAN TRAIL
SOUTH SAMMAMISH SEGMENT A**
SAMMAMISH, WA

PLAN AND PROFILE

SHEET NO.
29 OF 78
AL4



- ### STORMWATER CONSTRUCTION NOTES:
- 1 CONCRETE HEADWALL, SEE DETAILS ON SHEET DD1 AND WP SHEETS.
 - 2 ROCK PAD, SEE DETAIL 2 ON SHEET DD1 AND WP SHEETS.
 - 3 CONNECTION TO DRAINAGE STRUCTURE AND CLEANING EXISTING DRAINAGE STRUCTURE.
 - 4 INFILTRATION TRENCH, SEE DETAIL 3 ON SHEET DD1.
 - 5 CONCRETE CHANNEL, SEE DD1 FOR DETAILS AND SD2 FOR PROFILE.
 - 6 PLUGGING EXISTING PIPE.

- ### **GENERAL NOTES:**
1. SEE DP SHEETS FOR DRIVEWAY PLAN AND PROFILE AND ROCKERY LOCATIONS.
 2. SEE SD AND DD SHEETS FOR DETAILS RELATED TO STORM DRAIN STRUCTURES, PIPES AND DITCH.
 3. SEE SHEET G4 FOR SYMBOL AND LINE LEGEND.
 4. ALL EXISTING TREES CALLED OUT TO BE REMOVED ARE NOT SHOWN ON ALL SHEETS. FOR CLARITY, SEE SP SHEETS FOR ALL EXISTING TREES.

ONE INCH AT FULL SCALE.
IF NOT, SCALE ACCORDINGLY

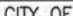









FILE NAME
BL1521075P20T03AL-01

JOB No.
554-1521-075 P20T03

DATE
JANUARY 2016



DPER ACTIVITY NUMBER
GRDE14-0052 / SHORE14-0022
FEDERAL AID # CM-2017(133)

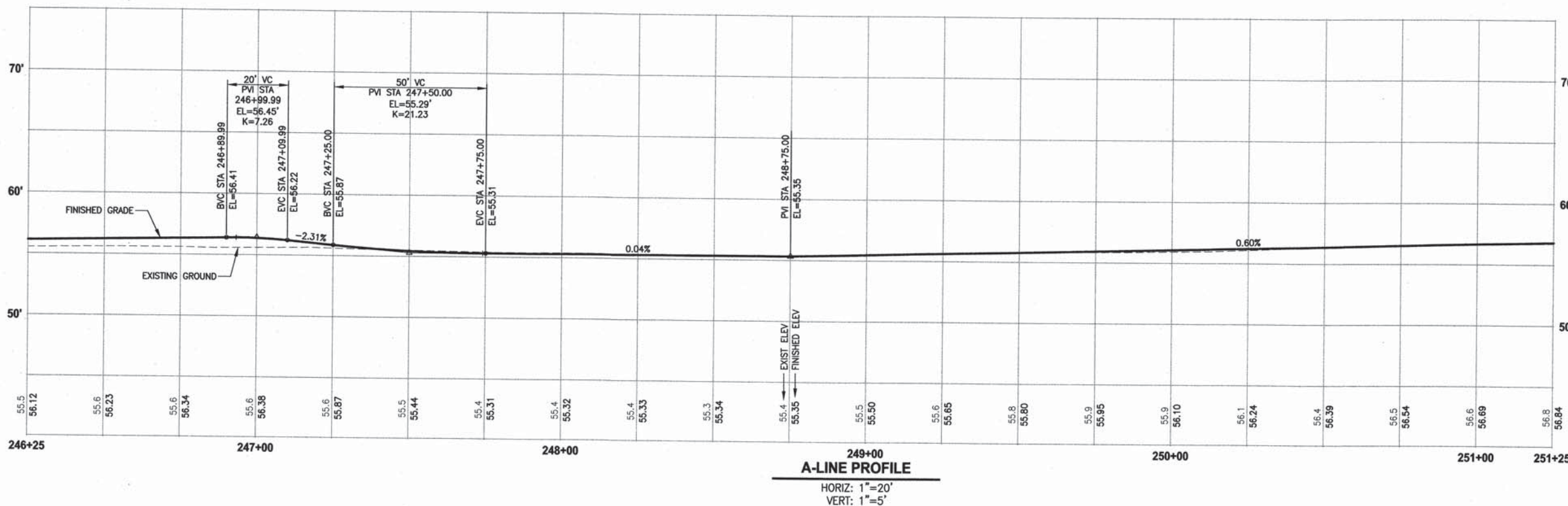
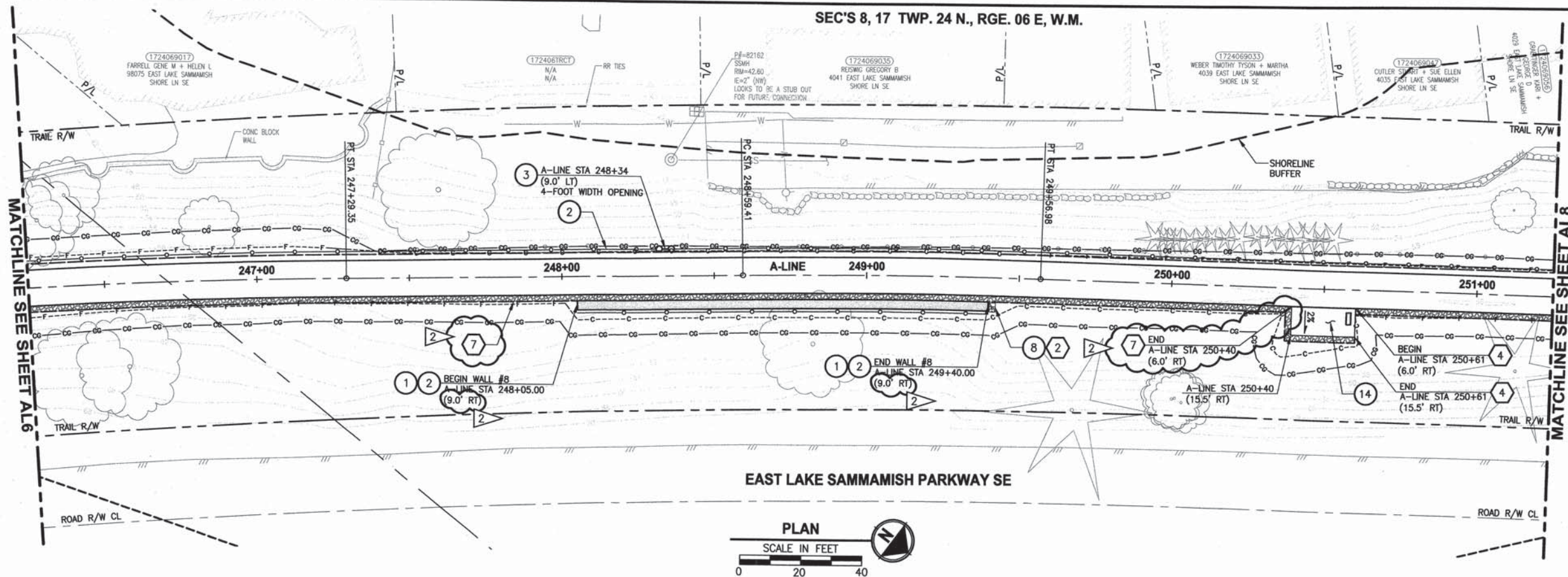
CITY OF SAMMAMISH' APPROVAL	
 City Engineer	 Community Development
 City Engineer	 Community Development
 City Engineer	 Community Development
 City Engineer	 Community Development
 City Engineer	 Community Development

SHEET NO.
30 OF 78

AL5

LAYOUT: AL7
PATH: U:\ISO\Projects\1521-KingCo\54-1821-075-ELST\9550\Phase 20\Task 03\DWG\ PLOTTED BY: purgobut DATE: Thursday, November 03, 2016 11:13:18 AM

SEC'S 8, 17 TWP. 24 N., RGE. 06 E, W.M.



CIVIL CONSTRUCTION NOTES:

1. INSTALL STRUCTURAL EARTH WALL. SEE WALL DETAILS ON SHEET WD1. SEE WALL PROFILES ON WP SHEETS.
2. INSTALL COATED CHAIN LINK FENCE TYPE 6. FOR GROUND POST INSTALLATION SEE APPENDIX B IN THE SPECIFICATIONS. SEE SHEET WD1 FOR INSTALLATION ON TOP OF WALL.
3. INSTALL CHAIN LINK CANTILEVER GATE, SEE DETAIL ON SHEET MD2.
4. INSTALL SPLIT RAIL FENCE, SEE DETAILS ON SHEET MD3.
5. INSTALL PATTERNED CONCRETE INTERSECTION, SEE DETAILS ON SHEET MD2 AND DP SHEETS.
6. CEMENT CONCRETE DRIVEWAY APPROACH. SEE DP SHEETS.
7. INSTALL ROCKERY. SEE DETAILS ON DP AND MD SHEETS.
8. WALL DRAIN OUTFALL LOCATION. SEE SHEET WD1.
9. CEMENT CONCRETE TRAFFIC CURB AND GUTTER PER WSDOT STD PLAN F-10.12-03. SEE DETAILS IN APPENDIX B OF SPECIFICATIONS.
10. PARALLEL CURB RAMP PER WSDOT STD PLAN F-40.12-02. SEE DETAILS IN APPENDIX B OF SPECIFICATIONS.
11. INSTALL EXTRUDED CURB TYPE 5 PER WSDOT STD PLAN F-10.42-00. SEE DETAILS IN APPENDIX B OF SPECIFICATIONS.
12. INSTALL WOOD GUARDRAIL, SEE DETAILS ON SHEET MD3.
13. NOT USED.
14. INSTALL REST STOP TYPE 1, SEE DETAILS ON SHEET MD3.

STORMWATER CONSTRUCTION NOTES:

1. CONCRETE HEADWALL, SEE DETAILS ON SHEET DD1 AND WP SHEETS.
2. ROCK PAD, SEE DETAIL 2 ON SHEET DD1 AND WP SHEETS.
3. LOCATE PIPE END. REMOVE PIPE CAP END AND INSTALL PIPE JOINT CONNECTION PER DD2.
4. INFILTRATION TRENCH, SEE DETAIL 3 ON SHEET DD1.
5. CONCRETE CHANNEL, SEE DD1 FOR DETAILS AND SD2 FOR PROFILE.
6. PLUGGING EXISTING PIPE.
7. INFILTRATION TRENCH A, SEE DETAIL 3A DD1.

GENERAL NOTES:

1. SEE DP SHEETS FOR DRIVEWAY PLAN AND PROFILE AND ROCKERY LOCATIONS.
2. SEE SD AND DD SHEETS FOR DETAILS RELATED TO STORM DRAIN STRUCTURES, PIPES AND DITCH.
3. SEE SHEET G4 FOR SYMBOL AND LINE LEGEND.
4. ALL EXISTING TREES CALLED OUT TO BE REMOVED ARE NOT SHOWN ON AL SHEETS. FOR CLARITY, SEE SP SHEETS FOR ALL EXISTING TREES.

REVISIONS	DATE	BY	DESIGNED
2	CHANGE ORDER	11/7/16	CB
			J. JUN / C. BUITRAGO
			DRAWN B. PURGANAN
			CHECKED Y. HO
			APPROVED O. KIKUTA

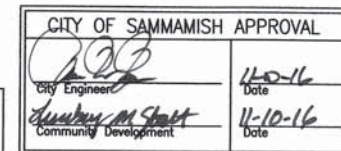
ONE INCH AT FULL SCALE.
IF NOT, SCALE ACCORDINGLY
FILE NAME: BL1521075P20T03AL-01
JOB No. 554-1521-075 P20T03
DATE JANUARY 2016



Parametrix
ENGINEERING, PLANNING, ENVIRONMENTAL SCIENCES
719 2ND AVENUE, SUITE 200 | SEATTLE, WA 98104
P 206.394.3700
WWW.PARAMETRIX.COM

PROJECT NAME
**EAST LAKE SAMMAMISH
MASTER PLAN TRAIL
SOUTH SAMMAMISH SEGMENT A**
SAMMAMISH, WA

DPER ACTIVITY NUMBER
GRDE14-0052 / SHORE14-0022
FEDERAL AID # CM-2017(133)

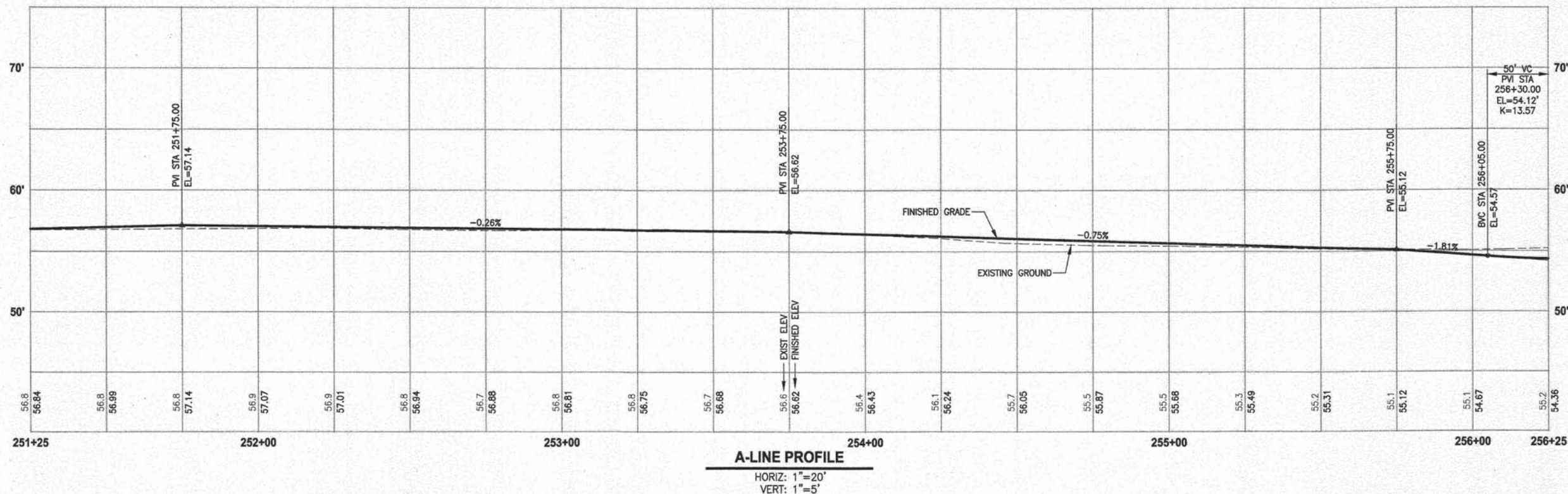
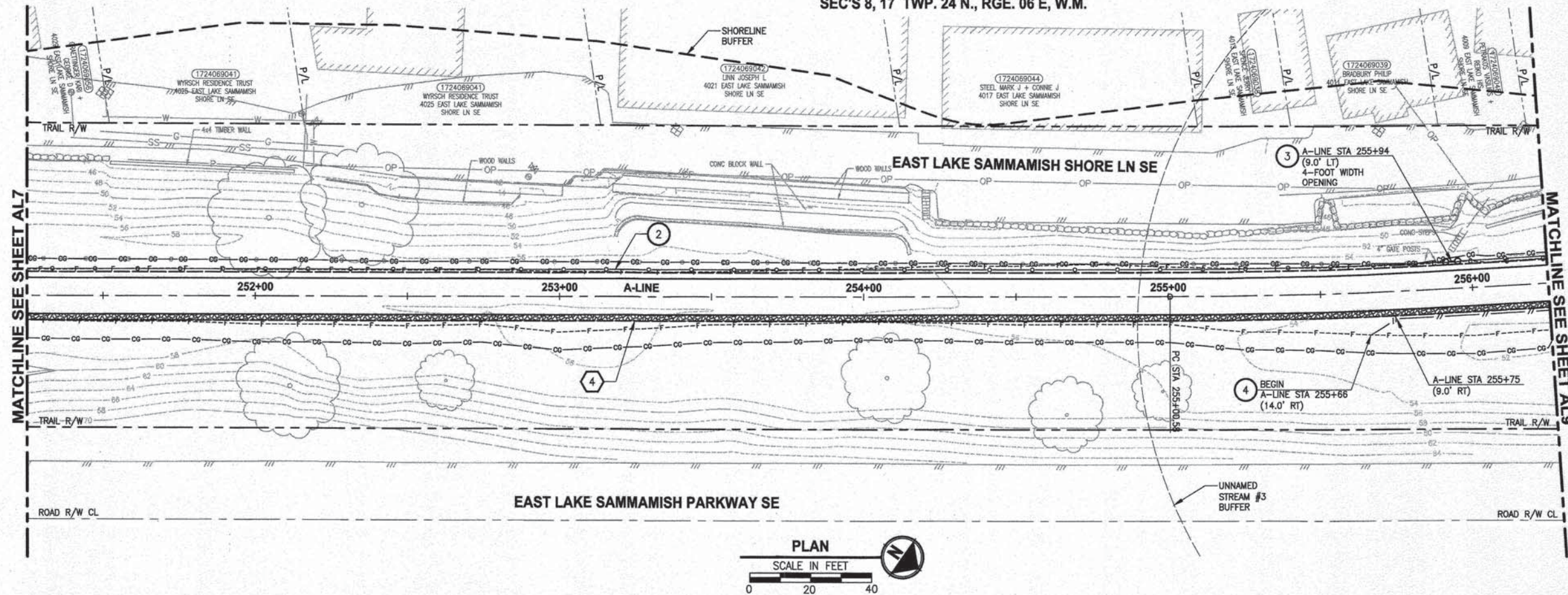


PLAN AND PROFILE

SHEET NO.
32 OF 78
AL7

LAYOUT: ALB
PATH: U:\P50\Projects\0121-KingCo\554-1521-075-ELST\985\Sec\A00\Phase 20\Task 03\DWG\ PLOTTED BY: purgubut DATE: Tuesday, January 19, 2016 4:10:34 PM

SEC'S 8, 17 TWP. 24 N., RGE. 06 E, W.M.



- CIVIL CONSTRUCTION NOTES:**
1. INSTALL STRUCTURAL EARTH WALL. SEE WALL DETAILS ON SHEET WD1. SEE WALL PROFILES ON WP SHEETS.
 2. INSTALL COATED CHAIN LINK FENCE TYPE 6. FOR GROUND POST INSTALLATION SEE APPENDIX B IN THE SPECIFICATIONS. SEE SHEET WD1 FOR INSTALLATION ON TOP OF WALL.
 3. INSTALL CHAIN LINK CANTILEVER GATE. SEE DETAIL ON SHEET MD2.
 4. INSTALL SPLIT RAIL FENCE. SEE DETAILS ON SHEET MD3.
 5. INSTALL PATTERNED CONCRETE INTERSECTION. SEE DETAILS ON SHEET MD2 AND DP SHEETS.
 6. CEMENT CONCRETE DRIVEWAY APPROACH. SEE DP SHEETS.
 7. INSTALL ROCKERY. SEE DETAILS ON DP AND MD SHEETS.
 8. WALL DRAIN OUTFALL LOCATION. SEE SHEET WD1.
 9. CEMENT CONCRETE TRAFFIC CURB AND GUTTER PER WSDOT STD PLAN F-10.12-03. SEE DETAILS IN APPENDIX B OF SPECIFICATIONS.
 10. PARALLEL CURB RAMP PER WSDOT STD PLAN F-40.12-02. SEE DETAILS IN APPENDIX B OF SPECIFICATIONS.
 11. INSTALL EXTRUDED CURB TYPE 5 PER WSDOT STD PLAN F-10.42-00. SEE DETAILS IN APPENDIX B OF SPECIFICATIONS.
 12. INSTALL WOOD GUARDRAIL. SEE DETAILS ON SHEET MD3.
 13. NOT USED.
 14. INSTALL REST STOP TYPE 1. SEE DETAILS ON SHEET MD3.

- STORMWATER CONSTRUCTION NOTES:**
1. CONCRETE HEADWALL. SEE DETAILS ON SHEET DD1 AND WP SHEETS.
 2. ROCK PAD. SEE DETAIL 2 ON SHEET DD1 AND WP SHEETS.
 3. CONNECTION TO DRAINAGE STRUCTURE AND CLEANING EXISTING DRAINAGE STRUCTURE.
 4. INFILTRATION TRENCH. SEE DETAIL 3 ON SHEET DD1.
 5. CONCRETE CHANNEL. SEE DD1 FOR DETAILS AND SD2 FOR PROFILE.
 6. PLUGGING EXISTING PIPE.

- GENERAL NOTES:**
1. SEE DP SHEETS FOR DRIVEWAY PLAN AND PROFILE AND ROCKERY LOCATIONS.
 2. SEE SD AND DD SHEETS FOR DETAILS RELATED TO STORM DRAIN STRUCTURES, PIPES AND DITCH.
 3. SEE SHEET G4 FOR SYMBOL AND LINE LEGEND.
 4. ALL EXISTING TREES CALLED OUT TO BE REMOVED ARE NOT SHOWN ON AL SHEETS. FOR CLARITY, SEE SP SHEETS FOR ALL EXISTING TREES.

CITY OF SAMMAMISH APPROVAL	
	11-10-16
City Engineer	Date
	11-10-16
Community Development	Date

DPER ACTIVITY NUMBER
GRDE14-0052 / SHORE14-0022
FEDERAL AID # CM-2017(133)



Parametrix
ENGINEERING . PLANNING . ENVIRONMENTAL SCIENCES
719 2ND AVENUE, SUITE 200 | SEATTLE, WA 98104
P 206.394.3700
WWW.PARAMETRIX.COM

PROJECT NAME
**EAST LAKE SAMMAMISH
MASTER PLAN TRAIL
SOUTH SAMMAMISH SEGMENT A**
SAMMAMISH, WA

PLAN AND PROFILE

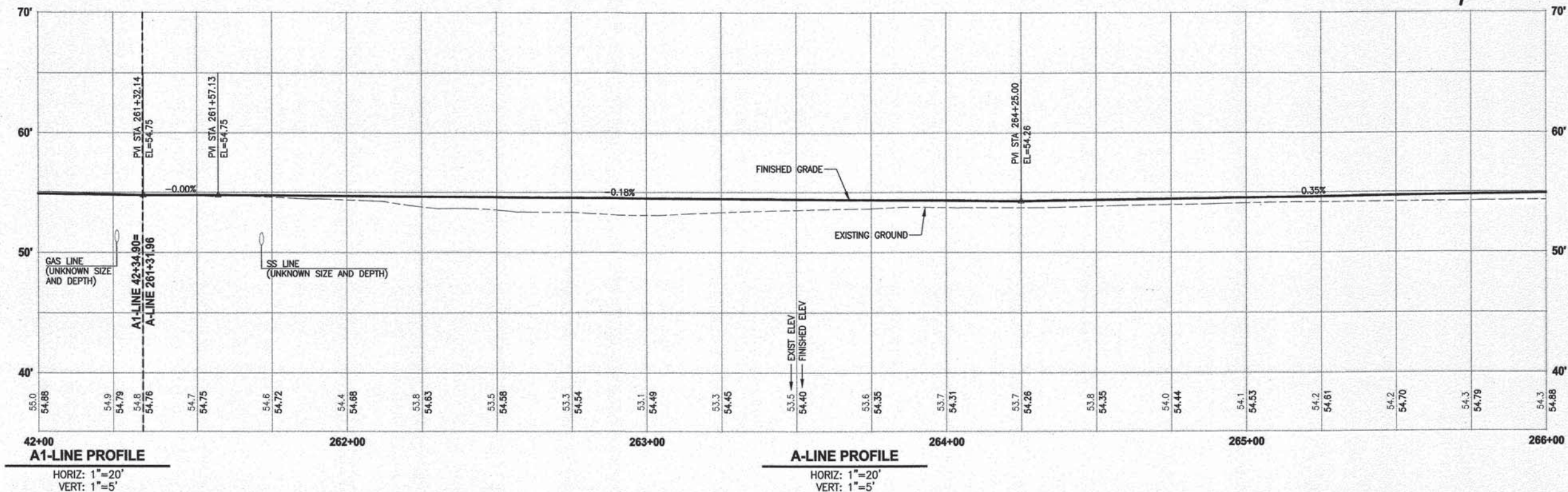
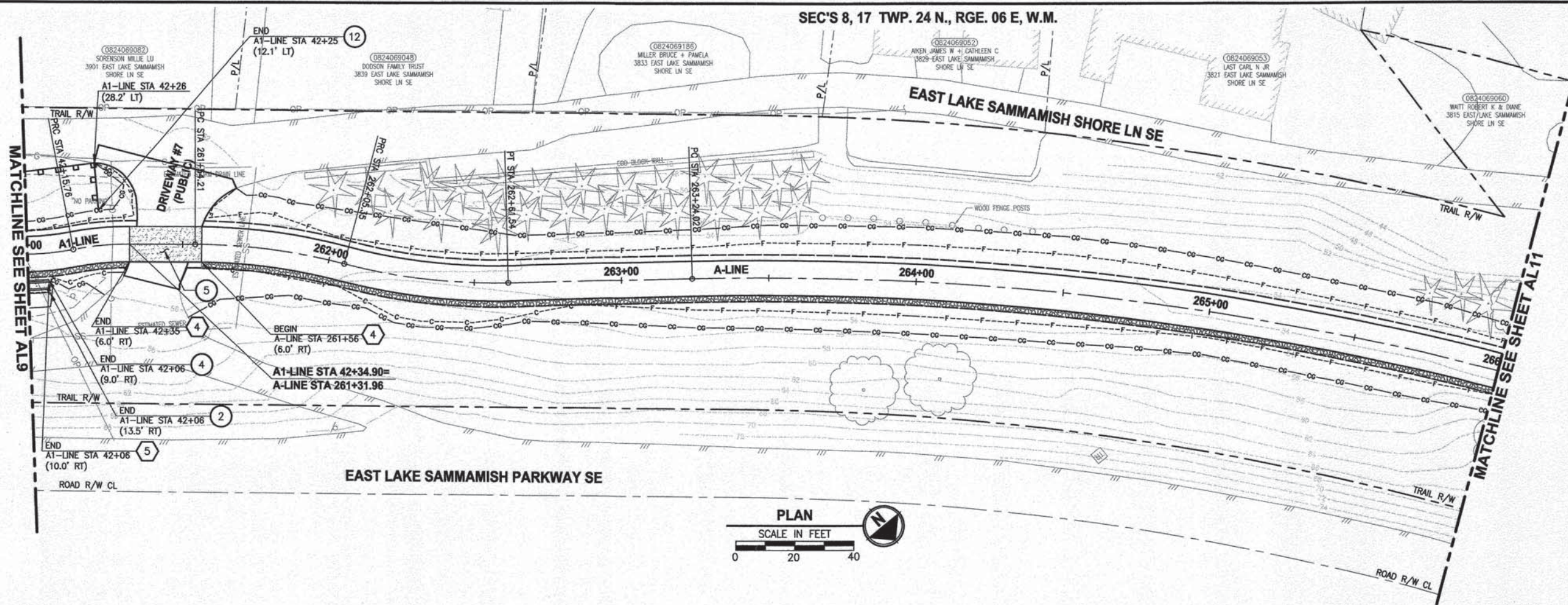
SHEET NO.
33 OF 78
AL8

REVISIONS	DATE	BY	DESIGNED
			J. JUN / C. BUITRAGO
			DRAWN
			B. PURGANAN
			CHECKED
			Y. HO
			APPROVED
			O. KIKUTA

ONE INCH AT FULL SCALE.
IF NOT, SCALE ACCORDINGLY.
FILE NAME
BL1521075P20T03AL-01
JOB NO.
554-1521-075 P20T03
DATE
JANUARY 2016

PATH: U:\P20\Projects\Shoreline\1521-KingCo\554-1521-075-ELST\985\CAAD\Phase 20\Task 03\DWG\ DATE: Wednesday, January 20, 2016 2:51:16 PM PLOTTED BY: purguban

SEC'S 8, 17 TWP. 24 N., RGE. 06 E, W.M.



CIVIL CONSTRUCTION NOTES:


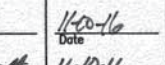
1. INSTALL STRUCTURAL EARTH WALL. SEE WALL DETAILS ON SHEET WD1. SEE WALL PROFILES ON WP SHEETS.
2. INSTALL COATED CHAIN LINK FENCE TYPE 6. FOR GROUND POST INSTALLATION SEE APPENDIX B IN THE SPECIFICATIONS. SEE SHEET WD1 FOR INSTALLATION ON TOP OF WALL.
3. INSTALL CHAIN LINK CANTILEVER GATE. SEE DETAIL ON SHEET MD2.
4. INSTALL SPLIT RAIL FENCE. SEE DETAILS ON SHEET MD3.
5. INSTALL PATTERNED CONCRETE INTERSECTION. SEE DETAILS ON SHEET MD2 AND DP SHEETS.
6. CEMENT CONCRETE DRIVEWAY APPROACH. SEE DP SHEETS.
7. INSTALL ROCKERY. SEE DETAILS ON DP AND MD SHEETS.
8. WALL DRAIN OUTFALL LOCATION. SEE SHEET WD1.
9. CEMENT CONCRETE TRAFFIC CURB AND GUTTER PER WSDOT STD PLAN F-10.12-03. SEE DETAILS IN APPENDIX B OF SPECIFICATIONS.
10. PARALLEL CURB RAMP PER WSDOT STD PLAN F-40.12-02. SEE DETAILS IN APPENDIX B OF SPECIFICATIONS.
11. INSTALL EXTRUDED CURB TYPE 5 PER WSDOT STD PLAN F-10.42-00. SEE DETAILS IN APPENDIX B OF SPECIFICATIONS.
12. INSTALL WOOD GUARDRAIL. SEE DETAILS ON SHEET MD3.
13. NOT USED.
14. INSTALL REST STOP TYPE 1. SEE DETAILS ON SHEET MD3.

STORMWATER CONSTRUCTION NOTES:

1. CONCRETE HEADWALL. SEE DETAILS ON SHEET DD1 AND WP SHEETS.
2. ROCK PAD. SEE DETAIL 2 ON SHEET DD1 AND WP SHEETS.
3. CONNECTION TO DRAINAGE STRUCTURE AND CLEANING EXISTING DRAINAGE STRUCTURE.
4. INFILTRATION TRENCH. SEE DETAIL 3 ON SHEET DD1.
5. CONCRETE CHANNEL. SEE DD1 FOR DETAILS AND SD2 FOR PROFILE.
6. PLUGGING EXISTING PIPE.

GENERAL NOTES:

1. SEE DP SHEETS FOR DRIVEWAY PLAN AND PROFILE AND ROCKERY LOCATIONS.
2. SEE SD AND DD SHEETS FOR DETAILS RELATED TO STORM DRAIN STRUCTURES, PIPES AND DITCH.
3. SEE SHEET G4 FOR SYMBOL AND LINE LEGEND.
4. ALL EXISTING TREES CALLED OUT TO BE REMOVED ARE NOT SHOWN ON AL SHEETS. FOR CLARITY, SEE SP SHEETS FOR ALL EXISTING TREES.

CITY OF SAMMAMISH APPROVAL	
	
City Engineer	Community Development
1/20/16	1/20/16
Date	Date

DPER ACTIVITY NUMBER
GRDE14-0052 / SHORE14-0022
FEDERAL AID # CM-2017(133)

REVISIONS	DATE	BY	DESIGNED
			J. JUN / C. BUITRAGO
			DRAWN
			B. PURGANAN
			CHECKED
			Y. HO
			APPROVED
			O. KIKUTA

ONE INCH AT FULL SCALE.
IF NOT, SCALE ACCORDINGLY
FILE NAME
BL1521075P20T03AL-01
JOB No.
554-1521-075 P20T03
DATE
JANUARY 2016



Parametrix

ENGINEERING · PLANNING · ENVIRONMENTAL SCIENCES

719 2ND AVENUE, SUITE 200 | SEATTLE, WA 98104
P 206.394.3700
WWW.PARAMETRIX.COM

PROJECT NAME

EAST LAKE SAMMAMISH
MASTER PLAN TRAIL
SOUTH SAMMAMISH SEGMENT A
SAMMAMISH, WA

PLAN AND PROFILE

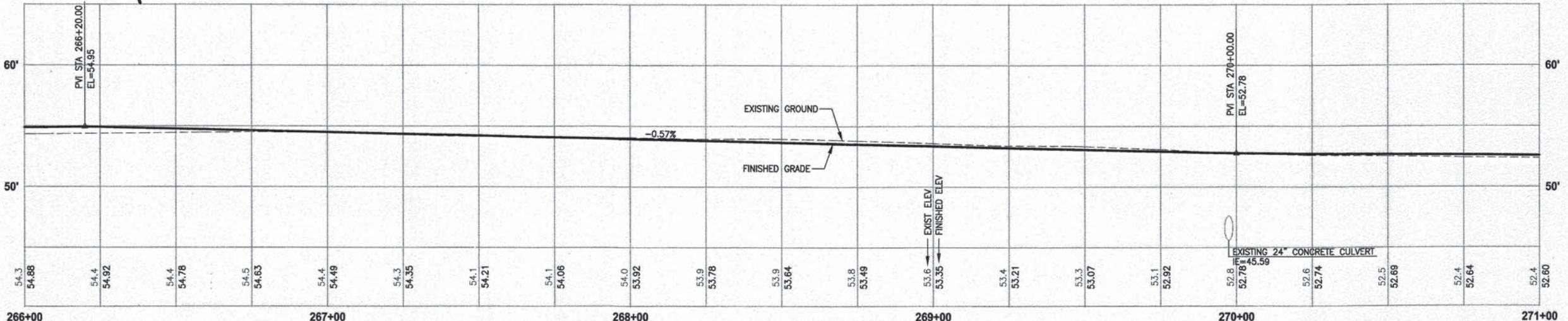
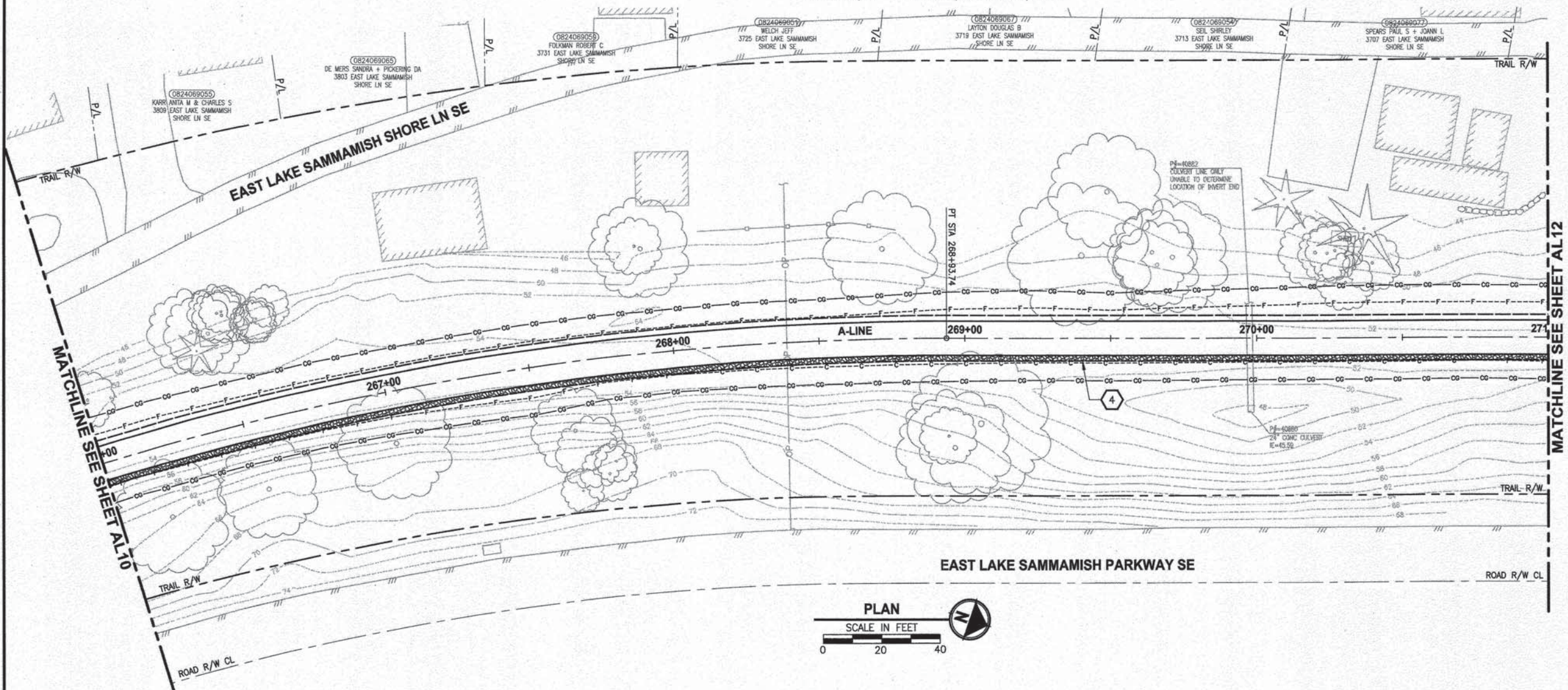
SHEET NO.
35 OF 78

AL10

LAYOUT: AL11
PATH: U:\P90\Projects\Clients\1521-KingCo\554-1521-075-ELST\995\ea\CAAD\Phase 20\Task 03\DWG\

PLOTTED BY: purgobut DATE: Tuesday, January 19, 2016 4:11:24 PM

SEC'S 8, 17 TWP. 24 N., RGE. 06 E, W.M.



CIVIL CONSTRUCTION NOTES:

1. INSTALL STRUCTURAL EARTH WALL. SEE WALL DETAILS ON SHEET WD1. SEE WALL PROFILES ON WP SHEETS.
2. INSTALL COATED CHAIN LINK FENCE TYPE 6. FOR GROUND POST INSTALLATION SEE APPENDIX B IN THE SPECIFICATIONS. SEE SHEET WD1 FOR INSTALLATION ON TOP OF WALL.
3. INSTALL CHAIN LINK CANTILEVER GATE. SEE DETAIL ON SHEET MD2.
4. INSTALL SPLIT RAIL FENCE. SEE DETAILS ON SHEET MD3.
5. INSTALL PATTERNED CONCRETE INTERSECTION. SEE DETAILS ON SHEET MD2 AND DP SHEETS.
6. CEMENT CONCRETE DRIVEWAY APPROACH. SEE DP SHEETS.
7. INSTALL ROCKERY. SEE DETAILS ON DP AND MD SHEETS.
8. WALL DRAIN OUTFALL LOCATION. SEE SHEET WD1.
9. CEMENT CONCRETE TRAFFIC CURB AND GUTTER PER WSDOT STD PLAN F-10.12-03. SEE DETAILS IN APPENDIX B OF SPECIFICATIONS.
10. PARALLEL CURB RAMP PER WSDOT STD PLAN F-40.12-02. SEE DETAILS IN APPENDIX B OF SPECIFICATIONS.
11. INSTALL EXTRUDED CURB TYPE 5 PER WSDOT STD PLAN F-10.42-00. SEE DETAILS IN APPENDIX B OF SPECIFICATIONS.
12. INSTALL WOOD GUARDRAIL. SEE DETAILS ON SHEET MD3.
13. NOT USED.
14. INSTALL REST STOP TYPE 1. SEE DETAILS ON SHEET MD3.

STORMWATER CONSTRUCTION NOTES:

1. CONCRETE HEADWALL. SEE DETAILS ON SHEET DD1 AND WP SHEETS.
2. ROCK PAD. SEE DETAIL 2 ON SHEET DD1 AND WP SHEETS.
3. CONNECTION TO DRAINAGE STRUCTURE AND CLEANING EXISTING DRAINAGE STRUCTURE.
4. INFILTRATION TRENCH. SEE DETAIL 3 ON SHEET DD1.
5. CONCRETE CHANNEL. SEE DD1 FOR DETAILS AND SD2 FOR PROFILE.
6. PLUGGING EXISTING PIPE.

GENERAL NOTES:

1. SEE DP SHEETS FOR DRIVEWAY PLAN AND PROFILE AND ROCKERY LOCATIONS.
2. SEE SD AND DD SHEETS FOR DETAILS RELATED TO STORM DRAIN STRUCTURES, PIPES AND DITCH.
3. SEE SHEET G4 FOR SYMBOL AND LINE LEGEND.
4. ALL EXISTING TREES CALLED OUT TO BE REMOVED ARE NOT SHOWN ON AL SHEETS. FOR CLARITY, SEE SP SHEETS FOR ALL EXISTING TREES.

CITY OF SAMMAMISH APPROVAL	
	1/19/16 Date
	1/19/16 Date

DPER ACTIVITY NUMBER
GRDE14-0052 / SHORE14-0022
FEDERAL AID # CM-2017(133)



Parametrix
ENGINEERING, PLANNING, ENVIRONMENTAL SCIENCES
719 2ND AVENUE, SUITE 200 | SEATTLE, WA 98104
P 206.394.3700
WWW.PARAMETRIX.COM

PROJECT NAME
**EAST LAKE SAMMAMISH
MASTER PLAN TRAIL
SOUTH SAMMAMISH SEGMENT A**
SAMMAMISH, WA

PLAN AND PROFILE

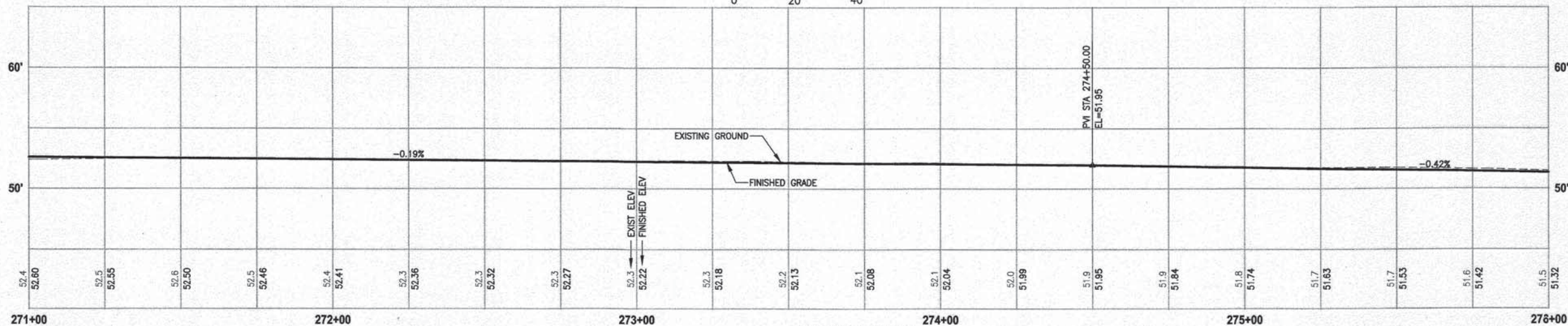
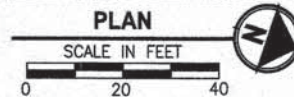
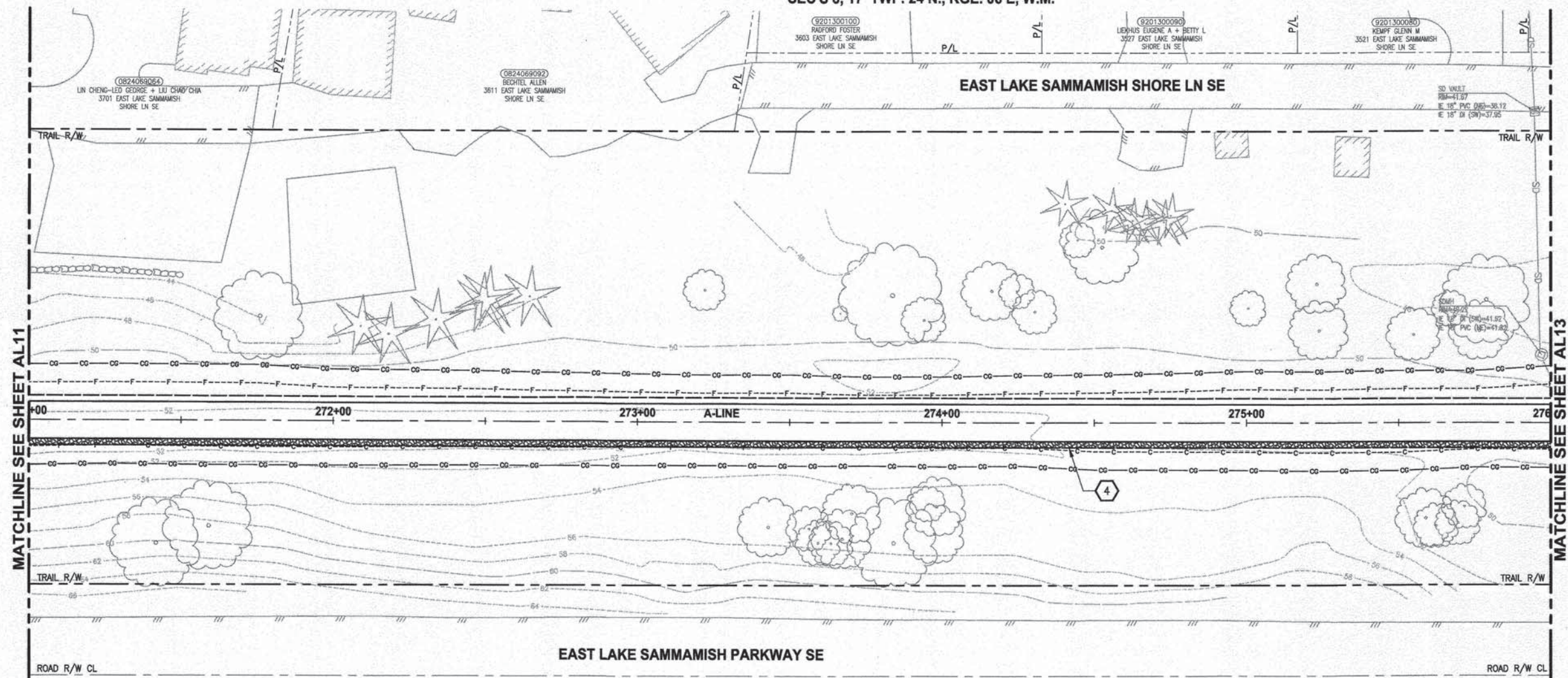
SHEET NO.
36 OF 78
AL11

REVISIONS	DATE	BY	DESIGNED
			J. JUN / C. BUITRAGO
			DRAWN
			B. PURGANAN
			CHECKED
			Y. HO
			APPROVED
			O. KIKUTA

ONE INCH AT FULL SCALE.
IF NOT, SCALE ACCORDINGLY
FILE NAME
BL1521075P20T03AL-01
JOB No.
554-1521-075 P20T03
DATE
JANUARY 2016

LAYOUT: AL12
PATH: U:\P50\Projects\City\1521-KingCo\554-1521-075-ELST\98S\CAAD\Phase 20\Task 03\DWG\ PLOTTED BY: purgubut DATE: Tuesday, January 19, 2016 4:11:38 PM

SEC'S 8, 17 TWP. 24 N., RGE. 06 E, W.M.



CIVIL CONSTRUCTION NOTES:

1. INSTALL STRUCTURAL EARTH WALL. SEE WALL DETAILS ON SHEET WD1. SEE WALL PROFILES ON WP SHEETS.
2. INSTALL COATED CHAIN LINK FENCE TYPE 6, FOR GROUND POST INSTALLATION SEE APPENDIX B IN THE SPECIFICATIONS. SEE SHEET WD1 FOR INSTALLATION ON TOP OF WALL.
3. INSTALL CHAIN LINK CANTILEVER GATE, SEE DETAIL ON SHEET MD2.
4. INSTALL SPLIT RAIL FENCE, SEE DETAILS ON SHEET MD3.
5. INSTALL PATTERNED CONCRETE INTERSECTION, SEE DETAILS ON SHEET MD2 AND DP SHEETS.
6. CEMENT CONCRETE DRIVEWAY APPROACH. SEE DP SHEETS.
7. INSTALL ROCKERY. SEE DETAILS ON DP AND MD SHEETS.
8. WALL DRAIN OUTFALL LOCATION. SEE SHEET WD1.
9. CEMENT CONCRETE TRAFFIC CURB AND GUTTER PER WSDOT STD PLAN F-10.12-03. SEE DETAILS IN APPENDIX B OF SPECIFICATIONS.
10. PARALLEL CURB RAMP PER WSDOT STD PLAN F-40.12-02. SEE DETAILS IN APPENDIX B OF SPECIFICATIONS.
11. INSTALL EXTRUDED CURB TYPE 5 PER WSDOT STD PLAN F-10.42-00. SEE DETAILS IN APPENDIX B OF SPECIFICATIONS.
12. INSTALL WOOD GUARDRAIL, SEE DETAILS ON SHEET MD3.
13. NOT USED.
14. INSTALL REST STOP TYPE 1, SEE DETAILS ON SHEET MD3.

STORMWATER CONSTRUCTION NOTES:

1. CONCRETE HEADWALL, SEE DETAILS ON SHEET DD1 AND WP SHEETS.
2. ROCK PAD, SEE DETAIL 2 ON SHEET DD1 AND WP SHEETS.
3. CONNECTION TO DRAINAGE STRUCTURE AND CLEANING EXISTING DRAINAGE STRUCTURE.
4. INFILTRATION TRENCH, SEE DETAIL 3 ON SHEET DD1.
5. CONCRETE CHANNEL, SEE DD1 FOR DETAILS AND SD2 FOR PROFILE.
6. PLUGGING EXISTING PIPE.

GENERAL NOTES:

1. SEE DP SHEETS FOR DRIVEWAY PLAN AND PROFILE AND ROCKERY LOCATIONS.
2. SEE SD AND DD SHEETS FOR DETAILS RELATED TO STORM DRAIN STRUCTURES, PIPES AND DITCH.
3. SEE SHEET G4 FOR SYMBOL AND LINE LEGEND.
4. ALL EXISTING TREES CALLED OUT TO BE REMOVED ARE NOT SHOWN ON AL SHEETS. FOR CLARITY, SEE SP SHEETS FOR ALL EXISTING TREES.

CITY OF SAMMAMISH APPROVAL	
	Date: 1/15/16
	Date: 1/15/16

DPER ACTIVITY NUMBER
GRDE14-0052 / SHORE14-0022
FEDERAL AID # CM-2017(133)

PROJECT NAME
**EAST LAKE SAMMAMISH
MASTER PLAN TRAIL
SOUTH SAMMAMISH SEGMENT A**
SAMMAMISH, WA

PLAN AND PROFILE

SHEET NO.
37 OF 78

AL12

REVISIONS	DATE	BY	DESIGNED
			J. JUN / C. BUITRAGO
			DRAWN
			B. PURGANAN
			CHECKED
			Y. HO
			APPROVED
			O. KIKUTA

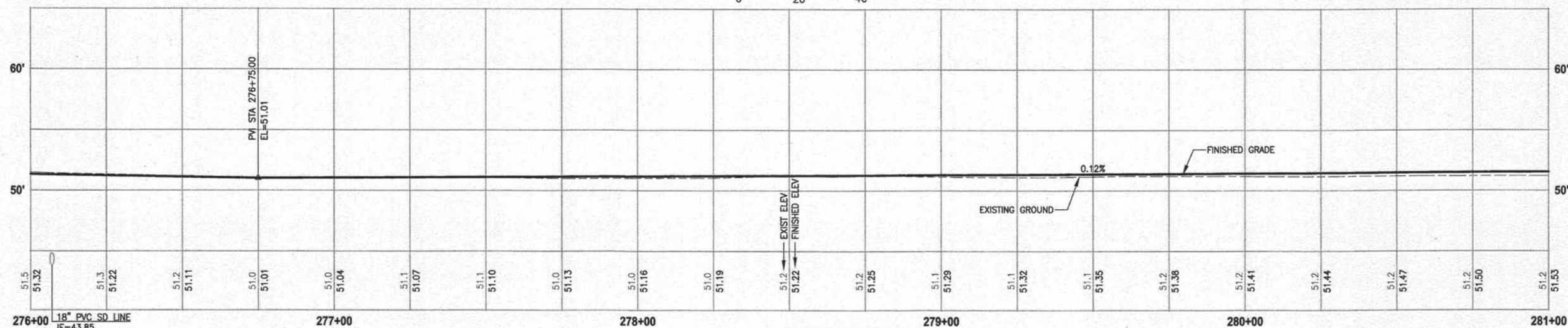
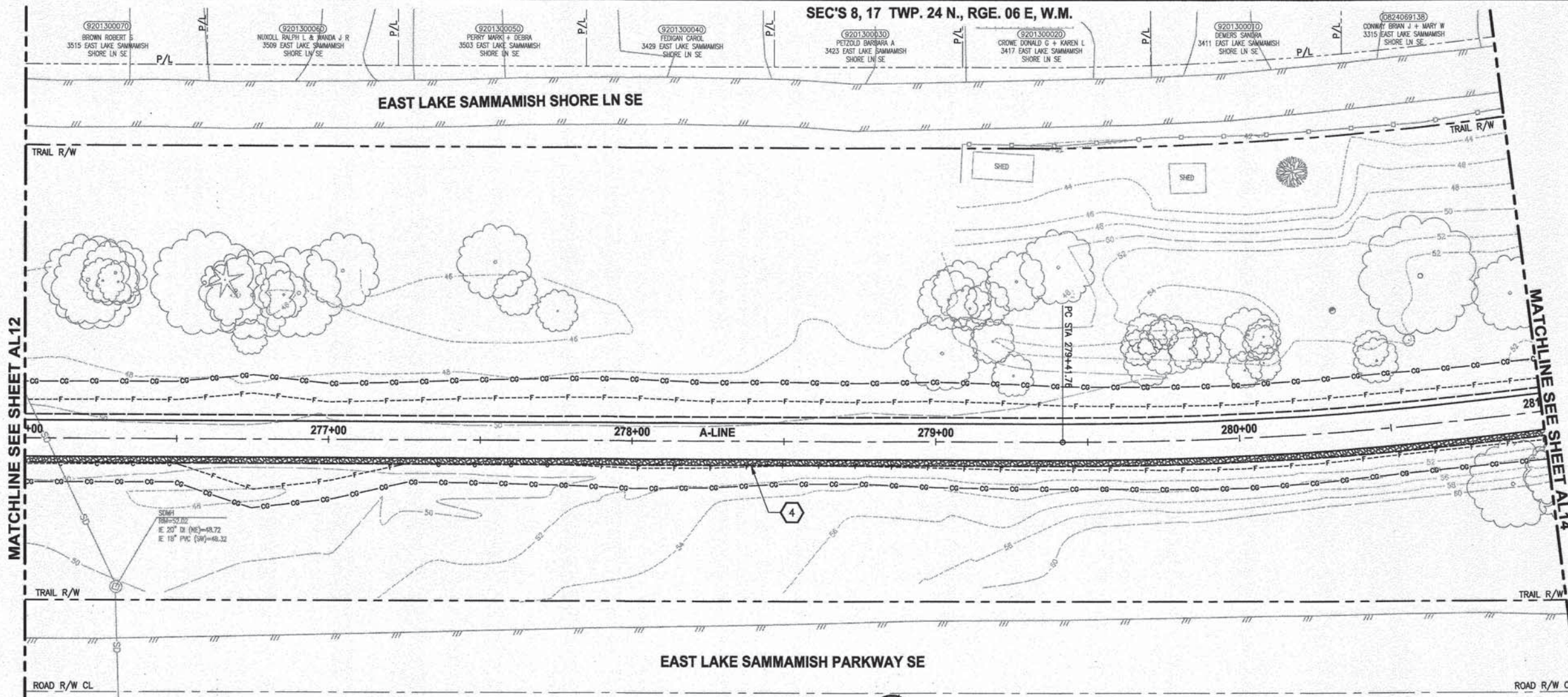
ONE INCH AT FULL SCALE.
IF NOT, SCALE ACCORDINGLY
FILE NAME
BL1521075P20T03AL-01
JOB No.
554-1521-075 P20T03
DATE
JANUARY 2016



Parametrix
ENGINEERING, PLANNING, ENVIRONMENTAL SCIENCES
719 2ND AVENUE, SUITE 200 | SEATTLE, WA 98104
P 206.394.3700
WWW.PARAMETRIX.COM

LAYOUT: AL13
PATH: U:\SSD\Projects\0121-KingCo\654-1521-075-ELST\98Sves\CADD\Phase 20\Task 03\DWG\ PLOTTED BY: purgubut DATE: Tuesday, January 19, 2016 4:11:53 PM

SEC'S 8, 17 TWP. 24 N., RGE. 06 E, W.M.



A-LINE PROFILE

HORIZ: 1"=20'
VERT: 1"=5'

CIVIL CONSTRUCTION NOTES:

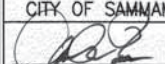

1. INSTALL STRUCTURAL EARTH WALL. SEE WALL DETAILS ON SHEET WD1. SEE WALL PROFILES ON WP SHEETS.
2. INSTALL COATED CHAIN LINK FENCE TYPE 6. FOR GROUND POST INSTALLATION SEE APPENDIX B IN THE SPECIFICATIONS. SEE SHEET WD1 FOR INSTALLATION ON TOP OF WALL.
3. INSTALL CHAIN LINK CANTILEVER GATE. SEE DETAIL ON SHEET MD2.
4. INSTALL SPLIT RAIL FENCE. SEE DETAILS ON SHEET MD3.
5. INSTALL PATTERNED CONCRETE INTERSECTION. SEE DETAILS ON SHEET MD2 AND DP SHEETS.
6. CEMENT CONCRETE DRIVEWAY APPROACH. SEE DP SHEETS.
7. INSTALL ROCKERY. SEE DETAILS ON DP AND MD SHEETS.
8. WALL DRAIN OUTFALL LOCATION. SEE SHEET WD1.
9. CEMENT CONCRETE TRAFFIC CURB AND GUTTER PER WSDOT STD PLAN F-10.12-03. SEE DETAILS IN APPENDIX B OF SPECIFICATIONS.
10. PARALLEL CURB RAMP PER WSDOT STD PLAN F-40.12-02. SEE DETAILS IN APPENDIX B OF SPECIFICATIONS.
11. INSTALL EXTRUDED CURB TYPE 5 PER WSDOT STD PLAN F-10.42-00. SEE DETAILS IN APPENDIX B OF SPECIFICATIONS.
12. INSTALL WOOD GUARDRAIL. SEE DETAILS ON SHEET MD3.
13. NOT USED.
14. INSTALL REST STOP TYPE 1. SEE DETAILS ON SHEET MD3.

STORMWATER CONSTRUCTION NOTES:

1. CONCRETE HEADWALL. SEE DETAILS ON SHEET DD1 AND WP SHEETS.
2. ROCK PAD. SEE DETAIL 2 ON SHEET DD1 AND WP SHEETS.
3. CONNECTION TO DRAINAGE STRUCTURE AND CLEANING EXISTING DRAINAGE STRUCTURE.
4. INFILTRATION TRENCH. SEE DETAIL 3 ON SHEET DD1.
5. CONCRETE CHANNEL. SEE DD1 FOR DETAILS AND SD2 FOR PROFILE.
6. PLUGGING EXISTING PIPE.

GENERAL NOTES:

1. SEE DP SHEETS FOR DRIVEWAY PLAN AND PROFILE AND ROCKERY LOCATIONS.
2. SEE SD AND DD SHEETS FOR DETAILS RELATED TO STORM DRAIN STRUCTURES, PIPES AND DITCH.
3. SEE SHEET G4 FOR SYMBOL AND LINE LEGEND.
4. ALL EXISTING TREES CALLED OUT TO BE REMOVED ARE NOT SHOWN ON AL SHEETS. FOR CLARITY, SEE SP SHEETS FOR ALL EXISTING TREES.

CITY OF SAMMAMISH APPROVAL	
 City Engineer	 Community Development
Date 1/10/16	Date 1/10/16

DPER ACTIVITY NUMBER
GRDE14-0052 / SHORE14-0022
FEDERAL AID # CM-2017(133)



Parametrix
ENGINEERING • PLANNING • ENVIRONMENTAL SCIENCES
719 2ND AVENUE, SUITE 200 | SEATTLE, WA 98104
P 206.394.3700
WWW.PARAMETRIX.COM

PROJECT NAME
**EAST LAKE SAMMAMISH
MASTER PLAN TRAIL
SOUTH SAMMAMISH SEGMENT A**
SAMMAMISH, WA

PLAN AND PROFILE

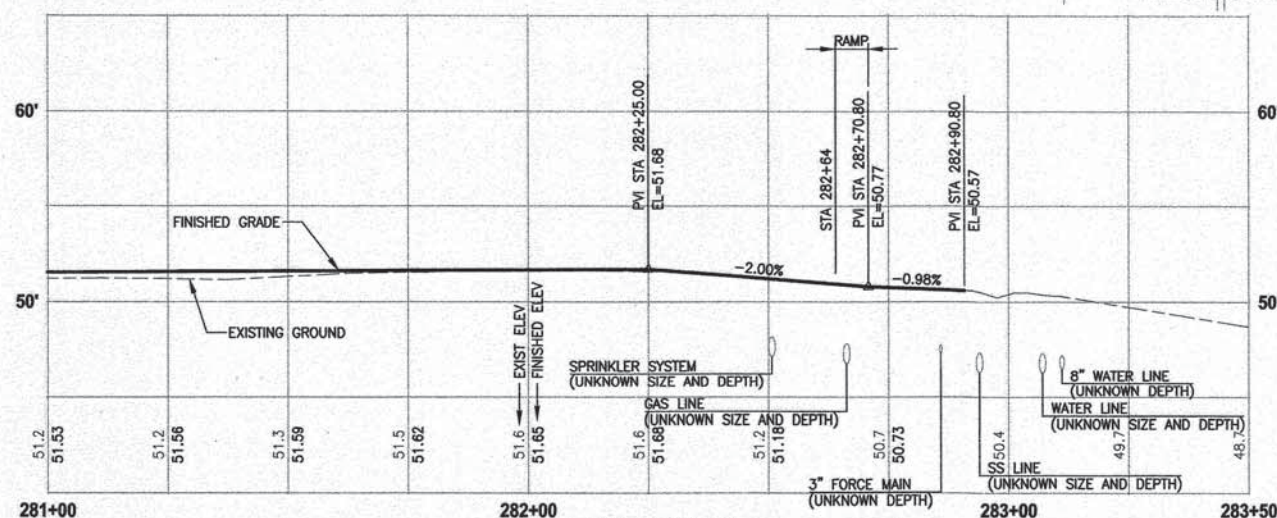
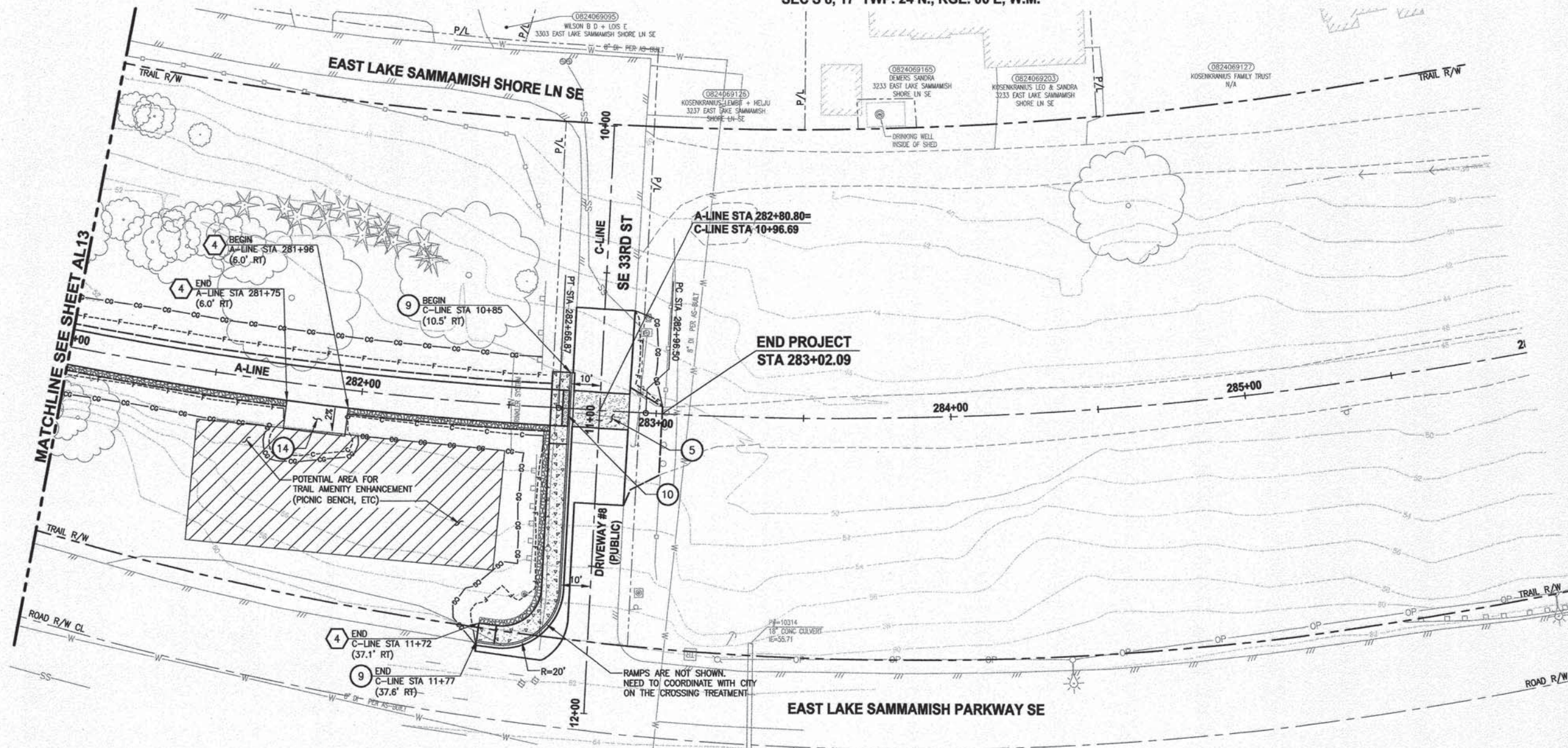
SHEET NO.
38 OF 78
AL13

REVISIONS	DATE	BY	DESIGNED
			J. JUN / C. BUITRAGO
			DRAWN
			B. PURGANAN
			CHECKED
			Y. HO
			APPROVED
			O. KIKUTA

ONE INCH AT FULL SCALE.
IF NOT, SCALE ACCORDINGLY
FILE NAME
BL1521075P20T03AL-01
JOB No.
554-1521-075 P20T03
DATE
JANUARY 2016

LAYOUT: AL14
PATH: U:\PDS\Projects\01521-KingCo\554-1521-075-ELST\99Sves\CA00\Phase 20\Task 03\DWG\3
PLOTED BY: purgubut DATE: Wednesday, January 20, 2016 3:45:48 PM

SEC'S 8, 17 TWP. 24 N., RGE. 06 E, W.M.



A-LINE PROFILE

HORIZ: 1"=20'
VERT: 1"=5'



CIVIL CONSTRUCTION NOTES:

1. INSTALL STRUCTURAL EARTH WALL. SEE WALL DETAILS ON SHEET WD1. SEE WALL PROFILES ON WP SHEETS.
2. INSTALL COATED CHAIN LINK FENCE TYPE 6. FOR GROUND POST INSTALLATION SEE APPENDIX B IN THE SPECIFICATIONS. SEE SHEET WD1 FOR INSTALLATION ON TOP OF WALL.
3. INSTALL CHAIN LINK CANTILEVER GATE, SEE DETAIL ON SHEET MD2.
4. INSTALL SPLIT RAIL FENCE, SEE DETAILS ON SHEET MD3.
5. INSTALL PATTERNED CONCRETE INTERSECTION, SEE DETAILS ON SHEET MD2 AND DP SHEETS.
6. CEMENT CONCRETE DRIVEWAY APPROACH. SEE DP SHEETS.
7. INSTALL ROCKERY. SEE DETAILS ON DP AND MD SHEETS.
8. WALL DRAIN OUTFALL LOCATION. SEE SHEET WD1.
9. CEMENT CONCRETE TRAFFIC CURB AND GUTTER PER WSDOT STD PLAN F-10.12-03. SEE DETAILS IN APPENDIX B OF SPECIFICATIONS.
10. PARALLEL CURB RAMP PER WSDOT STD PLAN F-40.12-02. SEE DETAILS IN APPENDIX B OF SPECIFICATIONS.
11. INSTALL EXTRUDED CURB TYPE 5 PER WSDOT STD PLAN F-10.42-00. SEE DETAILS IN APPENDIX B OF SPECIFICATIONS.
12. INSTALL WOOD GUARDRAIL, SEE DETAILS ON SHEET MD3.
13. NOT USED.
14. INSTALL REST STOP TYPE 1, SEE DETAILS ON SHEET MD3.

STORMWATER CONSTRUCTION NOTES:

1. CONCRETE HEADWALL, SEE DETAILS ON SHEET DD1 AND WP SHEETS.
2. ROCK PAD, SEE DETAIL 2 ON SHEET DD1 AND WP SHEETS.
3. CONNECTION TO DRAINAGE STRUCTURE AND CLEANING EXISTING DRAINAGE STRUCTURE.
4. INFILTRATION TRENCH, SEE DETAIL 3 ON SHEET DD1.
5. CONCRETE CHANNEL, SEE DD1 FOR DETAILS AND SD2 FOR PROFILE.
6. PLUGGING EXISTING PIPE.

GENERAL NOTES:

1. SEE DP SHEETS FOR DRIVEWAY PLAN AND PROFILE AND ROCKERY LOCATIONS.
2. SEE SD AND DD SHEETS FOR DETAILS RELATED TO STORM DRAIN STRUCTURES, PIPES AND DITCH.
3. SEE SHEET G4 FOR SYMBOL AND LINE LEGEND.
4. ALL EXISTING TREES CALLED OUT TO BE REMOVED ARE NOT SHOWN ON AL SHEETS. FOR CLARITY, SEE SP SHEETS FOR ALL EXISTING TREES.

LEGEND:

- CEMENT CONCRETE SIDEWALK
- DETECTABLE WARNING SURFACE PER WSDOT STD PLAN F-45.10-01.

CITY OF SAMMAMISH APPROVAL	
	Date: 11-10-16
	Date: 11-10-16

DPER ACTIVITY NUMBER
GRDE14-0052 / SHORE14-0022
FEDERAL AID # CM-2017(133)

Parametrix
ENGINEERING · PLANNING · ENVIRONMENTAL SCIENCES
719 2ND AVENUE, SUITE 200 | SEATTLE, WA 98104
P 206.394.3700
WWW.PARAMETRIX.COM

PROJECT NAME
**EAST LAKE SAMMAMISH
MASTER PLAN TRAIL
SOUTH SAMMAMISH SEGMENT A**
SAMMAMISH, WA

PLAN AND PROFILE

SHEET NO.
39 OF 78
AL14

REVISIONS	DATE	BY	DESIGNED
			J. JUN / C. BUITRAGO
			DRAWN
			B. PURGANAN
			CHECKED
			Y. HO
			APPROVED
			O. KIKUTA

ONE INCH AT FULL SCALE.
IF NOT, SCALE ACCORDINGLY.
FILE NAME
BL1521075P20T03AL-01
JOB No.
554-1521-075 P20T03
DATE
JANUARY 2016

