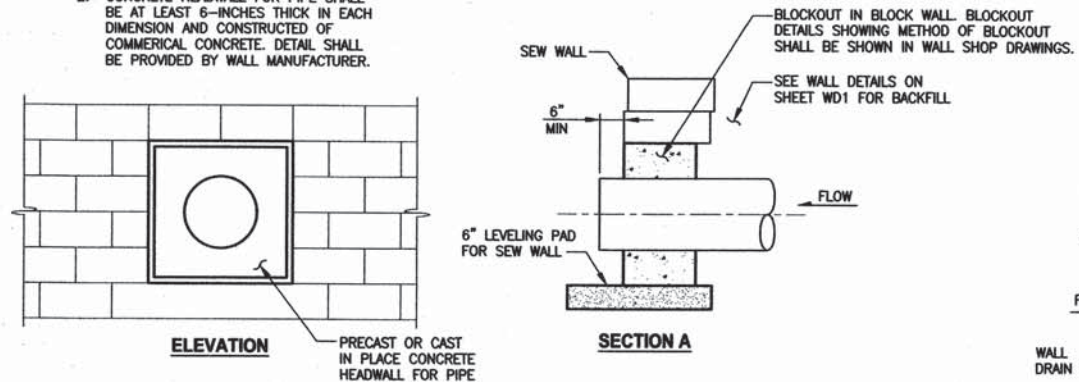
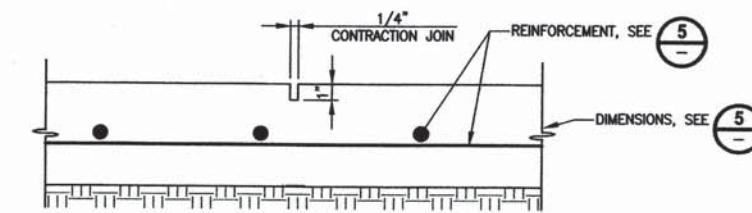
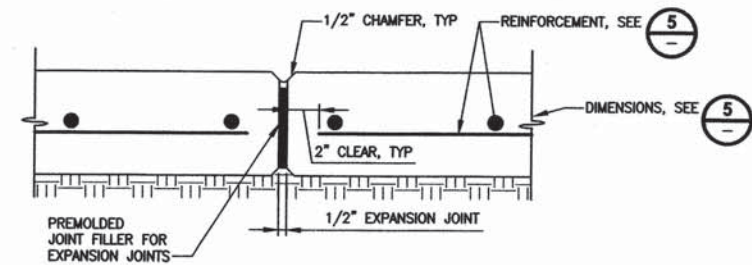
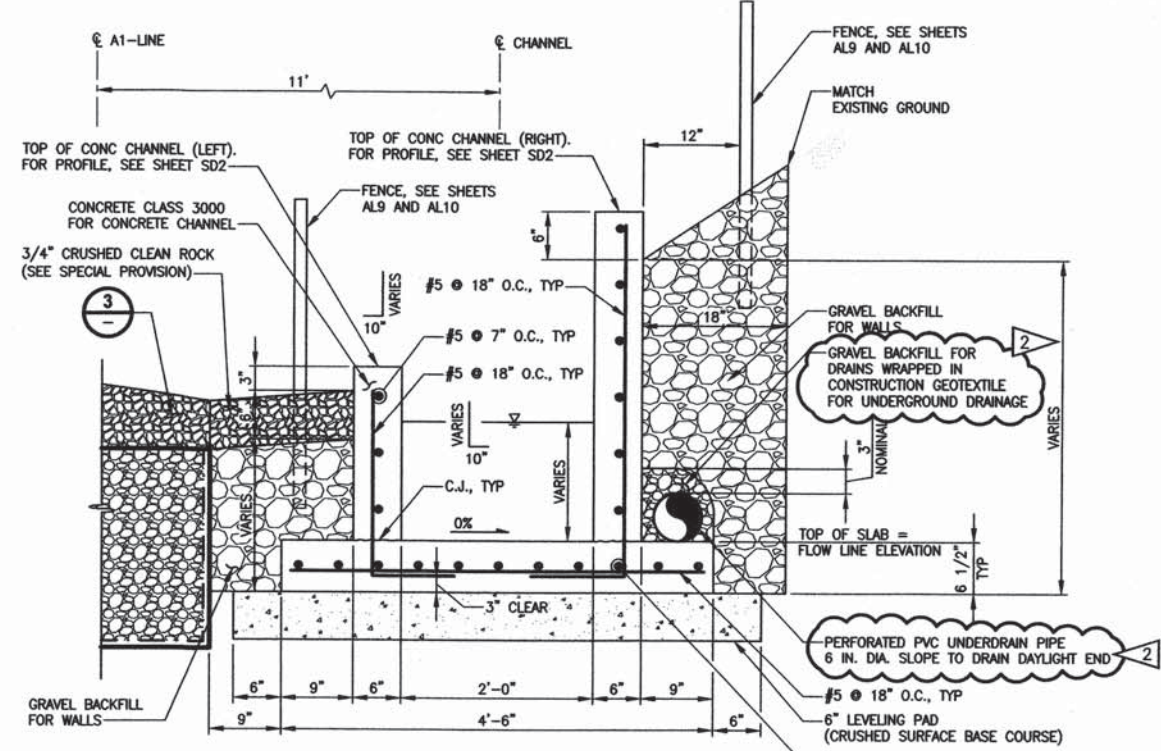
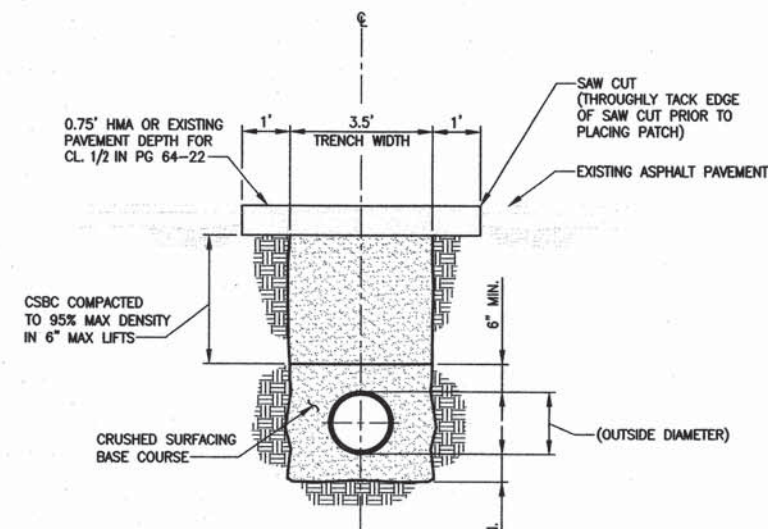
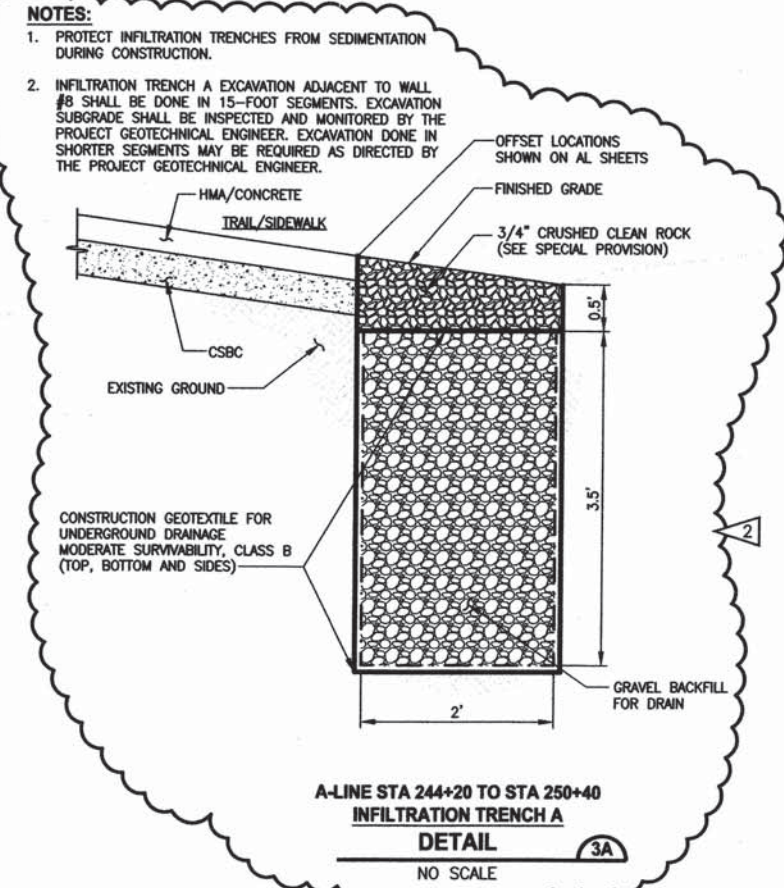
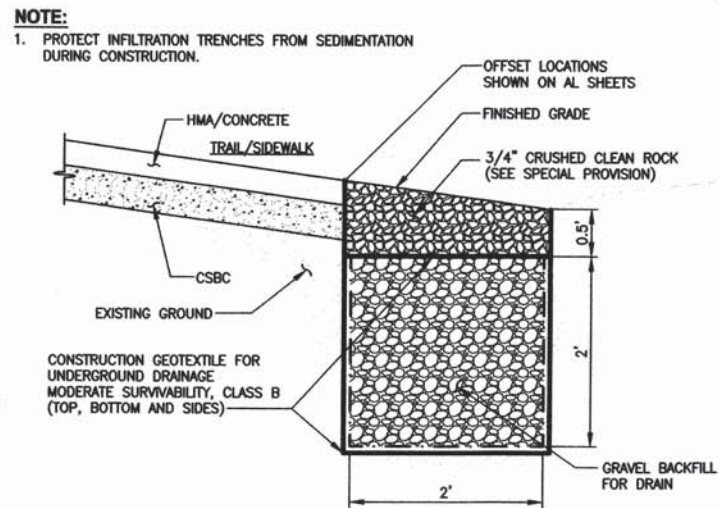
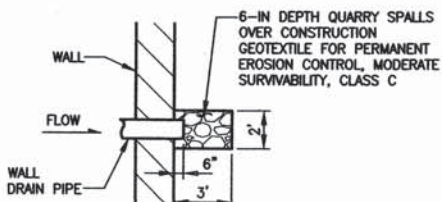


- NOTES:**
- FOR SEW WALLS SEE SHEET WD1.
 - CONCRETE HEADWALL FOR PIPE SHALL BE AT LEAST 6-INCHES THICK IN EACH DIMENSION AND CONSTRUCTED OF COMMERCIAL CONCRETE. DETAIL SHALL BE PROVIDED BY WALL MANUFACTURER.



CONCRETE HEADWALL FOR STRUCTURAL EARTH WALL
DETAIL 1
NO SCALE



- NOTES:**
- EXPANSION JOINTS FOR CONCRETE CHANNEL WALLS AND FOOTING SHALL HAVE MAXIMUM 60 FOOT ON CENTER SPACING. SEE SHEET SD2.
 - CONTRACTION JOINTS FOR CONCRETE CHANNEL WALLS AND FOOTING SHALL HAVE MAXIMUM 20 FOOT ON CENTER SPACING. SEE SHEET SD2.
 - EXPANSION JOINT AND CONTRACTION JOINTS FOR WALLS AND FOOTING SHALL BE ALIGNED WITH EACH OTHER. SEE SHEET SD2.

CITY OF SAMMAMISH APPROVAL

City Engineer: [Signature] 11-10-16 Date
Community Development: [Signature] 11-10-16 Date

DPER ACTIVITY NUMBER
GRDE14-0052 / SHORE14-0022
FEDERAL AID # CM-2017(133)

PLOTTED BY: purgobut DATE: Thursday, November 03, 2016 10:53:39 AM
 PATH: U:\P20\Projects\Shore\1521-KingCo\554-1521-075-ELST\999\sva\CAD\Phase 20\Trak 03\DWG

| REVISIONS | DATE | BY | DESIGNED |
|-----------|---------|----|----------------------|
| 2 | 11/7/16 | CB | S. BROWN/C. BUITRAGO |
| | | | B. PURGANAN |
| | | | R. CUSHMAN |
| | | | O. KIKUTA |

ONE INCH AT FULL SCALE, IF NOT, SCALE ACCORDINGLY

FILE NAME: BL1521075P20T03DD-01

JOB No. 554-1521-075 P20T03

DATE: JANUARY 2016

11/3/16

11-3-2016

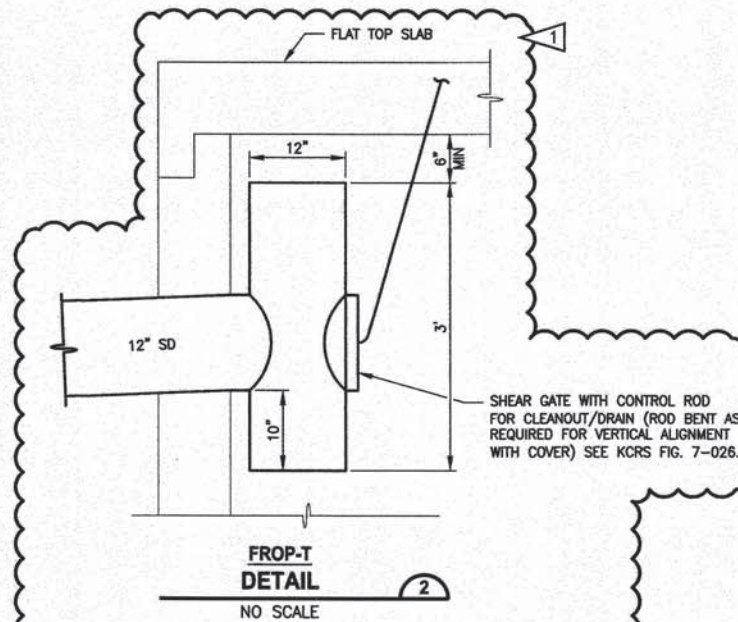
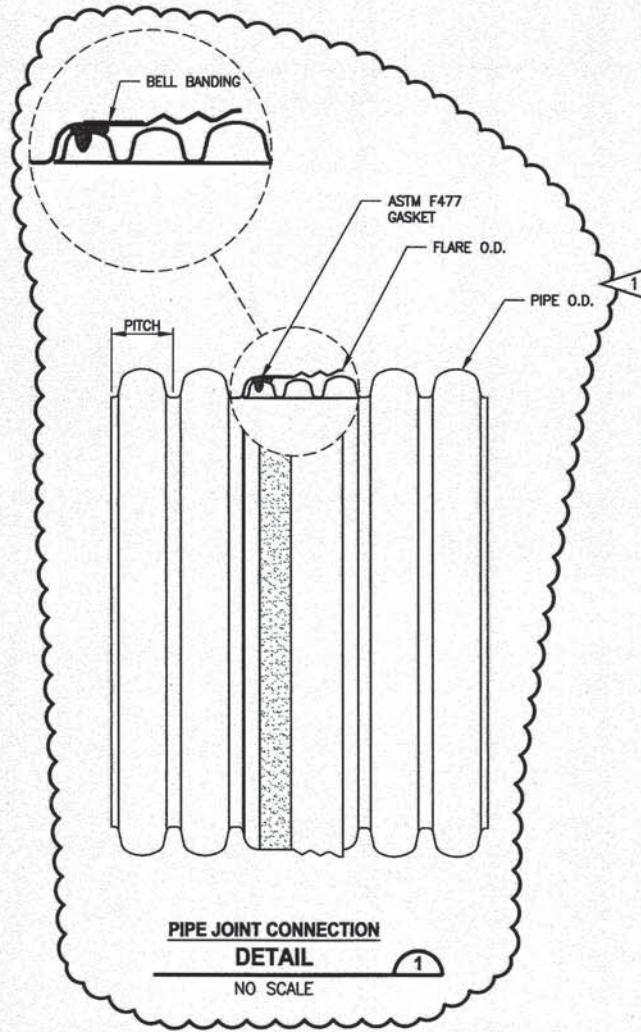
Parametrix
ENGINEERING, PLANNING, ENVIRONMENTAL SCIENCES

719 2ND AVENUE, SUITE 200 | SEATTLE, WA 98104
P 206.394.3700
WWW.PARAMETRIX.COM

PROJECT NAME
**EAST LAKE SAMMAMISH
MASTER PLAN TRAIL
SOUTH SAMMAMISH SEGMENT A**
SAMMAMISH, WA

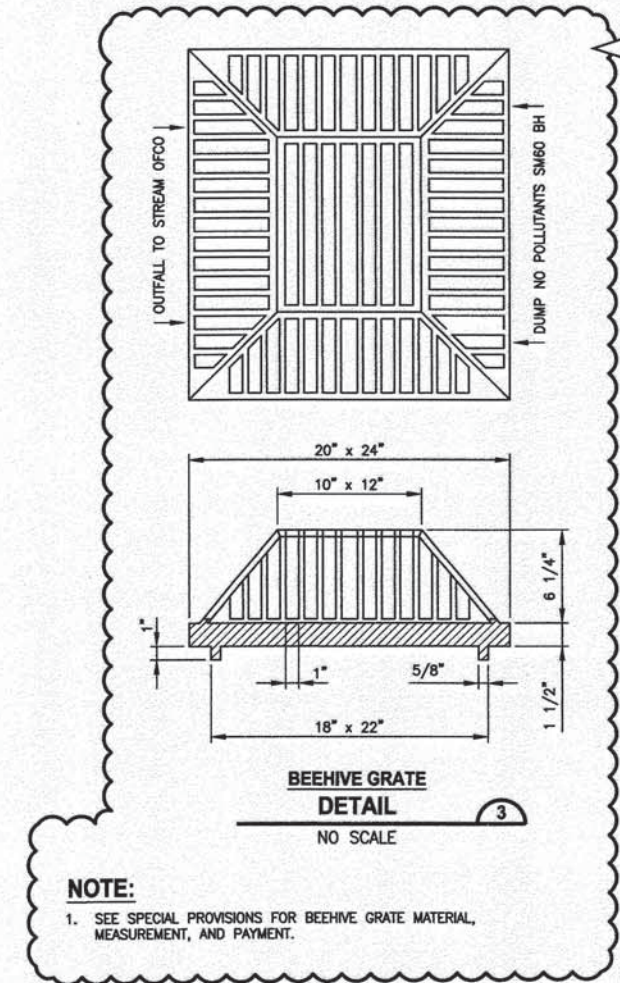
DRAINAGE DETAILS

SHEET NO.
42 OF 78
DD1



NOTES:

1. FROP-T SHALL CONFORM TO RESTRICTOR DETAIL KCRS FIG. 7-025 WITH THE SPECIFIC CHANGES PROVIDED IN DETAIL 2.
2. FROP-T SHALL NOT HAVE ELBOW RESTRICTORS.
3. FROP-T SHALL NOT HAVE A RESTRICTOR PLATE ON THE BOTTOM END. THE TOP AND BOTTOM ENDS SHALL BE OPEN.
4. TOP OF FROP-T SHALL HAVE A MINIMUM OF 6 IN. VERTICAL CLEARANCE FROM INTERIOR OF CATCH BASIN WALL.
5. PROVIDE AT LEAST ONE 3 X 0.090 GAUGE SUPPORT BRACKET ANCHORED TO THE CONCRETE WALL WITH 5/8 IN. STAINLESS STEEL EXPANSION BOLTS OR EMBEDDED SUPPORTS 2 IN. INTO CATCH BASIN WALL (VERTICAL SPACING).
6. THE FROP-T SHALL BE FABRICATED FROM 0.060" CORRUGATED ALUMINUM ALLOY DRAIN PIPE, OR 0.064" CORRUGATED ALUMINIZED STEEL DRAIN PIPE, OR 0.060" ALUMINUM ALLOY FLAT SHEET, IN ACCORDANCE WITH ASTM B 209, 5052 H32 OR EPS HIGH DENSITY POLYETHYLENE STORM SEWER PIPE



NOTE:

1. SEE SPECIAL PROVISIONS FOR BEEHIVE GRATE MATERIAL, MEASUREMENT, AND PAYMENT.

LAYOUT: DD2 PATH: U:\P20\Projects\Clients\1521-Kingco\554-1521-075-ELST\996\CAAD\Phase 20\Task 03\DWG\ PLOTTED BY: purgabot DATE: Thursday, April 07, 2016 4:21:36 PM

| REVISIONS | DATE | BY | DESIGNED |
|-------------|--------|----|--------------------|
| 1 | 4/6/16 | CB | C. BUITRAGO |
| ADDENDUM #2 | | | |
| | | | DRAWN B. PURGANAN |
| | | | CHECKED R. CUSHMAN |
| | | | APPROVED O. KIKUTA |

ONE INCH AT FULL SCALE, IF NOT, SCALE ACCORDINGLY
FILE NAME: BL1521075P20T03DD-01
JOB No. 554-1521-075 P20T03
DATE: JANUARY 2016



Parametrix
ENGINEERING · PLANNING · ENVIRONMENTAL SCIENCES
719 2ND AVENUE, SUITE 200 | SEATTLE, WA 98104
P 206.394.3700
WWW.PARAMETRIX.COM

PROJECT NAME
**EAST LAKE SAMMAMISH
MASTER PLAN TRAIL
SOUTH SAMMAMISH SEGMENT A**
SAMMAMISH, WA

DPER ACTIVITY NUMBER
GRDE14-0052 / SHORE14-0022
FEDERAL AID # CM-2017(133)

CITY OF SAMMAMISH APPROVAL
City Engineer: [Signature] Date: 11-10-16
Community Development: [Signature] Date: 11-10-16

DRAINAGE DETAILS

SHEET NO.
43 OF 78
DD2