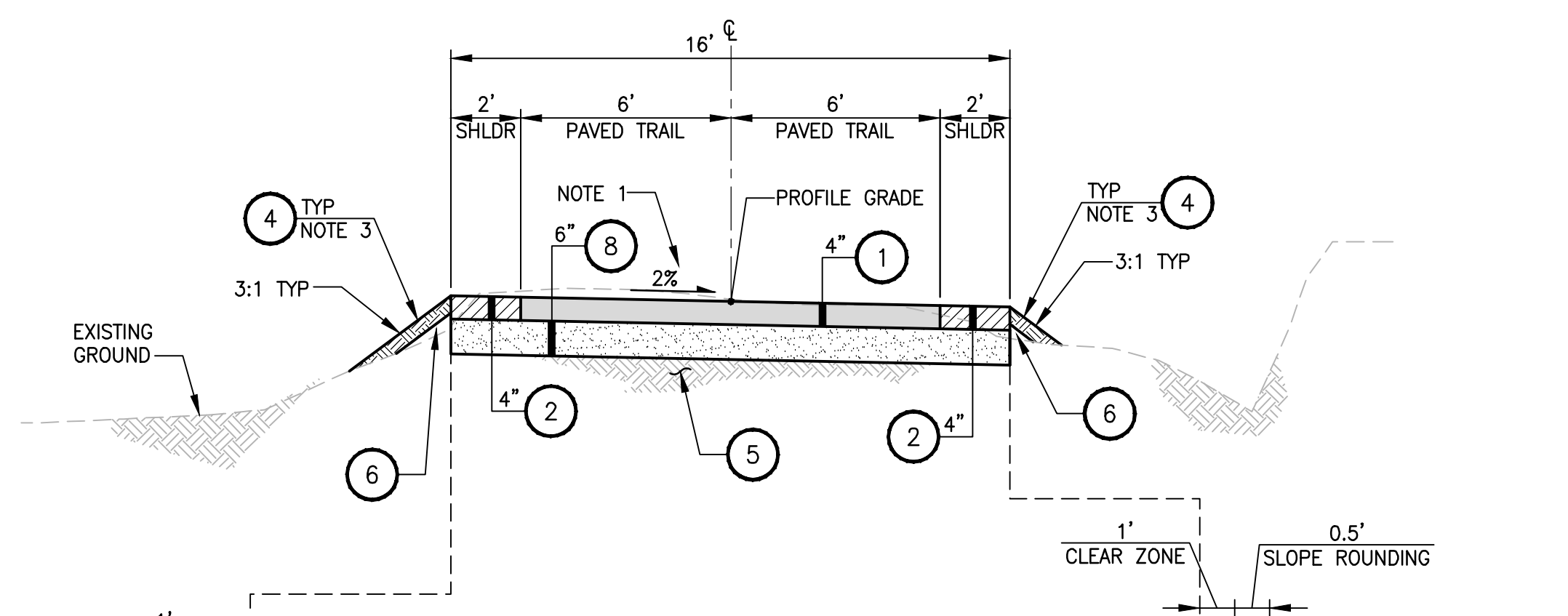
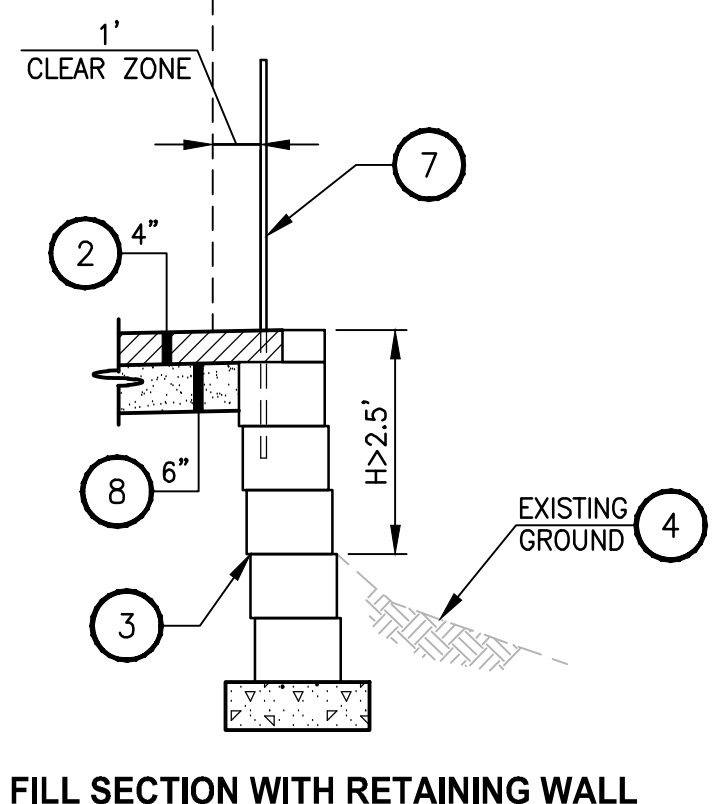
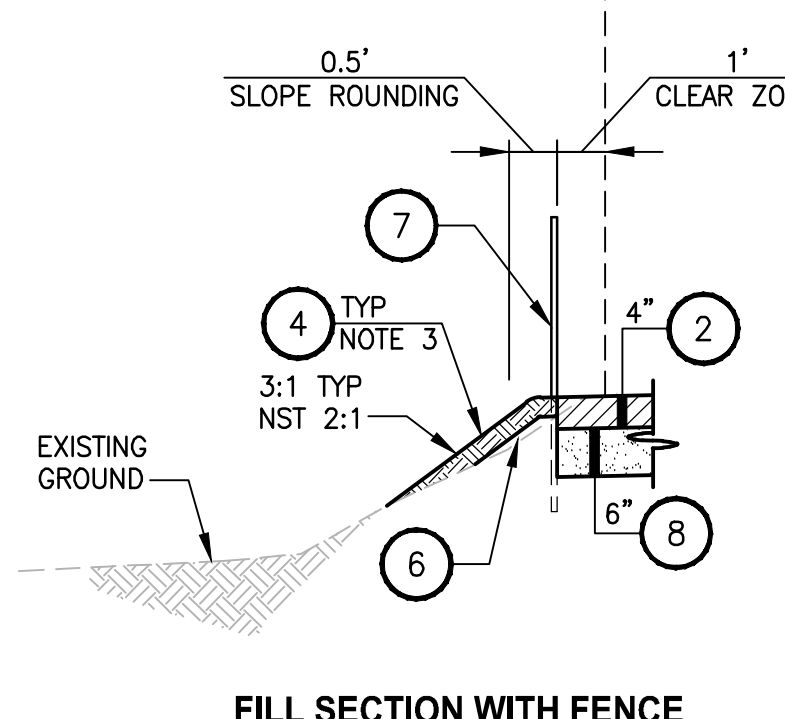
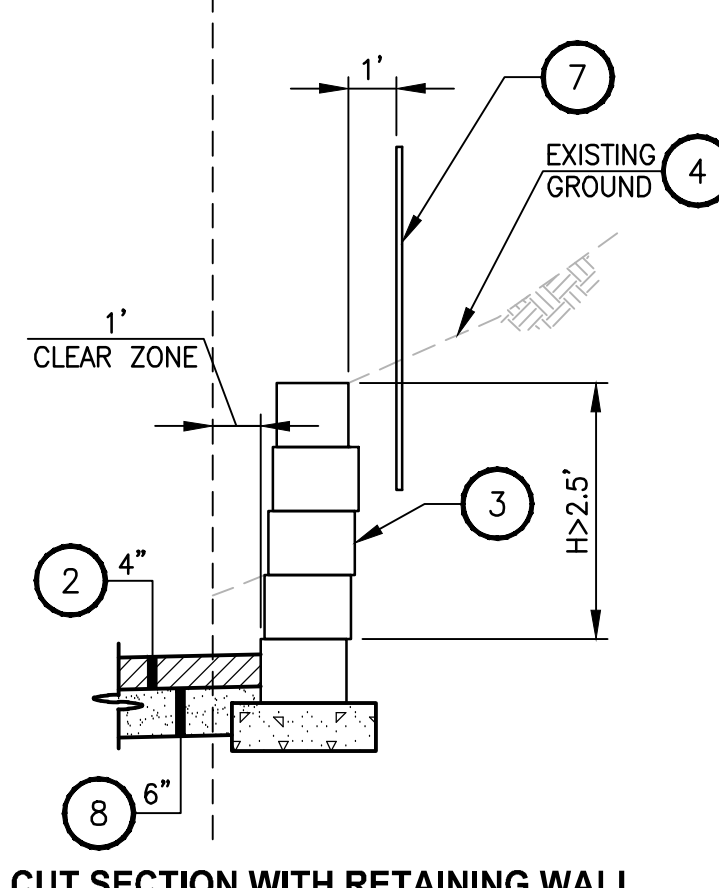
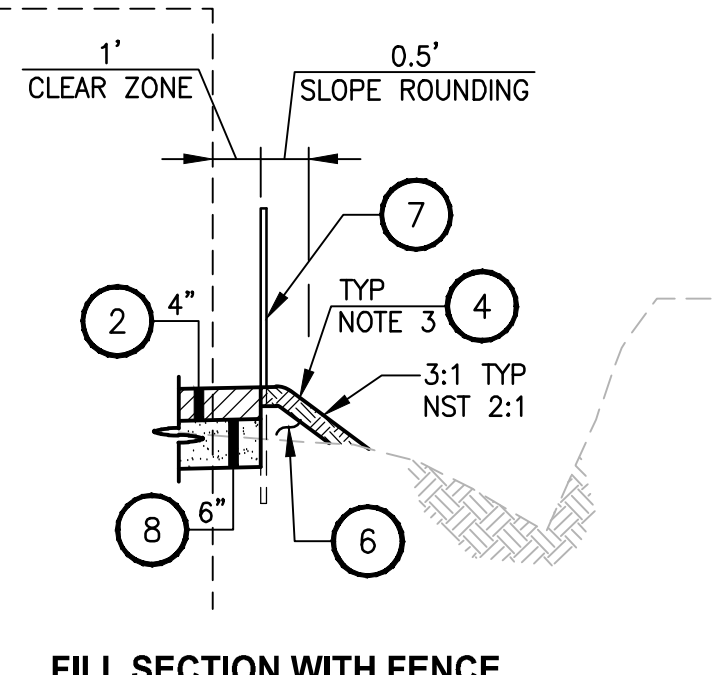
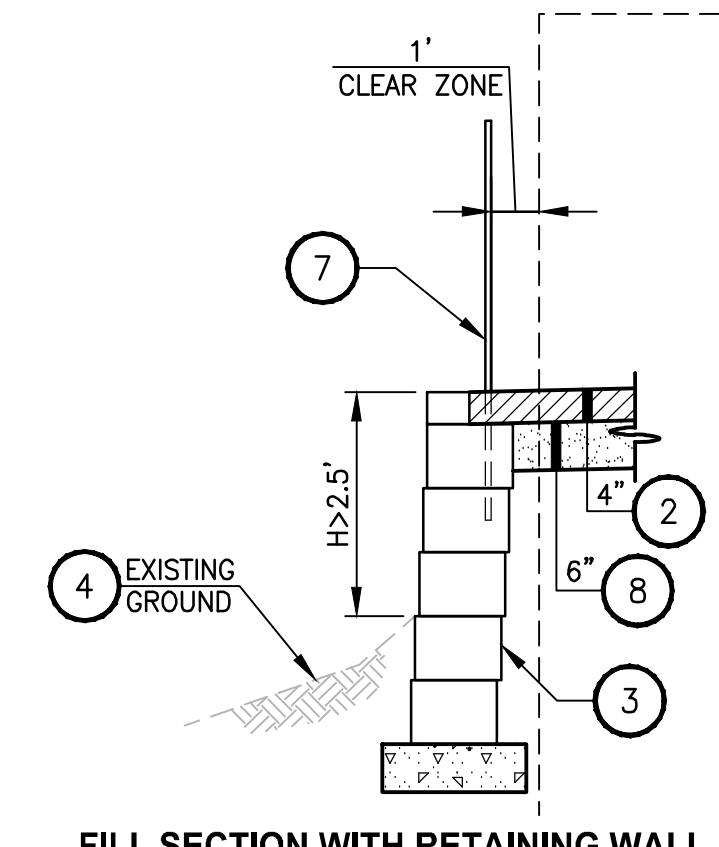


PATH: U:\P50\Projects\Clients\1521-075-ELST\985\Drawings\Phase 19\T03 Civil\Draw-Phase1\ PLOTTED BY: purgabut DATE: Friday, November 13, 2020 9:11:18 AM LAYOUT: CSI



**B-LINE STA 283+20 TO STA 298+83
B-LINE STA 300+45 TO STA 309+21
B-LINE STA 310+25 TO STA 320+60
B-LINE STA 325+75 TO STA 371+71**
SECTION WITHOUT FENCE
TYPICAL SECTION
NOT TO SCALE



CROSS SLOPE SCHEDULE

| ALIGNMENT | STA START | STA END | CROSS SLOPE DIRECTION |
|-----------|-----------|---------|-----------------------|
| B-LINE | 283+00 | 305+00 | LT |
| B-LINE | 305+00 | 325+50 | RT |
| B-LINE | 325+50 | 338+65 | LT |
| B-LINE | 338+65 | 371+03 | RT |
| C-LINE | 371+58 | 375+50 | RT |

INFILTRATION AND UNDERDRAIN TRENCH SCHEDULE

| ALIGNMENT | STA START | STA END | TRENCH | SIDE OF TRAIL |
|-----------|-----------|---------|--------|---------------|
| B-LINE | 283+23 | 287+75 | IT | LT |
| B-LINE | 288+78 | 298+40 | UD | LT |
| B-LINE | 298+79 | 304+38 | UD | LT |
| B-LINE | 305+91 | 307+99 | UD | RT |
| B-LINE | 308+12 | 309+57 | UD | RT |
| B-LINE | 309+61 | 314+43 | UD | RT |
| B-LINE | 319+45 | 320+30 | UD | RT |
| B-LINE | 320+63 | 322+95 | UD | RT |
| B-LINE | 322+99 | 323+72 | GT | RT |
| B-LINE | 323+72 | 324+98 | UD | RT |
| B-LINE | 325+03 | 325+75 | UD | RT |
| B-LINE | 335+29 | 337+75 | IT | LT |
| B-LINE | 338+44 | 347+50 | IT | RT |
| B-LINE | 347+50 | 348+97 | UD | RT |
| B-LINE | 349+00 | 350+34 | UD | RT |
| B-LINE | 350+45 | 351+21 | UD | RT |
| B-LINE | 351+27 | 352+43 | UD | RT |
| B-LINE | 352+56 | 355+01 | UD | RT |
| B-LINE | 355+45 | 359+76 | IT | RT |
| B-LINE | 359+78 | 361+27 | UD | RT |
| C-LINE | 371+78 | 373+14 | UD | RT |
| C-LINE | 373+23 | 375+18 | UD | RT |

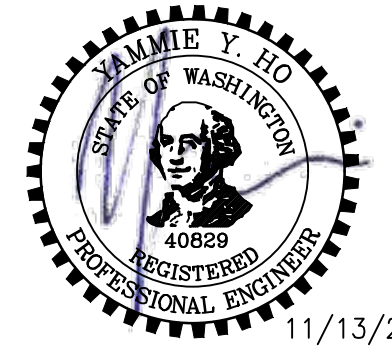
SLOPE PROTECTION SCHEDULE

| ALIGNMENT | STA START | STA END | SIDE OF TRAIL |
|-----------|-----------|---------|---------------|
| B-LINE | 309+22 | 309+71 | LT |
| B-LINE | 321+10 | 323+10 | RT |
| B-LINE | 323+69 | 324+50 | RT |
| B-LINE | 339+25 | 340+63 | LT |

- CONSTRUCTION NOTES:**
- HMA CL. 3/8" PG 64-22.
 - 5/8" MINUS CRUSHED LEDGE ROCK, 100% FRACTURED. SEE SPECIAL PROVISIONS FOR SPECIFICATIONS.
 - RETAINING WALL, SEE AL SHEETS AND WP SHEETS FOR LOCATIONS, PROFILES AND WALL TYPES. SEE SHEET WD1 AND S SHEETS FOR DETAILS.
 - SEE SLOPE RESTORATION TOPSOIL THICKNESS DETAILS ON LA SHEETS.
 - EXISTING BALLAST BASE.
 - SELECT BORROW INCL. HAUL.
 - 2-RAIL FENCE, COATED CHAIN LINK FENCE OR GUARDRAIL. SEE AL PLANS FOR LOCATIONS AND TYPES AND SEE DETAILS ON MD SHEETS.
 - CRUSHED SURFACING BASE COURSE.

- GENERAL NOTES:**
- SEE SHEET CS1 FOR CROSS SLOPE SCHEDULE. SEE DP SHEETS FOR CROSS SLOPE TRANSITIONS AND GRADE BREAKS.
 - SEE UT AND DD1 SHEETS FOR DETAILS WHERE INFILTRATION TRENCH, UNDERDRAIN TRENCH, OR GRAVEL TRENCH IS WITHIN THE SHOULDER. SEE SHEET CS1 FOR INFILTRATION, UNDERDRAIN, AND GRAVEL TRENCH SCHEDULE FOR LOCATION AND TYPE.
 - SEE SHEET CS1 FOR SLOPE PROTECTION SCHEDULE AND DETAIL ON SHEET MD4.
 - TRANSITION FROM 2% TO 6:1 SHALL HAVE A MINIMUM LENGTH OF 10 FEET.

CONFORMED DRAWING



ONE INCH AT FULL SCALE. IF NOT, SCALE ACCORDINGLY.
FILE NAME: BL1521075P19T03CS-01
JOB No.: 54-1521-075 P19 T03
DATE: NOVEMBER 2020

| REVISIONS | DATE | BY | DESIGNED |
|-----------|------|----|-------------|
| | | | M. TSUN |
| | | | B. PURGANAN |
| | | | Y. HO |
| | | | J. BAILEY |

Parametrix
ENGINEERING · PLANNING · ENVIRONMENTAL SCIENCES
719 2ND AVENUE, SUITE 200 | SEATTLE, WA 98104
P 206.394.3700
WWW.PARAMETRIX.COM

PROJECT NAME
**EAST LAKE SAMMAMISH
MASTER PLAN TRAIL
SOUTH SAMMAMISH SEGMENT B - PHASE 1**
SAMMAMISH, WA

TYPICAL CROSS SECTIONS
CS1

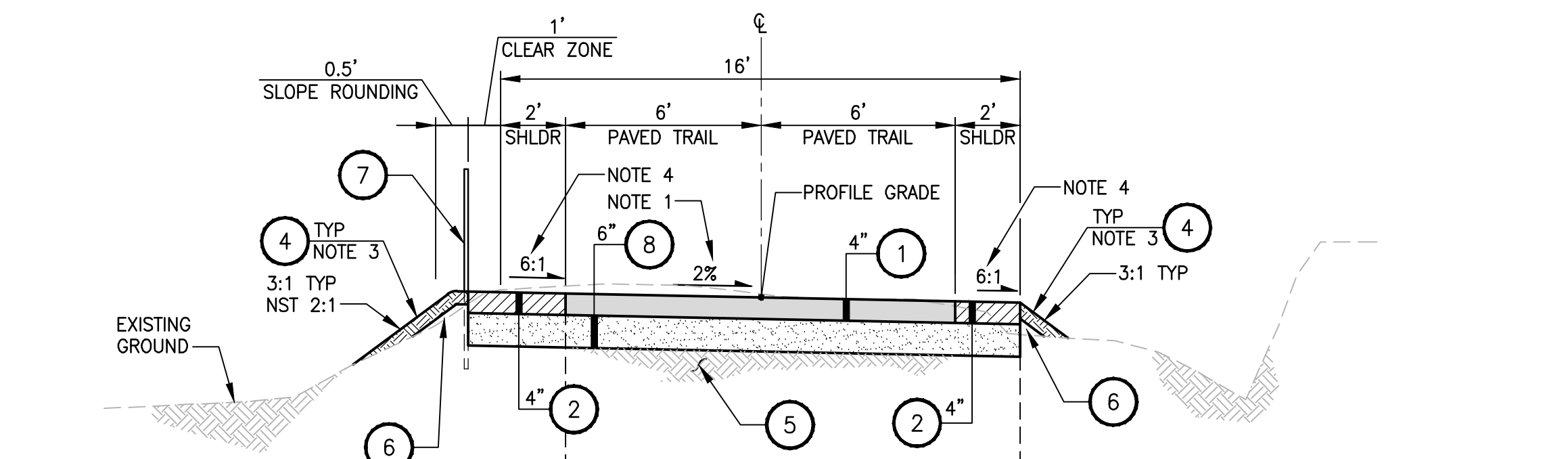
SHEET NO.
21 OF 190

CITY OF SAMMAMISH APPROVAL

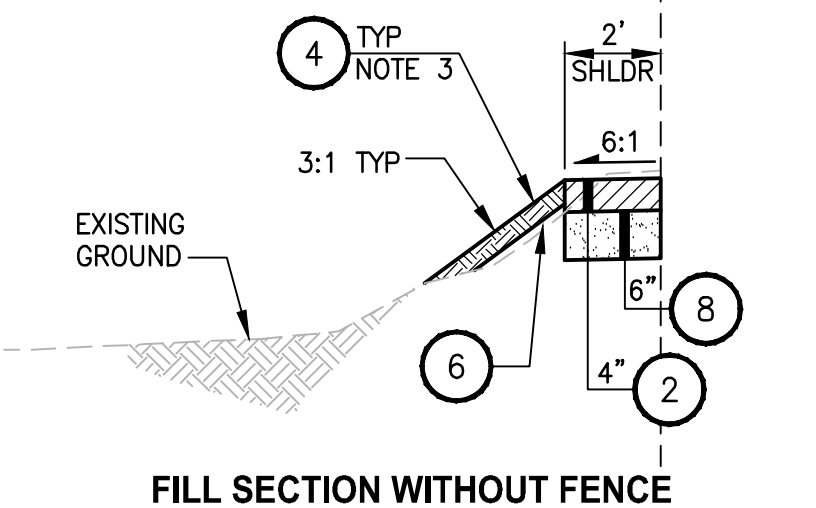
PLANNING DEPT. APPROVAL
BY: Abaty
DATE: 06/10/2021
Community Dev

CITY OF SAMMAMISH PUBLIC WORKS DEVELOPMENT REVIEW
These drawings have been reviewed for compliance with City of Sammamish Clearing and Grading and Stormwater requirements and also in accordance with the requirements as established in the Settlement Agreement between King County vs. City of Sammamish No. C17-0921 JCC and King County vs. City of Sammamish No. 17-2-29922-7 SEA and have been deemed ACCEPTABLE. The reviewer accepts no responsibility for any errors and/or omissions made by the preparer of these drawings.
10 June 2021

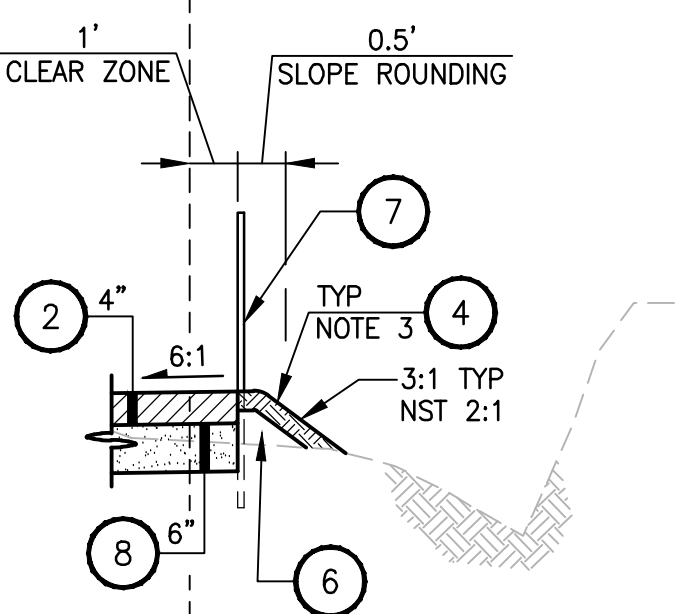
PATH: U:\PSO\Projects\Clients\1521-KingCo\554-1521-075-ELST\995\Drawings\Phase 19\T03 Civil\DWG-Phase1\ PLOTTED BY: purguban DATE: Friday, November 13, 2020 9:11:24 AM LAYOUT: CSZ



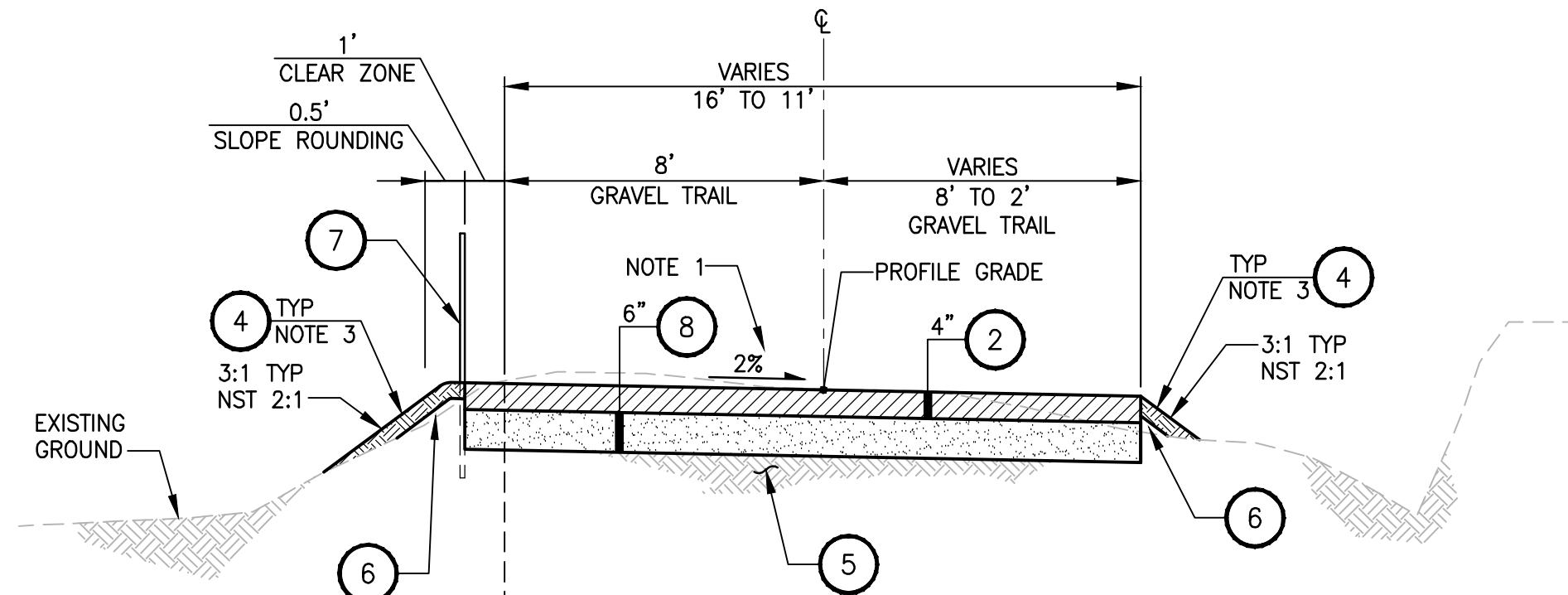
**B-LINE STA 298+83 TO STA 300+45
B-LINE STA 309+21 TO STA 310+25
B-LINE STA 320+60 TO STA 323+10
B-LINE STA 323+69 TO STA 325+75
SECTION WITH 6:1 SHOULDERS
TYPICAL SECTION B**
NOT TO SCALE



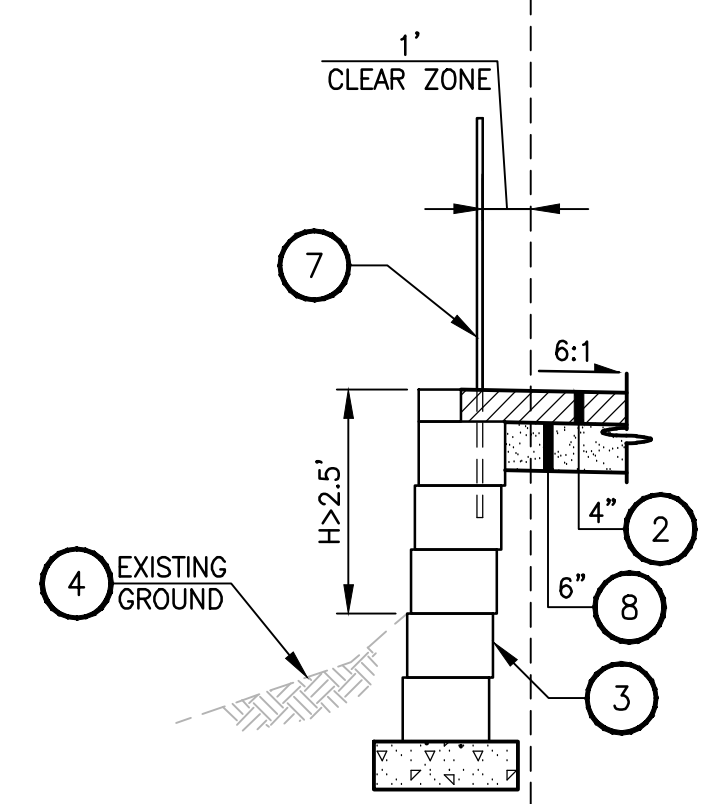
FILL SECTION WITHOUT FENCE



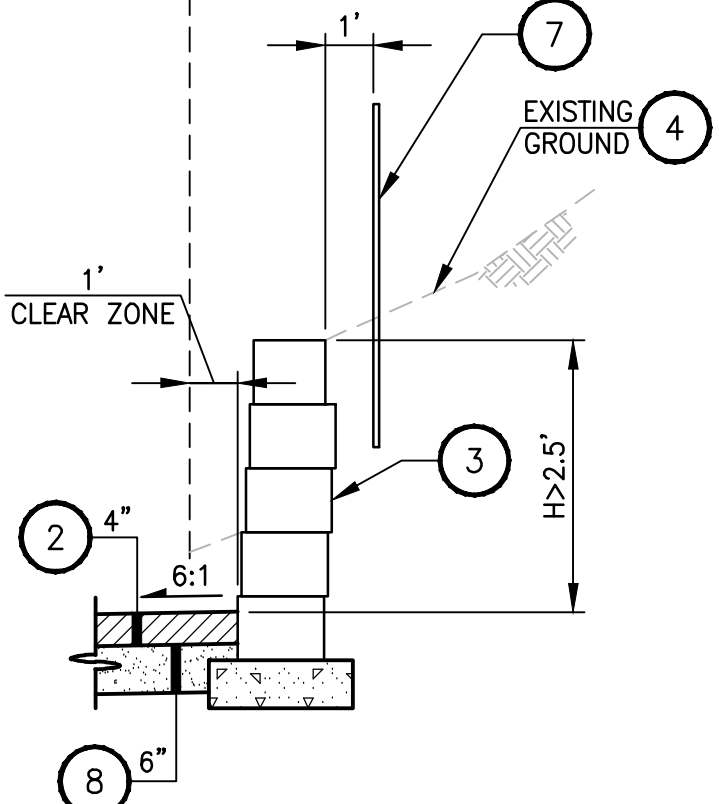
FILL SECTION WITH FENCE



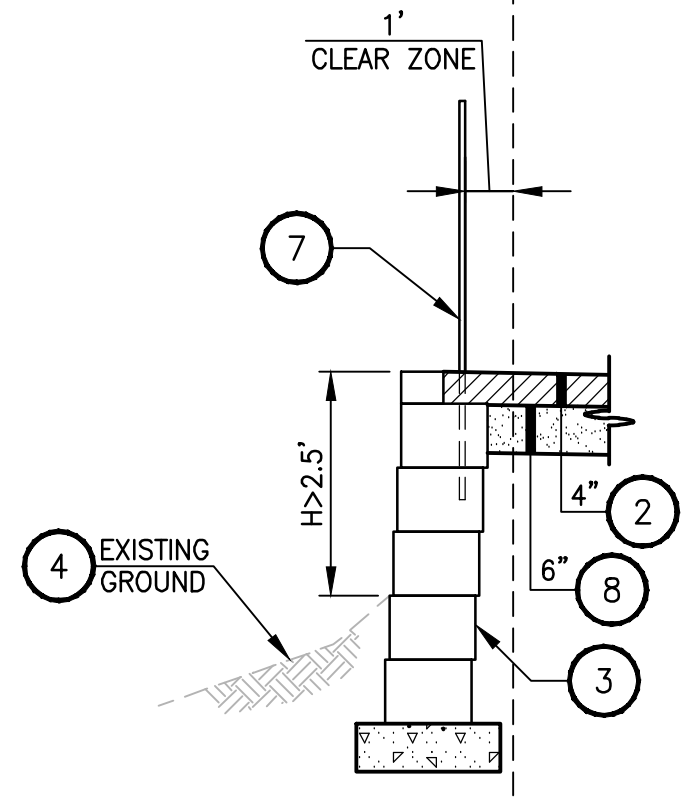
**C-LINE STA 371+71 TO STA 375+50
SECTION WITH FENCE
TYPICAL SECTION C**
NOT TO SCALE



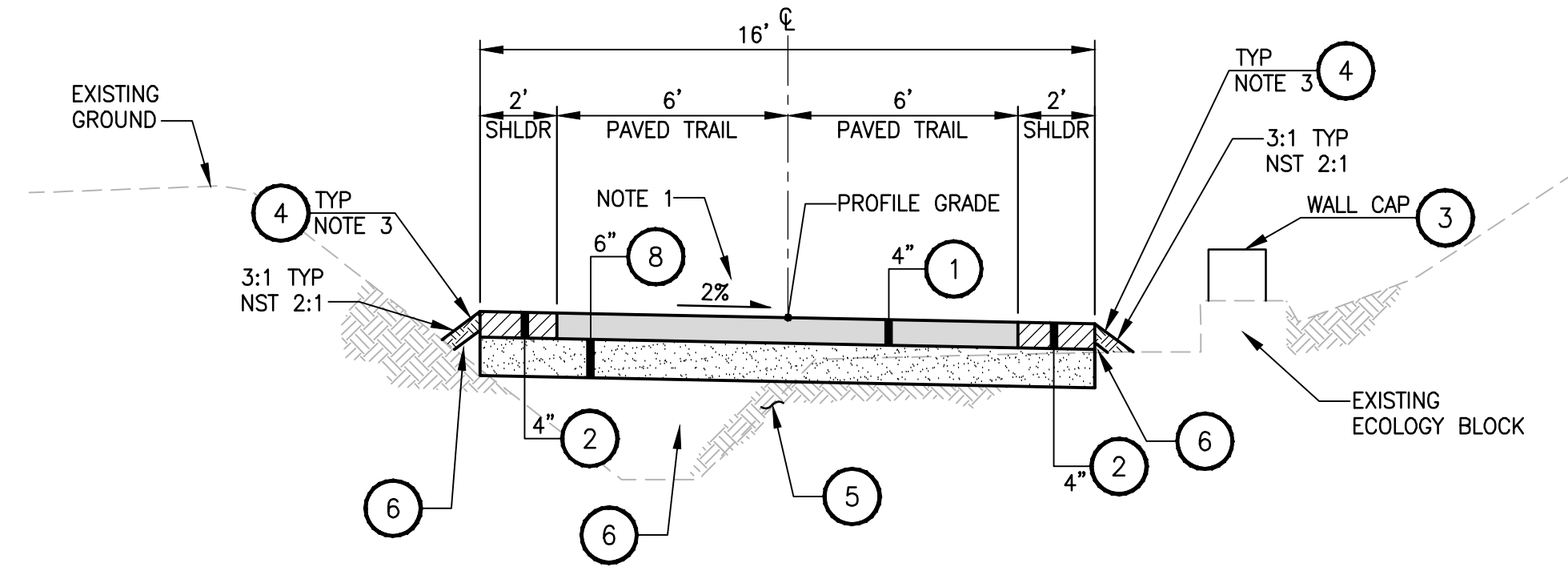
FILL SECTION WITH RETAINING WALL



CUT SECTION WITH RETAINING WALL



FILL SECTION WITH RETAINING WALL



**B-LINE STA 323+10 TO STA 323+69
SECTION WITH EXISTING WALL
TYPICAL SECTION D**
NOT TO SCALE

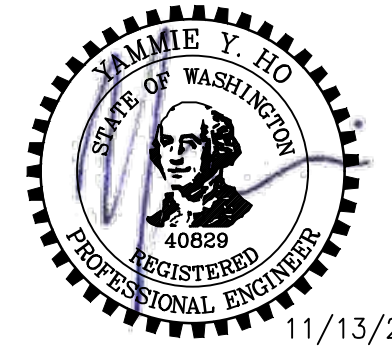
CONSTRUCTION NOTES:

- 1 HMA CL. 3/8" PG 64-22.
- 2 5/8" MINUS CRUSHED LEDGE ROCK, 100% FRACTURED. SEE SPECIAL PROVISIONS FOR SPECIFICATIONS.
- 3 RETAINING WALL, SEE AL SHEETS AND WP SHEETS FOR LOCATIONS, PROFILES AND WALL TYPES. SEE SHEET WD1 AND S SHEETS FOR DETAILS.
- 4 SEE SLOPE RESTORATION TOPSOIL THICKNESS DETAILS ON LA SHEETS.
- 5 EXISTING BALLAST BASE.
- 6 SELECT BORROW INCL. HAUL.
- 7 2-RAIL FENCE, COATED CHAIN LINK FENCE OR GUARDRAIL. SEE AL PLANS FOR LOCATIONS AND TYPES AND SEE DETAILS ON MD SHEETS.
- 8 CRUSHED SURFACING BASE COURSE.

GENERAL NOTES:

- 1. SEE SHEET CS1 FOR CROSS SLOPE SCHEDULE. SEE DP SHEETS FOR CROSS SLOPE TRANSITIONS AND GRADE BREAKS.
- 2. SEE UT AND DD1 SHEETS FOR DETAILS WHERE INFILTRATION TRENCH, UNDERDRAIN TRENCH, OR GRAVEL TRENCH IS WITHIN THE SHOULDER. SEE SHEET CS1 FOR INFILTRATION, UNDERDRAIN, AND GRAVEL TRENCH SCHEDULE FOR LOCATION AND TYPE.
- 3. SEE SHEET CS1 FOR SLOPE PROTECTION SCHEDULE AND DETAIL ON SHEET MD4.
- 4. TRANSITION FROM 2% TO 6:1 SHALL HAVE A MINIMUM LENGTH OF 10 FEET.

CONFORMED DRAWING



11/13/20

Parametrix
ENGINEERING · PLANNING · ENVIRONMENTAL SCIENCES
719 2ND AVENUE, SUITE 200 | SEATTLE, WA 98104
P 206.394.3700
WWW.PARAMETRIX.COM

PROJECT NAME
**EAST LAKE SAMMAMISH
MASTER PLAN TRAIL
SOUTH SAMMAMISH SEGMENT B - PHASE 1**
SAMMAMISH, WA

TYPICAL CROSS SECTIONS

SHEET NO.
22 OF 190
CS2

CITY OF SAMMAMISH APPROVAL

PLANNING DEPT. APPROVAL
BY: ABaty
DATE: 06/10/2021

COMMUNITY DEVELOPMENT APPROVAL
BY: Y. HO
DATE: 06/10/2021

CITY OF SAMMAMISH PUBLIC WORKS DEVELOPMENT REVIEW
These drawings have been reviewed for compliance with City of Sammamish Clearing and Grading and Stormwater requirements and also in accordance with the requirements as established in the Settlement Agreement between King County vs. City of Sammamish No. C17-0921 JCC and King County vs. City of Sammamish No. 17-2-29922-7 SEA and have been deemed ACCEPTABLE. The reviewer accepts no responsibility for any errors and/or omissions made by the preparer of these drawings.
10 June 2021