

2023-2024 Taylor Mountain Activities and News

Public Information Session
April 11, 2023



PARKS

Your Big Backyard

A photograph of a metal bridge over a rocky stream in a forest. The bridge has a corrugated metal deck and dark metal railings. The stream is filled with large, dark rocks and some water. The background shows a dense forest of trees.

Agenda

- 2023 tree-harvesting work
- Forest stewardship and climate resiliency at Taylor Mountain
- Updates on ongoing projects (trails, bridges, summer use)
- Q&A

Question & Answers

We'll have a Q&A session following the presentation.

Ways to participate:

- Raise your hand to be unmuted and ask your question.

If we don't get to all the questions tonight, please email Andrea Godinez, agodinez@kingcounty.gov.

Our Virtual Community

- Turn on “closed captioning” for a live transcript

The facilitator may:

- Interrupt or mute a participant when statements are too lengthy, personally directed, abusive, or obscene
- Remove a participant from the meeting when conduct does not meet ground rules

This meeting is being recorded. I will send the recording and slides from tonight's meeting out to the RSVP list and publish on the Taylor Mountain webpage.

Taylor Mountain Forestry Projects



Grand Ridge

Paul Fischer, Forester

Department of Natural Resources and Recreation

pfischer@kingcounty.gov

206-817-8259

Parks Forest Stewardship

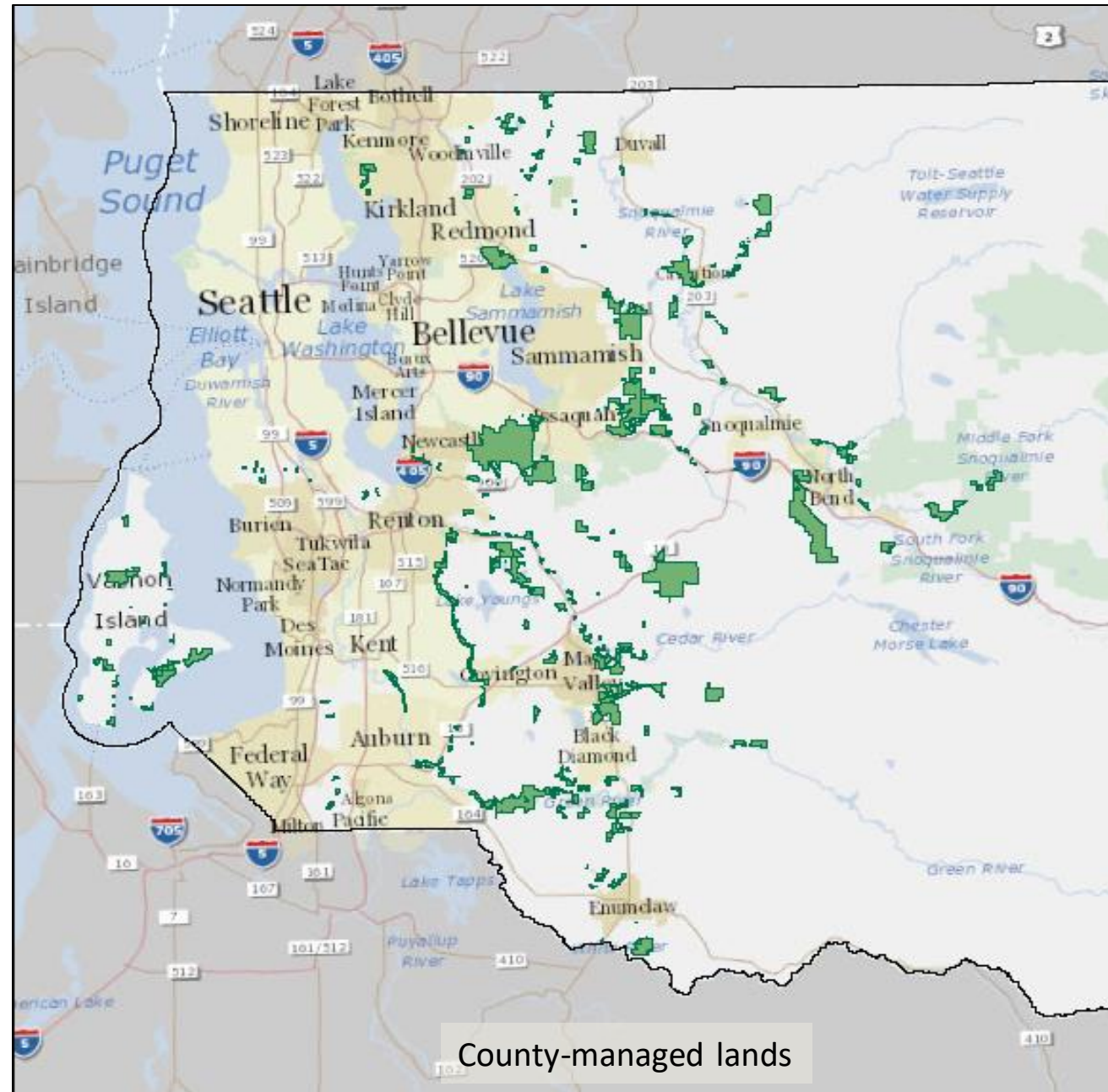
28,000 forested acres

4,305 acres of “working” forest land (15%)

8,200 acres identified as “high priority”
for forest stewardship actions

Strategic Climate Action Plan

30 Year Forest Plan





Taylor Mountain

Climate Resilience Framework

- Altered forest landscape – widespread clearcutting
- Forests today don't resemble original forests
- Uncertain future conditions
- Management objectives are based on modeled future conditions

Desired Future Conditions

Forest is well-suited to site conditions
(soils, elevation, aspect, precipitation)

- Species composition
- Tree density
- Diversity – species, genetic, spatial
- Climate-vulnerable sites, refugia

Working Forest = long-term
sustainable timber harvest



Grand Ridge

Taylor Mtn Forestry Projects

Approx 100 acres of hardwood removal
targeting summer 2023

Objective:

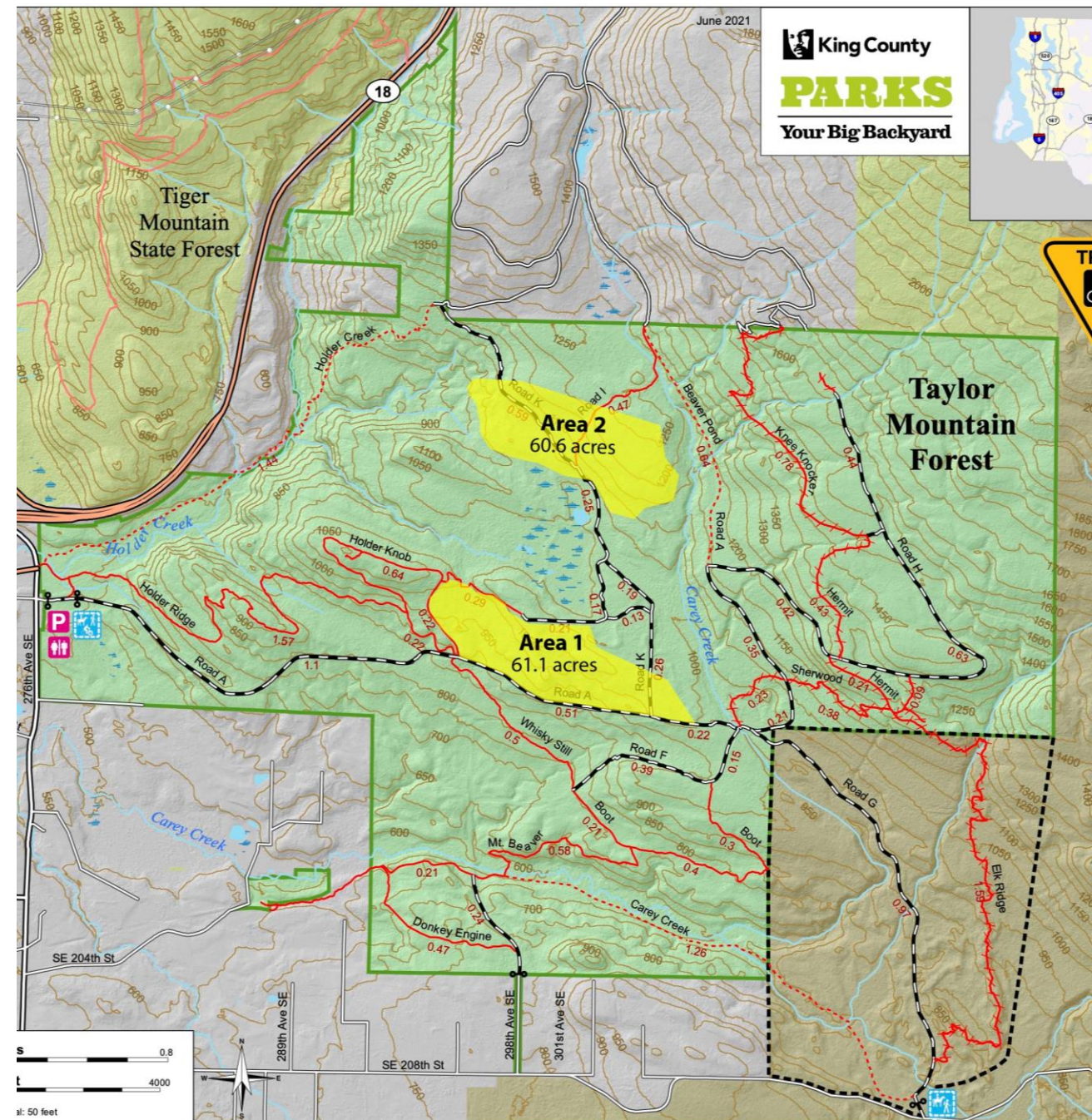
Establish cohort of long-lived native conifers

Current Conditions:

Dense, declining red alder and multi-stem maple with no natural regeneration

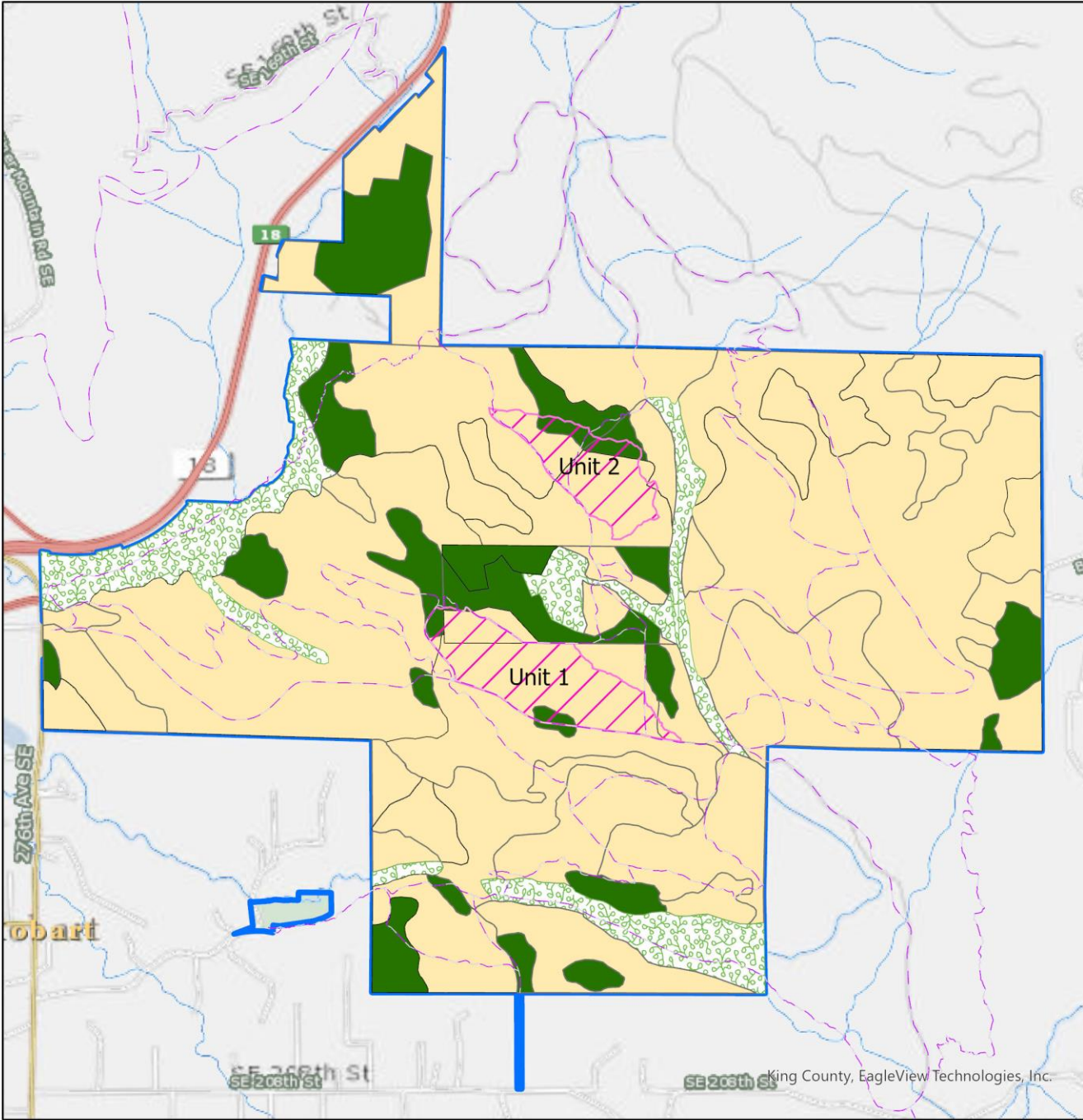
Planned Actions:

- Remove up to 90% of hardwoods (retain biggest and best)
- Retain all conifers
- Replant with native conifers



Draft 2023 Harvest Areas

Taylor Mountain Forestry Projects



Taylor Mountain Forestry Projects

Legend

- KCParks_2021Final
- Trails in King County
- Map point

Symbol

- Mature Conifer
- Mixed Broadleaf
- Mixed Broadleaf-Conifer
- Mixed Conifer-Broadleaf
- Red Alder
- Riparian Mixed Species
- <all other values>
- Taylor 2023 Harvest Units

0 0.5 1 Miles

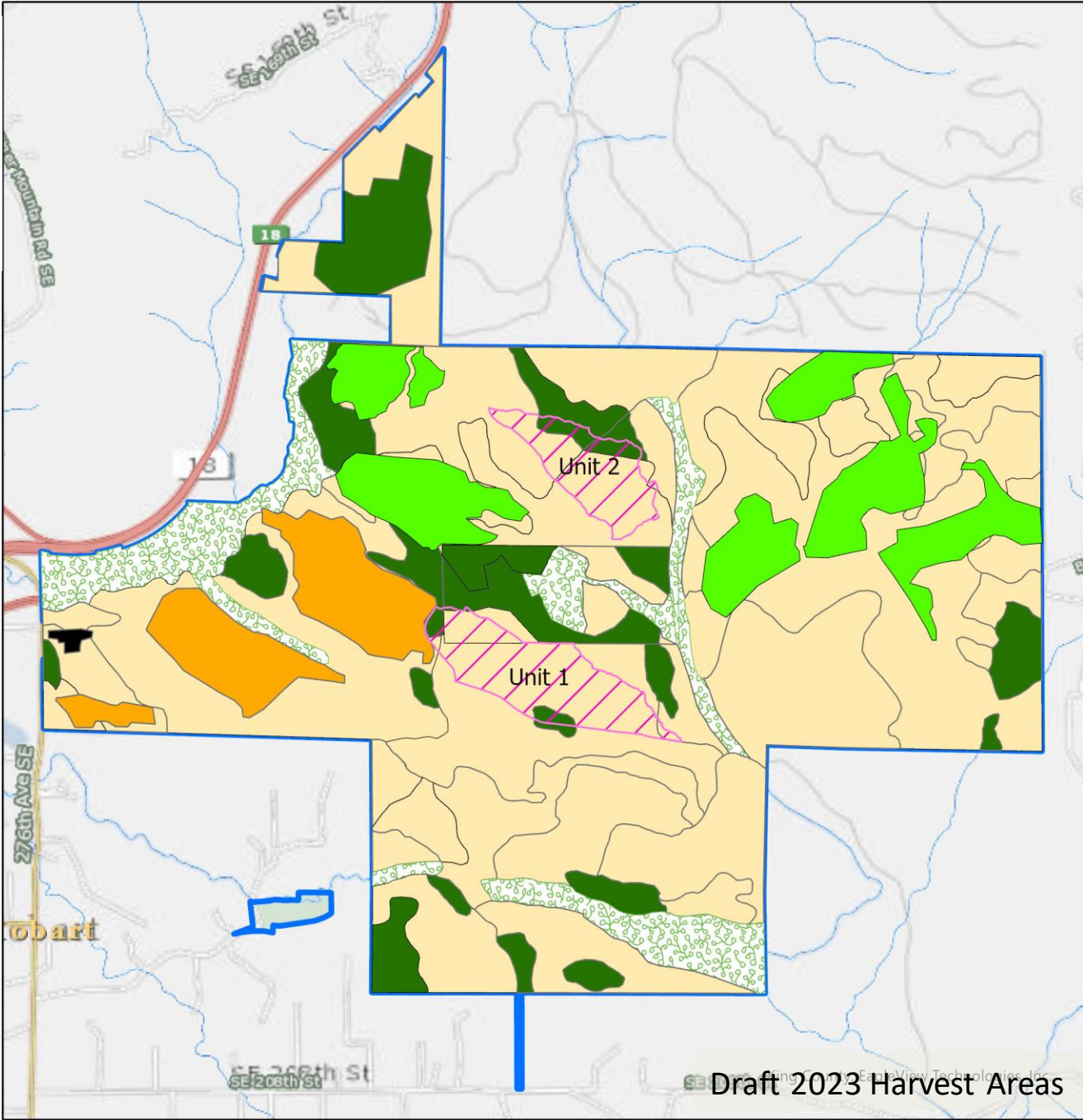
Scale: 1:33,000



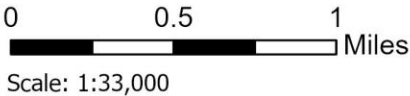
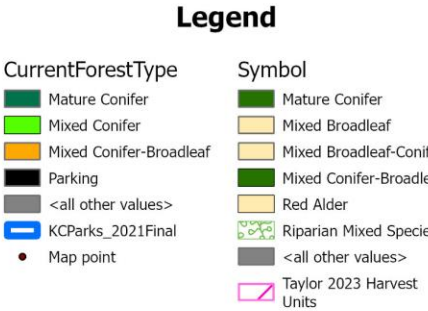
King County

The information included on this map has been compiled by King County staff from a variety of sources and is subject to change without notice. King County makes no representations or warranties, express or implied, as to accuracy, completeness, timeliness, or rights to the use of such information. This document is not intended for use as a survey product. King County shall not be liable for any general, special, indirect, incidental, or consequential damages including, but not limited to, lost revenues or lost profits resulting from the use or misuse of the information contained on this map. Any sale of this map or information on this map is prohibited except by written permission of King County.

Taylor Mountain Forestry Projects



Taylor Mountain Forestry Projects



The information included on this map has been compiled by King County staff from a variety of sources and is subject to change without notice. King County makes no representations or warranties, express or implied, as to accuracy, completeness, timeliness, or rights to the use of such information. This document is not intended for use as a survey product. King County shall not be liable for any general, special, indirect, incidental, or consequential damages including, but not limited to, lost revenues or lost profits resulting from the use or misuse of the information contained on this map. Any sale of this map or information on this map is prohibited except by written permission of King County.

Unit 1 (Main Road A)

Mixed hardwood –
maple, alder, cottonwood



Unit 1 (Main Road A)

Mixed hardwood –
maple, alder, cottonwood



Unit 2 (K Road)

Nearly pure maple

Multi-stem regenerating
from clearcut



Unit 2 (K Road)

Nearly pure maple

Multi-stem regenerating
from clearcut



What to Expect



- Temporary trail closures (no permanent impacts)
- No slash piles
- Looks rough for 1-3 years

Next Few Years (2018 example)

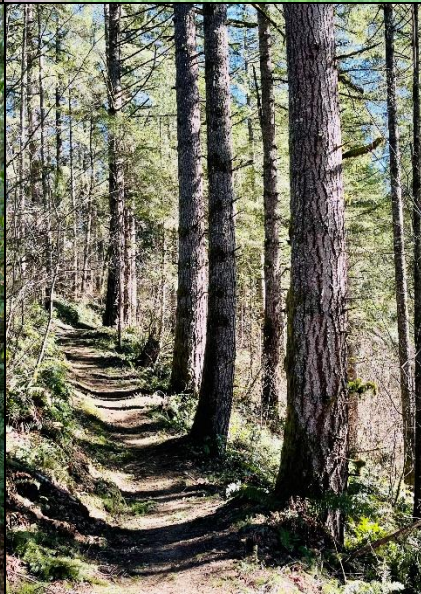


Next 15 Years (Mid-2000s example)



Ongoing Project Updates





King County Parks
Taylor Mountain Forest
Trail System Planning Update

Tom Early
Sam Jarrett
LeeAnne Jensen



King County

PARKS

Your Big Backyard

Taylor Mountain Forest Trails Map



King County

PARKS

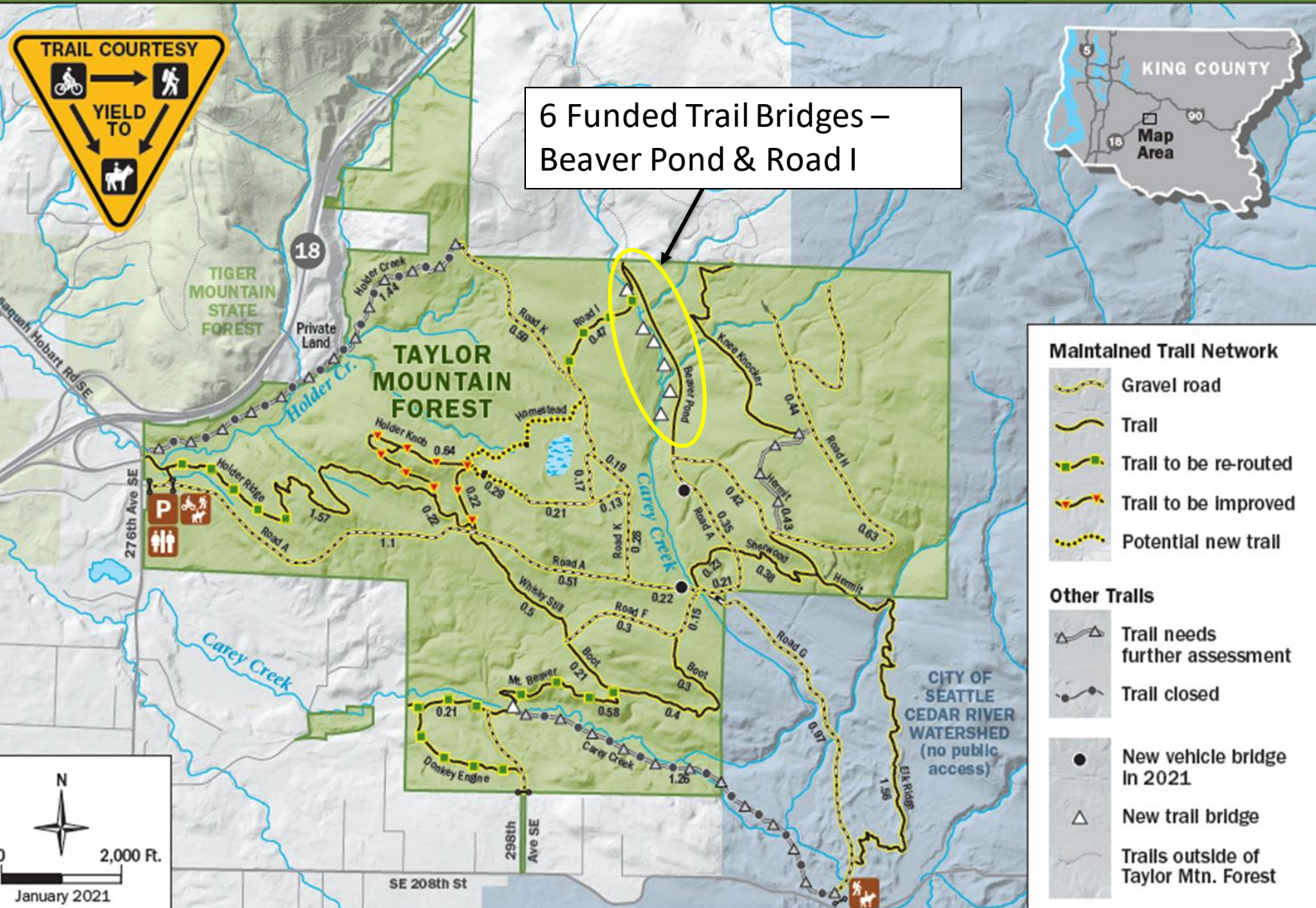
Trail System Planning Update

Recap Prior Planning

**2021 -Began Planning &
Hosted Public Meeting**

High-Level Goals

- Sustainable Trails
 - Reduce maintenance
 - Resource Protection
- Avoid Private Land
- High-Quality User Experience
- 6 Funded Bridges



Trail Bridge Example

Ensuring continued access

- ✓ Long-term resilient infrastructure
- ✓ Resource protection
- ✓ Quality user experience



2022 - Evaluated Trail Solutions

Current Conditions - *Carey Creek & Holder Creek Trails*





2022-2023 Targeted Outreach

Trail Advocacy & Coalition Groups

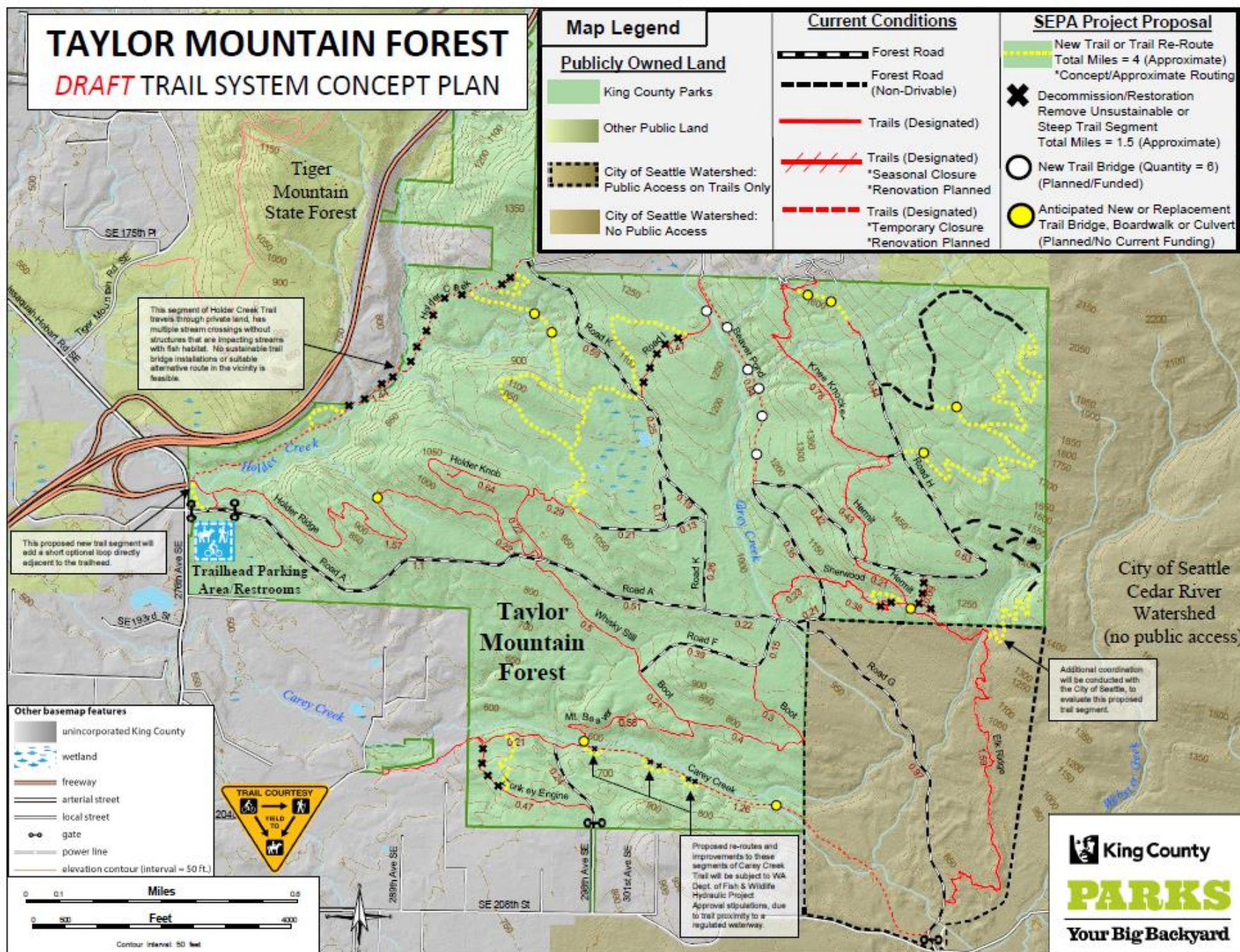
Feedback on DRAFT Trail System Concept Plan



PARKS
Your Big Backyard



- ✓ Trail Planning Feedback
- ✓ Review Bridge Specs

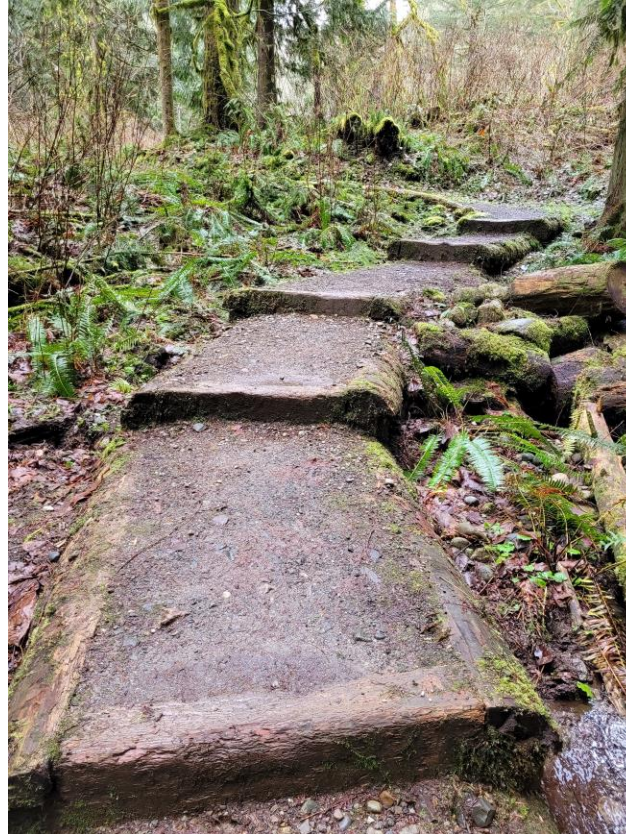


Proposed Trail System Improvements

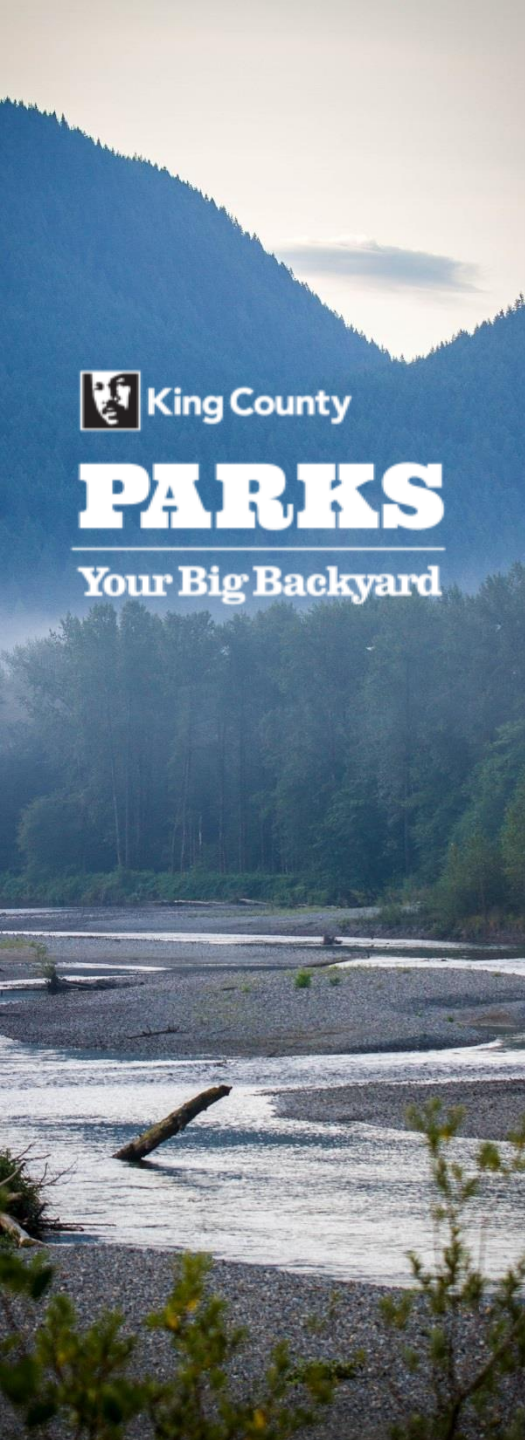
Draft Plan 2023

- Approx. 2.5 Miles Net New Trail Gain
- Create New Loops & Important Connections
- Planned Bridges to Protect Resources/Provide Safety
- Reduce or Eliminate Seasonal Closures

Trail Maintenance Updates



LeeAnne Jensen,
Backcountry Trail Crew Supervisor



Hermit/Sherwood Trails

- Work includes replacing the culvert near the upper junction and tread improvements where the trail became deeply rutted
- Washington Trails Association has recently been hosting volunteer events at Taylor Mountain to help this project along
- Estimated completion: Early May

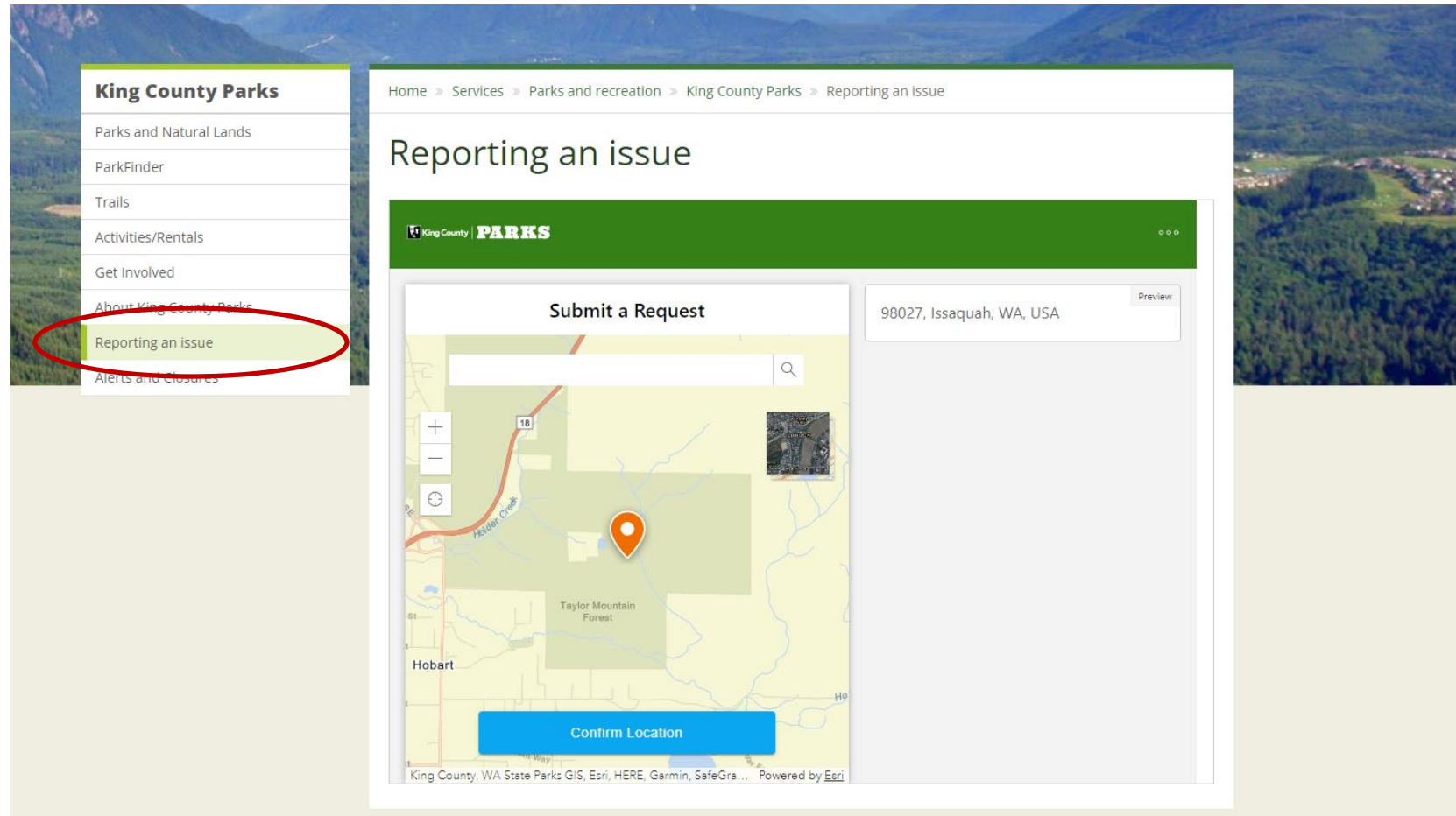
Homestead Trail

- Construction is ongoing, with an emphasis on the South side this summer
- The trail needs tread hardening with gravel and possibly some structures to elevate out of the mud



- Coordinating with Backcountry Horseman of Washington (Tahoma Chapter) to develop a picnic/horse hitching area near lower **Sherwood**
- **Holder Ridge Trail** will continue to be regraded and hardened with gravel throughout the summer
- Standard brushing, blowing for all of the Taylor Trails this summer and fall

See an issue? Report it on See Click Fix



King County Parks

- Parks and Natural Lands
- ParkFinder
- Trails
- Activities/Rentals
- Get Involved
- About King County Parks
- Reporting an issue**
- Alerts and Closures

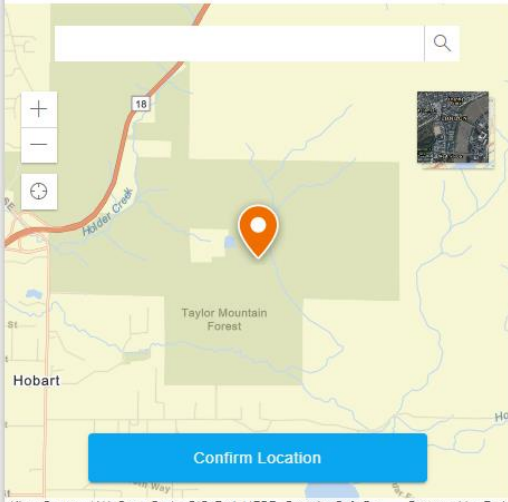
Home » Services » Parks and recreation » King County Parks » Reporting an issue

Reporting an issue

King County PARKS

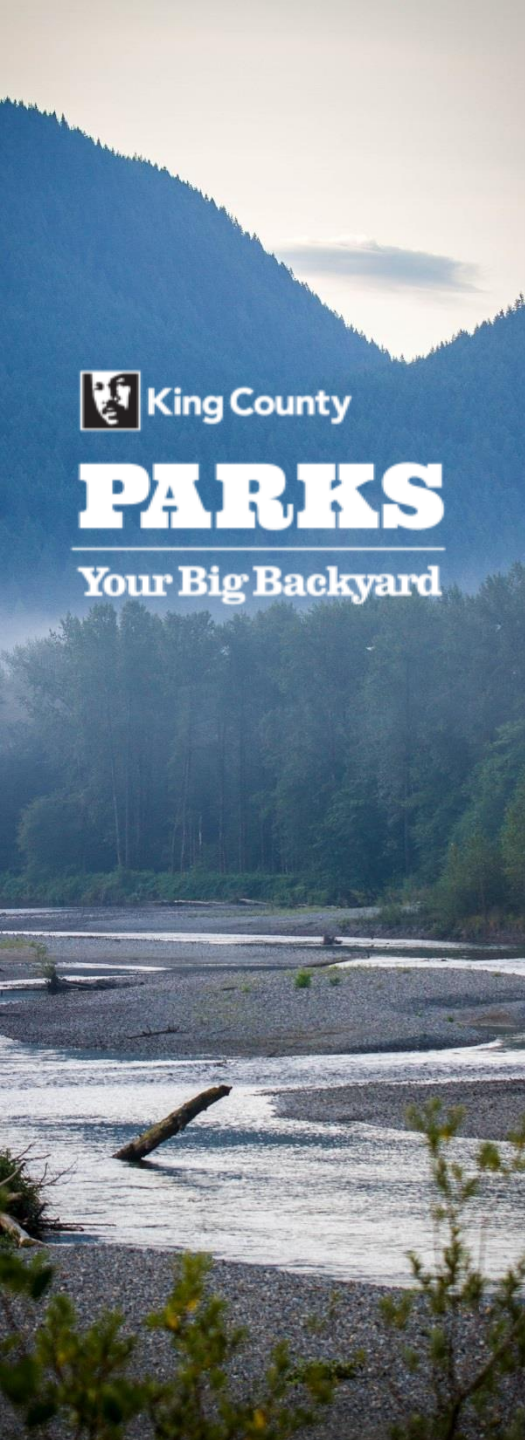
Submit a Request

98027, Issaquah, WA, USA [Preview](#)



Confirm Location

King County, WA State Parks GIS, Esri, HERE, Garmin, SafeGra... Powered by Esri



Questions

Ways to participate:

- We will start with those who have signed up to provide comments
- Raise your hand to be unmuted and ask your question
- Or enter your question in the "Q&A" area of this Zoom meeting



Thank you!

Want to learn more about forest stewardship at Taylor Mountain?

Forestry Walk with Paul

Saturday, April 22, 10 am – 12 pm

Meet at Taylor Mountain parking lot

More info: www.kingcounty.gov/parks/taylormountain

 King County

PARKS

Your Big Backyard