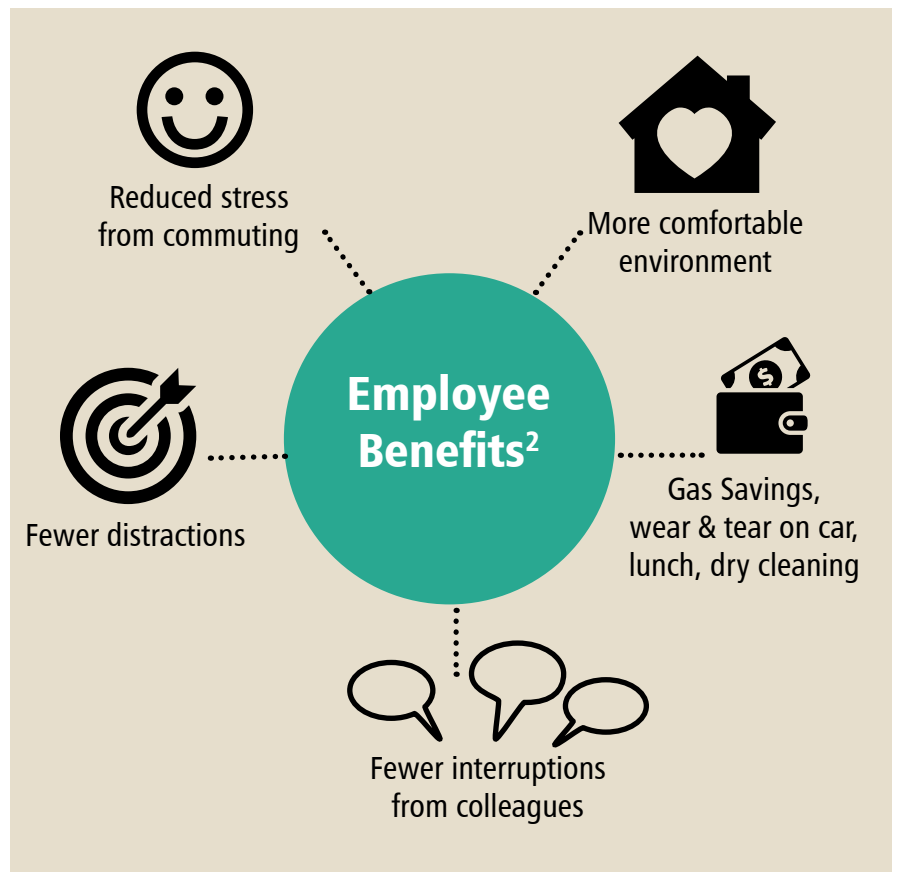
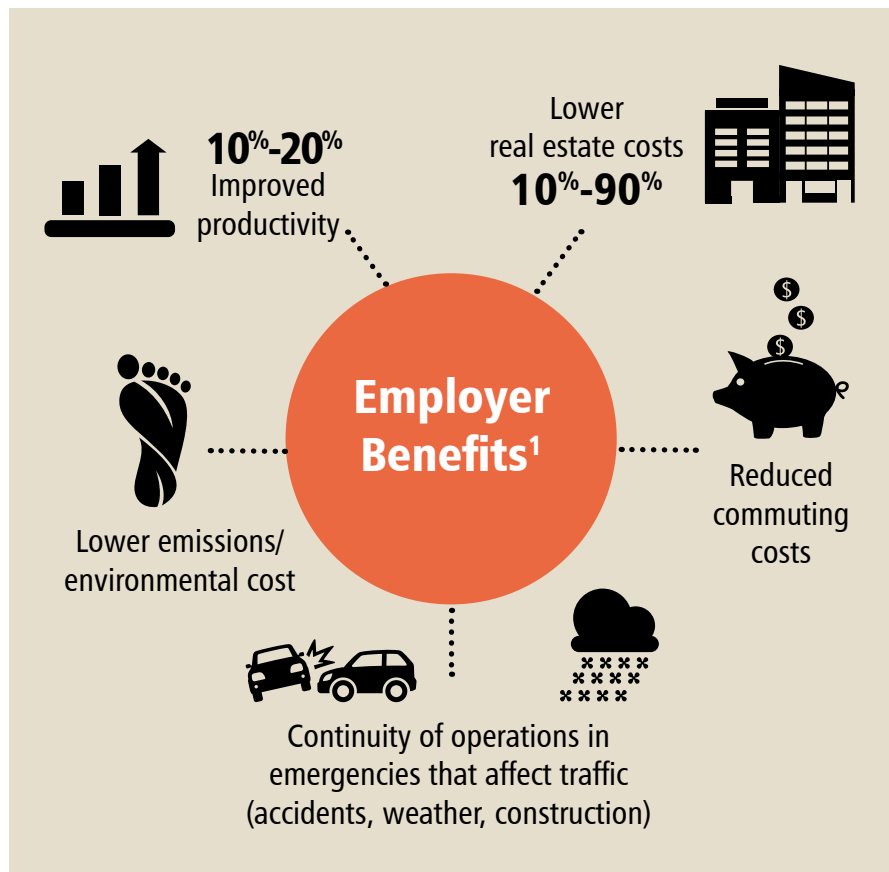


WorkSmart

can help you with implementing or expanding your telework program.



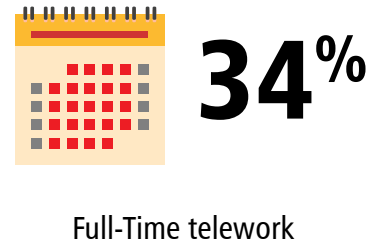
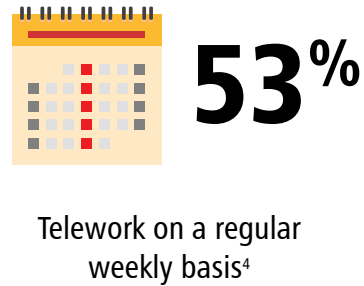
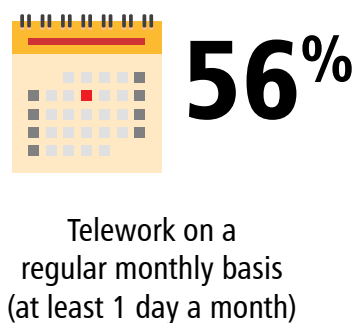
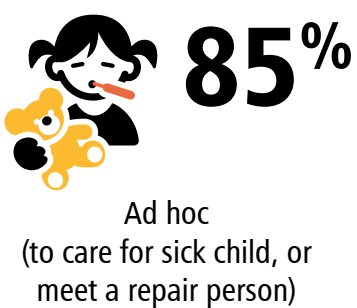
^{1,2}(based on 60+ National Case Studies)

Fortune's Best Workplaces

In the **1980's**, only **two** Fortune's 100 best companies to work for offered **compressed work weeks** and only **three** offered **telework**. In **2016**, **76** offer **compressed work weeks** and **88** offer **telework**.³

³(Fortune Magazine)

Trends in workplace flexibility⁴



⁴(WorldatWork 2015)

Teleworking trends⁵

In King County, **4.3%** of employees at large companies telework, taking **12,000 cars off the roads daily**. 

⁵(2013 CTR Survey)

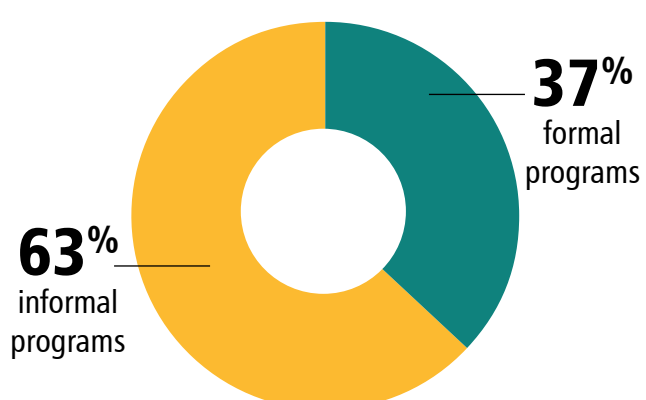


37% of U.S. workers have teleworked - **4 times greater than 1995⁶**

⁶(Gallup Work and Education Poll, 2015)

Why formalize your teleworking program?⁷

A formal program provides policies, procedures and training for the organization and its employees.

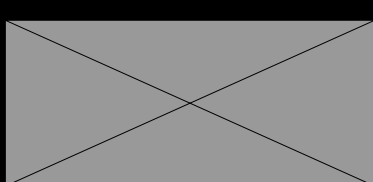


Prevalence of flexibility programs

- 82%** Flex-time (Flexible start/stop times)
- 48%** Shift flexibility
- 48%** Compressed workweeks 4/10, 9/80

⁷(WorldatWork 2015)

worksmart@kingcounty.gov | 206.909.3498



WorkSmart, sponsored by King County Metro, has helped 70+ companies implement telework and flexible schedules. www.kingcounty.gov/telework