



**King County**

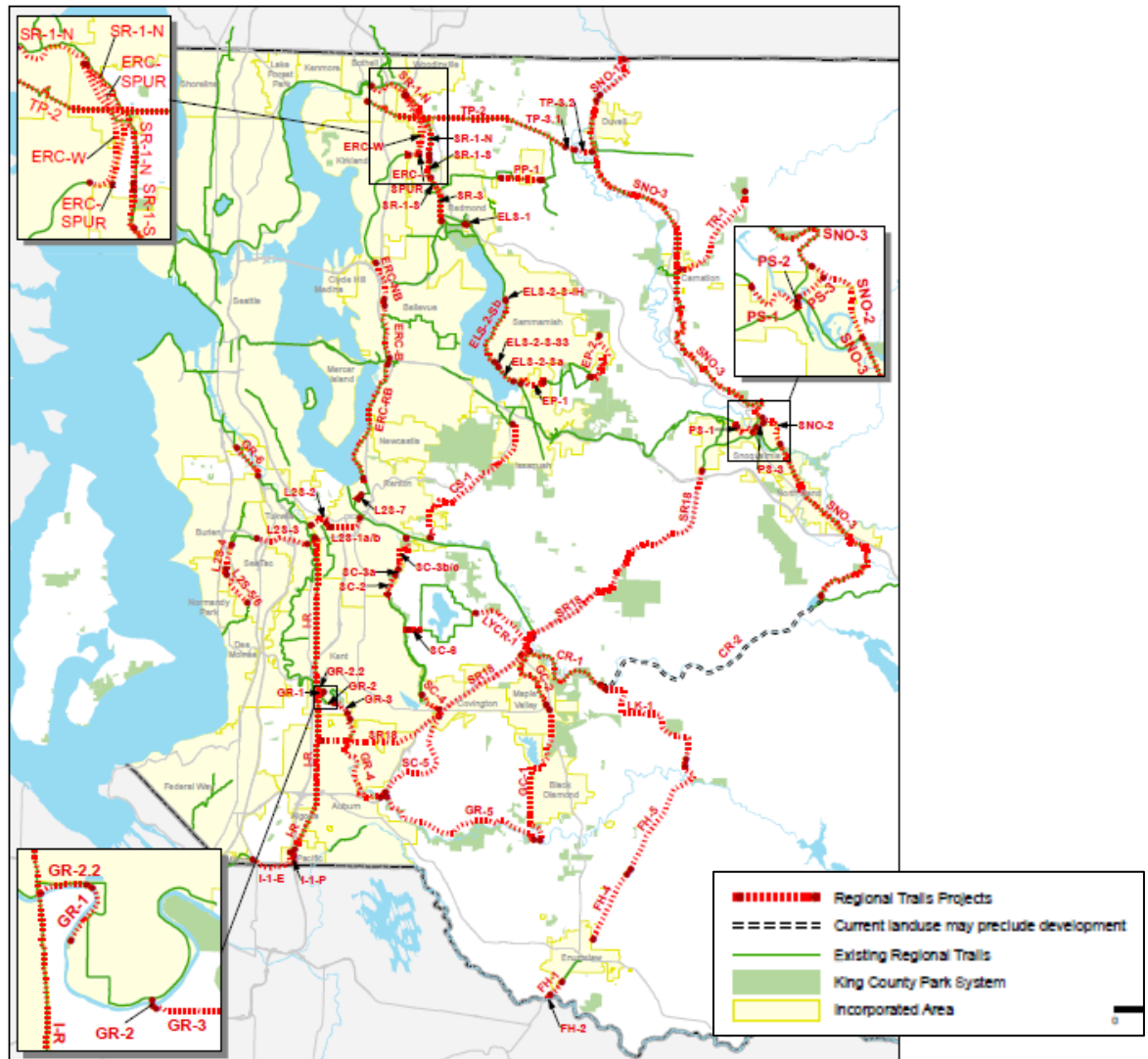
**KING COUNTY  
COMPREHENSIVE PLAN  
2016**

**Technical Appendix  
Regional Trails Needs  
Report**

## Regional Trails Needs Report Attachment

The King County Regional Trail System is one of the nation's most extensive multi-use off-road systems with over 175 miles of trails for bicycling, hiking, walking, and other activities. This developing network provides extensive opportunities for recreation and non-motorized mobility and commuting throughout King County. The following **Regional Trails Needs Report** contains a list of future projects in broad programmatic categories. Each project contains project title, general description, project status and preliminary cost estimates. The **Regional Trails Needs Report** is a component of the King County Comprehensive Plan's Chapter 7: Parks, Open Space and Cultural Resources.

### A. Project Map



### Regional Trails Needs Report

**King County**  
Department of  
Natural Resources and Parks  
Parks and Recreation Division  
June 25, 2015

<http://parksandrec.kingcounty.gov/landuse/Pages/RegionalTrailsNeedsReport.aspx>



- Regional Trails Projects
- Current land use may preclude development
- Existing Regional Trails
- King County Park System
- Incorporated Area

The information included on this map has been compiled by King County staff from a variety of sources and is subject to change without notice. King County makes no representations or warranties, express or implied, as to accuracy, completeness, timeliness, or rights to the use of such information. This document is not intended for use as a survey product. King County shall not be liable for any general, special, indirect, incidental, or consequential damages including, but not limited to, lost revenues or lost profits, resulting from the use or release of the information contained on this map. Any use of this map or information on this map is prohibited except by written permission of King County.

0 5 10 Miles

## B. Project Listing

### REGIONAL TRAILS NEEDS REPORT Projects Listing Summary (July 2015)

Listing Number	RTNR Identification Number	Project Title	Project Type	Comment/Status	UGA Relationship	Regional Transportation Plan Status <sup>(1)</sup>	Approximate Distance (Miles)	Prelim. Total Cost Est. (Low) (2015 - \$M) <sup>(2)(3)</sup>	Prelim. Total Cost Est. (High) (2015 - \$M) <sup>(2)(3)</sup>
<b>Regional Trails System - Legacy Projects</b>									
1	ERC-RB	<b>Eastside Rail Corridor Trail (ERC)</b> , Mainline Renton-Bellevue	Regional Trail	Planning/Design/Construction of paved regional trail, south terminus to approximately Interstate 90.	Inside UGA	Programmed	6.2	21.7	31.0
2	ERC-B	<b>Eastside Rail Corridor Trail (ERC)</b> , Mainline Bellevue Segment	Regional Trail	Planning/Design/Construction of paved regional trail, Interstate 90 to approximately NE 8th Street.	Inside UGA	Programmed	2.7	9.5	13.5
3	ERC-NB	<b>Eastside Rail Corridor Trail (ERC)</b> , Mainline North Bellevue Segment	Regional Trail	Planning/Design/Construction of paved regional trail, approximately NE 8th Street to south Kirkland city boundary.	Inside UGA	Programmed	2.4	8.4	12.0
4	ERC-W	<b>Eastside Rail Corridor Trail (ERC)</b> , Mainline Woodinville	Regional Trail	Planning/Design/Construction of paved regional trail, 132nd Place NE in Kirkland to near Sammamish River in Woodinville.	Inside UGA	Programmed	3.4	11.9	17.0
5	ERC-Spur	<b>Eastside Rail Corridor Trail (ERC)</b> , Woodinville-Redmond Spur	Regional Trail	Planning/Design/Construction of paved regional trail, Mainline Woodinville to NE 124th Street.	Inside UGA	Programmed	3.0	10.5	15.0
6	L2S-2	<b>Lake to Sound Trail</b> , Segment A	Regional Trail	Design/Construction - Black River Forest Segment; Naches Ave to Green River Trail	Inside UGA	Programmed	1.0	3.5	5.0
7	L2S-4	<b>Lake to Sound Trail</b> , Segment B	Regional Trail	Design/Construction - Des Moines Memorial Drive (DMMD), Burien and SeaTac	Inside UGA	Programmed	1.5	5.1	7.3
8	L2S-5/6	<b>Lake to Sound Trail</b> , Segment C	Regional Trail	Design/Construction - DMMD to Des Moines Creek @ S. 200th	Inside UGA	Programmed	2.4	8.4	12.0
9	L2S-1a	<b>Lake to Sound Trail</b> , Segment D	Regional Trail	Design/Construction - West Renton Downtown	Inside UGA	Programmed	1.5	5.3	7.5
10	L2S-1b	<b>Lake to Sound Trail</b> , Segment E	Regional Trail	Design/Construction - East Renton Downtown	Inside UGA	Programmed	0.5	1.8	2.5
11	L2S-3	<b>Lake to Sound Trail</b> , Segment F	Regional Trail	Design/Construction - Tukwila and SeaTac - Green R. Trail to SeaTac Airport	Inside UGA	Programmed	1.0	3.5	5.0
							<b>25.6</b>	<b>89.4</b>	<b>127.8</b>
<b>High Priority Non-Legacy Projects with design and/or construction is programmed in the 2014 - 2019 Capital Improvement Program</b>									
12	ELS-2-Sa	<b>East Lake Sammamish Trail</b> , South Sammamish A	Regional Trail	Continues design /construction of paved masterplanned ELST from south Sammamish city boundary to SE 33rd Street in Sammamish.	Inside UGA	Programmed	1.3	4.6	6.5
13	ELS-2-Sb	<b>East Lake Sammamish Trail</b> , South Sammamish B	Regional Trail	Continues development of paved masterplanned ELST from SE 33rd Street to Inglewood Hill Road	Inside UGA	Programmed	3.4	11.9	17.0

**REGIONAL TRAILS NEEDS REPORT**  
**Projects Listing Summary (July 2015)**

Listing Number	RTNR Identification Number	Project Title	Project Type	Comment/Status	UGA Relationship	Regional Transportation Plan Status <sup>(1)</sup>	Approximate Distance (Miles)	Prelim. Total Cost Est. (Low) (2015 - \$M) <sup>(2)(3)</sup>	Prelim. Total Cost Est. (High) (2015 - \$M) <sup>(2)(3)</sup>
14	ELS-2-S-IH	East Lake Sammamish Trail, Parking - Inglewood Hill <sup>(4)</sup>	Regional Trail Gateway	Design/construction of new parking lot to serve ELST	Inside UGA	N/A	N/A	4.9	4.9
15	ELS-2-S-33	East Lake Sammamish Trail, Parking - SE 33rd Street <sup>(4)</sup>	Regional Trail Gateway	Design/construction of new parking lot to serve ELST	Inside UGA	N/A	N/A	4.5	4.5
16	GC-2	Green to Cedar Rivers Trail, North	Regional Trail	Design/construct Green-to-Cedar Rivers Trail - Retrofit: Paved and Equestrian Trail - Cedar River Trail to Kent-Kangley Rd	Inside UGA	Programmed	3.3	11.6	16.5
17	GC-1	Green to Cedar Rivers Trail, South	Regional Trail	Design/construct paved and soft surface trail from Kent-Kangley Road south to Flaming Geyser State Park along RR corridor and other alignments.	Inside and Outside UGA	Programmed	8.1	28.4	40.5
18	MC-1-12	Mobility Connections, Priority bicycle/pedestrian projects linking RTS to designated Urban Centers and Transit: up to 12 priority projects may be identified and potentially implemented as a high priority. <sup>(5)</sup>	Mobility Connection	Design/construct bicycle/pedestrian mobility connections in public right-of-way linking regional trails with urban centers and transit stations. Projects to be determined.	Inside UGA	N/A	Varies	12.0	24.0
19	L2S-7	Lake to Sound Trail, Segment G	Regional Trail	Design/Construction - Downtown Renton to south terminus of the ERC. Newly-proposed project has yet to be included in regional transportation plan.	Inside UGA	Update to Plan	1.9	6.7	9.5
20	GR-6	Green River Trail, North Extension (Green to Duwamish)	Regional Trail or In-Road Route	Design/construct Green R. Trail to Seattle to connect with Duwamish Trail. Trail may require in-road ROW development due to highly constrained ROW.	Inside UGA	Programmed	1.8	6.3	9.0
21	SC-2	Soos Creek Trail, Phase 5 (192nd - Petrovitsky) <sup>(4)</sup>	Regional Trail	Design/construct paved trail from SE 192nd St to Petrovitsky Road.	Inside UGA	Programmed	1.2	9.0	9.0
22	SNO-2	Snoqualmie Valley Trail, Snoqualmie Mill Gap <sup>(3)</sup>	Regional Trail	Design/construct soft surface trail through historic Snoqualmie Mill Site to fill gap in Snoqualmie Valley Trail. Reinig Road to Tokul Road. May include bridging Reinig Road.	Inside UGA	Programmed	2.2	6.2	9.3
23	FH-1	Foothills Trail, South	Regional Trail	Design/construct paved and soft surface trail between Enumclaw and White River along historic RR corridor parallel to Boise Creek.	Outside UGA, but connects UGAs within King and Pierce Counties (Enumclaw, Buckley)	Programmed	1.1	3.9	5.5

**REGIONAL TRAILS NEEDS REPORT**  
**Projects Listing Summary (July 2015)**

Listing Number	RTNR Identification Number	Project Title	Project Type	Comment/Status	UGA Relationship	Regional Transportation Plan Status <sup>(1)</sup>	Approximate Distance (Miles)	Prelim. Total Cost Est. (Low) (2015 - \$M) <sup>(2)(3)</sup>	Prelim. Total Cost Est. (High) (2015 - \$M) <sup>(2)(3)</sup>
24	FH-2	<b>Foothills Trail</b> , White River Bridge	Regional Trail Bridge	Design/construct regional trail bridge over White River extending from the south terminus of Foothills Trail in King County to Pierce County.	Outside UGA, but connects UGAs within King and Pierce Counties (Enumclaw, Buckley)	Programmed	N/A	6.9	6.9
							<b>24.3</b>	<b>116.6</b>	<b>163.1</b>

**Tier 3 Priority**

25	SR-3	<b>Sammamish River Trail</b> , Redmond Improvement (Widening)	Regional Trail Upgrade	Upgrade (widen and improve) existing paved trail in Redmond from NE 116th Street to Marymoor Park. The project would continue and complete the previous SRT widening program.	Inside UGA	New	1.0	3.5	5.0
26	SC-3a	<b>Soos Creek Trail</b> , Phase 6 - Petrovitsky Crossing. <sup>(4)</sup>	Regional Trail Grade Separated Crossing	Design/construct grade separated crossing of Petrovitsky Road.	Inside UGA	Programmed	N/A	5.1	5.1
27	SC-3b	<b>Soos Creek Trail</b> , Phase 6 - Renton Park Segment	Regional Trail	Design/construct paved regional trail, Renton Park - Petrovitsky to Lindburgh HS.	Inside UGA	Programmed	0.8	2.7	3.8
28	SC-3c	<b>Soos Creek Trail</b> , Phase 6 - Lindburg to CRT	Regional Trail	Design/construct paved regional trail, Lindburgh HS to Cedar River Trail.	Inside UGA	Programmed	2.0	6.8	9.8
29	GR-1	<b>Green River Trail</b> , Phase 2	Regional Trail	Design/construct paved trail south of SE 259th Street in Kent.	Inside UGA	Programmed	0.5	1.8	2.5
30	I-R	<b>Interurban Trail (South)</b> , Redevelopment	Regional Trails Redevelopment	Plan/design/construct redeveloped paved trail to replace existing trail; Green River Trail in Tukwila to 3rd Street in Pacific. May be undertaken in multiple phases.	Inside UGA	Update to Plan	14.8	51.8	74.0
31	SC-4	<b>Soos Creek Trail</b> , Phase 7	Regional Trail	Design/construct paved and soft surface regional trail; southern terminus of existing Soos Creek Trail near SE 266th Street to Covington Way/Kent-Kangley Road.	Inside UGA	Unprogrammed	0.8	2.8	4.0
32	SR18	<b>SR18 Trail</b> (Segments)	Regional Trail	Design/construct paved and soft surface regional trail. Project may be developed in distinct segments.	Inside and Outside UGA	Programmed	25.0	87.5	125.0

**REGIONAL TRAILS NEEDS REPORT**  
**Projects Listing Summary (July 2015)**

Listing Number	RTNR Identification Number	Project Title	Project Type	Comment/Status	UGA Relationship	Regional Transportation Plan Status <sup>(1)</sup>	Approximate Distance (Miles)	Prelim. Total Cost Est. (Low) (2015 - \$M) <sup>(2)(3)</sup>	Prelim. Total Cost Est. (High) (2015 - \$M) <sup>(2)(3)</sup>
33	SNO-1	<b>Snoqualmie Valley Trail</b> , Phase 4 (North Extension) <sup>(3)</sup>	Regional Trail	Design/construct extension of soft surface trail from Duvall to Snohomish County to link with Snohomish Co regional trails.	Outside UGA	Unprogrammed	3.2	9.0	13.6
							<b>48.0</b>	<b>170.9</b>	<b>242.7</b>

**Tier 4 Priority**

34	CS-1	<b>Cedar-Sammamish Trail</b>	Regional Trail	Design and construct a paved trail between the Cedar River Trail and Issaquah. Project would intersect Cedar River Trail at 154th Pl SE near Renton and continue north to existing trail at intersection of 17th Ave NW at Newport Way NW in Issaquah.	Inside and outside UGA	Programmed	5.6	19.6	28.0
35	ELS-1	<b>East Lake Sammamish Trail - North</b>	Regional Trail	Design and construct extension of paved trail from NE 70th St in Redmond to Bear Creek Parkway through the SR-520 interchange and across Bear Creek.	Inside UGA	Programmed	1.0	3.5	5.0
36	PS-1	<b>Preston Snoqualmie Trail Extension</b>	Regional Trail	Design and construct extension of existing trail to Snoqualmie past Snoqualmie Falls on historic RR line along north side of Snoqualmie Ridge using up to three trestles/bridges. Trail will co-locate with operating scenic RR near falls.	Inside and outside UGA	Update to Plan	1.1	3.9	5.5
37	SR-1-S	<b>W Sammamish River Trail (Soft-Surface) South Phase - Leary Way to NE 124th Street</b> <sup>(3)</sup>	Regional Trail	Design and construct a soft surface trail along the west side of the Sammamish R. parallel with existing paved trail.	Inside and outside UGA	Programmed	3.1	8.7	13.1
38	SR-1-N	<b>W Sammamish River Trail (Soft-Surface) North Phase - NE 124th to 102nd Ave NE in Bothell</b> <sup>(3)</sup>	Regional Trail	Design and construct a soft surface trail on west side of Sammamish R. between NE 124th Street at Redmond to 102nd Ave NE. Portion in Bothell uses abandoned RR corridor	Inside and outside UGA	Programmed	5.4	15.1	22.9
39	GR-3	<b>Green River Trail Phase 3</b>	Regional Trail	Design and construct and extension of the paved trail south between Kent and Auburn along the Green River; trail will be located between existing Green River Trail in Kent and S 277th Street in Auburn.	Connects UGAs	Programmed	2.7	9.5	13.5

**REGIONAL TRAILS NEEDS REPORT**  
**Projects Listing Summary (July 2015)**

Listing Number	RTNR Identification Number	Project Title	Project Type	Comment/Status	UGA Relationship	Regional Transportation Plan Status <sup>(1)</sup>	Approximate Distance (Miles)	Prelim. Total Cost Est. (Low) (2015 - \$M) <sup>(2)(3)</sup>	Prelim. Total Cost Est. (High) (2015 - \$M) <sup>(2)(3)</sup>
40	GR-2.2	Green River 2.2 (259th St SE)	Regional Trail	Design and construct a missing link in the trail along S 259th Street in Kent from the Interurban Trail (South) to Green River Trail Phase 2 project site.	Inside UGA	Programmed	0.3	1.1	1.5
41	GR-4	Green River Trail Phase 4	Regional Trail	Design and construct paved trail through central Auburn; may require new bridge across the Green River near Branan Park that would be a separate project (not included in project scope and csot estimate).	Inside UGA	Programmed	4.7	16.5	23.5
42	GR-2	Green River Bridge <sup>(6)</sup>	Regional Trail Bridge	Design and construct a new river bridge between Central Place S and 86th Ave S to extend the trail; project contingent upon using "Horse Neck" route for Green River Phase 3.	Inside UGA	Update to Plan	N/A	2.7	2.7
43	EP-2	East Plateau Trail - Klahanie to Soaring Eagle Park	Regional Trail	Design and construct a paved trail from Klahanie at Issaquah-Beaver Lake Road to Soaring Eagle Park via Duthie Hill Park and Trossachs community.	Inside and outside UGA	Programmed	2.6	7.3	11.0
44	SC-6	Soos Creek Trail to Lake Youngs Trail <sup>(3)</sup>	Regional Trail and On-Road	Project would be a short on-road and off-road link between Soos Creek Trail and Lake Youngs Trail at SE 148th Ave. via SE 216th Street and crossing a powerline corridor. Off-road segment would be soft surface. Trail would require in-road designation and limited improvements through powerline area.	Outside UGA	Unprogrammed	0.7	2.5	3.5
							<b>27.2</b>	<b>90.1</b>	<b>130.3</b>

**Regional Trail - Planned**

45	PS-3	Snoqualmie Regional Connector	Regional Trail	Design and construct a paved and soft surface regional trail link between Preston-Snoqualmie and Snoqualmie Valley trails by constructing trail between trail at Tokul Tunnel and SR-202/SE Stearns Road.	Inside UGA	Unprogrammed	0.8	2.6	3.8
----	------	-------------------------------	----------------	---	------------	--------------	-----	-----	-----

**REGIONAL TRAILS NEEDS REPORT**  
**Projects Listing Summary (July 2015)**

Listing Number	RTNR Identification Number	Project Title	Project Type	Comment/Status	UGA Relationship	Regional Transportation Plan Status <sup>(1)</sup>	Approximate Distance (Miles)	Prelim. Total Cost Est. (Low) (2015 - \$M) <sup>(2)(3)</sup>	Prelim. Total Cost Est. (High) (2015 - \$M) <sup>(2)(3)</sup>
46	I-1-P	<b>Interurban Trail Extension - Pacific (Partnership)</b>	Regional Trail	Design and construct connection to Pierce Co through City of Pacific (Partnership). Paved trail would link south end of existing Interurban Trail with City of Sumner.	Inside UGA	Unprogrammed	1.4	4.7	6.8
47	EP-1	<b>Laughing Jacobs Creek Trail Segment</b>	Regional Trail	Design and construct missing link in trail system along Laughing Jacobs Creek near SE 43rd Way through Providence Point area. Paved trail would link ELST with East Plateau Trails and Klahanie.	Inside UGA	Unprogrammed	0.5	1.8	2.5
48	FH-4	<b>Foorhills Trail (Enumclaw Plateau) Trail - Central</b>	Regional Trail	Design and construct north segment of trail from Enumclaw to Nolte State Park along abandoned railroad corridor. Trail would be paved and soft surface and use a historic RR corridor.	Outside UGA	Unprogrammed	4.7	16.5	23.5
49	FH-5	<b>Foothills (Enumclaw Plateau) Trail - North</b>	Regional Trail	Design and construct north segment of trail from Nolte State Park to Kanaskat near Kanaskat-Palmer State Park. Trail would be paved and soft surface and use a historic RR corridor and bridge to cross the Green River.	Outside UGA	Unprogrammed	4.3	15.1	21.5
50	LK-1	<b>Landsburg-Kanaskat Trail</b>	Regional Trail	Design and construct extension of the Cedar River Trail corridor east from Landsburg to Kanaskat as a paved and soft surface trail.	Outside UGA	Unprogrammed	8.3	29.1	41.5
51	PP-1	<b>Puget Power Trail - East Segment</b>	Regional Trail	Design and construct extension of existing Puget Power Trail as a paved and soft surface trail to Redmond Ridge (Redmond-to-Redmond segment). Project would extend roughly from McWhirter Park to Novelty Hill Road along powerline.	Connects UGAs	Unprogrammed	2.0	7.0	10.0
52	TP-3.2	<b>Tolt Pipeline Trail and Bridge - Snoqualmie River</b>	Regional Trail and Bridge	Design and construct a bike/ped crossing of the Snoqualmie River and trail segment across the floodplain from W Snoqualmie Valley Rd to the Snoqualmie Valley Trail on the east side of the valley. Paved and /or soft-surface trail would follow pipeline alignment across river valley.	Outside UGA	Unprogrammed	N/A	3.9	3.9

**REGIONAL TRAILS NEEDS REPORT**  
**Projects Listing Summary (July 2015)**

Listing Number	RTNR Identification Number	Project Title	Project Type	Comment/Status	UGA Relationship	Regional Transportation Plan Status <sup>(1)</sup>	Approximate Distance (Miles)	Prelim. Total Cost Est. (Low) (2015 - \$M) <sup>(2)(3)</sup>	Prelim. Total Cost Est. (High) (2015 - \$M) <sup>(2)(3)</sup>
53	TR-1	<b>Tolt River Trail</b>	Regional Trail	Design and construct extension of trail along the Tolt River northeast of Carnation to Moss Lake. Paved and soft-surface.	Outside UGA	Unprogrammed	6.5	22.8	32.5
54	I-1-E	<b>Interurban Trail Extension - Edgewood (Partnership)</b>	Regional Trail	Design and construct a paved trail to Pierce Co through City of Edgewood along historic Interurban route toward Milton. Project would start at Interurban Trail at 3rd Ave SW and cross under SR167 in-road then southwest along abandoned rail line to Milton.	Inside UGA	Unprogrammed	2.4	8.4	12.0
55	TP-3.1	<b>Tolt Pipeline Trail - West Valley Connector</b>	Regional Trail and Possible Drive Connection	Design and construct paved and soft surface trail between the Tolt Pipeline Trail and W Snoqualmie Valley Rd. Steep terrain.	Outside UGA	Not in Plan	0.9	2.5	3.8
56	LYCR-1	<b>Lake Youngs to Cedar River Trail (Soft-Surface) <sup>(3)</sup></b>	Regional Trail	Design and construct a soft surface trail from the east side of Lake Youngs Trail to Cedar River or Green-to-Cedar Rivers trails along a SPU water pipeline corridor roughly following Petrovitsky Rd.	Outside UGA	Programmed	4.1	11.5	17.4
57	GR-5	<b>Green River Trail Phase 5 (Upper)</b>	Regional Trail	Project would extend trail east within Green River Valley south of Auburn to Flaming Geyser State Park. Trail would intersect with future Soos Creek Trail (Phase 8) and Green-to-Cedar Rivers Trail. Paved and soft-surface.	Outside UGA	Programmed	8.1	28.4	40.5
58	PS-2	<b>Snoqualmie River Bridge</b>	Regional Trail Bridge or Col-Location with Road Bridge	Project would construct a new trail bridge over Snoqualmie River east of Snoqualmie Falls near SR 202 Bridge at junction of PST and Snoqualmie Regional Connector. Bridge would likely be located at east end of Preston-Snoqualmie Trail adjacent to existing highway bridge. Co-location with road bridge may be explored.	Inside UGA	Programmed	N/A	1.6	1.6
							<b>43.9</b>	<b>155.7</b>	<b>221.2</b>

**REGIONAL TRAILS NEEDS REPORT**  
**Projects Listing Summary (July 2015)**

Listing Number	RTNR Identification Number	Project Title	Project Type	Comment/Status	UGA Relationship	Regional Transportation Plan Status <sup>(1)</sup>	Approximate Distance (Miles)	Prelim. Total Cost Est. (Low) (2015 - \$M) <sup>(2)(3)</sup>	Prelim. Total Cost Est. (High) (2015 - \$M) <sup>(2)(3)</sup>
<b>Regional Trail - Long-Range Planned</b>									
59	CR-1	<b>Cedar River Trail Retrofit: Paved and Equestrian Trail</b>	Regional Trail Redevelopment	Project would extend paved and soft surface trail along existing trail alignment from existing paved trail in Maple Valley to Landsburg Trailhead Park at Landsburg Rd SE. Equestrian component would be integral component.	Part inside UGA	Update to Plan	5.0	17.5	25.0
60	SC-5	<b>Soos Creek Trail Phase 8 (SR18-GRT) <sup>(4)</sup></b>	Regional Trail or On-Road Facility	Project would extend trail as in-road facility (e.g., cycletrack or other in-road) and/or off-road trail from 156th Pl SE at Kent-Kangley Rd to Green Valley Trail near SE Green Valley Rd. Preferred alignment utilizes Soos Creek Valley. Interim alignment uses alternative in-road and off-road segments. Paved	Outside UGA	Programmed	4.6	16.1	23.0
61	TP-2	<b>Tolt Pipeline Trail - Trail Paving</b>	Regional Trail Redevelopment	Project would pave the existing Tolt Pipeline Trail alignment creating a paved and soft surface trail. Would be completed with approval from SPU. Project would likely be completed in phases from west to east starting at Norway Hill or in segments with greatest use potential.	Part in UGA, connects UGAs	Update to Plan	10.4	36.4	52.0
62	SNO-3	<b>Snoqualmie Valley Trail Paving - SnoCo boundary to Rattlesnake Lake</b>	Regional Trail Redevelopment	Project would create a paved and soft surface trail over the length of the existing Snoqualmie Valley Trail from Snohomish County line north of Duvall to Rattlesnake Lake southeast of North Bend to create a fully multi-use facility. Project may be completed in phases.	Part in UGA	Update to Plan	34.2	119.7	171.0
63	CR-2	<b>Cedar River Trail - Landsburg to Cedar Falls <sup>(7)</sup></b>	Regional Trail	Potential project would develop a new paved and soft surface trail between Cedar River Trail at Landsburg and Snoqualmie Valley Trail at Rattlesnake Lake. Project would enter SPU's Cedar River Watershed. As a result, a change in current land use would be necessary before project could be undertaken.	Outside UGA	Unprogrammed	12.0	42.0	60.0
							<b>66.2</b>	<b>231.7</b>	<b>331.0</b>

**REGIONAL TRAILS NEEDS REPORT**  
**Projects Listing Summary (July 2015)**

Listing Number	RTNR Identification Number	Project Title	Project Type	Comment/Status	UGA Relationship	Regional Transportation Plan Status <sup>(1)</sup>	Approximate Distance (Miles)	Prelim. Total Cost Est. (Low) (2015 - \$M) <sup>(2)(3)</sup>	Prelim. Total Cost Est. (High) (2015 - \$M) <sup>(2)(3)</sup>
							Approx Distance	Low Estimate	High Estimate
						RTS Legacy Projects	25.6	89.4	127.8
						High Priority Non-Legacy Projects	24.3	116.6	163.1
						Tier 3	48.0	170.9	242.7
						Tier 4	27.2	90.1	130.3
						Planned	43.9	155.7	221.2
						Long-Range Planned	66.2	231.7	331.0
						Total All Projects (Miles)(\$M)	235.2	854.4	1,216.1

**Table Notes**

1. Project current status in Transportation 2040 (PSRC).
2. Preliminary total project cost estimates at \$3.5M to \$5M per unit mile paved trail completed. May not include costs of at-grade intersection improvements (e.g., signalization) or grade-separated facilities (e.g., bridges or tunnels). Cost estimates include construction plus design, permitting, mitigation, administration, and other soft costs. Estimates are subject to revision based on additional information.
3. Preliminary total project cost estimates range at \$2.8M to \$4.24M per unit mile soft-surface (gravel aggregate) completed. May not include costs of at-grade intersection improvements (e.g., signalization) or grade-separated facilities (e.g., bridges or tunnels). Cost estimates include construction plus design, permitting, mitigation, administration, and other soft costs. Estimates are subject to revision based on additional information.
4. Estimate based on most current project scoping.
5. Mobility Connections estimated at \$1.0M - \$2.0M per project.
6. Estimate based on continuation of existing project.
7. The connection would utilize an alignment through Seattle's Cedar River Watershed and is not feasible at this time due to water resource security issues. A change in use by the City of Seattle would necessarily predate the development of such a regional trail facility.
8. Project prioritization is based on Parks' understanding of each project's connectivity, aesthetics/scenic value, timing or relationship to other projects, geographical equity, public support, and expectations for urban center connections/equity and social justice.

**C. For More Information**

Contact the Department of Parks and Natural Resources at 206-296-0100.